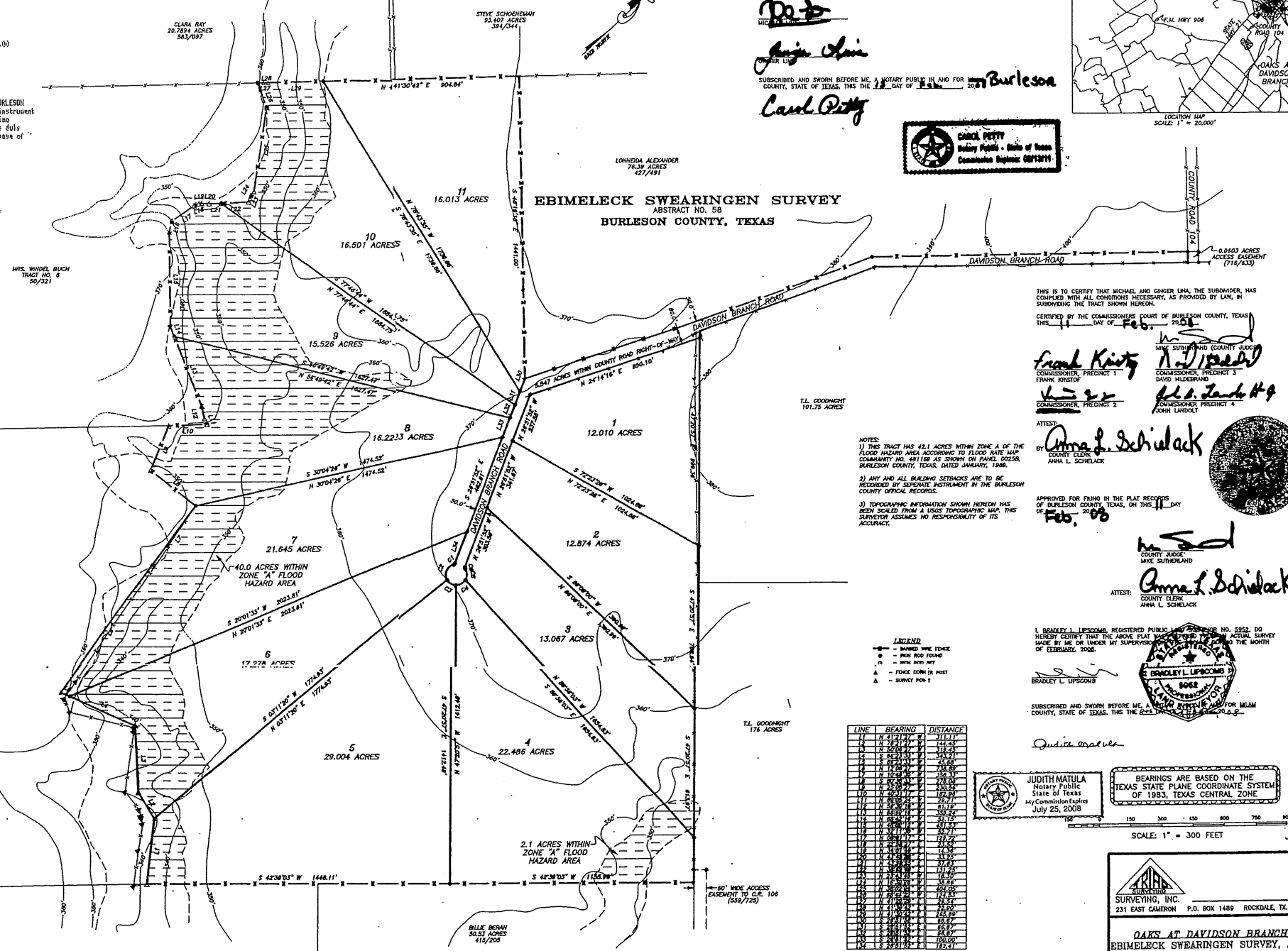


Filed for Record in:  
Burleson County  
On Feb 13, 2008 at 02:10:42  
As an Plat  
Amount 71.00  
Receipt Number - 35069  
By  
Sharon Burress

STATE OF TEXAS COUNTY OF BURLESON  
I hereby certify that this instrument was filed on the date and time stamped herein by me and was duly recorded in the volume and page of the named records of Burleson County as stamped herein by me.  
Feb 13, 2008

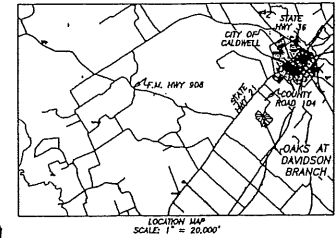
Honorably Anna L. Schielack  
County Clerk



WE MICHAEL AND GINGER LIMA ARE THE OWNERS OF THE TRACT OF LAND SHOWN HEREON AND DO ACCEPT THIS AS THE PLAN FOR SUBDIVIDING THE TRACT INTO LOTS AND BLOCKS AND DO DEED TO THE PUBLIC FOREVER, THE STREETS, ALLEYS AND EASEMENTS SHOWN HEREON.

Michael Lima  
Ginger Lima  
Subscribed and sworn before me, a Notary Public in and for Burleson County, State of Texas, this 11 DAY of Feb. 2008

Carol Pettit  
Notary Public - State of Texas  
Commission Expires 08/13/11



### EBBIMELECK SWEARINGEN SURVEY ABSTRACT NO. 58 BURLESON COUNTY, TEXAS



THIS IS TO CERTIFY THAT MICHAEL AND GINGER LIMA, THE SUBDIVIDER, HAS COMPLIED WITH ALL CONDITIONS NECESSARY, AS PROVIDED BY LAW, IN SUBDIVIDING THE TRACT SHOWN HEREON.

CERTIFIED BY THE COMMISSIONERS COURT OF BURLESON COUNTY, TEXAS THIS 11 DAY OF Feb. 2008

Frank Krutok  
Commissioner, Precinct 1  
J. S. ...  
Commissioner, Precinct 2

David Hildnerman  
Commissioner, Precinct 3  
John Landolt  
Commissioner, Precinct 4

Attest:  
Anna L. Schielack  
County Clerk



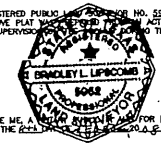
NOTES:  
1) THIS TRACT HAS 42.1 ACRES WITHIN ZONE A OF THE FLOOD HAZARD AREA ACCORDING TO FLOOD HAZARD MAP COMMUNITY NO. 48118 AS SHOWN ON PANEL D0225A, BURLESON COUNTY, TEXAS, DATED JANUARY, 1998.  
2) ANY AND ALL BUILDING SETBACKS ARE TO BE RECORDED BY SEPARATE INSTRUMENT IN THE BURLESON COUNTY OFFICIAL RECORDS.  
3) TOPOGRAPHIC INFORMATION SHOWN HEREON HAS BEEN SCALED FROM A LEGAL TOPOGRAPHIC MAP. THIS SURVEYOR ASSUMES NO RESPONSIBILITY OF ITS ACCURACY.

APPROVED FOR FILING IN THE PLAT RECORDS OF BURLESON COUNTY, TEXAS, ON THIS 11 DAY OF Feb. 08

Attest:  
Anna L. Schielack  
County Clerk

I, BRADLEY L. LIPSCOMB, REGISTERED PUBLIC SURVEYOR NO. 8952, DO HEREBY CERTIFY THAT THE ABOVE PLAT IS THE ACTUAL SURVEY MADE BY ME OR UNDER MY SUPERVISION AND THE MONTH OF FEBRUARY, 2008.

Bradley L. Lipscomb  
Surveyor



Subscribed and sworn before me, a Notary Public in and for Burleson County, State of Texas, this 11 DAY OF Feb. 2008

Judith Matula



BEARINGS ARE BASED ON THE TEXAS STATE PLANE COORDINATE SYSTEM OF 1983, TEXAS CENTRAL ZONE

SCALE: 1" = 300 FEET

LINE	BEARING	DISTANCE
1	N 89°00'00" W	311.24
2	N 89°00'00" W	112.24
3	N 89°00'00" W	112.24
4	N 89°00'00" W	72.80
5	N 89°00'00" W	37.20
6	N 89°00'00" W	37.20
7	N 89°00'00" W	37.20
8	N 89°00'00" W	37.20
9	N 89°00'00" W	37.20
10	N 89°00'00" W	37.20
11	N 89°00'00" W	37.20
12	N 89°00'00" W	37.20
13	N 89°00'00" W	37.20
14	N 89°00'00" W	37.20
15	N 89°00'00" W	37.20
16	N 89°00'00" W	37.20
17	N 89°00'00" W	37.20
18	N 89°00'00" W	37.20
19	N 89°00'00" W	37.20
20	N 89°00'00" W	37.20
21	N 89°00'00" W	37.20
22	N 89°00'00" W	37.20
23	N 89°00'00" W	37.20
24	N 89°00'00" W	37.20
25	N 89°00'00" W	37.20
26	N 89°00'00" W	37.20
27	N 89°00'00" W	37.20
28	N 89°00'00" W	37.20
29	N 89°00'00" W	37.20
30	N 89°00'00" W	37.20
31	N 89°00'00" W	37.20
32	N 89°00'00" W	37.20
33	N 89°00'00" W	37.20
34	N 89°00'00" W	37.20
35	N 89°00'00" W	37.20
36	N 89°00'00" W	37.20
37	N 89°00'00" W	37.20
38	N 89°00'00" W	37.20
39	N 89°00'00" W	37.20
40	N 89°00'00" W	37.20
41	N 89°00'00" W	37.20
42	N 89°00'00" W	37.20
43	N 89°00'00" W	37.20
44	N 89°00'00" W	37.20
45	N 89°00'00" W	37.20
46	N 89°00'00" W	37.20
47	N 89°00'00" W	37.20
48	N 89°00'00" W	37.20
49	N 89°00'00" W	37.20
50	N 89°00'00" W	37.20

CURVE	RADIUS	DELTA	ARC	TANGENT	BEARING	CHORD
C1	100.00	180.00	31.42	31.42	N 89°00'00" W	62.84
C2	100.00	180.00	31.42	31.42	N 89°00'00" W	62.84
C3	100.00	180.00	31.42	31.42	N 89°00'00" W	62.84
C4	100.00	180.00	31.42	31.42	N 89°00'00" W	62.84
C5	100.00	180.00	31.42	31.42	N 89°00'00" W	62.84

LEWIS & CLARK SURVEYING, INC.  
231 EAST CAMERON P.O. BOX 1489 ROCKDALE, TX. 78667

OAKS AT DAVIDSON BRANCH  
EBBIMELECK SWEARINGEN SURVEY, A-58  
BURLESON COUNTY, TEXAS

Completion Date: 2/7/08  
Scale: 1"=300'  
PROJECT NO. 50817

Drawn by: BL  
Surveyed by: JB/JS  
Checked by: LEM

PLOT DATE: