

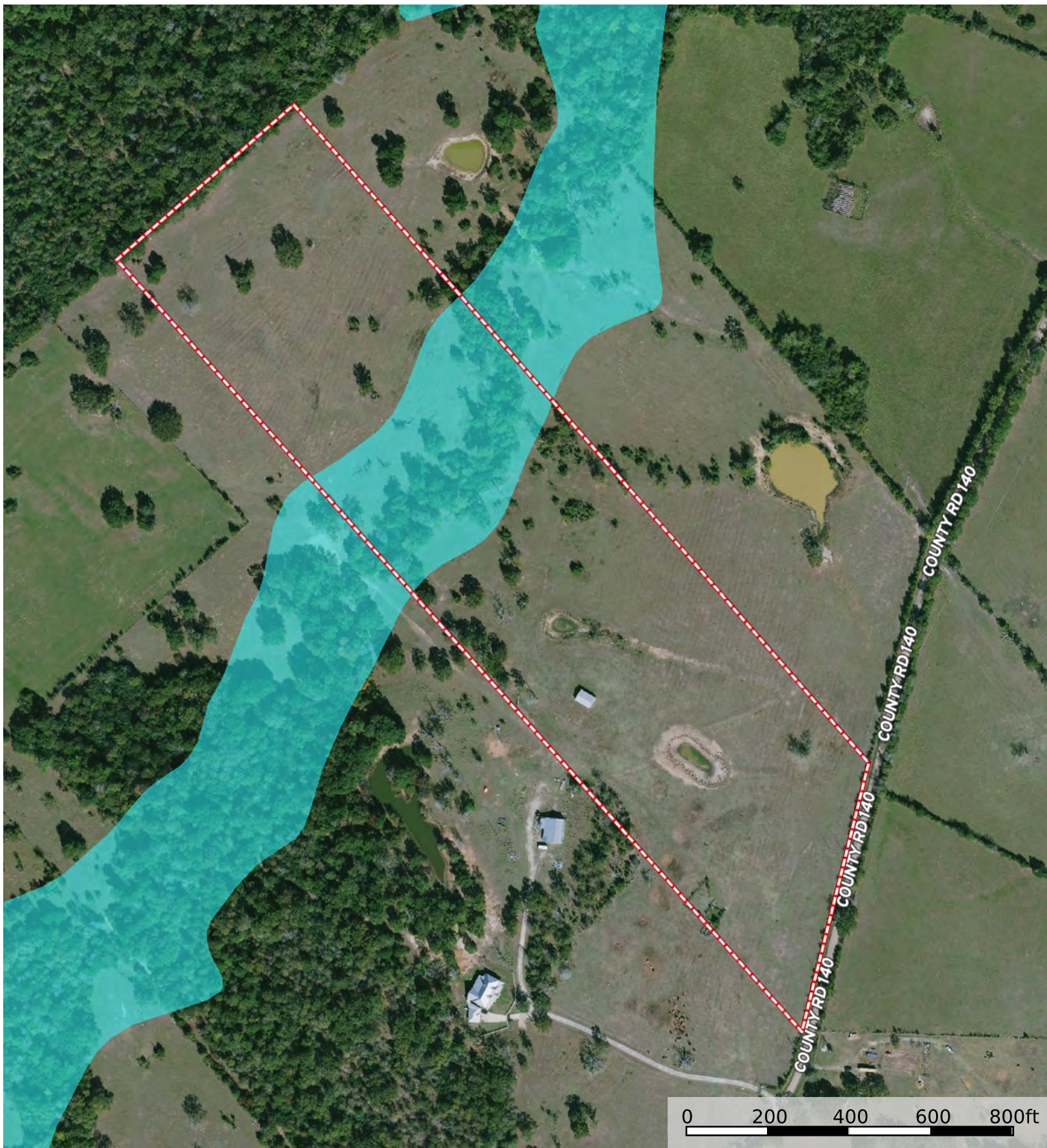
Boundary

30.5+/- Acres County Rd 140  
Grimes County, Texas, 30.5 AC +/-



Boundary

30.5+/- Acres County Rd 140  
Grimes County, Texas, 30.5 AC +/-





Boundary

|  Boundary 30.53 ac

SOIL CODE	SOIL DESCRIPTION	ACRES	%	CPI	NCCPI	CAP
AxC	Axtell fine sandy loam, 1 to 5 percent slopes	11.11	36.39	0	55	4e
AxC2	Axtell fine sandy loam, 2 to 5 percent slopes, moderately eroded	6.5	21.29	0	51	4e
RaB	Rader fine sandy loam, 1 to 3 percent slopes	4.54	14.87	0	58	3s
Na	Nahatche clay loam, frequently flooded	4.04	13.23	0	40	5w
ChC	Chazos loamy fine sand, 1 to 5 percent slopes	3.77	12.35	0	55	3e
TaC	Tabor fine sandy loam, 1 to 5 percent slopes	0.57	1.87	0	39	4e
TOTALS		30.53(*)	100%	-	52.31	3.86

(\*) Total acres may differ in the second decimal compared to the sum of each acreage soil. This is due to a round error because we only show the acres of each soil with two decimal.

