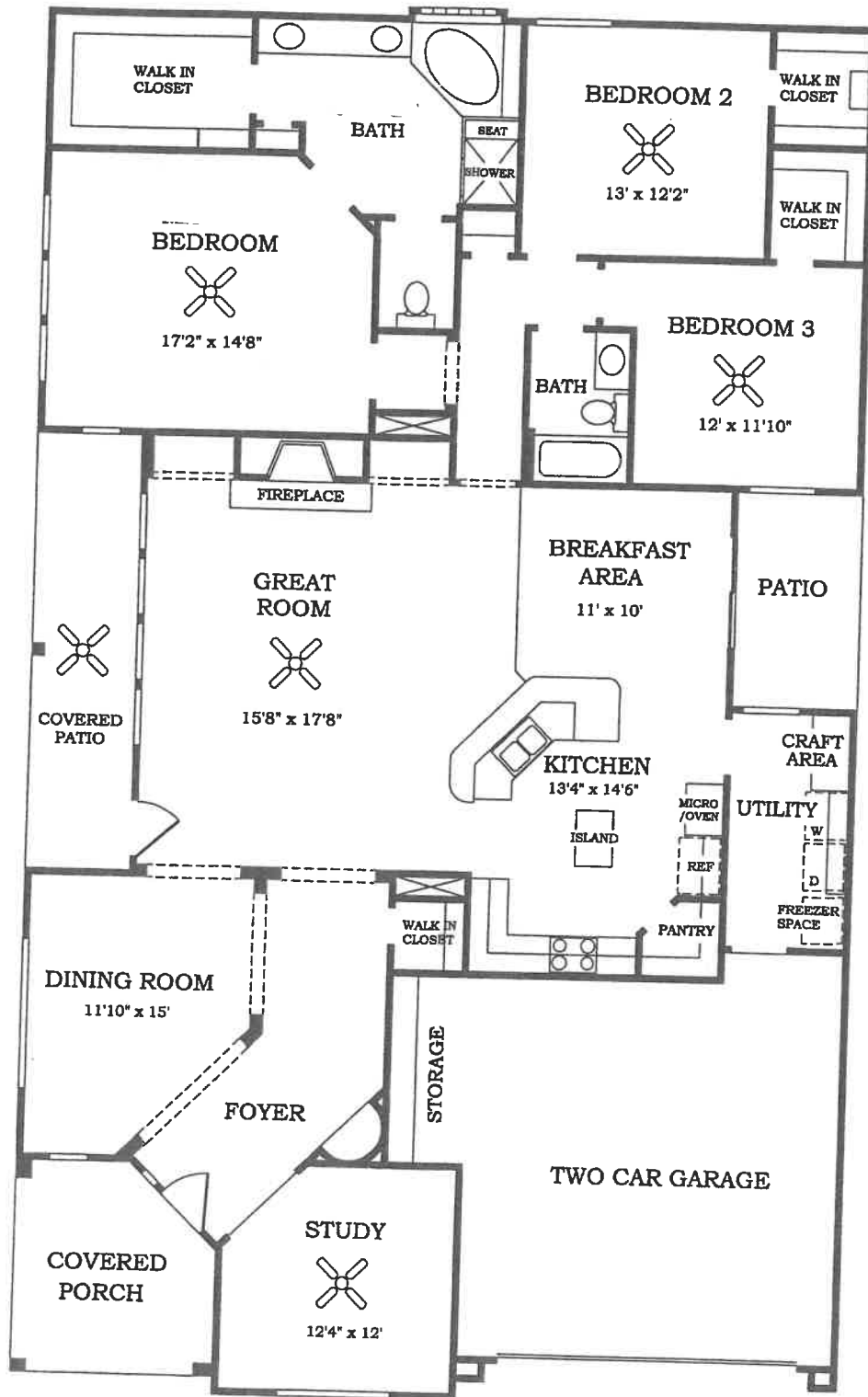


# The Victoria

MODEL #7160

THREE BEDROOMS + STUDY, TWO FULL BATHS, COVERED PATIO, ISLAND KITCHEN, GREAT ROOM WITH FIREPLACE, UTILITY ROOM WITH CRAFT AREA. TWO-CAR ATTACHED GARAGE WITH BUILT-IN STORAGE AREA.  
APPROXIMATELY 2507 SQ. FT.



**Lennar**  
Homes, since 1954



In our continuing efforts to improve our product, Lennar Homes reserves the right to revise specifications and dimensions without notice. All dimensions are approximate. Layout may be revised. Landscaping shown is for conceptual purposes only. Copyright © 1995 Lennar Homes, Inc. All rights reserved 3/96

