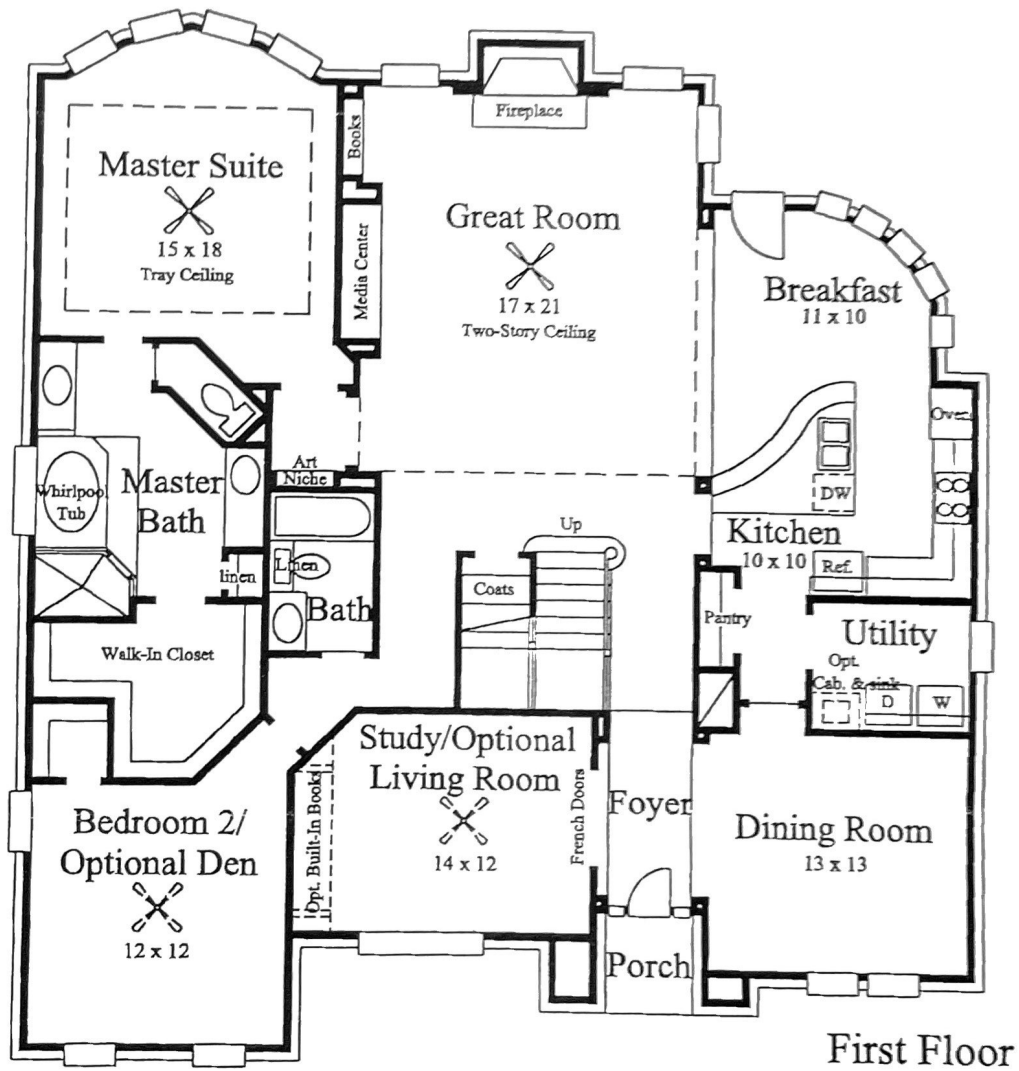
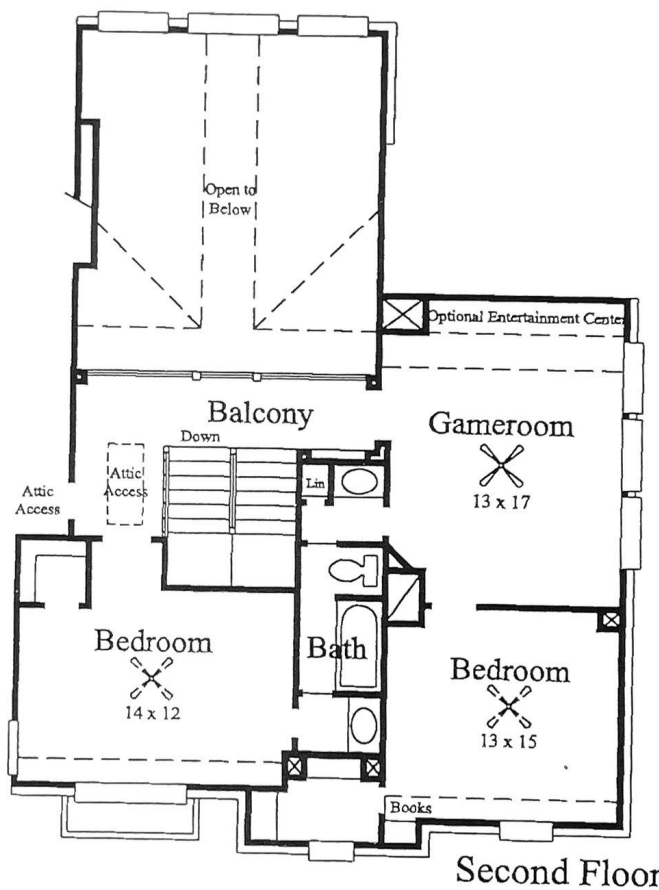
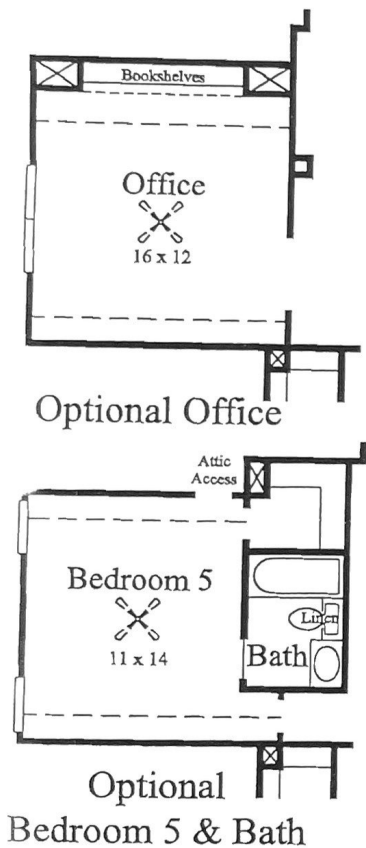


PALERMO

PLAN 388 - 3295 SQ. FT.





- Two bedrooms up and two bedrooms down make this home ideal for families with a small infant, live in nanny, maid or relative. An optional fifth bedroom with bath is also available upstairs for growing families.
- The second downstairs bedroom offers great flexibility, as it can be separated from the master or accessed from the same hall. One option uses the room as a den allowing the master closet to increase in size and the second full bath to down-size to a powder room.
- The dramatic Great Room includes a sloped ceiling, back-vent fireplace with decorative windows, plus a built-in media center and bookcases.
- The large, open kitchen features a piano-shaped island, spacious pantry and dramatic curved morning room.
- The master suite is highlighted by a coffered ceiling, bowed-bay sitting area and a generous bath with an oversized (and expandable) walk-in closet and split his-and-her vanities.
- Upstairs, both bedrooms feature walk-in closets. The spacious game room is isolated from downstairs for minimal noise disruptions, an optional home office is also available upstairs.