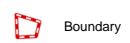
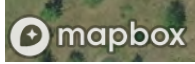
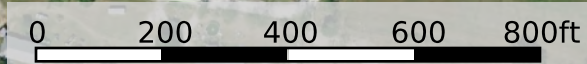


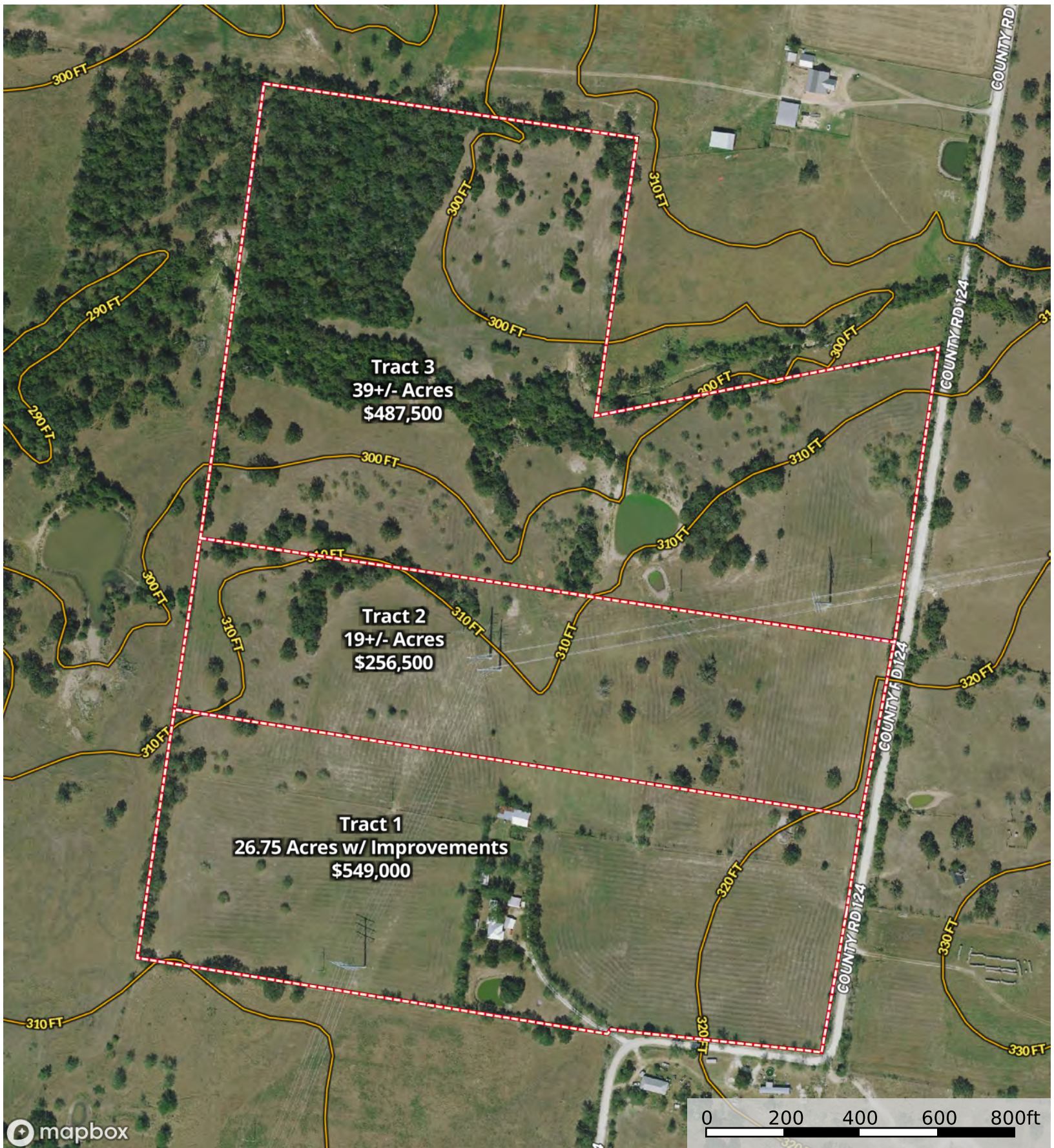
Tract 3
39+/- Acres
\$487,500

Tract 2
19+/- Acres
\$256,500

Tract 1
26.75 Acres w/ Improvements
\$549,000

COUNTY RD 124
COUNTY RD 124
COUNTY RD 124
COUNTY RD 124

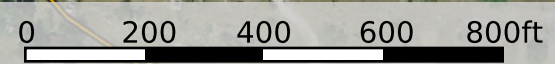




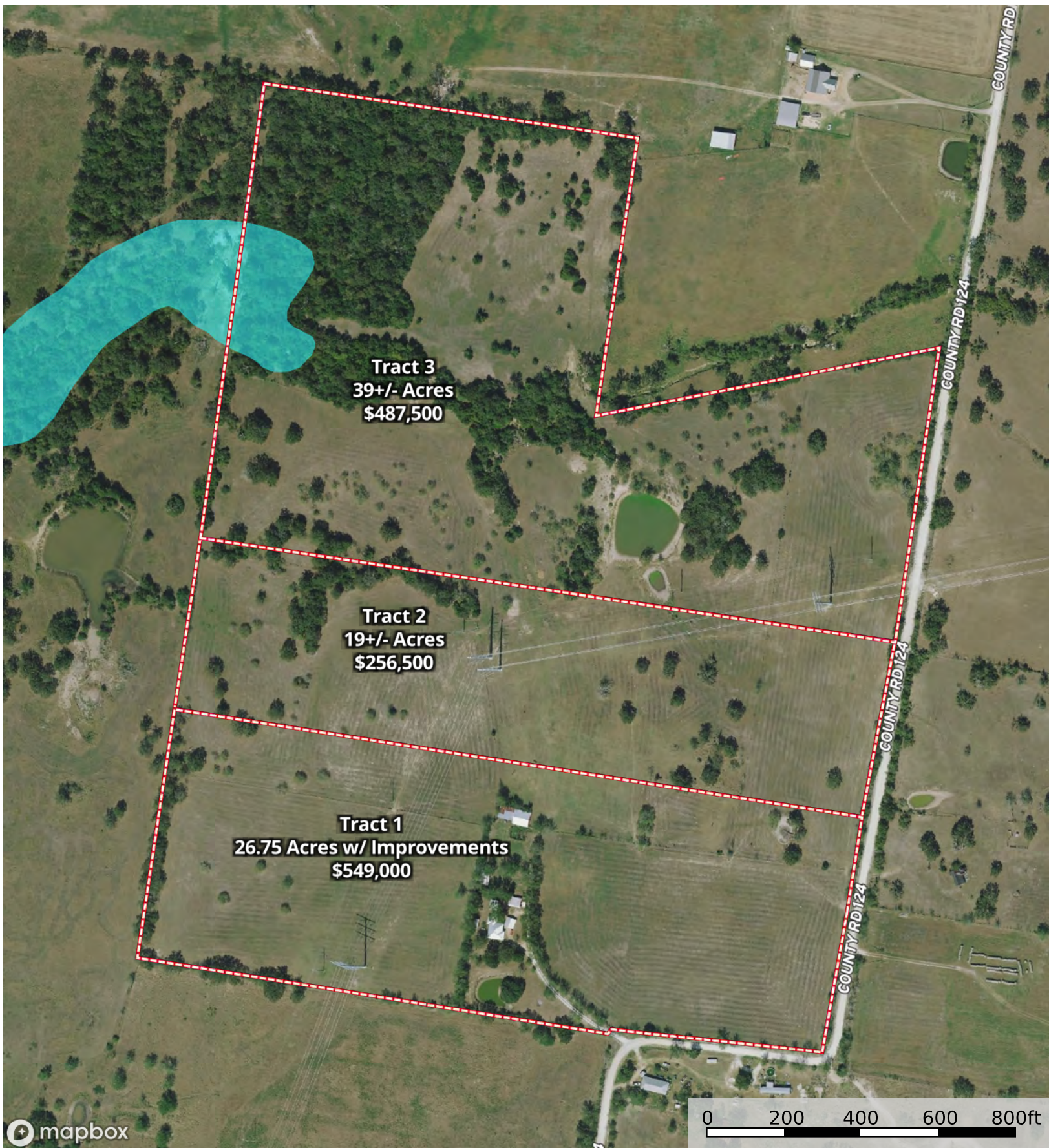
Tract 3
39+/- Acres
\$487,500

Tract 2
19+/- Acres
\$256,500

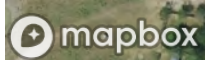
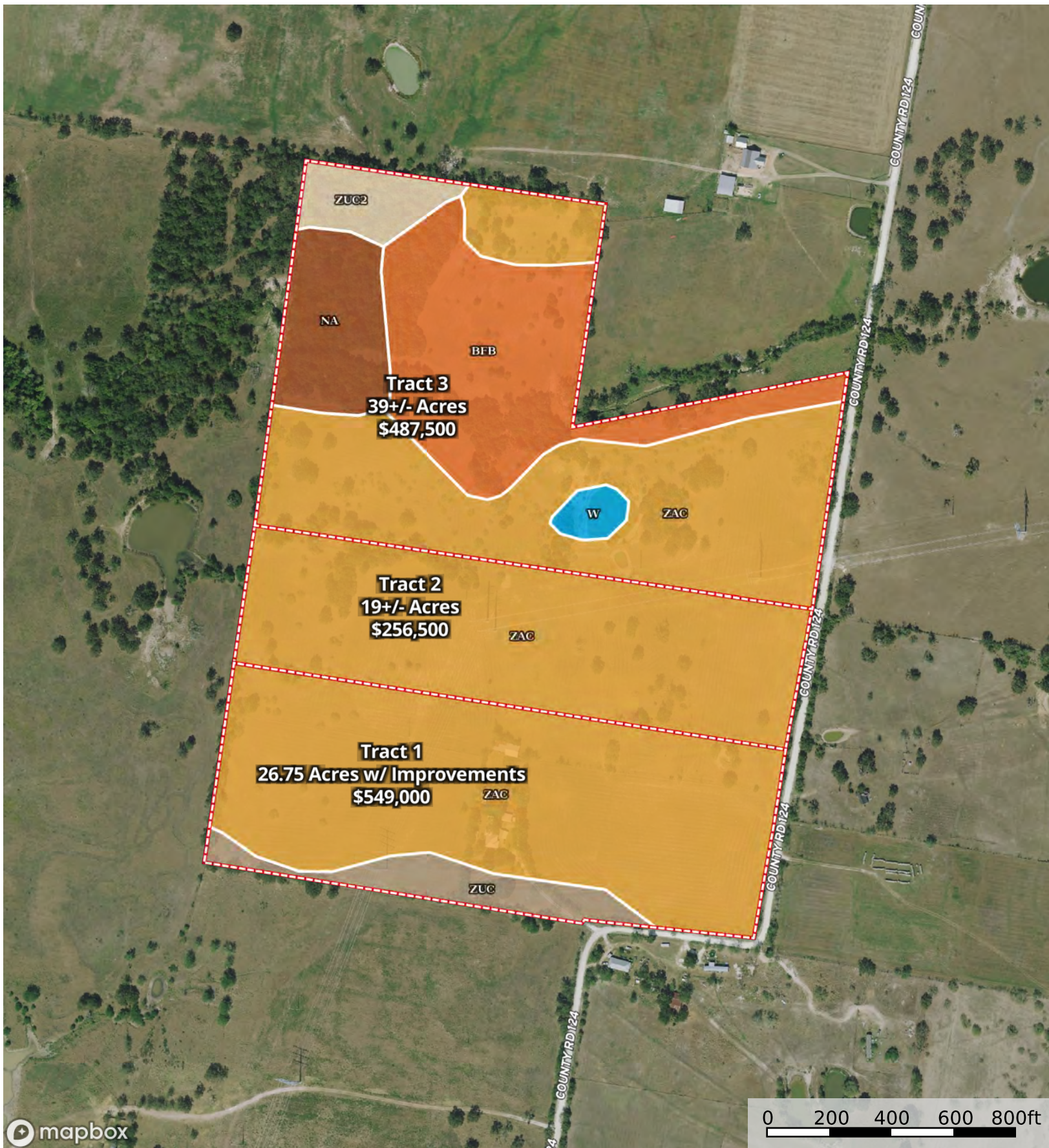
Tract 1
26.75 Acres w/ Improvements
\$549,000



Boundary



- Boundary
- 100 Year Floodplain
- 500 Year Floodplain
- Floodway
- Special
- Unmapped/ Not Included



Boundary

|  All Polygons 84.68 ac

SOIL CODE	SOIL DESCRIPTION	ACRES	%	CPI	NCCPI	CAP
ZaC	Zack fine sandy loam, 1 to 5 percent slopes	62.19	73.46	0	35	4e
BfB	Boonville fine sandy loam, 1 to 3 percent slopes	12.21	14.42	0	41	3e
Na	Nahatche clay loam, frequently flooded	4.4	5.2	0	40	5w
ZuC	Zulch fine sandy loam, 1 to 5 percent slopes	3.01	3.56	0	48	3e
ZuC2	Zulch fine sandy loam, 1 to 5 percent slopes, eroded	2.13	2.52	0	46	4e
W	Water	0.74	0.87	0	-	-
TOTALS		84.68(*)	100%	-	36.57	3.87

(*) Total acres may differ in the second decimal compared to the sum of each acreage soil. This is due to a round error because we only show the acres of each soil with two decimal.

|  Boundary 38.86 ac

SOIL CODE	SOIL DESCRIPTION	ACRES	%	CPI	NCCPI	CAP
ZaC	Zack fine sandy loam, 1 to 5 percent slopes	19.38	49.9	0	35	4e
BfB	Boonville fine sandy loam, 1 to 3 percent slopes	12.21	31.44	0	41	3e
Na	Nahatche clay loam, frequently flooded	4.4	11.33	0	40	5w
ZuC2	Zulch fine sandy loam, 1 to 5 percent slopes, eroded	2.13	5.48	0	46	4e
W	Water	0.74	1.91	0	-	-
TOTALS		38.86(*)	100%	-	37.41	3.8

(*) Total acres may differ in the second decimal compared to the sum of each acreage soil. This is due to a round error because we only show the acres of each soil with two decimal.

|  Boundary 19.0 ac

SOIL CODE	SOIL DESCRIPTION	ACRES	%	CPI	NCCPI	CAP
ZaC	Zack fine sandy loam, 1 to 5 percent slopes	19.0	100.0	0	35	4e
TOTALS		19.0(*)	100%	-	35.0	4.0

(*) Total acres may differ in the second decimal compared to the sum of each acreage soil. This is due to a round error because we only show the acres of each soil with two decimal.

|  Boundary 26.82 ac

SOIL CODE	SOIL DESCRIPTION	ACRES	%	CPI	NCCPI	CAP
ZaC	Zack fine sandy loam, 1 to 5 percent slopes	23.81	88.78	0	35	4e
ZuC	Zulch fine sandy loam, 1 to 5 percent slopes	3.01	11.22	0	48	3e
TOTALS		26.82(*)	100%	-	36.46	3.89









(*) Total acres may differ in the second decimal compared to the sum of each acreage soil. This is due to a round error because we only show the acres of each soil with two decimal.

Capability Legend

Increased Limitations and Hazards

Decreased Adaptability and Freedom of Choice Users

Land, Capability

								
	1	2	3	4	5	6	7	8
'Wild Life'	•	•	•	•	•	•	•	•
Forestry	•	•	•	•	•	•	•	
Limited	•	•	•	•	•	•	•	
Moderate	•	•	•	•	•	•		
Intense	•	•	•	•	•			
Limited	•	•	•	•				
Moderate	•	•	•					
Intense	•	•						
Very Intense	•							

Grazing Cultivation

(c) climatic limitations (e) susceptibility to erosion

(s) soil limitations within the rooting zone (w) excess of water