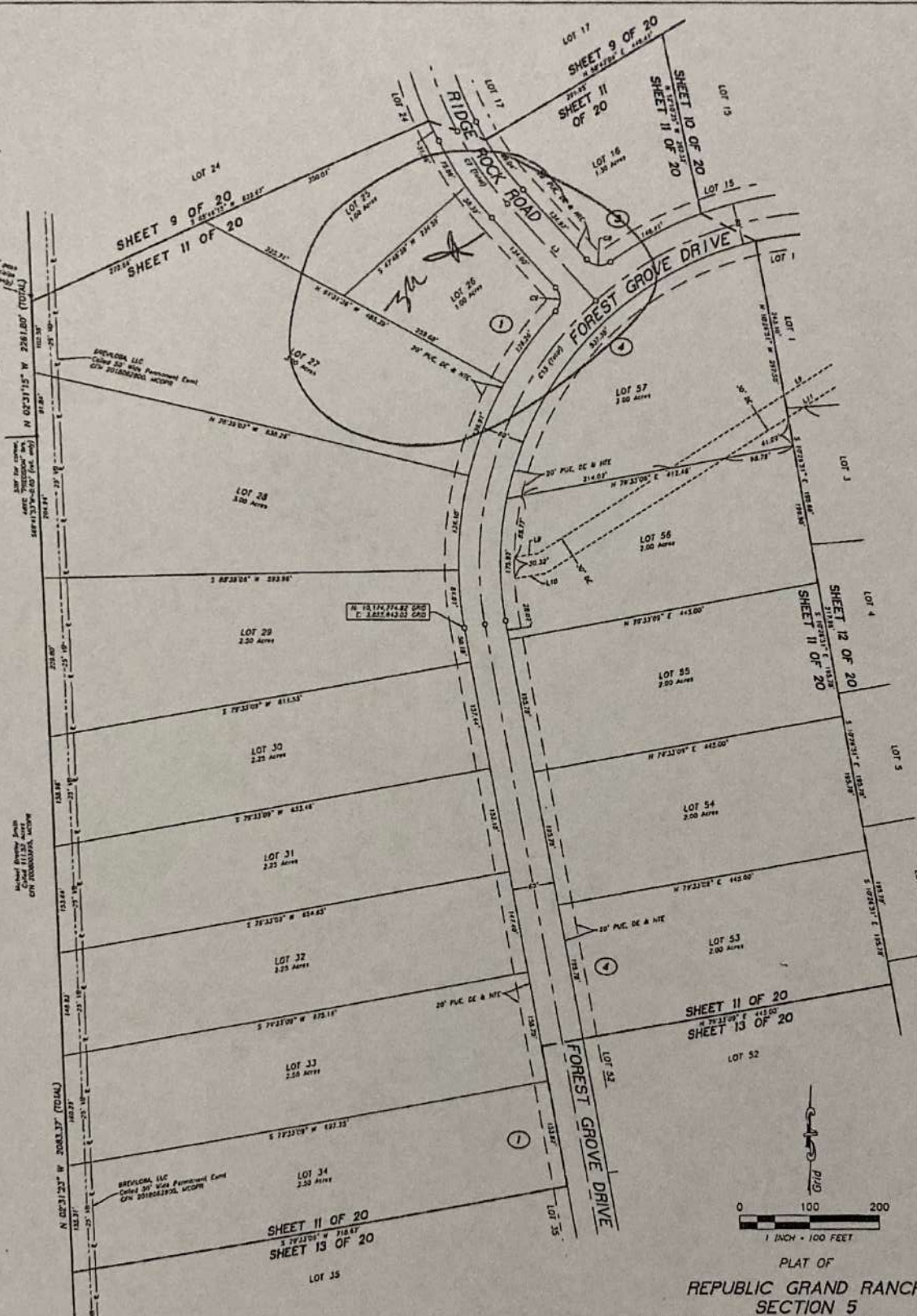


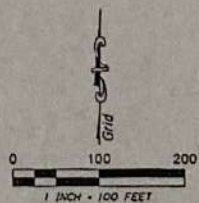
OWNER / DEVELOPER
 REPUBLIC GRAND RANCH, LLC
 7725A E.K. 105
 Suite 200, Houston, TX 77258
 281-752-1841
 Greg P. Sanner
 Authorized Agent

WHITE OAK HILLS, SECTION TWO
 CAB. O. SH. 84, MCPR



- LEGEND**
- ① Block Number
 - ② 20' PUC, DE & NTE
 - ③ 10' PUC
 - ④ 5' PUC
 - ⑤ 10' PUC, DE & NTE
 - ⑥ 10' PUC, DE & NTE
 - ⑦ 10' PUC, DE & NTE
 - ⑧ 10' PUC, DE & NTE
 - ⑨ 10' PUC, DE & NTE
 - ⑩ 10' PUC, DE & NTE
 - ⑪ 10' PUC, DE & NTE
 - ⑫ 10' PUC, DE & NTE
 - ⑬ 10' PUC, DE & NTE
 - ⑭ 10' PUC, DE & NTE
 - ⑮ 10' PUC, DE & NTE
 - ⑯ 10' PUC, DE & NTE
 - ⑰ 10' PUC, DE & NTE
 - ⑱ 10' PUC, DE & NTE
 - ⑲ 10' PUC, DE & NTE
 - ⑳ 10' PUC, DE & NTE
 - ㉑ 10' PUC, DE & NTE
 - ㉒ 10' PUC, DE & NTE
 - ㉓ 10' PUC, DE & NTE
 - ㉔ 10' PUC, DE & NTE
 - ㉕ 10' PUC, DE & NTE
 - ㉖ 10' PUC, DE & NTE
 - ㉗ 10' PUC, DE & NTE
 - ㉘ 10' PUC, DE & NTE
 - ㉙ 10' PUC, DE & NTE
 - ㉚ 10' PUC, DE & NTE
 - ㉛ 10' PUC, DE & NTE
 - ㉜ 10' PUC, DE & NTE
 - ㉝ 10' PUC, DE & NTE
 - ㉞ 10' PUC, DE & NTE
 - ㉟ 10' PUC, DE & NTE
 - ㊱ 10' PUC, DE & NTE
 - ㊲ 10' PUC, DE & NTE
 - ㊳ 10' PUC, DE & NTE
 - ㊴ 10' PUC, DE & NTE
 - ㊵ 10' PUC, DE & NTE
 - ㊶ 10' PUC, DE & NTE
 - ㊷ 10' PUC, DE & NTE
 - ㊸ 10' PUC, DE & NTE
 - ㊹ 10' PUC, DE & NTE
 - ㊺ 10' PUC, DE & NTE
 - ㊻ 10' PUC, DE & NTE
 - ㊼ 10' PUC, DE & NTE
 - ㊽ 10' PUC, DE & NTE
 - ㊾ 10' PUC, DE & NTE
 - ㊿ 10' PUC, DE & NTE

| INDIVIDUAL SHEETS INDEX | | |
|-------------------------|---|----|
| 1 | Sheet Number Layout | 11 |
| 2 | Certifications, Declarations and Vicinity Map | 12 |
| 3 | Notes, Line and Curve Tables | 13 |
| 4 | Blocks 1 and 2 | 14 |
| 5 | Blocks 1, 2 and 3 | 15 |
| 6 | Blocks 1 and 3 | 16 |
| 7 | Block 2 | 17 |
| 8 | Blocks 2 and 3 | 18 |
| 9 | Blocks 1 and 3 | 19 |
| 10 | Blocks 2 and 3 | 20 |
| 11 | Blocks 1, 3 and 4 | |
| 12 | Blocks 4 and 5, Six Ranch Maps | |
| 13 | Blocks 1 and 4 | |
| 14 | Blocks 4 and 5 | |
| 15 | Blocks 1 and 5 | |
| 16 | Blocks 4 and 5 | |
| 17 | Blocks 1, 4 and 5 | |
| 18 | Blocks 4, 5, 7 and 8 | |
| 19 | Blocks 4, 8, and 9 | |
| 20 | Blocks 1 and 8 | |



PLAT OF
REPUBLIC GRAND RANCH
SECTION 5
 CONTAINING 9 BLOCKS, 206 LOTS, 3 RESERVES

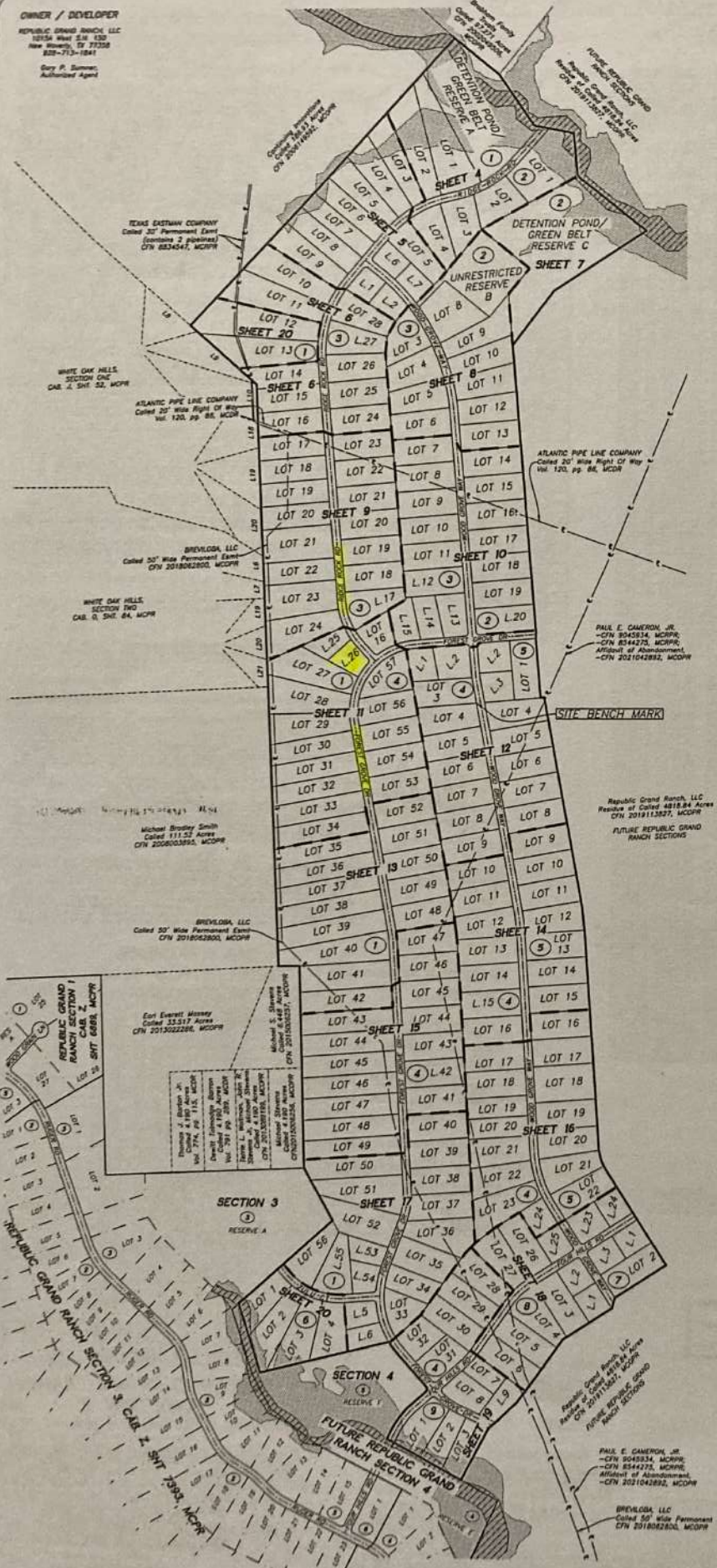
A SUBDIVISION CONTAINING 481.98 ACRES OF LAND,
 OUT OF THE RESIDUE OF THE 4818.84 ACRE
 REPUBLIC GRAND RANCH, LLC TRACT, CLERK'S FILE
 No. 2019113827, MONTGOMERY COUNTY
 OFFICIAL PUBLIC RECORDS
 JOSE MARIA DE LA GARZA SURVEY, A-15
 MONTGOMERY COUNTY, TEXAS

JULY 2021
 Numeris, Inc.
 P.O. Box 888, The Woodlands, TX 77380
 TWP15.E Form No. 10-04-2010
 936-661-3323

DOC # 2021138073
 CASHIER DOC. SHEET 7/88

OWNER / DEVELOPER
 REPUBLIC GRAND RANCH, LLC
 12154 West 5th St
 New Haven, TX 77058
 832-713-1841
 Gary P. Sanner,
 Authorized Agent

| INDIVIDUAL SHEETS INDEX | | | |
|-------------------------|--|----|---------------------------------|
| 1 | Sheet Number Layout | 11 | Blocks 1, 3 and 4 |
| 2 | Certifications, Dedications and Vicinity Map | 12 | Blocks 4 and 5, Site Bench Mark |
| 3 | Notes, Line and Curve Tables | 13 | Blocks 1 and 4 |
| 4 | Blocks 1 and 2 | 14 | Blocks 4 and 5 |
| 5 | Blocks 1, 2 and 3 | 15 | Blocks 1 and 4 |
| 6 | Blocks 1 and 3 | 16 | Blocks 4 and 5 |
| 7 | Block 2 | 17 | Blocks 1, 4 and 5 |
| 8 | Blocks 2 and 3 | 18 | Blocks 4, 5, 7 and 8 |
| 9 | Blocks 1 and 3 | 19 | Blocks 4, 8, and 9 |
| 10 | Blocks 2 and 3 | 20 | Blocks 1 and 6 |



- LEGEND**
- ④ Block Number
 - 3/4" Found Iron Pipe, size and cap as noted
 - 1/2" Found Iron Pipe, size and cap as noted
 - Found 5/8" Iron Rod with 1-3/4" blue plastic cap n/a
 - MICHAEL A. NANKEN RPLS 6533, UNLESS otherwise noted
 - ▨ Paved Area in Zone AE
 - ▨ Flood Zone AE
 - CFN Clerk's File Number
 - MCDN Montgomery County Deed Records
 - MCDPR Montgomery County Official Public Records
 - MCPRR Montgomery County Real Property Records
 - MCPFN Montgomery County Plat Records
 - MFE Minimum Finished Floor Elevation
 - PLC, DE & NTC Public Utility Easement, Drainage Easement & Nature Trail Easement
 - VKDE Variable Width Private Drainage Easement
 - VB Vegetative Buffer

THIS SHEET NOT TO SCALE
 PLAT OF

REPUBLIC GRAND RANCH SECTION 5

CONTAINING 9 BLOCKS, 206 LOTS, 3 RESERVES
 A SUBDIVISION CONTAINING 481.98 ACRES OF LAND,
 OUT OF THE RESIDUE OF THE 4818.84 ACRE
 REPUBLIC GRAND RANCH, LLC TRACT, CLERK'S FILE
 No. 2019113827, MONTGOMERY COUNTY
 OFFICIAL PUBLIC RECORDS
 JOSE MARIA DE LA GARZA SURVEY, A-15
 MONTGOMERY COUNTY, TEXAS

JULY 2021

NANKEN, Inc.
 P.O. Box 1138, New Haven, TX 77058
 (714) 636-3323
 936-661-3323

DOC # 2021136073
 Cabinet 002 Sheet 7788

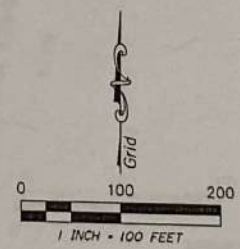
WHITE OAK HILLS, SECTION TWO
CAB. 0, sht. 8A, MCPR



- LEGEND**
- ① Block Number
 - 1/2" Found Iron Pipe, size and cap as noted
 - 3/4" Found Iron Rod, size and cap as noted
 - 1" Found 2x4 5/8" Iron Rod with 1-5/4" Blue plastic cap and 3/4" DIAM. A. HAMMER NPLS 6553; LXL650 otherwise noted
 - Flimsy Areas in Zone AE
 - Flood Zone AE
 - Clerk's File Number
 - Montgomery County Deed Records
 - Montgomery County Official Public Records
 - Montgomery County Real Property Records
 - Montgomery County Plat Records
 - Minimum Finished Floor Elevation
 - P.U.E. DE & NTE Public Utility Easement, Drainage Easement & Nature Trail Easement
 - V.D.E. Variable Width Private Drainage Easement
 - Vegetative Buffer

INDIVIDUAL SHEETS INDEX

| Sheet Number | Layout | Sheet Number | Layout |
|--------------|--|--------------|---------------------------------|
| 1 | Sheet Number Layout | 11 | Blocks 1, 3 and 4 |
| 2 | Certifications, Dedications and Vicinity Map | 12 | Blocks 4 and 5, Site Bench Mark |
| 3 | Notes, Line and Curve Tables | 13 | Blocks 1 and 4 |
| 4 | Blocks 1 and 2 | 14 | Blocks 4 and 5 |
| 5 | Blocks 1, 2 and 3 | 15 | Blocks 1 and 4 |
| 6 | Blocks 1 and 3 | 16 | Blocks 4 and 5 |
| 7 | Block 2 | 17 | Blocks 1, 4 and 6 |
| 8 | Blocks 2 and 3 | 18 | Blocks 4, 5, 7 and 8 |
| 9 | Blocks 1 and 3 | 19 | Blocks 4, 8, and 9 |
| 10 | Blocks 2 and 3 | 20 | Blocks 1 and 6 |



**PLAT OF
REPUBLIC GRAND RANCH
SECTION 5**

CONTAINING 9 BLOCKS, 206 LOTS, 3 RESERVES
A SUBDIVISION CONTAINING 481.98 ACRES OF LAND
OUT OF THE RESIDUE OF THE 4818.84 ACRE
REPUBLIC GRAND RANCH, LLC TRACT, CLERK'S FILE
No. 2019113827, MONTGOMERY COUNTY
OFFICIAL PUBLIC RECORDS
JOSE MARIA DE LA GARZA SURVEY, A-15
MONTGOMERY COUNTY, TEXAS

JULY 2021
Namem, Inc.
P.O. Box 1150, New Waverly, TX 77358
TSP/ELS Form No. 1034030
936-661-3325