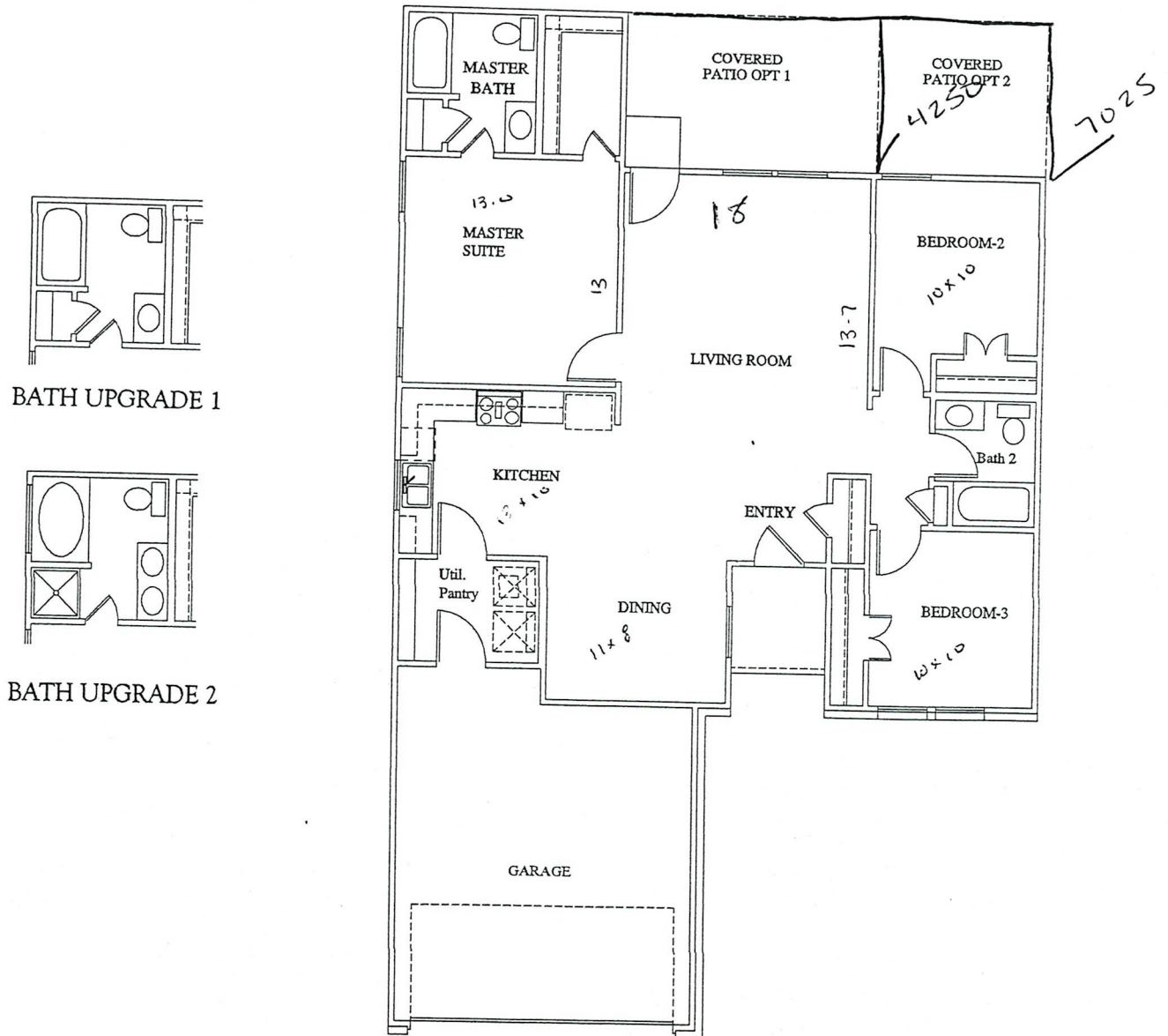




GRAND VIEW

 B U I L D E R S

L1345
 1345 SQUARE FEET*



Grand View Builders reserves the right to change prices, square footage, specifications, architectural design, make additions, deletions or modify features without notice. Revised 04/15/11.





Painted Meadows - Liberty Series

Quality Construction

- Professionally engineered post-tension foundation
- Clay brick on front of house only
- Pest Defense "Tubes in the Walls"
- Borate termite treatment
- 7/16 Green guard (R-3) sheathing wrap
- 12 gauge electrical copper wiring
- Durable windstorm strapping and bracing
- Prestart meeting with construction manager and sales
- Predrywall meeting with construction manager
- Final walk with construction manager
- 10 Year bonded builders warranty
- 3 Hour appointment at design center with professional designer

Energy Savings Features

- Energy Star certified
- Techshield® decking
- High efficiency, 14-SEER Trane® with fresh air Intake
- Programmable digital thermostat
- Energy efficient double paned insulated LoE3 windows
- Polyfoam sealant around all windows, doors and base plate
- 40 Gallon gas water heater
- Ridge vents and continuous perforated soffit for proper attic ventilation
- R-6 insulated flex duct on A/C and heating systems
- R-13 insulation in all exterior walls
- R-22 insulation in attic knee walls/sloped ceilings
- R-30 insulation in all flat ceilings
- Energy compliance inspection and certification

Distinctive Exterior Features

- 20 year composition roof shingle
- LP smart siding, soffit and trim
- Two (2) hose bibs and three (3) exterior GFCI electrical outlets
- Steel reinforced garage door
- Divided-light window accent the front elevation
- Quality Glidden® paint – two toned exterior paint
- 3' x 3' Concrete patio in rear yard
- Fully sodded front yard with deluxe landscape package
- One 15 gallon tree
- Raised six panel fiberglass front door
- 6' Privacy fence with a side gate
- 5/12 Roof pitch

Impressive Interior Features

- Congoleum in entry, kitchen, breakfast, utility and all baths
- Textured flat panel doors
- Prewired security system
- Rounded sheetrock corners
- Plush long life Mohawk® carpet with a 5 year soil and stain warranty and an 3/8 inch pad
- Wood shelving throughout
- Generous custom style 3" baseboards
- Custom 2.5" door casing throughout
- Family room blocked and pre-wired for fan
- Satin nickel lighting package
- 3 cable and 1 phone outlets
- Schlage® Builders Basics series door hardware
- Donner by Moen® bath hardware
- Security deadbolts on exterior doors

Kitchen

- Wilsonart® countertop with full cove backsplash
- 30" flat panel cabinets with shoe mold in oak or birch
- Whirlpool® Appliances including range, dishwasher and venthood (White or Black)
- Badger® garbage disposal
- 6" deep stainless steel dual compartment sink
- Delta® faucet

Bath

- Elongated toilets in all baths
- Delta® plumbing fixtures
- Lasco® bathtubs with shower surround
- Pedestal sinks in powder bath (per plan)

Grand View Builders reserves the right to change prices, specifications, product features, brand names, finishes, architectural design, make additions, deletions or modify features without notice. The features above are available in Painted Meadows Liberty Series. Included features in other communities may vary. Features displayed in our models may or may not be included standard features. Effective 5.05.2011.

