



**ELEVATION A**



**ELEVATION B**



**ELEVATION C**



**ELEVATION D**



**ELEVATION E**

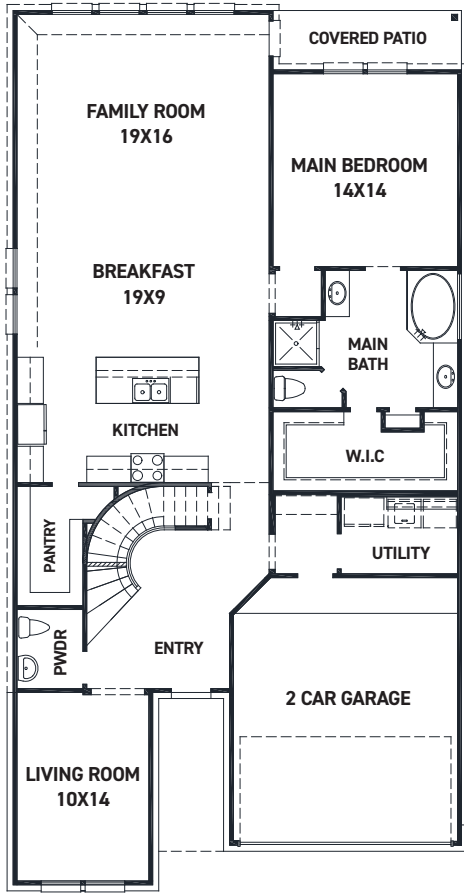
REV 10/22 (453N)



These drawings are conceptual only and are for the convenience of reference. They should not be relied upon as representations, express or implied, of the final detail of the residences. The builder expressly reserves the right to make modifications, revisions, and changes it deems desirable in its sole and absolute discretion. Dimensions and square footages are approximate and may vary with actual construction.



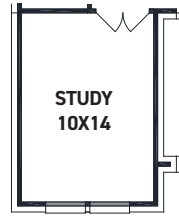
[newmarkhomes.com](http://newmarkhomes.com)



FIRST FLOOR PLAN

FEATURES:

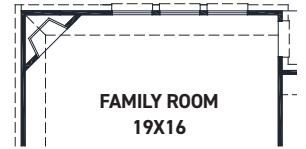
- 2,567 SQUARE FT.
- 3 BEDROOM
- 2 1/2 BATHROOM
- 2 CAR GARAGE



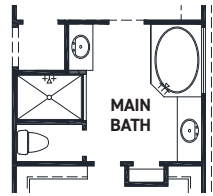
OPT. STUDY @ LIVING



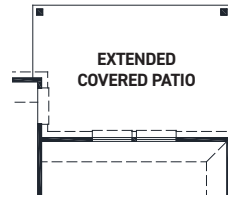
OPT. FIREPLACE W/ VAULT OPTIONS



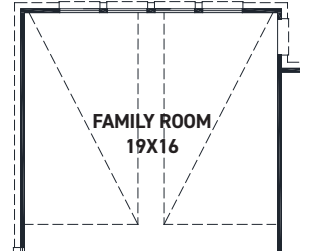
FAMILY ROOM 19X16  
OPT. FIREPLACE



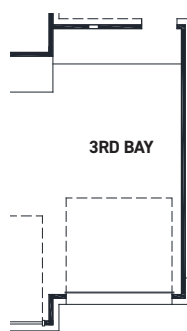
OPT. ENLARGED MAIN SHOWER W/ TUB



OPT. EXTENDED COVERED PATIO



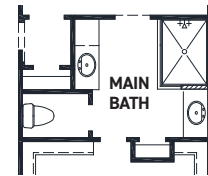
FAMILY ROOM 19X16  
OPT. POINTED VAULT



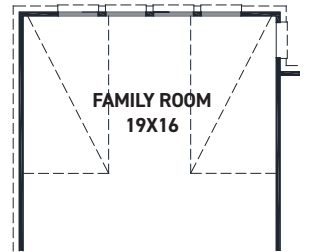
OPT. 3RD BAY



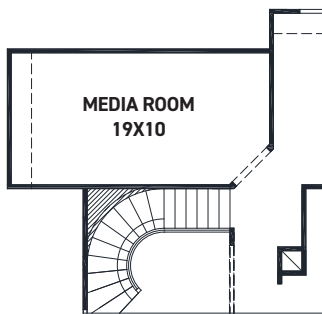
OPT. 5FT STORAGE



OPT. MAIN BATH LAYOUT W/ ENLARGED SHOWER



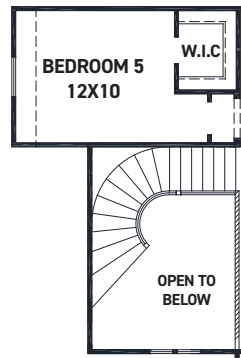
FAMILY ROOM 19X16  
OPT. ARCHED VAULT



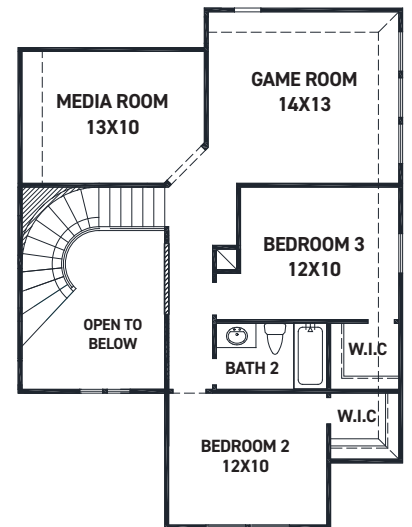
OPT. EXTENDED MEDIA ROOM



OPT. BEDROOM 4 W/ BATH 3



OPT. BEDROOM 5 @ MEDIA ROOM



SECOND FLOOR PLAN

REV 10/22 (453N)



These drawings are conceptual only and are for the convenience of reference. They should not be relied upon as representations, express or implied, of the final detail of the residences. The builder expressly reserves the right to make modifications, revisions, and changes it deems desirable in its sole and absolute discretion. Dimensions and square footages are approximate and may vary with actual construction.