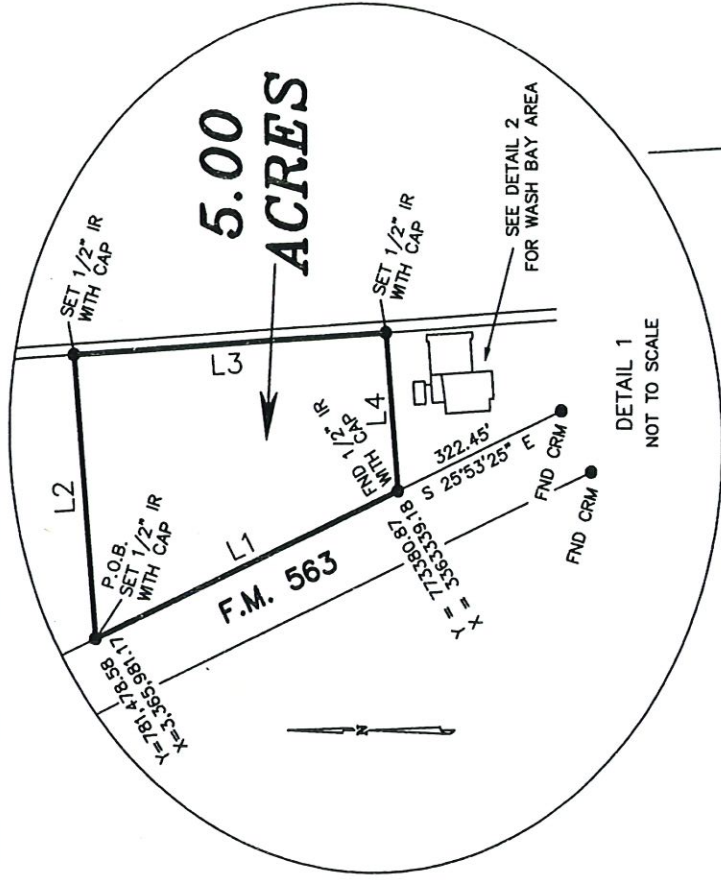




SCALE: 1 INCH = 1000'

LINE	BEARING	DISTANCE
L1	N 25°53'25" W	598.54'
L2	N 86°05'54" E	505.20'
L3	S 03°54'06" E	555.00'
L4	S 86°05'54" W	281.10'



DETAIL 1
NOT TO SCALE

**BAKER M. SPINKS LEAGUE
A - 108**

**JAMES MCFADDIN LEAGUE
A - 76**



552.967 ACRES
CALLED TRACT 2
VOL. 1631 PG. 300

FOC
FND 1/2" IR
Y = 774470.35
X = 3362810.38



2451.407 ACRES
CALLED TRACT 1
PCS PHOSPHATE CO., INC.
TO
ASTO LIBERTY, L.L.C.
AUGUST 14, 1996
VOLUME 1631 AT PAGE 300
OFFICIAL PUBLIC RECORDS
LIBERTY COUNTY



DETAIL 2
NOT TO SCALE

**WASH BAY
AREA**



438.670 ACRES
CALLED TRACT 3
VOL. 1631 PG. 300

NOTE: ALL BEARINGS ARE LAMBERT GRID BEARINGS AND ALL COORDINATES REFER TO THE STATE PLANE COORDINATE SYSTEM, SOUTH CENTRAL ZONE, 1927 DATUM, AS DEFINED BY ARTICLE 21.071 OF THE NATURAL RESOURCES CODE OF THE STATE OF TEXAS. ALL DISTANCES ARE ACTUAL DISTANCES. SCALE FACTOR = 0.99999049.

REFERENCE IS MADE TO THE METES AND BOUNDS DESCRIPTION OF EVEN DATE ACCOMPANYING THIS PLAT.

TRINITY FIELD SERVICES, L.P.
SURVEY OF A 5.00 ACRE TRACT
SITUATED IN THE
JAMES MCFADDIN LEAGUE, A - 76
LIBERTY COUNTY, TEXAS

HUTCHISON & ASSOCIATES
ENGINEERS & SURVEYORS
1209 DECKER DRIVE, BAYTOWN, TEXAS
281/422-8213

I, JULIENNE RAMSEY, REGISTERED PROFESSIONAL LAND SURVEYOR NO. 4379 DO HEREBY CERTIFY THAT THIS PLAT DELINEATES THE RESULTS OF A SURVEY MADE ON THE GROUND UNDER MY SUPERVISION ON JULY, 13, 2010 AND THAT ALL LINES, BOUNDARIES AND LANDMARKS ARE ACCURATELY SHOWN HEREON.

WITNESS MY HAND AND SEAL AT BAYTOWN, TEXAS, THIS THE 11TH DAY OF AUGUST, A. D., 2010.

Julienne Ramsey
REGISTERED PROFESSIONAL LAND SURVEYOR
NO. 4379

SCALE: 1" = 1000'

JOB NO.: 103769

DRWN-NAME: 3769.DWG

DRAWN BY: AR

CHECKED BY: AJR