

COMMANDER ENTERPRISES

WWW.CECORP.IO



COMMANDER
ENTERPRISES



7924, SEXTON ST,

3  2.5 

HOUSTON TEXAS

2,240 sq.ft.



LISTING PRICE

\$350,000

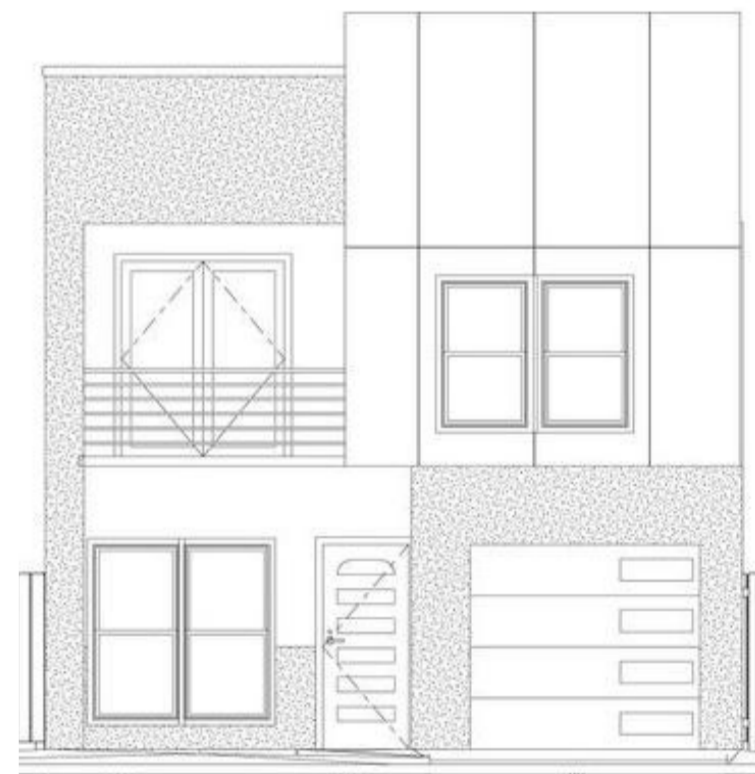
HOUSE FEATURES

A modern house with a façade featuring a balcony, a one-car garage, stucco and stone cladding, a front covered porch, and large windows may have a sleek, contemporary design that emphasizes clean lines and an open floor plan. The stucco and stone cladding may add a natural and durable texture to the exterior, while the balcony and front porch provide outdoor living spaces for relaxing and entertaining. The large windows would allow for ample natural light to enter the house and give a good view of the surroundings. The one-car garage would provide convenient off-street parking. The overall design would likely be one that is both functional and visually appealing.

- Use of natural materials such as wood, stone, and glass
- Integration of technology, such as smart home systems
- Use of sustainable and energy-saving features.
- Large outdoor living spaces, such as decks and patios
- Use of neutral color palettes and minimal decor
- Use of natural light and use of large windows.
- Use of contemporary and minimalist design elements.

3  **2.5** 

2,240 sq.ft.





OPEN FLOOR PLAN

1 CAR GARAGE

\$350,000

FLOOR PLANS

A great room: This is a large, open space that combines the living room, dining room, and kitchen into one area.

Flexibility: Open floor plans allow for more flexibility in furniture placement and decorating.

Increased natural light: With fewer walls, open floor plans allow for more natural light to flow through the space.

Improved socialization: Open floor plans encourage socialization by allowing people to be in different areas of the house while still being able to interact with one another.

DESIGN ELEMENTS

Multi-use spaces: An open floor plan can allow for multiple uses of a space, such as a living room that can also be used as a home office.

Large windows: Many open floor plans feature large windows that let in natural light and provide views of the outdoors.

Contemporary design: Open floor plans are often associated with contemporary and modern design styles.

High Ceiling: Open floor plans often include high ceilings which make the space feel even more open and airy.

3  2.5 

2,240 sq.ft.



INTERIOR

Better flow: Open floor plans improve the flow of the house, making it easier to move from one area to another.

Open Kitchen: A kitchen that opens to the living and dining area, allowing for easy entertaining and conversation while cooking and eating.

Rooms: **3**
Garage **1**
Year built: **2023**

\$350,000





INTERIOR FEATURES:

- Central Air Conditioning
- Open floor plan
- High Ceilling
- Luxury Bathrooms

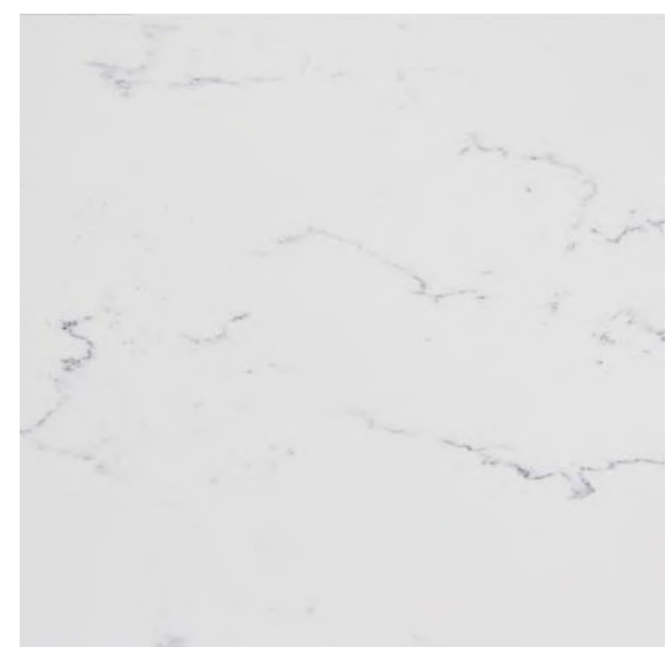
APPLIANCES:

- Stove
- Microwave
- Dishwasher
- Air conditioner

3  **2.5** 

Flooring:

- CARRARA 24X48 PORCELAIN TILE
- CARPET



HOUSE MORE COMFORTABLE AND BENEFICIAL

Ultimately, the best floor plan for a house is one that meets the specific needs and desires of the homeowner, and one that they can see themselves living in for many years to come.

the best features for a house will depend on the specific needs and preferences of the inhabitants, and a combination of features that provide a comfortable and healthy living environment.

Rooms: **3**
Garage: **1**
Year built: **2023**

\$350,000





SAFETY AND SECURITY

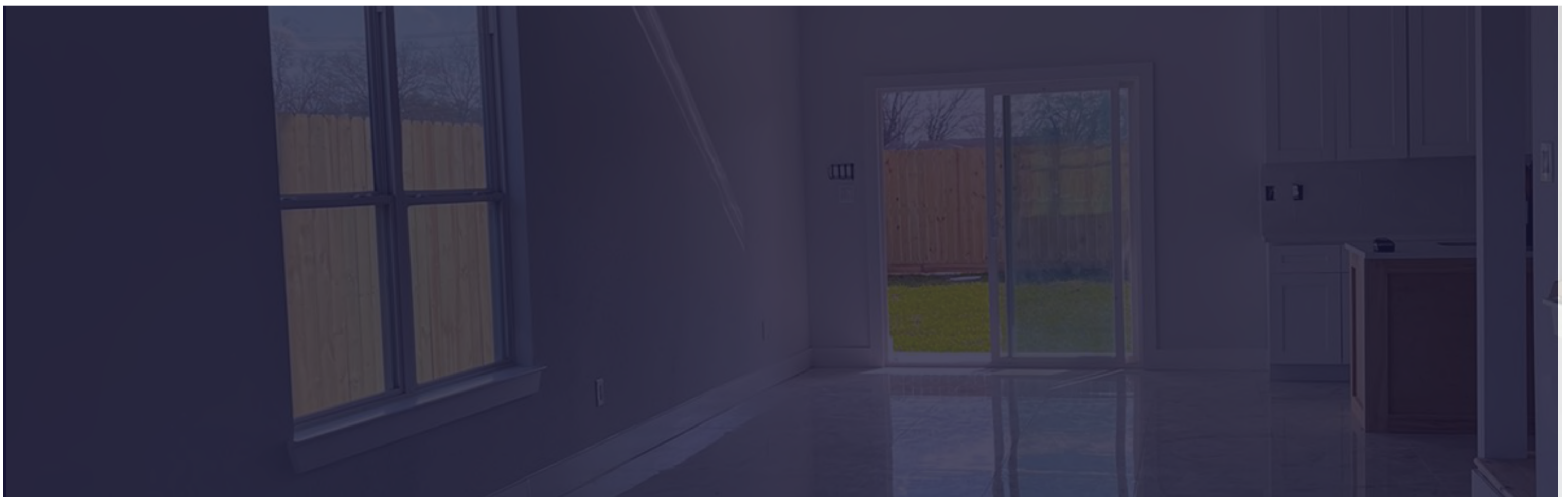
Safety and security: A house that is designed with safety and security in mind, such as with good lighting, a secure entry system, and fire safety features, can provide peace of mind for the inhabitants.

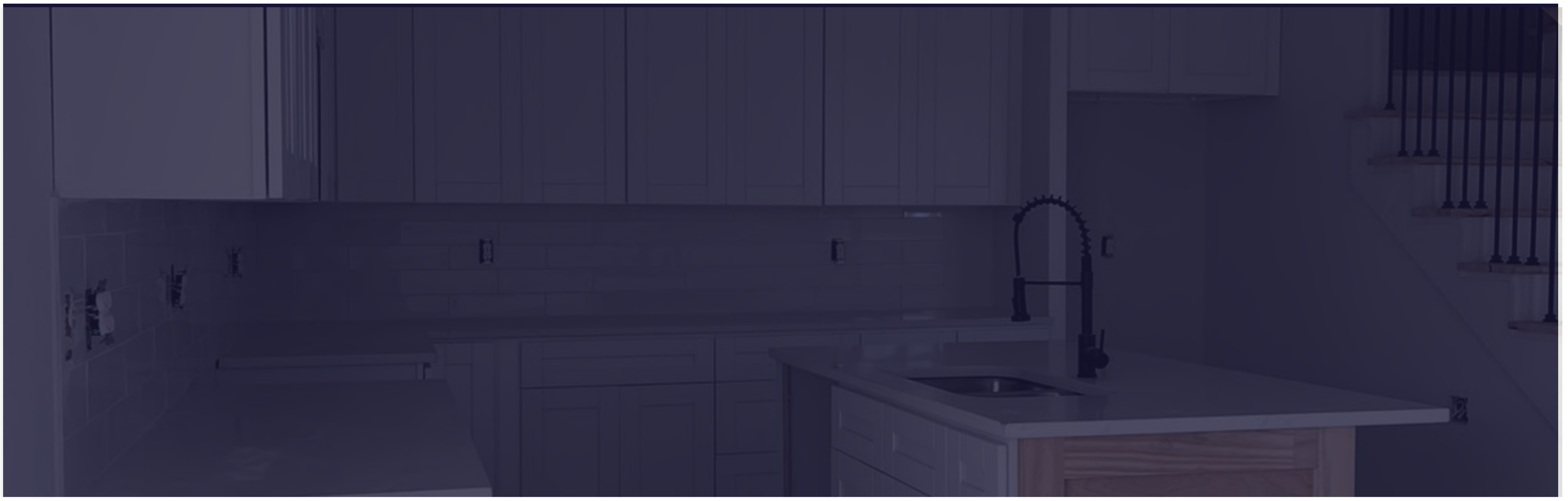
ACCESSIBILITY

A house that is designed with accessibility in mind, such as with wide doorways, no-step entrances, and grab bars in the bathroom, can make it easier for people with mobility issues to move around the house.

MULTI-FUNCTIONALITY

A house that is designed with accessibility in mind, such as with wide doorways, no-step entrances, and grab bars in the bathroom, can make it easier for people with mobility issues to move around the house.







TRAY CEILING

A tray ceiling is a ceiling that is recessed in the center, creating a three-dimensional effect, are often used in formal dining rooms or bedrooms.

Tray ceilings can be lit with recessed or pendant lights to add ambient or accent lighting, or with a chandelier for a more formal look.

Ceilings are a great way to add character and interest to a room and can be decorated to fit any style or aesthetic.

KITCHEN FEATURES

Minimalist kitchens feature clean lines with minimal ornamentation and a focus on simplicity.

feature a neutral color palette, such as white, gray, or black, with minimal use of color and pattern.

Sleek, high-quality materials: Minimalist kitchens often feature sleek, high-quality materials, such as stainless steel, concrete, or natural stone, that are easy to clean and maintain.



Natural Beauty: Wooden stairs have a natural beauty that adds warmth and character to a space. They can be stained or painted to match the existing decor of a home.

Durability: Wood stairs are known to be durable and sturdy, they can last for many years with proper maintenance.

Customizable: Wooden stairs can be customized to fit any space and design style, they can be designed in different shapes, sizes, and styles, such as curved or spiral.

Versatile: Wooden stairs can be used in a variety of settings, both inside and outside of a home. They can be used for both indoor and outdoor spaces, such as decks and balconies.

Rooms: **3**
Garage **1**
Year built: **2023**

\$350,000





An outdoor covered patio provides protection from rain, sun, and wind, making it a comfortable space to enjoy regardless of the weather.

Covered patio can be used for a variety of purposes, such as dining, entertaining, or relaxing. It can also be outfitted with features such as a fireplace, grill, or even a TV, to make it a multi-functional space.

Patio is a great way to add a comfortable and functional outdoor living space to a home. It can be designed to fit any style and purpose, and can be used year-round to enjoy the outdoors.



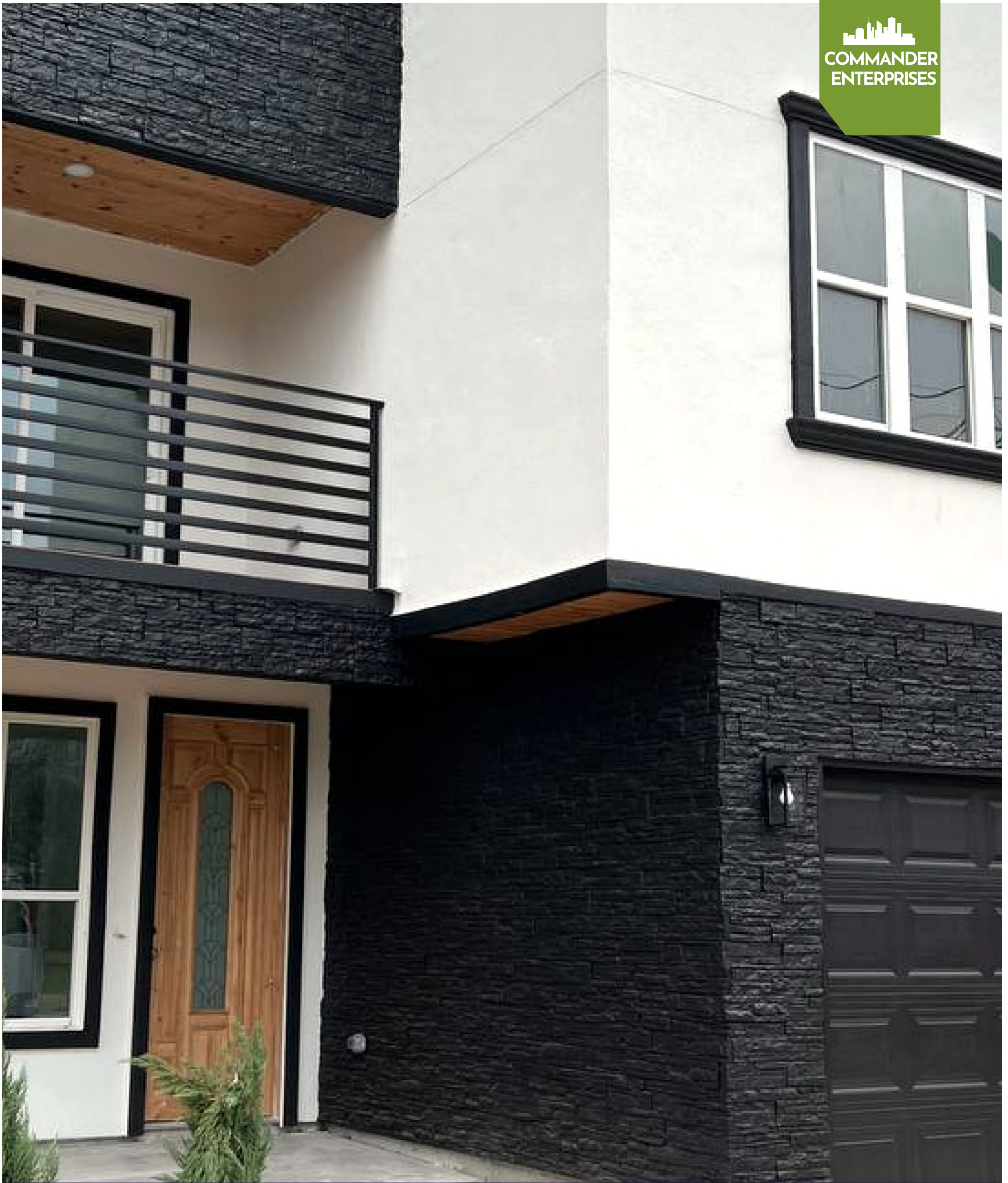
PROVIDED APPLIANCES

- Refrigerator
- Microwave
- Stove
- Dishwasher



\$350,000





WWW.CECORP.IO

AVAILABLE

COMMANDER ENTERPRISES