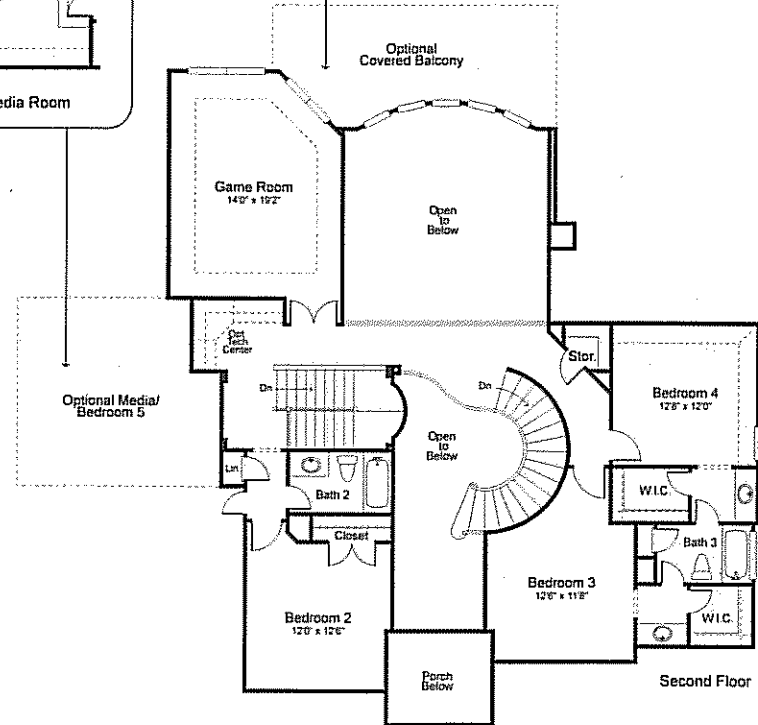
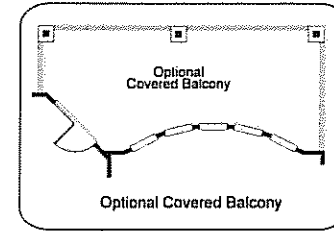
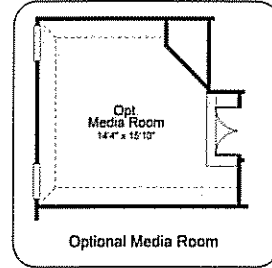
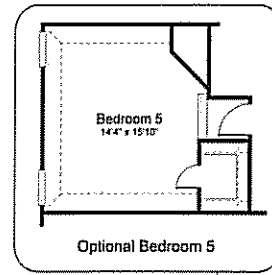
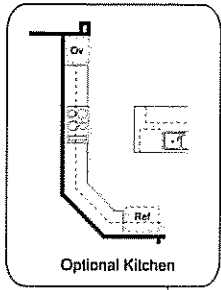
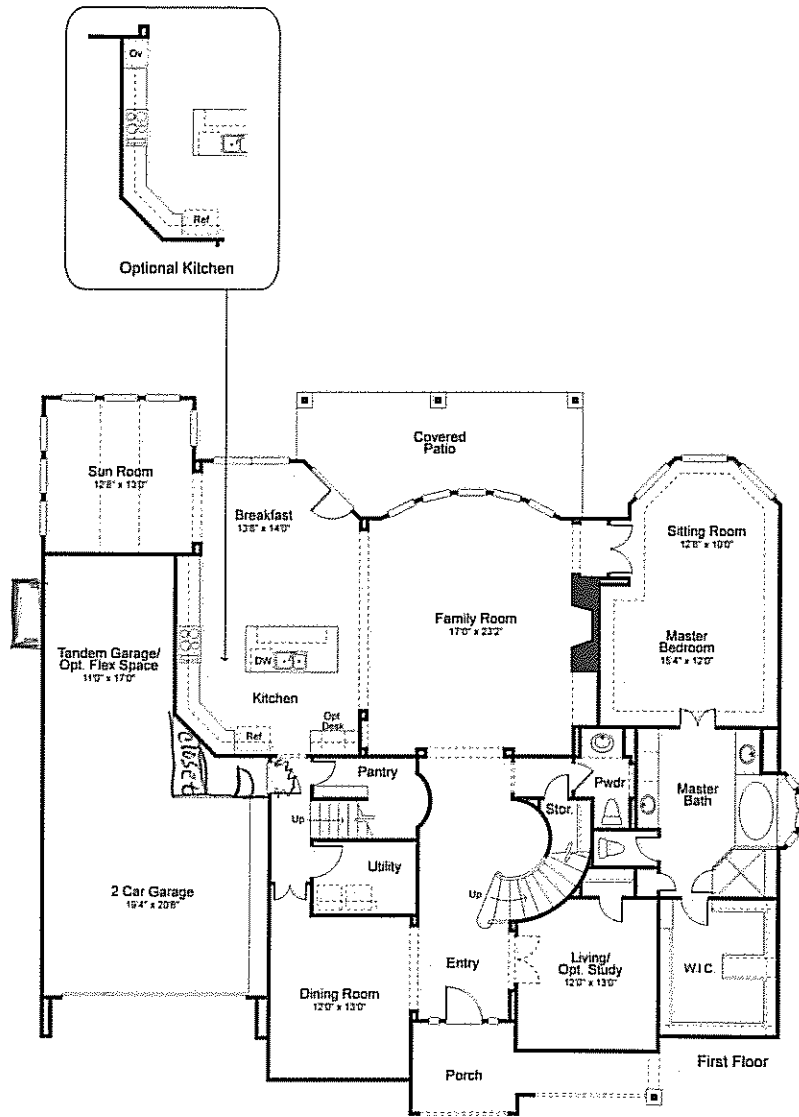
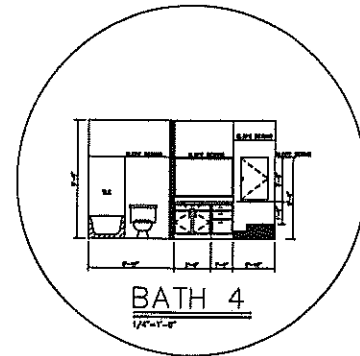
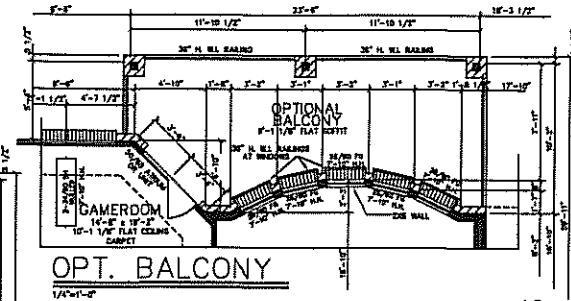
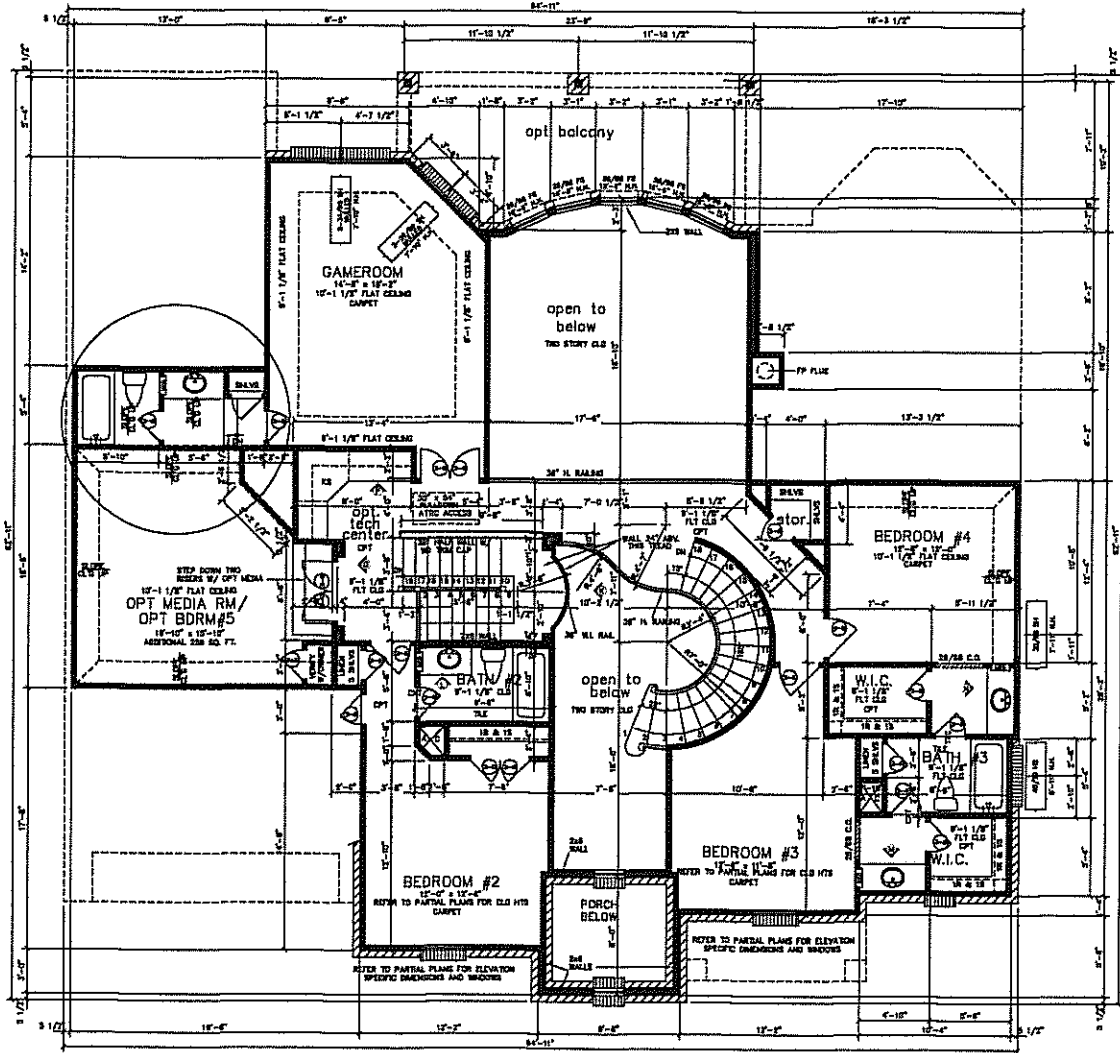


FLOOR PLANS



2007





*COMMUNITY SPEC AND
CHANGE ORDERS, SUPERCEDE DRAWINGS
(CURRENT FEATURE LINE - SM 80'S)

SECTION: SEVEN MEADOWS - MANORS
DATE: 22/01/08
SITE: RICHARDSON
ADDRESS: 7706 BULRUSH CANYON TRAIL

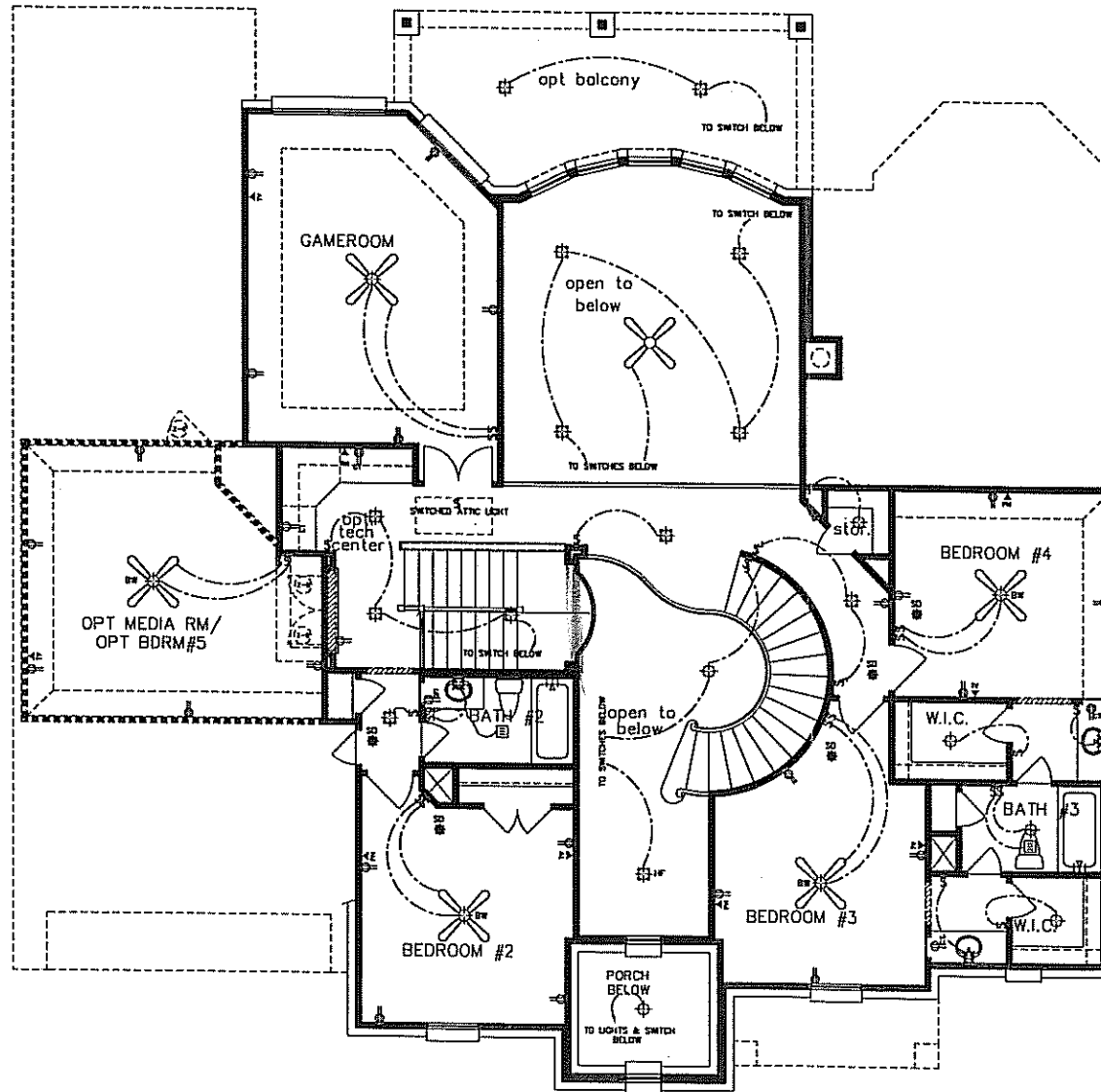
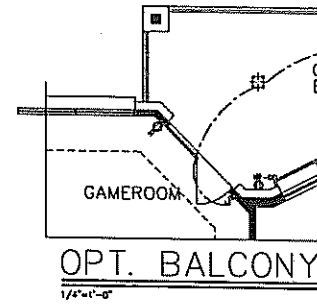
2ND FLOOR PLAN
1/4"=1'-0"

REVISIONS	
NO.	DATE / DESCRIPTION
1	8-5-08
	AMERICAD
JOB NO. 0238	
DATE 11-18-03	
AMERICAD	

GARY / PASSDALE, INC
DESIGNER
COPYRIGHT © 2003

MILANO 2007
Taylor Woodrow

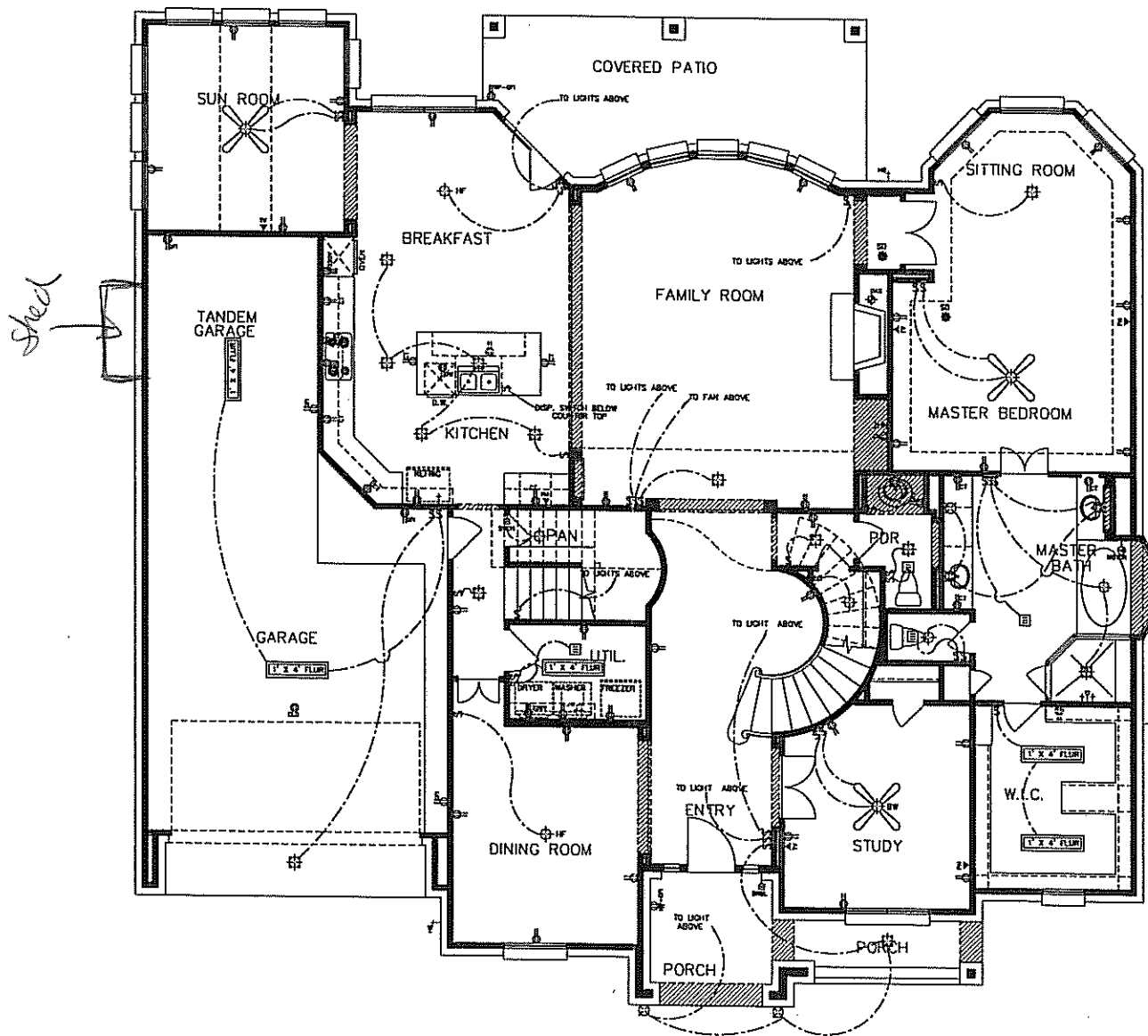
SHEET NO. 2 OF 8
DRAWING NO. 100-1000



ELECTRICAL LEGEND	
Ⓢ	SWITCH
ⓈⓈ	THREE-WAY SWITCH
ⓈⓈⓈ	FOUR-WAY SWITCH
ⓈⓈⓈⓈ	RHEOSTAT
ⓈⓈⓈⓈⓈ	DUPLEX
ⓈⓈⓈⓈⓈⓈ	COUNTERTOP DUPLEX
ⓈⓈⓈⓈⓈⓈⓈ	SPLIT WIRE DUPLEX
ⓈⓈⓈⓈⓈⓈⓈⓈ	QUADRUPLEX
ⓈⓈⓈⓈⓈⓈⓈⓈⓈ	CEILING DUPLEX
ⓈⓈⓈⓈⓈⓈⓈⓈⓈⓈ	FLOOR DUPLEX
ⓈⓈⓈⓈⓈⓈⓈⓈⓈⓈⓈ	PHONE OUTLET
ⓈⓈⓈⓈⓈⓈⓈⓈⓈⓈⓈⓈ	TV OUTLET
ⓈⓈⓈⓈⓈⓈⓈⓈⓈⓈⓈⓈⓈ	THERMOSTAT
ⓈⓈⓈⓈⓈⓈⓈⓈⓈⓈⓈⓈⓈⓈ	SMOKE DETECTOR
ⓈⓈⓈⓈⓈⓈⓈⓈⓈⓈⓈⓈⓈⓈⓈ	JUNCTION
ⓈⓈⓈⓈⓈⓈⓈⓈⓈⓈⓈⓈⓈⓈⓈⓈ	220 VOLT OUTLET
ⓈⓈⓈⓈⓈⓈⓈⓈⓈⓈⓈⓈⓈⓈⓈⓈⓈ	CEILING LIGHT
ⓈⓈⓈⓈⓈⓈⓈⓈⓈⓈⓈⓈⓈⓈⓈⓈⓈⓈ	RECESSED CEILING LIGHT
ⓈⓈⓈⓈⓈⓈⓈⓈⓈⓈⓈⓈⓈⓈⓈⓈⓈⓈⓈ	WALL HUNG LIGHT
ⓈⓈⓈⓈⓈⓈⓈⓈⓈⓈⓈⓈⓈⓈⓈⓈⓈⓈⓈⓈ	EYEBALL LIGHT
ⓈⓈⓈⓈⓈⓈⓈⓈⓈⓈⓈⓈⓈⓈⓈⓈⓈⓈⓈⓈⓈ	RECESSED EYEBALL LIGHT
ⓈⓈⓈⓈⓈⓈⓈⓈⓈⓈⓈⓈⓈⓈⓈⓈⓈⓈⓈⓈⓈⓈ	VENT
ⓈⓈⓈⓈⓈⓈⓈⓈⓈⓈⓈⓈⓈⓈⓈⓈⓈⓈⓈⓈⓈⓈⓈ	VENT AND LIGHT
ⓈⓈⓈⓈⓈⓈⓈⓈⓈⓈⓈⓈⓈⓈⓈⓈⓈⓈⓈⓈⓈⓈⓈⓈ	HEAT AND LIGHT
ⓈⓈⓈⓈⓈⓈⓈⓈⓈⓈⓈⓈⓈⓈⓈⓈⓈⓈⓈⓈⓈⓈⓈⓈⓈ	HEAT AND VENT
ⓈⓈⓈⓈⓈⓈⓈⓈⓈⓈⓈⓈⓈⓈⓈⓈⓈⓈⓈⓈⓈⓈⓈⓈⓈⓈ	HEAT, VENT AND LIGHT
ⓈⓈⓈⓈⓈⓈⓈⓈⓈⓈⓈⓈⓈⓈⓈⓈⓈⓈⓈⓈⓈⓈⓈⓈⓈⓈⓈ	LANDSCAPING LIGHT
ⓈⓈⓈⓈⓈⓈⓈⓈⓈⓈⓈⓈⓈⓈⓈⓈⓈⓈⓈⓈⓈⓈⓈⓈⓈⓈⓈⓈ	FLOODLIGHT

SMOKE DETECTORS TO BE LOCATED IN ALL SLEEPING ROOMS AND OUTSIDE EACH SLEEPING ROOM IN CLOSE PROXIMITY
SMOKE DETECTORS MUST BE INTERCONNECTED AND PROVIDED W/ BATTERY BACKUP
ALL KITCHEN & BATH RECEPTACLES AT COUNTER TOPS LABELED "GFI" TO HAVE GROUND FAULT CIRCUIT PROTECTION
VERIFY LOCATION OF ELECTRICAL PANEL AND SERVICE ENTRANCE W/ ELEC. CONTRACTOR





SMOKE AND G
SMOKE AND P
ALL IN
LABELS
VERIFY
AND S