

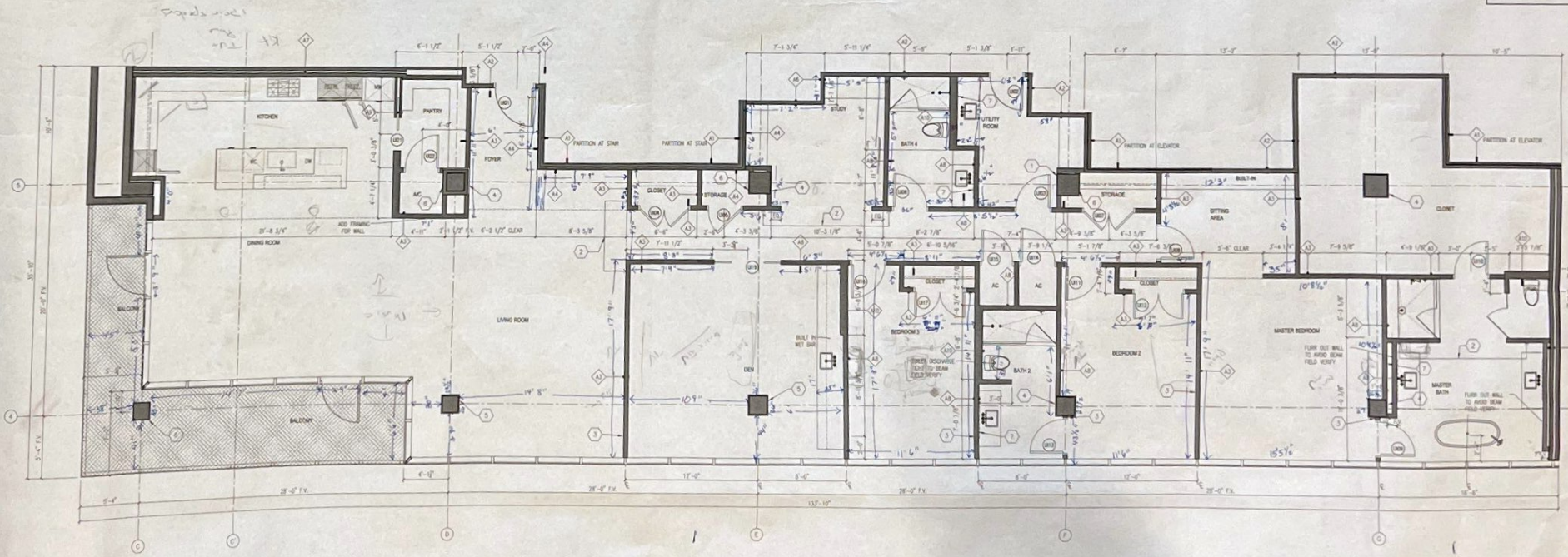
ENLARGED REFLECTED CEILING PLAN - UNIT 1101 3

- 1. DIMENSIONS**
VERIFY ALL DIMENSIONS AND CONDITIONS AND NOTIFY ARCHITECT OF ANY DISCREPANCIES FOR CLARIFICATION PRIOR TO PROCEEDING WITH WORK. UNLESS OTHERWISE NOTED, DIMENSIONS ARE TYPICALLY REFERENCED AS FOLLOWS:
(A) FINISH FACE OF STEEL WALLS, NO FINISHES INCLUDED
(B) FINISH FACE OF CMU OR CONCRETE WALLS, NO FINISHES INCLUDED
(C) CENTERLINE OF WALLS
(D) STRUCTURAL ELEMENTS ARE DIMENSIONED TO THE REFERENCED SIDE
(E) CENTERLINE OF CEILING, OPENING, FIXTURES, AND CASINGS
(F) FLOOR VESTIBLES ARE TYPICALLY LOCATED 4" FROM WALLS; WALL NETWORKS OR CENTERLINE OF ROOM, UNLESS OTHER DIMENSIONS
- 2. FLOOR DRIVING SLIPS FLOOR TO DRIVING**
- 3. PARTITIONS - PARTITIONS ARE TYPE UNLESS SPECIFIED, REFER TO PLAN. REFER TO ARCH FOR PARTITION SPEC.**
- 4. DOORS - REFER TO ARCH & ARCH FOR DOOR & HARDWARE SCHEDULES.**
- 5. CABINETS - REFER TO MILLWORK DRAWINGS.**
- 6. FINISHES - REFER TO FINISH PLANS AND ELEVATIONS.**
- 7. CEILING MOUNTED FIXTURES AND DEVICES**
UNLESS OTHERWISE NOTED, ARE TYPICALLY CENTERED IN ROOMS, SPACES, AND CORRIDORS. MULTIPLE DEVICES SHALL BE ALIGNED AND EQUAL SPACED OVER STRAIGHT DISTANCES.
- 8. CEILING HEIGHTS**
VERIFY ALL CEILING HEIGHTS FOR INSTALLATION OF CEILING HEIGHTS SHOWN ON PLAN AND NOTIFY ARCHITECT OF ANY DISCREPANCIES FOR CLARIFICATION PRIOR TO PROCEEDING WITH WORK.
SHADED AREAS DENOTE LIMITS OF FINISHED ROOM DROP CEILING.
- 9. INTERIOR CHIMNEYS**
REFER TO INTERIOR DRAWINGS FOR SPECIFIC INTERIOR CHIMNEY PLAN AND CROSS SECTIONS.
- 10. FLOOR SLAB PLUMBING PENETRATIONS**
LOCAL PLUMBING PENETRATIONS TO CLEAR EXISTING FINISHED FLOOR SLAB PENETRATIONS, CONCRETE BEAMS, NOTIFY ARCHITECT OF POTENTIAL CONFLICTS FOR FURTHER CLARIFICATION PRIOR TO CEILING GUESTS LOCATIONS.

FLOOR PLAN GENERAL NOTES 2B

- 1 ALIGN FACE OF WALL WITH FACE OF COLUMN
- 2 ALIGN FACE OF WALLS
- 3 ALIGN C. OF MULLION WITH C. OF WALL
- 4 CENTER CIP. W. FINISH ON 1/2" FORMING CHANNELS OVER COLUMN AND ALIGNED WITH FINISH FACE OF ADJACENT WALL
- 5 GLEAD EXPOSED JOINTS OF CONCRETE COLUMN WITH 5/8" CIP. W. ON 1/2" FORMING CHANNELS - RE. 17/1031
- 6 PLASTER OVER FINISH OVER EXISTING CONCRETE COLUMN, LEAVE TOPPLE FINISH
- 7 SUBSTITUTE 18-GA. METAL STEEL WALL FINISHING AND ADD SOLID WOOD BLOCKING BEHIND WALL Cavity TO ANCHOR AND SUPPORT WALL MOUNTED VANITY CABINET AND COUNTERTOP.

KEY NOTES 2A



ENLARGED PLAN - UNIT 1101 1

