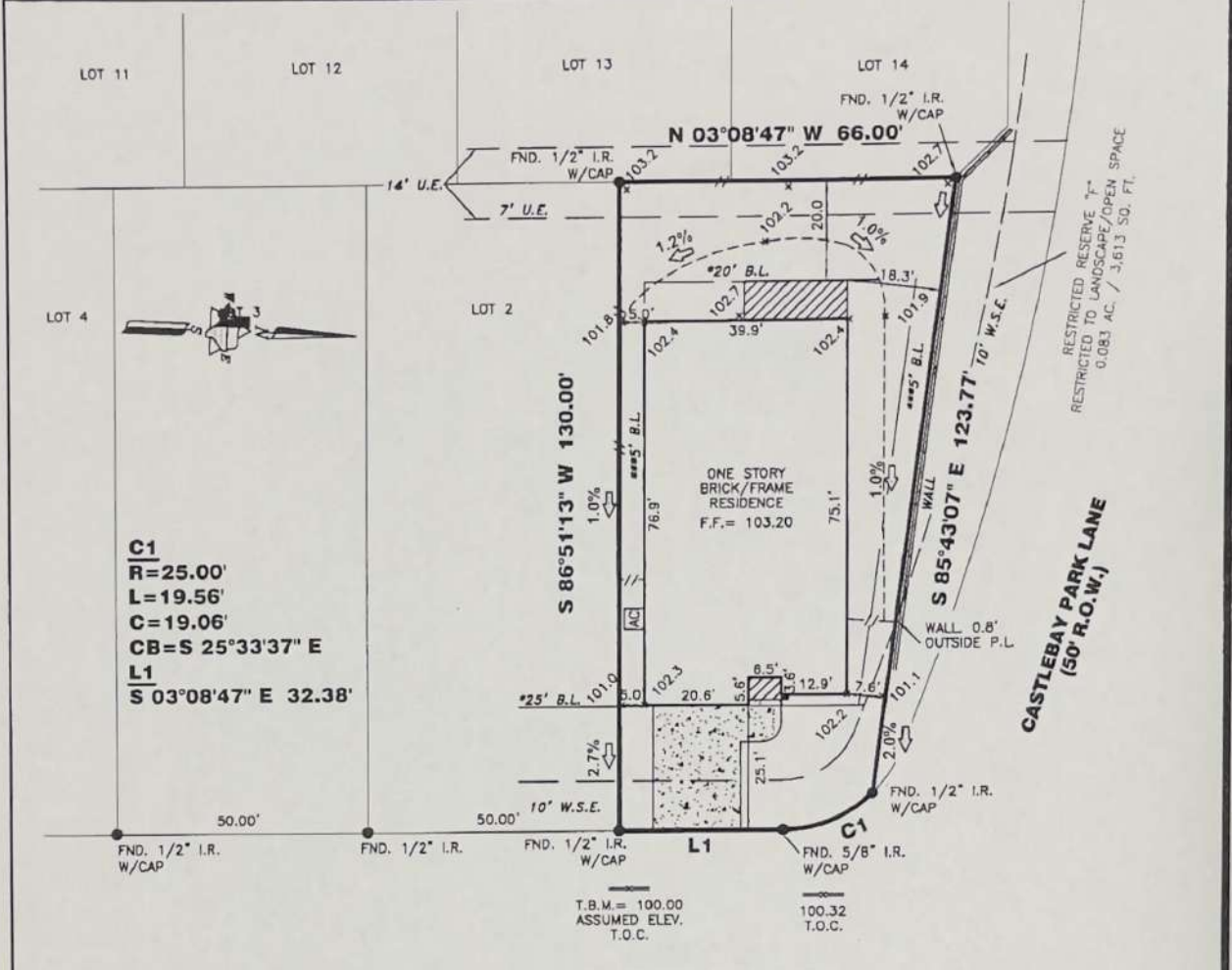


LEGEND

★ CITY ORDINANCES	BL = BUILDING LINE	I.R. = IRON ROD	CONCRETE	ELECT. BOX	FIRE HYDRANT	MANHOLE
★★ RESTRICTIVE COVENANTS	PL = PROPERTY LINE	I.P. = IRON PIPE	COVERED	AC A/C PAD	LIGHT STANDARD	WATER METER
★★★ BUILDER GUIDELINES	UE = UTILITY EASEMENT	PUE = PUBLIC UTILITY ESMT.	SOD	UTILITY POLE	UTIL. PEDESTAL	
WIRE FENCE — X —	AE = AERIAL EASEMENT	PAE = PERMANENT ACCESS ESMT.				
CHAIN LINK FENCE — O —	MH = MANHOLE	MUE = MUNICIPAL UTILITY ESMT.				
IRON FENCE — I —	FNC = FENCE	SSE = SANITARY SEWER ESMT.				
WOOD FENCE — // —	BUILDING LINE	WSE = WATER SEWER EASEMENT				
OVERHEAD UTILITIES — U —	ESMT LINE	ROW = RIGHT OF WAY				
	AERIAL ESMT	FND = FOUND				

SCALE 1"=30'



I HEREBY DECLARE THAT THE ELEVATIONS AND DRAINAGE PATTERNS SHOWN HEREON WERE DEVELOPED FROM A SURVEY OF THIS PROPERTY ACCURATELY DEPICT RELATIVE ELEVATIONS AS THEY EXISTED. THE RELATIVE ELEVATIONS AS DEPICTED, MAY CHANGE SUBSEQUENT TO THE DATE OF THIS SURVEY DUE TO ADDITION OR REMOVAL OF THE SOIL BY ACTS OF MAN; EROSION BY WIND OR WATER; OR OTHER FACTORS. THE HOMEOWNER MUST MAINTAIN THESE ELEVATIONS AND GRADES TO PROPERLY DRAIN THE WATER AWAY FROM THE HOME.

RAINFLOWER KNOLL LANE (50' R.O.W.)

FINAL LOT GRADE COMPLETE
NOTE: SOD IN FRONT YARD
SOD IN BACK YARD
SWALE IN BACK YARD

2906 RAINFLOWER KNOLL LANE

PROPERTY INFORMATION

LOT 1 BLOCK 2

SUBDIVISION:
SHADOW CREEK RANCH SF-58 REPLAT NO. 1

RECORDING INFO:
PLAT NO. 20150079, PLAT RECORDS
FORT BEND COUNTY, TEXAS

BORROWER:
AN NGUYEN

TITLE CO.
CHICAGO TITLE/EXECUTIVE TITLE CO., LTD
G.F.# ETH1601587 G.F. DATE: 06-30-16

SURVEYED FOR:
PERRY HOMES, LLC

DRAWING INFORMATION

TRI-TECH JOB NO: Y27260-16

CLIENT JOB NO:
DRAWN BY: SK

BEARING BASE: REFERRED TO PLAT NORTH

FIELD DATE: 06-14-16

FLOOD INFORMATION

F.I.R.M. NO: 48157C PANEL: 0320L

REVISED DATE: 04-02-14 ZONE: "X"

NOTES:

ALL EASEMENTS AND BUILDING LINES SHOWN ARE PER THE RECORDED PLAT UNLESS OTHERWISE NOTED.

ALL ROD CAPS ARE STAMPED "L.I.A. 5/00" UNLESS OTHERWISE NOTED.

SUBJECT TO A DRAINAGE EASEMENT 20' ON EACH SIDE OF THE CENTERLINE OF ALL NATURAL DRAINAGE COURSES IN THE ADDITION AS SHOWN ON RECORDED PLAT OF SAID ADDITION.

RESTRICTIVE COVENANTS AND EASEMENTS AS DEFINED PER PLAT NO. 20150079, P.F. & B.O.T.K., F.B.C. FILE NOS. 2001099077, 2001113335, 2002048499, 2002051975, 2003040889, 2004018022, 2004047229, 2005011858, 2005068578, 2006072511, 2008077843, 2008128440, 2008003857, 2008122487, 2008132486, 2009133431, 2009133432, 2010150284, 2011000100, 2011009623, 2011065023, 2011085026, 2011085028, 2011085015, 2011084650, 2011085020, 2011085021, 2011085025, 2011085029, 2011085038, 2011085137, 2011085138, 2011085139, 2011085140, 2011085141, 2011085142, 2011085143, 2011085144, 2011085145, 2011085146, 2011085147, 2011085148, 2011085149, 2011085150, 2011085151, 2011085152, 2011085153, 2011085154, 2011085155, 2011085156, 2011085157, 2011085158, 2011085159, 2011085160, 2011085161, 2011085162, 2011085163, 2011085164, 2011085165, 2011085166, 2011085167, 2011085168, 2011085169, 2011085170, 2011085171, 2011085172, 2011085173, 2011085174, 2011085175, 2011085176, 2011085177, 2011085178, 2011085179, 2011085180, 2011085181, 2011085182, 2011085183, 2011085184, 2011085185, 2011085186, 2011085187, 2011085188, 2011085189, 2011085190, 2011085191, 2011085192, 2011085193, 2011085194, 2011085195, 2011085196, 2011085197, 2011085198, 2011085199, 2011085200, 2011085201, 2011085202, 2011085203, 2011085204, 2011085205, 2011085206, 2011085207, 2011085208, 2011085209, 2011085210, 2011085211, 2011085212, 2011085213, 2011085214, 2011085215, 2011085216, 2011085217, 2011085218, 2011085219, 2011085220, 2011085221, 2011085222, 2011085223, 2011085224, 2011085225, 2011085226, 2011085227, 2011085228, 2011085229, 2011085230, 2011085231, 2011085232, 2011085233, 2011085234, 2011085235, 2011085236, 2011085237, 2011085238, 2011085239, 2011085240, 2011085241, 2011085242, 2011085243, 2011085244, 2011085245, 2011085246, 2011085247, 2011085248, 2011085249, 2011085250, 2011085251, 2011085252, 2011085253, 2011085254, 2011085255, 2011085256, 2011085257, 2011085258, 2011085259, 2011085260, 2011085261, 2011085262, 2011085263, 2011085264, 2011085265, 2011085266, 2011085267, 2011085268, 2011085269, 2011085270, 2011085271, 2011085272, 2011085273, 2011085274, 2011085275, 2011085276, 2011085277, 2011085278, 2011085279, 2011085280, 2011085281, 2011085282, 2011085283, 2011085284, 2011085285, 2011085286, 2011085287, 2011085288, 2011085289, 2011085290, 2011085291, 2011085292, 2011085293, 2011085294, 2011085295, 2011085296, 2011085297, 2011085298, 2011085299, 2011085300, 2011085301, 2011085302, 2011085303, 2011085304, 2011085305, 2011085306, 2011085307, 2011085308, 2011085309, 2011085310, 2011085311, 2011085312, 2011085313, 2011085314, 2011085315, 2011085316, 2011085317, 2011085318, 2011085319, 2011085320, 2011085321, 2011085322, 2011085323, 2011085324, 2011085325, 2011085326, 2011085327, 2011085328, 2011085329, 2011085330, 2011085331, 2011085332, 2011085333, 2011085334, 2011085335, 2011085336, 2011085337, 2011085338, 2011085339, 2011085340, 2011085341, 2011085342, 2011085343, 2011085344, 2011085345, 2011085346, 2011085347, 2011085348, 2011085349, 2011085350, 2011085351, 2011085352, 2011085353, 2011085354, 2011085355, 2011085356, 2011085357, 2011085358, 2011085359, 2011085360, 2011085361, 2011085362, 2011085363, 2011085364, 2011085365, 2011085366, 2011085367, 2011085368, 2011085369, 2011085370, 2011085371, 2011085372, 2011085373, 2011085374, 2011085375, 2011085376, 2011085377, 2011085378, 2011085379, 2011085380, 2011085381, 2011085382, 2011085383, 2011085384, 2011085385, 2011085386, 2011085387, 2011085388, 2011085389, 2011085390, 2011085391, 2011085392, 2011085393, 2011085394, 2011085395, 2011085396, 2011085397, 2011085398, 2011085399, 2011085400, 2011085401, 2011085402, 2011085403, 2011085404, 2011085405, 2011085406, 2011085407, 2011085408, 2011085409, 2011085410, 2011085411, 2011085412, 2011085413, 2011085414, 2011085415, 2011085416, 2011085417, 2011085418, 2011085419, 2011085420, 2011085421, 2011085422, 2011085423, 2011085424, 2011085425, 2011085426, 2011085427, 2011085428, 2011085429, 2011085430, 2011085431, 2011085432, 2011085433, 2011085434, 2011085435, 2011085436, 2011085437, 2011085438, 2011085439, 2011085440, 2011085441, 2011085442, 2011085443, 2011085444, 2011085445, 2011085446, 2011085447, 2011085448, 2011085449, 2011085450, 2011085451, 2011085452, 2011085453, 2011085454, 2011085455, 2011085456, 2011085457, 2011085458, 2011085459, 2011085460, 2011085461, 2011085462, 2011085463, 2011085464, 2011085465, 2011085466, 2011085467, 2011085468, 2011085469, 2011085470, 2011085471, 2011085472, 2011085473, 2011085474, 2011085475, 2011085476, 2011085477, 2011085478, 2011085479, 2011085480, 2011085481, 2011085482, 2011085483, 2011085484, 2011085485, 2011085486, 2011085487, 2011085488, 2011085489, 2011085490, 2011085491, 2011085492, 2011085493, 2011085494, 2011085495, 2011085496, 2011085497, 2011085498, 2011085499, 2011085500, 2011085501, 2011085502, 2011085503, 2011085504, 2011085505, 2011085506, 2011085507, 2011085508, 2011085509, 2011085510, 2011085511, 2011085512, 2011085513, 2011085514, 2011085515, 2011085516, 2011085517, 2011085518, 2011085519, 2011085520, 2011085521, 2011085522, 2011085523, 2011085524, 2011085525, 2011085526, 2011085527, 2011085528, 2011085529, 2011085530, 2011085531, 2011085532, 2011085533, 2011085534, 2011085535, 2011085536, 2011085537, 2011085538, 2011085539, 2011085540, 2011085541, 2011085542, 2011085543, 2011085544, 2011085545, 2011085546, 2011085547, 2011085548, 2011085549, 2011085550, 2011085551, 2011085552, 2011085553, 2011085554, 2011085555, 2011085556, 2011085557, 2011085558, 2011085559, 2011085560, 2011085561, 2011085562, 2011085563, 2011085564, 2011085565, 2011085566, 2011085567, 2011085568, 2011085569, 2011085570, 2011085571, 2011085572, 2011085573, 2011085574, 2011085575, 2011085576, 2011085577, 2011085578, 2011085579, 2011085580, 2011085581, 2011085582, 2011085583, 2011085584, 2011085585, 2011085586, 2011085587, 2011085588, 2011085589, 2011085590, 2011085591, 2011085592, 2011085593, 2011085594, 2011085595, 2011085596, 2011085597, 2011085598, 2011085599, 2011085600, 2011085601, 2011085602, 2011085603, 2011085604, 2011085605, 2011085606, 2011085607, 2011085608, 2011085609, 2011085610, 2011085611, 2011085612, 2011085613, 2011085614, 2011085615, 2011085616, 2011085617, 2011085618, 2011085619, 2011085620, 2011085621, 2011085622, 2011085623, 2011085624, 2011085625, 2011085626, 2011085627, 2011085628, 2011085629, 2011085630, 2011085631, 2011085632, 2011085633, 2011085634, 2011085635, 2011085636, 2011085637, 2011085638, 2011085639, 2011085640, 2011085641, 2011085642, 2011085643, 2011085644, 2011085645, 2011085646, 2011085647, 2011085648, 2011085649, 2011085650, 2011085651, 2011085652, 2011085653, 2011085654, 2011085655, 2011085656, 2011085657, 2011085658, 2011085659, 2011085660, 2011085661, 2011085662, 2011085663, 2011085664, 2011085665, 2011085666, 2011085667, 2011085668, 2011085669, 2011085670, 2011085671, 2011085672, 2011085673, 2011085674, 2011085675, 2011085676, 2011085677, 2011085678, 2011085679, 2011085680, 2011085681, 2011085682, 2011085683, 2011085684, 2011085685, 2011085686, 2011085687, 2011085688, 2011085689, 2011085690, 2011085691, 2011085692, 2011085693, 2011085694, 2011085695, 2011085696, 2011085697, 2011085698, 2011085699, 2011085700, 2011085701, 2011085702, 2011085703, 2011085704, 2011085705, 2011085706, 2011085707, 2011085708, 2011085709, 2011085710, 2011085711, 2011085712, 2011085713, 2011085714, 2011085715, 2011085716, 2011085717, 2011085718, 2011085719, 2011085720, 2011085721, 2011085722, 2011085723, 2011085724, 2011085725, 2011085726, 2011085727, 2011085728, 2011085729, 2011085730, 2011085731, 2011085732, 2011085733, 2011085734, 2011085735, 2011085736, 2011085737, 2011085738, 2011085739, 2011085740, 2011085741, 2011085742, 2011085743, 2011085744, 2011085745, 2011085746, 2011085747, 2011085748, 2011085749, 2011085750, 2011085751, 2011085752, 2011085753, 2011085754, 2011085755, 2011085756, 2011085757, 2011085758, 2011085759, 2011085760, 2011085761, 2011085762, 2011085763, 2011085764, 2011085765, 2011085766, 2011085767, 2011085768, 2011085769, 2011085770, 2011085771, 2011085772, 2011085773, 2011085774, 2011085775, 2011085776, 2011085777, 2011085778, 2011085779, 2011085780, 2011085781, 2011085782, 2011085783, 2011085784, 2011085785, 2011085786, 2011085787, 2011085788, 2011085789, 2011085790, 2011085791, 2011085792, 2011085793, 2011085794, 2011085795, 2011085796, 2011085797, 2011085798, 2011085799, 2011085800, 2011085801, 2011085802, 2011085803, 2011085804, 2011085805, 2011085806, 2011085807, 2011085808, 2011085809, 2011085810, 2011085811, 2011085812, 2011085813, 2011085814, 2011085815, 2011085816, 2011085817, 2011085818, 2011085819, 2011085820, 2011085821, 2011085822, 2011085823, 2011085824, 2011085825, 2011085826, 2011085827, 2011085828, 2011085829, 2011085830, 2011085831, 2011085832, 2011085833, 2011085834, 2011085835, 2011085836, 2011085837, 2011085838, 2011085839, 2011085840, 2011085841, 2011085842, 2011085843, 2011085844, 2011085845, 2011085846, 2011085847, 2011085848, 2011085849, 2011085850, 2011085851, 2011085852, 2011085853, 2011085854, 2011085855, 2011085856, 2011085857, 2011085858, 2011085859, 2011085860, 2011085861, 2011085862, 2011085863, 2011085864, 2011085865, 2011085866, 2011085867, 2011085868, 2011085869, 2011085870, 2011085871, 2011085872, 2011085873, 2011085874, 2011085875, 2011085876, 2011085877, 2011085878, 2011085879, 2011085880, 2011085881, 2011085882, 2011085883, 2011085884, 2011085885, 2011085886, 2011085887, 2011085888, 2011085889, 2011085890, 2011085891, 2011085892, 2011085893, 2011085894, 2011085895, 2011085896, 2011085897, 2011085898, 2011085899, 2011085900, 2011085901, 2011085902, 2011085903, 2011085904, 2011085905, 2011085906, 2011085907, 2011085908, 2011085909, 2011085910, 2011085911, 2011085912, 2011085913, 2011085914, 2011085915, 2011085916, 2011085917, 2011085918, 2011085919, 2011085920, 2011085921, 2011085922, 2011085923, 2011085924, 2011085925, 2011085926, 2011085927, 2011085928, 2011085929, 2011085930, 2011085931, 2011085932, 2011085933, 2011085934, 2011085935, 2011085936, 2011085937, 2011085938, 2011085939, 2011085940, 2011085941, 2011085942, 2011085943, 2011085944, 2011085945, 2011085946, 2011085947, 2011085948, 2011085949, 2011085950, 2011085951, 2011085952, 2011085953, 2011085954, 2011085955, 2011085956, 2011085957, 2011085958, 2011085959, 2011085960, 2011085961, 2011085962, 2011085963, 2011085964, 2011085965, 2011085966, 2011085967, 2011085968, 2011085969, 2011085970, 2011085971, 2011085972, 2011085973, 2011085974, 2011085975, 2011085976, 2011085977, 2011085978, 2011085979, 2011085980, 2011085981, 2011085982, 2011085983, 2011085984, 2011085985, 2011085986, 2011085987, 2011085988, 2011085989, 2011085990, 2011085991, 2011085