

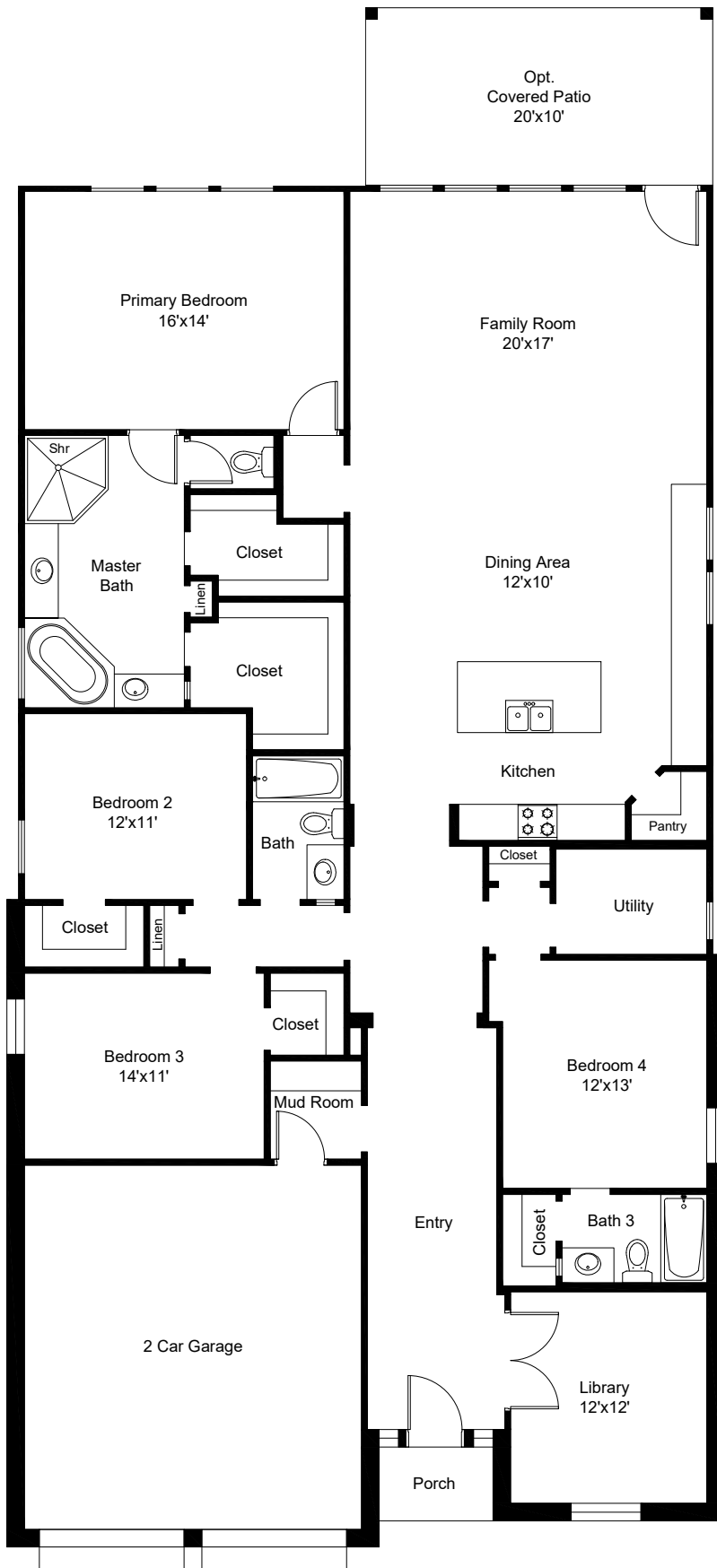
Updates & Features

2906 Rainflower Knoll Lane
Pearland, Texas 77584

Features:

- 4 Bedrooms / 3 Full Bathrooms
- Oversized Corner Lot
- Extended Covered Patio and Front Porch
- Automatic Sprinklers in the front and back
- Grand Entry with 12' Coffered Ceiling
- Open Concept Kitchen and Living
- Natural Light from Beautiful Large Windows
- Island Kitchen with Seating and Walk in Pantry
- Mud Room with Built in Storage
- Primary Bedroom with Two Large Walk In Closets
- Primary Bath has Dual Vanities, Walk in Shower and Soaking Tub
- Complete Guest Suite with Ensuite Bathroom
- Remote Controlled Window Shades in Living Area
- Top Tier Carpet with Waterproof Lining and upgraded pad underneath
- Ample Storage Throughout

Conveniently located to all of the many amenities in Shadow Creek Ranch



FLOOR PLAN

This floor plan including furniture, fixture measurements and dimensions are approximate and for illustrative purposes only. BoxBrownie.com gives no guarantee, warranty or representation as to the accuracy and layout. All enquiries must be directed to the agent, vendor or party representing this floor plan.

2906 Rainflower Knoll Lane, Pearland, Texas 77584

We've asked the sellers a few questions to get to know their community...

2906 Rainflower Knoll Lane Pearland, Texas

How would you describe the area, and what it's like living here?

A nice and very quiet neighborhood. The neighborhood is in a dead end loop, so no extra traffic comes through. The playground is just a short walk down the street and tons of fun! We are on a corner lot so we have no neighbors on one side and it's so quiet, plus the windows on all sides let in tons of light!

What has been your favorite thing about living in this community?

It's been a great location for us! Easy access to the freeway, shopping, and great restaurants. The neighbors are nice and the area is quiet.

What are your favorite places to eat, shop, visit in the neighborhood?

Our favorite places to eat are Killen's Barbeque (famous place for BBQ), Lotus Seafood, Bonchon (Korean food), Poke Xpress, Sambal Chef (Malaysian food). Our favorite place to shop is Pearland Town Center, Costco, H-E-B, Kroger, Target (5-10 min drive). Our favorite places to visit are many great nearby parks and playgrounds, skating center.

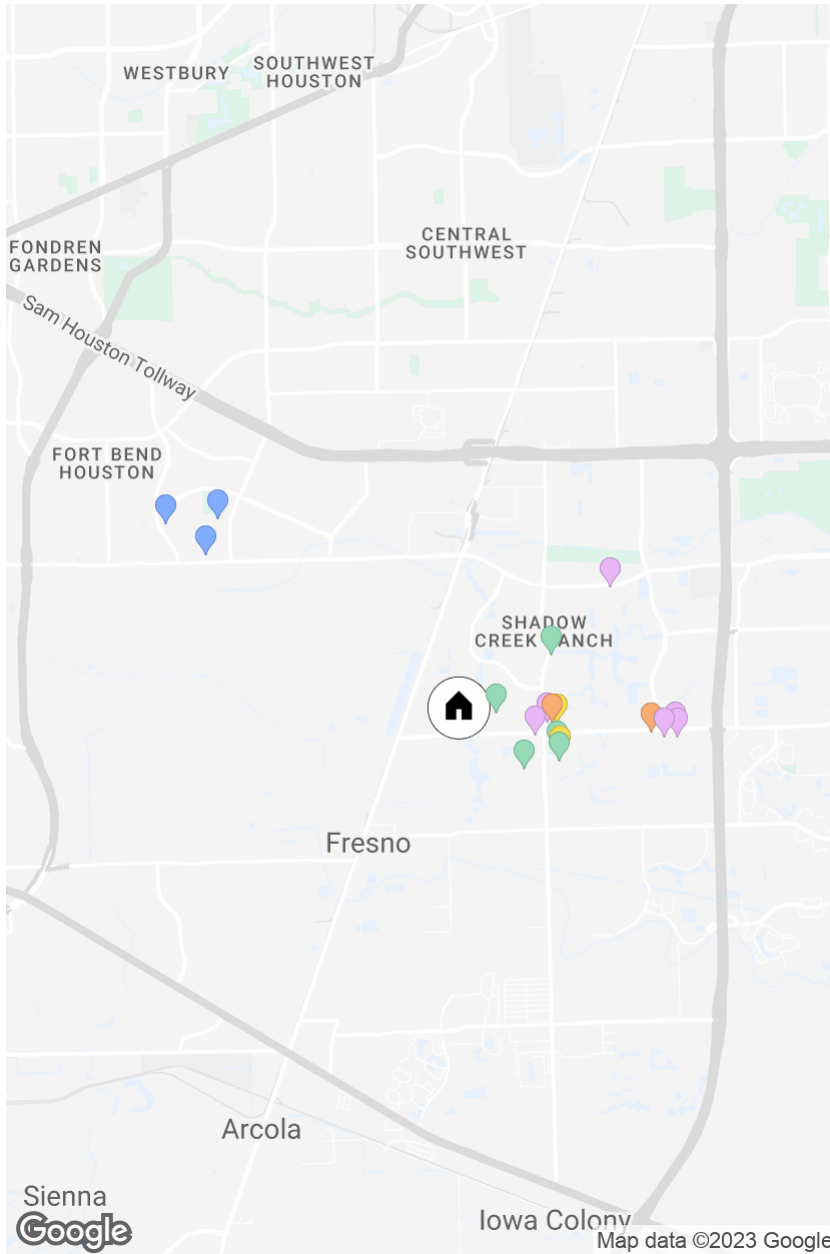
What else can you share with future buyers?

You are going to love this neighborhood for great access to freeway, great restaurants, parks and playgrounds and a quiet and safe neighborhood.

2906 Rainflower Knoll Lane

Shadow Creek Ranch

4 BD 3 BA 2529 SF



GROCERY STORES

- Walmart Neighborhood Market, 0.97mi
- ALDI, 1.99mi

RESTAURANTS

- Marco's Pizza, 0.83mi
- Tang's Kitchen, 0.91mi
- Pepperoni's - Pearland, 0.91mi
- Jax Burgers Fries & Shakes, 1.99mi
- Gringo's Mexican Kitchen {Shadow Creek}, 2.13mi
- Pei Wei Asian Kitchen, 2.24mi
- Red Robin Gourmet Burgers and Brews, 2.27mi

PARKS

- Biscayne Bay Recreation Center, 0.38mi
- Southern Oaks Landing Park, 0.91mi
- Kingsley Practice Field, 1.09mi
- Pepper Creek Park, 1.10mi
- Heritage Park, 1.16mi

GYMS

- Anytime Fitness, 1.01mi
- Open Street Workout, 1.14mi

SCHOOLS

- Blue Ridge Elementary School, 3.05mi
- Christa McAuliffe Middle School, 3.17mi
- Willowridge High School, 3.57mi



Tiffany Bean

REALTOR®
M: 971.344.2452
tiffany.bean@compass.com

Compass is a licensed real estate broker. All material is intended for informational purposes only and is compiled from sources deemed reliable but is subject to errors, omissions, changes in price, condition, sale, or withdrawal without notice. No statement is made as to the accuracy of any description or measurements (including square footage). This is not intended to solicit property already listed. No financial or legal advice provided. Equal Housing Opportunity. Photos may be virtually staged or digitally enhanced and may not reflect actual property conditions.

WHITE OAK
REALTY GROUP

COMPASS