



Exclusively Marketed by  
**KATIE WOODROOF**  
REALTOR®  
713.461.6800  
katie.woodroof@garygreene.com  
garygreene.com

**9219**  
**HILDALE**  

---

**S T R E E T**  

---

**SPRING VALLEY VILLAGE**



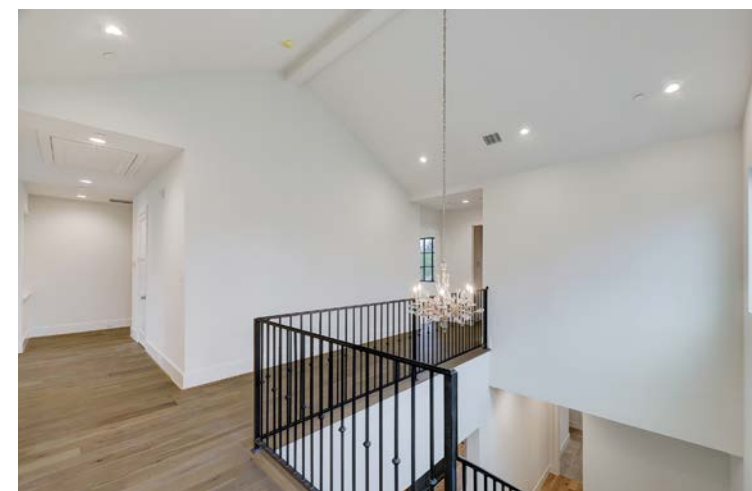
WELCOME TO

# 9219

## HILDALE

---

S T R E E T



Beautiful new construction in Spring Valley Village built by Loyd Russel Homes and designed by renowned Todd Rice. Zoned to Valley Oaks, Spring Branch Middle School and Memorial High School. Impeccably designed floor plan to be completed with top tier finishes and appliances. The first floor primary bedroom features vaulted ceilings and abundant natural light with outdoor access leading to an impressive loggia overlooking ample backyard space ideal for a pool. Three additional bedrooms upstairs, each with ensuite bathrooms and walk-in closets. Centrally located game room upstairs plus a generously sized bonus room perfect for a home gym, additional play area, media room, craft/homework room, etc.

FLOORPLAN



Approx. Living Area	
First Floor	2,567 sq. ft.
Second Floor	2,499 sq. ft.
<b>Total</b>	<b>5,066 sq. ft.</b>

Perimeter 52'-8" x 104'-6"  
Job No. 10607

Please note this floor plan is for marketing purposes and should be used as a guide only.





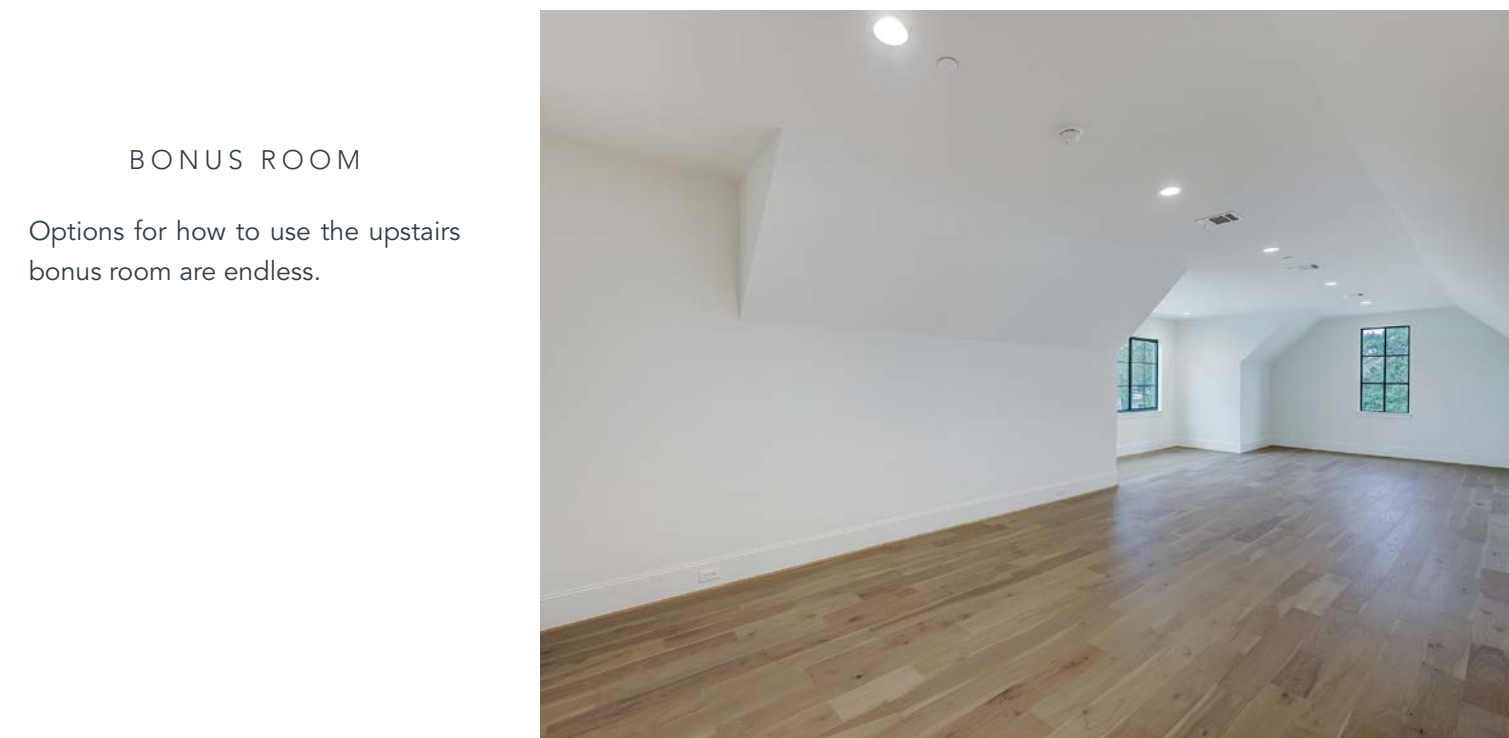
### SECONDARY BEDROOM

One of three upstairs secondary bedrooms each with walk-in closets and en-suite bathrooms



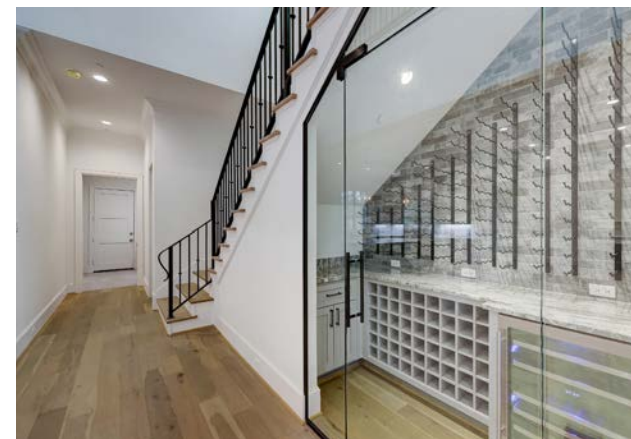
### FAMILY ROOM | WET BAR

Family room offers abundant natural light. The wet bar overlooks the outdoor veranda and features a sink and an under counter beverage refrigerator. The glassed in wine room includes wine racks and under counter storage, along with a wine refrigerator.



### BONUS ROOM

Options for how to use the upstairs bonus room are endless.







### KITCHEN | PANTRY

Showstopping kitchen complete with large island, GE Monogram built-in side by side refrigerator and GE Monogram 48" gas range. The open concept is ideal for entertaining. The Large window overlooks the front yard and driveway.

The walk-in pantry is lined with cabinetry and shelves, it also includes a built-in microwave and additional space with hookups for a secondary 36" refrigerator.



### PRIMARY BEDROOM

Primary suite offers cathedral ceilings and gorgeous windows. Spacious primary closet with loads of built-ins and hanging space. Dreamy primary bath with freestanding tub, standalone glass shower and dual vanities under cathedral ceilings.

