

FEMA Flood Map Service Center: Search By Address

Enter an address, place, or coordinates: 

Navigation

Search

[MSC Home \(/portal/\)](#)

[MSC Search by Address \(/portal/search\)](#)

[MSC Search All Products \(/portal/advanceSearch\)](#)

▼ [MSC Products and Tools \(/portal/resources/productsandtools\)](#)

[Hazus \(/portal/resources/hazus\)](#)

[LOMC Batch Files \(/portal/resources/lomc\)](#)

[Product Availability \(/portal/productAvailability\)](#)

[MSC Frequently Asked Questions \(FAQs\) \(/portal/resources/faq\)](#)

[MSC Email Subscriptions \(/portal/subscriptionHome\)](#)


[Contact MSC Help \(/portal/resources/contact\)](#)

Whether you are in a high risk zone or not, you may need [flood insurance \(https://www.fema.gov/national-flood-insurance-program\)](https://www.fema.gov/national-flood-insurance-program), because most homeowners insurance doesn't cover flood damage. If you live in an area with low or moderate flood risk, you are 5 times more likely to experience flood than a fire in your home over the next 30 years. For many, a National Flood Insurance Program's flood insurance policy could cost less than \$400 per year. Call your insurance agent today and protect what you've built.

Learn more about [steps you can take \(https://www.fema.gov/what-mitigation\)](https://www.fema.gov/what-mitigation) to reduce flood risk damage.

Search Results—Products for HOUSTON, CITY OF

Show ALL Products » (<https://msc.fema.gov/portal/availabilitySearch?addcommunity=480296&communityName=HOUSTON, CITY OF>)

The flood map for the selected area is number **48201C0665M**, effective on **06/09/2014** 

DYNAMIC MAP



PRINT MAP/
FIRMette

MAP IMAGE



[_ \(https://msc.fema.gov/portal/downloadProduct?](https://msc.fema.gov/portal/downloadProduct?productTypeID=FINAL_PRODUCT&productSubTypeID=FIRM_PANEL&productID=48201C0665M)

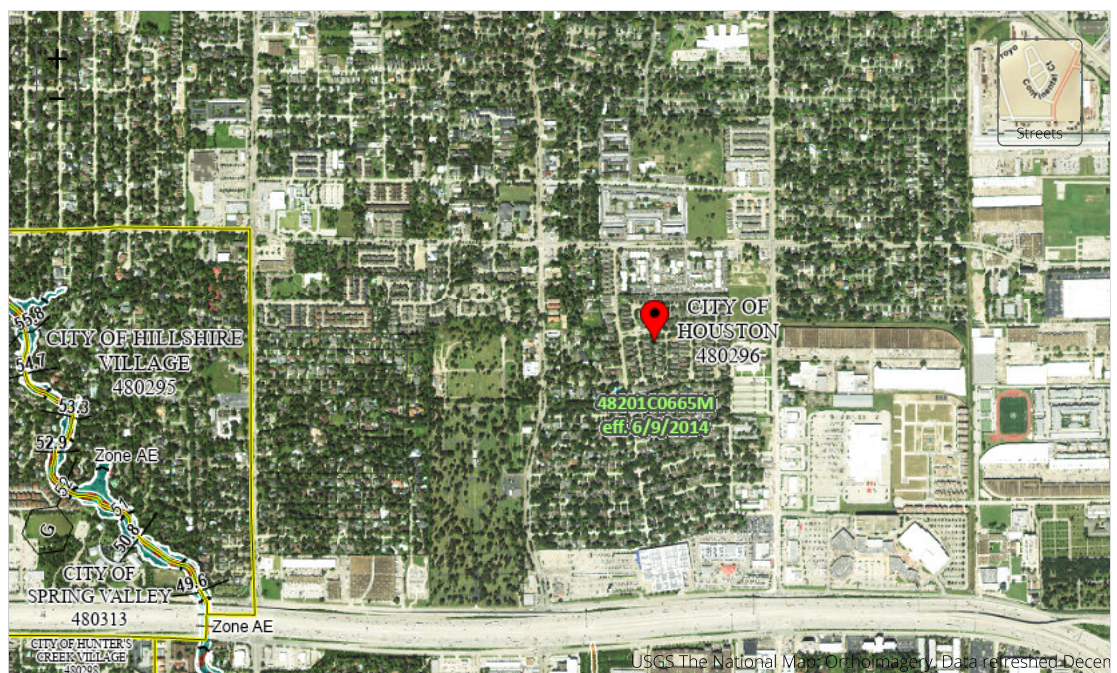
[productTypeID=FINAL_PRODUCT&productSubTypeID=FIRM_PANEL&productID=48201C0665M\)](https://msc.fema.gov/portal/downloadProduct?productTypeID=FINAL_PRODUCT&productSubTypeID=FIRM_PANEL&productID=48201C0665M)

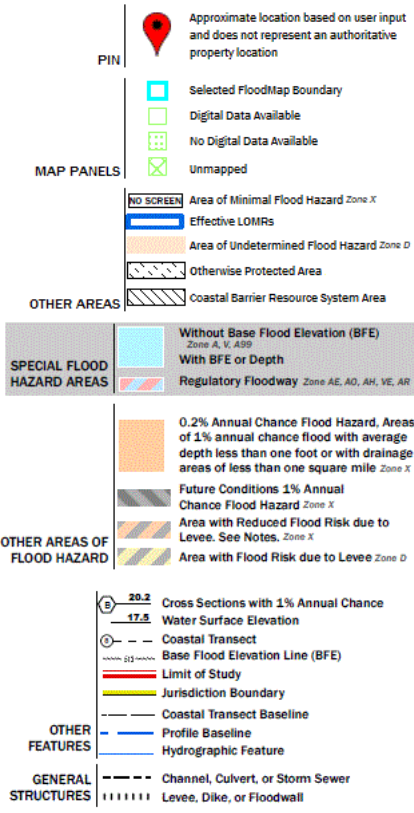
Changes to this FIRM

- Revisions (2)
- Amendments (9)
- Revalidations (3)

You can choose a new flood map or move the location pin by selecting a different location on the locator map below or by entering a new location in the search field above. It may take a minute or more during peak hours to generate a dynamic FIRMette.

Go To NFHL Viewer » (<https://hazards-fema.maps.arcgis.com/apps/webappviewer/index.html?id=8b0adb51996444d4879338b55>)





Share This Page.

[Home](http://www.fema.gov/) ([//www.fema.gov/](http://www.fema.gov/)) [Download Plug-ins](http://www.fema.gov/download-plug-ins) ([//www.fema.gov/download-plug-ins](http://www.fema.gov/download-plug-ins)) [About Us](#) ([//www.fema.gov/about-agency](http://www.fema.gov/about-agency)) [Privacy Policy](http://www.fema.gov/privacy-policy) ([//www.fema.gov/privacy-policy](http://www.fema.gov/privacy-policy)) [FOIA](http://www.fema.gov/foia) ([//www.fema.gov/foia](http://www.fema.gov/foia)) [Office of the Inspector General](http://www.oig.dhs.gov/) ([//www.oig.dhs.gov/](http://www.oig.dhs.gov/)) [Strategic Plan](http://www.fema.gov/fema-strategic-plan) ([//www.fema.gov/fema-strategic-plan](http://www.fema.gov/fema-strategic-plan)) [Whitehouse.gov](http://www.whitehouse.gov/) ([//www.whitehouse.gov](http://www.whitehouse.gov/)) [DHS.gov](http://www.dhs.gov/) ([//www.dhs.gov](http://www.dhs.gov/)) [Ready.gov](http://www.ready.gov/) ([//www.ready.gov](http://www.ready.gov/)) [USA.gov](http://www.usa.gov/) ([//www.usa.gov](http://www.usa.gov/)) [DisasterAssistance.gov](http://www.disasterassistance.gov/) ([//www.disasterassistance.gov/](http://www.disasterassistance.gov/))



<https://www.oig.dhs.gov/hotline>

Official website of the Department of Homeland Security