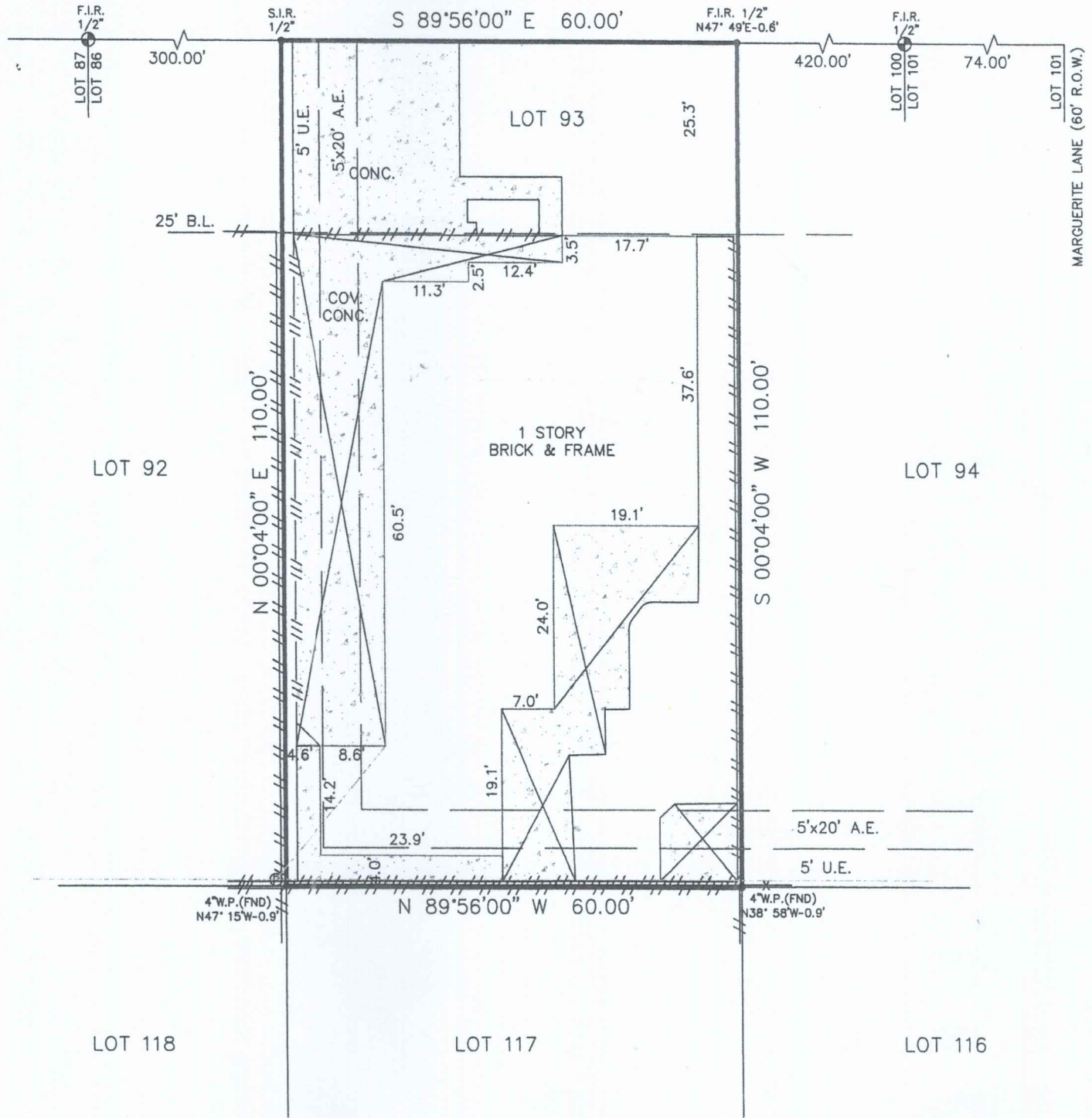
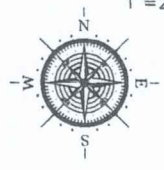


- ...IAL EASEMENT
- ...UILDING LINE
- ...EARS
- ...CLERK'S FILE NUMBER
- ...RAINAGE EASEMENT
- ...LECTRIC EASEMENT
- ...OUND IRON PIPE
- ...OUND IRON ROD
- ...OUND
- M.P. = METAL POST
- M.U.E. = MUNICIPAL UTILITY EASEMENT
- P.A.E. = PERMANENT ACCESS EASEMENT
- P.C. = POINT OF CURVATURE
- P.C.C. = POINT OF COMPOUND CURVATURE
- P.E. = POOL EQUIPMENT
- P.O.C. = POINT OF COMMENCING
- P.O.B. = POINT OF BEGINNING
- P.P. = POWER POLE
- F.I. = POINT OF INTERSECTION
- P.U.E. = PUBLIC UTILITY EASEMENT
- S.I.R. = SET IRON ROD
- S.S.E. = SANITARY SEWER EASEMENT
- STM.S.E. = STORM SEWER EASEMENT
- U.T.S. = UNABLE TO SET
- U.E. = UTILITY EASEMENT
- W.L.E. = WATER LINE EASEMENT
- W.P. = WOODEN POST
- W.S.E. = WATER & SEWER EASEMENT

- ✓ = NOT TO SCALE
- = CONTROL MONUMENT
- = PROPERTY CORNER
- = PROPERTY LINE
- = EASEMENT LINE
- = BUILDING SETBACK LINE
- = BUILDING WALL
- = WOODEN FENCE
- = CHAIN LINK FENCE
- = METAL FENCE
- = WROUGHT FENCE
- = VINYL FENCE
- = OVERHEAD ELECTRIC POWER LINE

1802 EAST MARTHA LANE
(60' R.O.W.)

SCALE
1" = 20'



Reviewed & Accepted by: Maria S. de Leon Date 8-2-2022

LEGAL DESCRIPTION
LOT NO. NINETY-THREE (93), OF STADIUM ESTATES, SECTION TWO (2), AN ADDITION IN

NOTES:
- BEARING BASIS: PLAT
- SUBJECT TO ANY AND ALL RECORDED AND