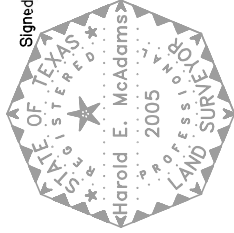


**NOTES:**

- Coordinates, bearings, distances and areas surveyed hereon are Grid NAD 83 (1993), Texas Central Zone as determined by Global Positioning System (GPS) with NGS OPUS post processing. Distances hereon may be converted to Geodetic Horizontal (surface) by dividing by a Combined Scale Factor of 0.99988.
- Plastic caps referenced hereon are 1-3/4" diameter, yellow in color and stamped "H.E. McAdams, R.P.L.S. No. 2005". Aluminum discs referenced hereon are 1-1/4" diameter and stamped "H.E. McAdams, RPLS 2005".
- Aluminum discs referenced hereon are 1-1/4" diameter and stamped "H.E. McAdams, RPLS 2005".
- This property is partially within Zone A, "areas determined to be within the 0.1% annual chance floodplain" (Special Flood Hazard Area) without Base Flood Elevation (BFE) determined according to F.E.M.A. Flood Insurance Rate Map, Community-Panel No. 481042 0450D and Map No. 481042 0450D dated August 16, 2011.
- Special Flood Hazard Line (SFHL) shown hereon was scaled from FEMA Flood Insurance Rate Map Community-Panel No. 481042 0450D, neither H.E. McAdams, Inc. nor H.E. McAdams intends to state or imply that flooding will or will not occur in Zones 'A' or 'X' shown hereon.
- This survey was completed without an Abstract of Title. There may be easements and other matters not shown.

I, Harold E. McAdams, do hereby state that this plat represents a survey made on the ground and that all corners and monuments are as shown hereon.

Signed *H. E. McAdams*  
 Harold E. McAdams  
 Registered Professional  
 Land Surveyor No. 2005  
 April 22, 2022



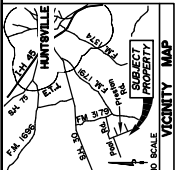
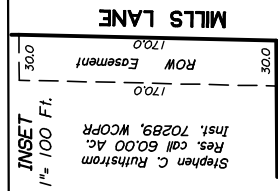
Tony E. Doughtie  
 Call 195.21 ac.  
 V. 870, p. 560, WCOPR

**STEPHEN C. RUTHSTROM**  
**48.78 ACRE TRACT**  
**J.A. MCGARY SURVEY, A-369**  
**WALKER COUNTY, TEXAS**

APRIL 2022

SCALE: 1" = 300 FEET  
 H.E. McADAMS & SON SURVEYING, INC.  
 Registered Professional Land Surveyors  
 P.O. Box 5047, Huntsville, Texas 77342  
 TBPELS Firm No. 10194425

22032 A1f EX



Westmark Properties, LLC  
 Call 36.71 ac. Inst. 63325, WCOPR

Wink to Webster Pipeline, LLC  
 Call 0.007 Ac. Easement  
 Inst. No. 49790, WCOPR

**LOT 1**  
**23.78 AC.**

**Stephen C. Ruthstrom**  
 Res. call 60.00 Ac.  
 Inst. 70289, WCOPR

**LOT 2**  
**25.00 AC.**

Larry J. Mills  
 Call 105.00 ac. V. 319, p. 688, WCOPR

Timothy Aaron O'Neal  
 Call 11.2026 ac.  
 Inst. 75544, WCOPR

Larry J. Mills  
 ROW Easement  
 V. 417, p. 479, WCOPR  
 See INSET

Point for cor. in rd.  
 Set 5/8" I. rod with  
 S 86°42'46"W 2383.76  
 E= 3,735,371.99 Ft.

Set 1/2" I. rod  
 N= 10,215,822.89 Ft.  
 E= 3,735,360.91 Ft.

Set PK Nail with aluminum  
 disc at west edge asphalt rd.  
 S 87°40'42"W 913.81  
 S 87°40'42"W 65.7'

Set 5/8" I. rod  
 with plastic cap

Set 5/8" I. rod  
 with plastic cap

Set 5/8" I. rod  
 with plastic cap

Set 5/8" I. rod  
 with plastic cap

Set 5/8" I. rod  
 with plastic cap

Set 5/8" I. rod  
 with plastic cap

Find 1/2" I. rod with  
 plastic cap stamped  
 6132" Survey RPLS

Find 1/2" I. rod with  
 plastic cap stamped  
 6132" Survey RPLS

Robert Earl Autery  
 Res. call 106.48 ac. V. 148, p. 873, WCOPR

Charles Thompson  
 Call 45.03 ac.  
 V. 828, p. 159, WCOPR

S 01°38'46"E 791.69

Find 5/8" I. rod

Find 5/8" I. rod

Find 5/8" I. rod

Find 5/8" I. rod

Find 5/8" I. rod

Find 5/8" I. rod

Find 5/8" I. rod

Find 5/8" I. rod

Find 5/8" I. rod

Find 5/8" I. rod

Find 5/8" I. rod

Find 5/8" I. rod

Find 5/8" I. rod

Find 5/8" I. rod

Find 5/8" I. rod

Find 5/8" I. rod

Find 5/8" I. rod

Find 5/8" I. rod

Find 5/8" I. rod

Find 5/8" I. rod

Find 5/8" I. rod

Find 5/8" I. rod

Find 5/8" I. rod

Find 5/8" I. rod

Find 5/8" I. rod

Find 5/8" I. rod

Find 5/8" I. rod

Find 5/8" I. rod

Find 5/8" I. rod

Find 5/8" I. rod

Find 5/8" I. rod

Find 5/8" I. rod

Find 5/8" I. rod

Find 5/8" I. rod

Find 5/8" I. rod

Find 5/8" I. rod

Find 5/8" I. rod

Find 5/8" I. rod

Find 5/8" I. rod

Find 5/8" I. rod

Find 5/8" I. rod

Find 5/8" I. rod

Find 5/8" I. rod

Find 5/8" I. rod

Find 5/8" I. rod

Find 5/8" I. rod

Find 5/8" I. rod

Find 5/8" I. rod

Find 5/8" I. rod

Find 5/8" I. rod

Find 5/8" I. rod

Find 5/8" I. rod

Find 5/8" I. rod

Find 5/8" I. rod

Find 5/8" I. rod

Find 5/8" I. rod

Find 5/8" I. rod

Find 5/8" I. rod

Find 5/8" I. rod

Find 5/8" I. rod

Find 5/8" I. rod

Find 5/8" I. rod

Find 5/8" I. rod

Find 5/8" I. rod

Find 5/8" I. rod

Find 5/8" I. rod

Find 5/8" I. rod

Find 5/8" I. rod

Find 5/8" I. rod

Find 5/8" I. rod

Find 5/8" I. rod

Find 5/8" I. rod

Find 5/8" I. rod

Find 5/8" I. rod

Find 5/8" I. rod

Find 5/8" I. rod

Find 5/8" I. rod

Find 5/8" I. rod

Find 5/8" I. rod

Find 5/8" I. rod

Find 5/8" I. rod

Find 5/8" I. rod

Find 5/8" I. rod

Find 5/8" I. rod

Find 5/8" I. rod

Find 5/8" I. rod

Find 5/8" I. rod

Find 5/8" I. rod

Find 5/8" I. rod

Find 5/8" I. rod

Find 5/8" I. rod

Find 5/8" I. rod

Find 5/8" I. rod

Find 5/8" I. rod

Find 5/8" I. rod

Find 5/8" I. rod

Find 5/8" I. rod

Find 5/8" I. rod

Find 5/8" I. rod

Find 5/8" I. rod

Find 5/8" I. rod

Find 5/8" I. rod

Find 5/8" I. rod

Find 5/8" I. rod

Find 5/8" I. rod

Find 5/8" I. rod

Find 5/8" I. rod

Find 5/8" I. rod

Find 5/8" I. rod

Find 5/8" I. rod

Find 5/8" I. rod

Find 5/8" I. rod

Find 5/8" I. rod

Find 5/8" I. rod

Find 5/8" I. rod

Find 5/8" I. rod

Find 5/8" I. rod

Find 5/8" I. rod

Find 5/8" I. rod

Find 5/8" I. rod

Find 5/8" I. rod

Find 5/8" I. rod

Find 5/8" I. rod

Find 5/8" I. rod

Find 5/8" I. rod

Find 5/8" I. rod

Find 5/8" I. rod

Find 5/8" I. rod

Find 5/8" I. rod

Find 5/8" I. rod

Find 5/8" I. rod

Find 5/8" I. rod

Find 5/8" I. rod

Find 5/8" I. rod

Find 5/8" I. rod

Find 5/8" I. rod

Find 5/8" I. rod

Find 5/8" I. rod

Find 5/8" I. rod

Find 5/8" I. rod

Find 5/8" I. rod

Find 5/8" I. rod

Find 5/8" I. rod

Find 5/8" I. rod

Find 5/8" I. rod

Find 5/8" I. rod

Find 5/8" I. rod

Find 5/8" I. rod

Find 5/8" I. rod

Find 5/8" I. rod

Find 5/8" I. rod

Find 5/8" I. rod

Find 5/8" I. rod

Find 5/8" I. rod

Find 5/8" I. rod

Find 5/8" I. rod

Find 5/8" I. rod

Find 5/8" I. rod

Find 5/8" I. rod

Find 5/8" I. rod

Find 5/8" I. rod

Find 5/8" I. rod

Find 5/8" I. rod

Find 5/8" I. rod

Find 5/8" I. rod

Find 5/8" I. rod

Find 5/8" I. rod

Find 5/8" I. rod

Find 5/8" I. rod

Find 5/8" I. rod

Find 5/8" I. rod

Find 5/8" I. rod

Find 5/8" I. rod

Find 5/8" I. rod

Find 5/8" I. rod

Find 5/8" I. rod

Find 5/8" I. rod

Find 5/8" I. rod

Find 5/8" I. rod

Find 5/8" I. rod

Find 5/8" I. rod

Find 5/8" I. rod

Find 5/8" I. rod

Find 5/8" I. rod

Find 5/8" I. rod

Find 5/8" I. rod

Find 5/8" I. rod

Find 5/8" I. rod

Find 5/8" I. rod

Find 5/8" I. rod

Find 5/8" I. rod

Find 5/8" I. rod

Find 5/8" I. rod