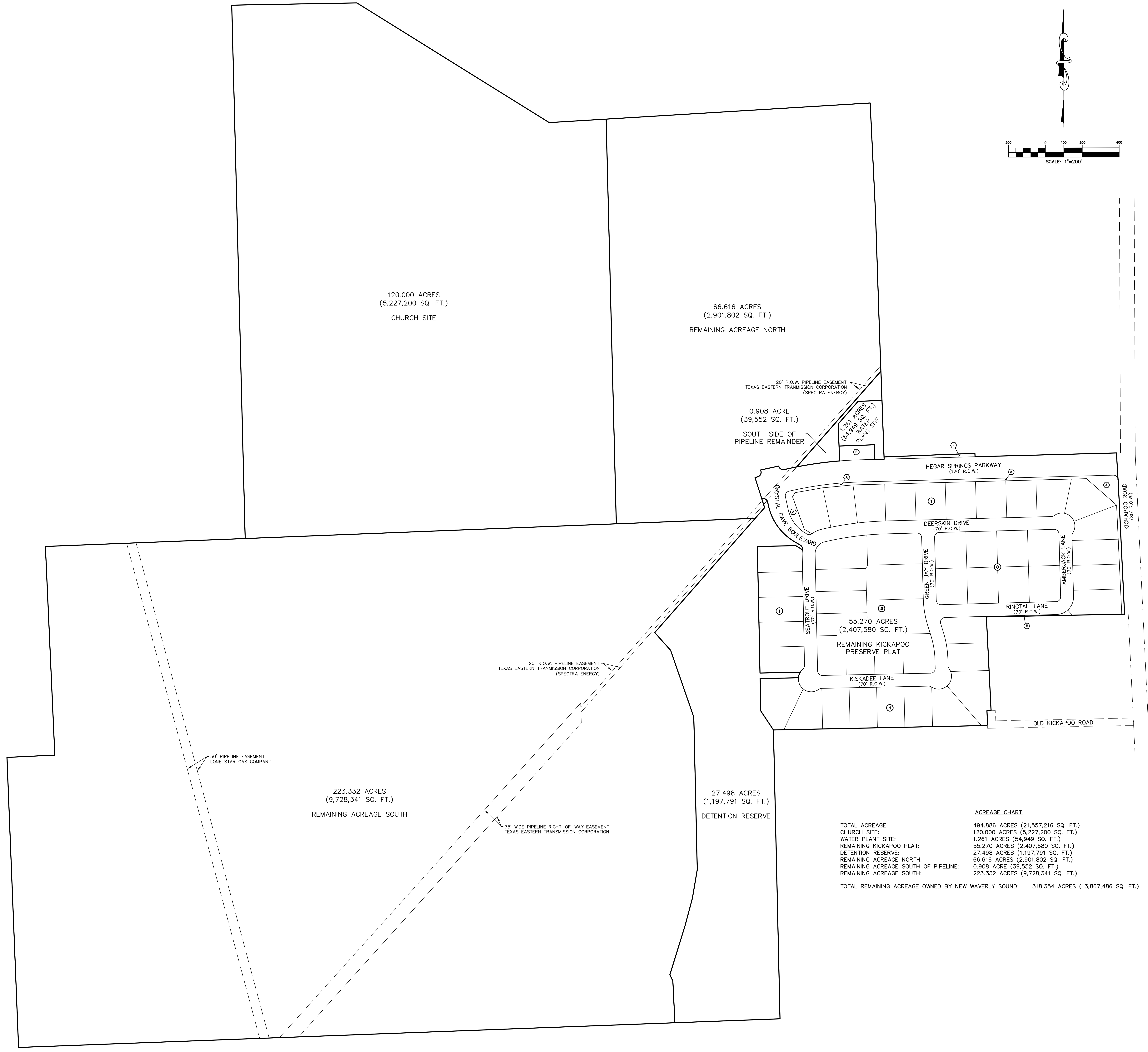
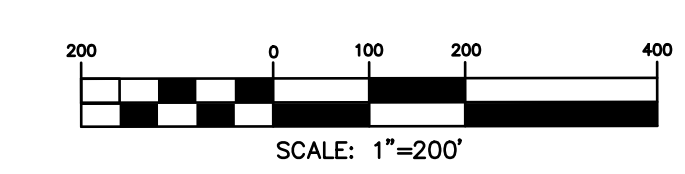


KEY MAP 243T  
SCALE 1" = 3000'



**ACREAGE CHART**

TOTAL ACREAGE:	494.886 ACRES (21,557,216 SQ. FT.)
CHURCH SITE:	120.000 ACRES (5,227,200 SQ. FT.)
WATER PLANT SITE:	1.261 ACRES (54,949 SQ. FT.)
REMAINING KICKAPOO PLAT:	55.270 ACRES (2,407,580 SQ. FT.)
DETENTION RESERVE:	27.498 ACRES (1,197,791 SQ. FT.)
REMAINING ACREAGE NORTH:	66.616 ACRES (2,901,802 SQ. FT.)
REMAINING ACREAGE SOUTH OF PIPELINE:	0.908 ACRES (39,552 SQ. FT.)
REMAINING ACREAGE SOUTH:	223.332 ACRES (9,728,341 SQ. FT.)
<b>TOTAL REMAINING ACREAGE OWNED BY NEW WAVERLY SOUND:</b>	<b>318.354 ACRES (13,867,486 SQ. FT.)</b>

NEW WAVERLY SOUND  
INVESTMENT, LLC  
ACREAGE EXHIBIT  
FOR KICKAPOO PRESERVE



21020 PARK ROW  
KATY, TEXAS 77449  
PHONE: (281) 599-8288  
FAX: (281) 492-0299