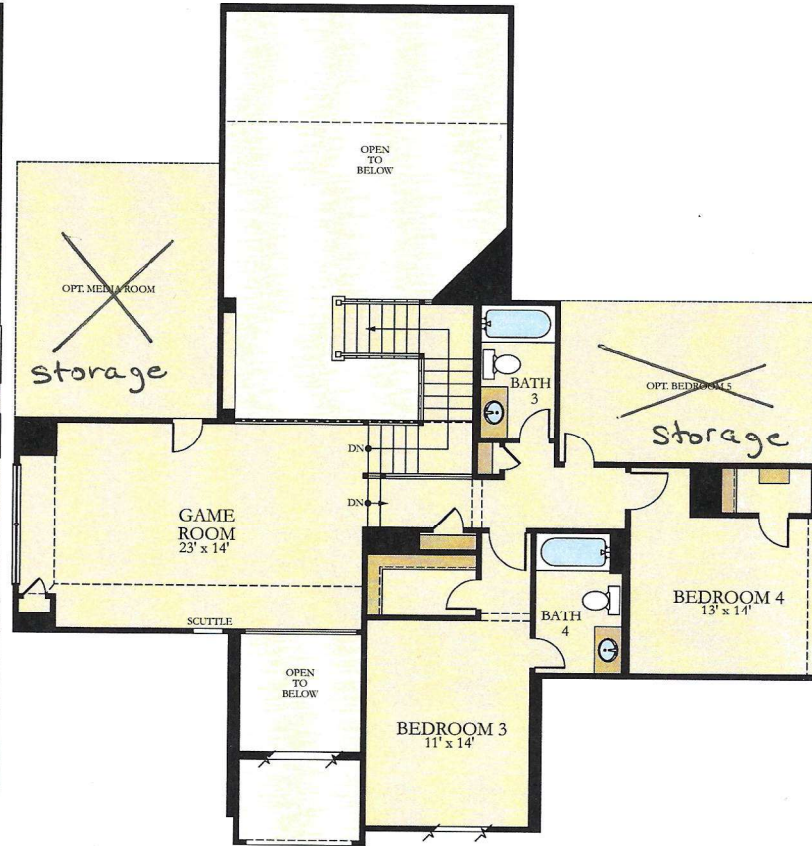
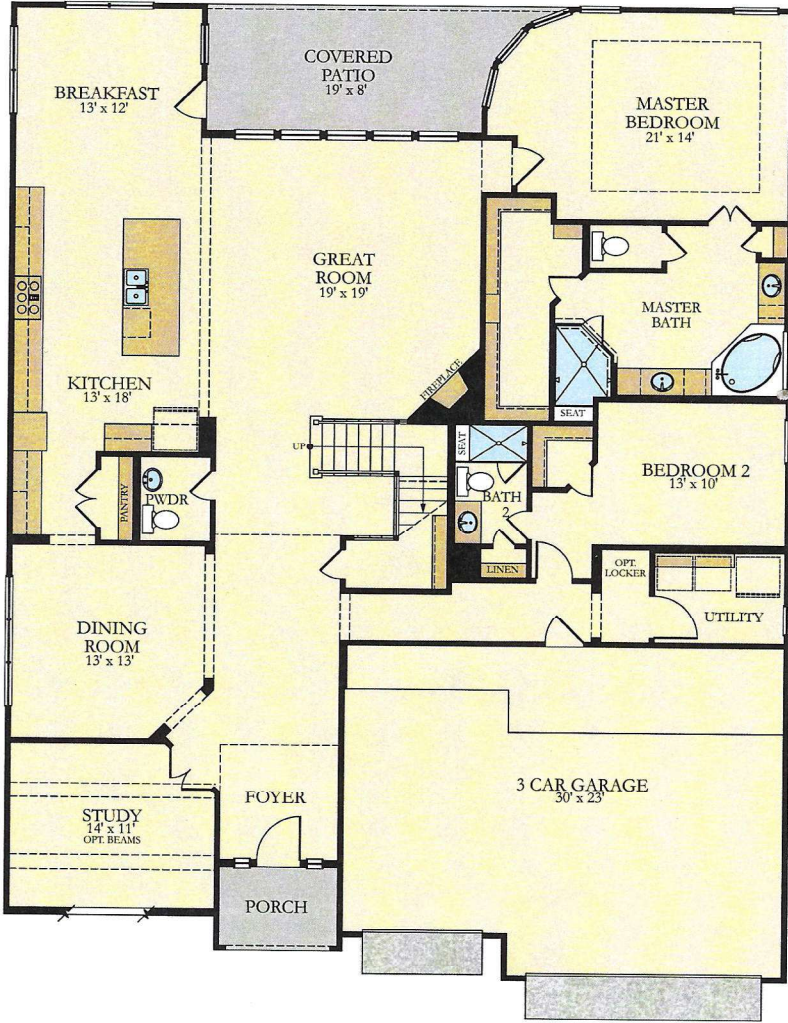


*New Haven II* THE WENTWORTH COLLECTION

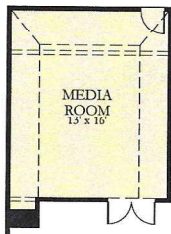
3,772 SQ. FT. | 4 BEDROOMS | 4.5 BATHS | 3 CAR GARAGE

FIRST FLOOR

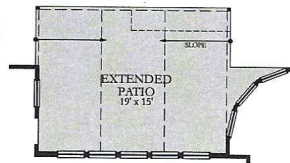
SECOND FLOOR



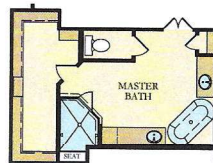
OPTIONS



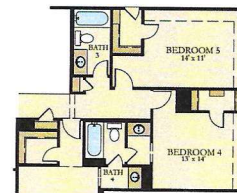
Opt. Media Room



Opt. Extended Patio



Opt. Free Standing Tub



Opt. Bedroom 5

VILLAGEBUILDERS.COM







## Luxury Included Features THE WENTWORTH COLLECTION

### INSIDE YOUR NEW VILLAGE BUILDERS® HOME:

- 18" Designer tile throughout first floor living spaces, kitchen and utility room
- Nickel door hardware
- Performance carpet with Stainguard and 1/2" nominal pad
- 6 1/4" baseboards throughout home
- 42" modern direct-vent fireplace with remote control
- Ceiling fan with light kit in bedrooms, great room, study and game rooms
- Energy efficient LED lighting throughout home and garage
- 8' raised panel interior doors on first floor
- Etched-glass French doors at Study
- Iron stair balusters and stained starter step
- Security system with motion detector, 2 keypads and sensors on first floor windows and exterior doors
- Floor plug in the great room and study

### EXTERIOR KEY FEATURES:

- Moisture-resistant fiber-cement siding
- Landscaping package with full front and back sod and automatic irrigation system
- Full gutters
- 8' Designer front door & full lite patio door
- Bricked front porch
- 30-Year high quality dimensional shingles
- Designer coach lamps on front elevation
- Covered concrete patio with gas connection
- Hose bibbs at front and rear of home
- Two-tone exterior Designer paint package
- Insulated garage door with decorative hardware, automatic opener, and 2 remotes

### THE KITCHEN OF YOUR DREAMS INCLUDES:

- Built-in Frigidaire® energy-efficient stainless steel appliances
  - 36" 5-burner gas continuous grate cooktop
  - 30" self-cleaning double oven with convection feature
  - Quiet dishwasher with Orbit Clean® technology
  - Built-in microwave with soft touch panel
- 42" J-Kraft frameless cabinets with included Designer hardware
- Subway style backsplash with numerous design choices

- Premier wood vent hood cabinet
- Designer selection of solid surface countertops
- Spacious, single bowl stainless steel undermount sink
- Contemporary Moen® chrome pullout faucet
- Pendant lighting at island
- Under cabinet lighting
- Spacious walk-in pantry, on select designs
- Cityscape cabinet design
- Cookie sheet cabinet with built in storage
- Built-in spice racks
- Extra large drawers for pot storage

✓ MAP

✓ CIP

### GOURMET KITCHENS IN SELECT DESIGNS ALSO INCLUDE:

- Glass door china tower
- An appliance garage to keep your countertops clean

### LUXURIOUS OWNERS BATH:

- 18" Floor to ceiling Designer tile on floor and shower walls, tub skirt, and tile surround
- Recessed shower with mesh tile flooring
- Oval garden tub
- Semi-Frameless glass shower enclosure
- Opaque window at tub, on select designs
- J-Kraft frameless vanity cabinets with included hardware
- Quartz countertops with rectangular under mount sink
- Contemporary Moen® chrome faucets and rain shower head with matching bath accessories
- Elongated commode with slow-close seat
- Spacious, climate controlled walk-in owners closet with shelving

### SECONDARY BATHS:

- 18" Floor to ceiling designer tile on floor and shower walls
- Recessed showers with mesh tile flooring, on first floor en-suite bathrooms
- J-Kraft frameless vanity cabinets with included hardware
- Quartz countertops with rectangular under mount sinks
- Contemporary Moen® chrome faucets and rain shower head with matching bath accessories
- Elongated commode with slow-close seat





## Luxury Included Features THE WENTWORTH COLLECTION

### POWDER ROOM

- 18" Designer tile flooring
- Pedestal sink
- Contemporary Moen® chrome faucet and accessories
- Elongated commode with slow-close seat
- Decorative framed mirror

### PREMIER HOUSTON DESIGN STUDIO:

- Complimentary three-hour consultation with a professional designer at The Design Studio, for pre-construction customers
- Unlimited time to get inspired at The Design Studio during business hours
- For customer purchasing an inventory home, enjoy hand-selected finishes by a professional Village Builders® designer

### YOUR LAUNDRY ROOM INCLUDES:

- 18" Designer tile flooring
- J-Kraft frameless cabinets with included hardware
- Electric and gas dryer connections
- Freezer space on select designs

### ENERGY EFFICIENT FEATURES:

- Energy Star ratings performed to the Environmental Protection Agency's ENERGY STAR® guidelines
- Programmable Honeywell® W I-Fi thermostat with humidity control
- Lennox® 16-SEER air conditioning system
- Radiant barrier roof decking
- High-performance, insulated multi-layer vinyl windows
- Tilt-out sash on all operable windows
- The Village Builders® Comfort Advantage System:
  - Honeywell® Whole-home dehumidification system
  - Honeywell® T10 Pro Smart W I-Fi Thermostat
  - Advanced media air cleaner for optimally clean air

✓ MAP

### QUALITY CONSTRUCTION:

- 3,000-PSI, post-tension foundation certified by an Independent Engineer
- Rigorous inspection process conducted at all critical stages of construction
- Quality assurance inspection prior to New Home Orientation
- Personal New Home Orientation and delivery by Village Builders® Construction Manager and/or Customer Care Representative

✓ CJP

\* Features, amenities, floor plans, elevations, and designs vary and are subject to changes or substitution without notice. Items shown are artist's renderings and may contain options that are not standard on all models or not included in the purchase price. Availability may vary. See a Village Builders New Home Consultant for More Information. Copyright © 2020 Lennar Corporation. Village Builders and the Village Builders logo are U.S. registered service marks or service marks of Lennar Corporation and/or its subsidiaries. 7/2020