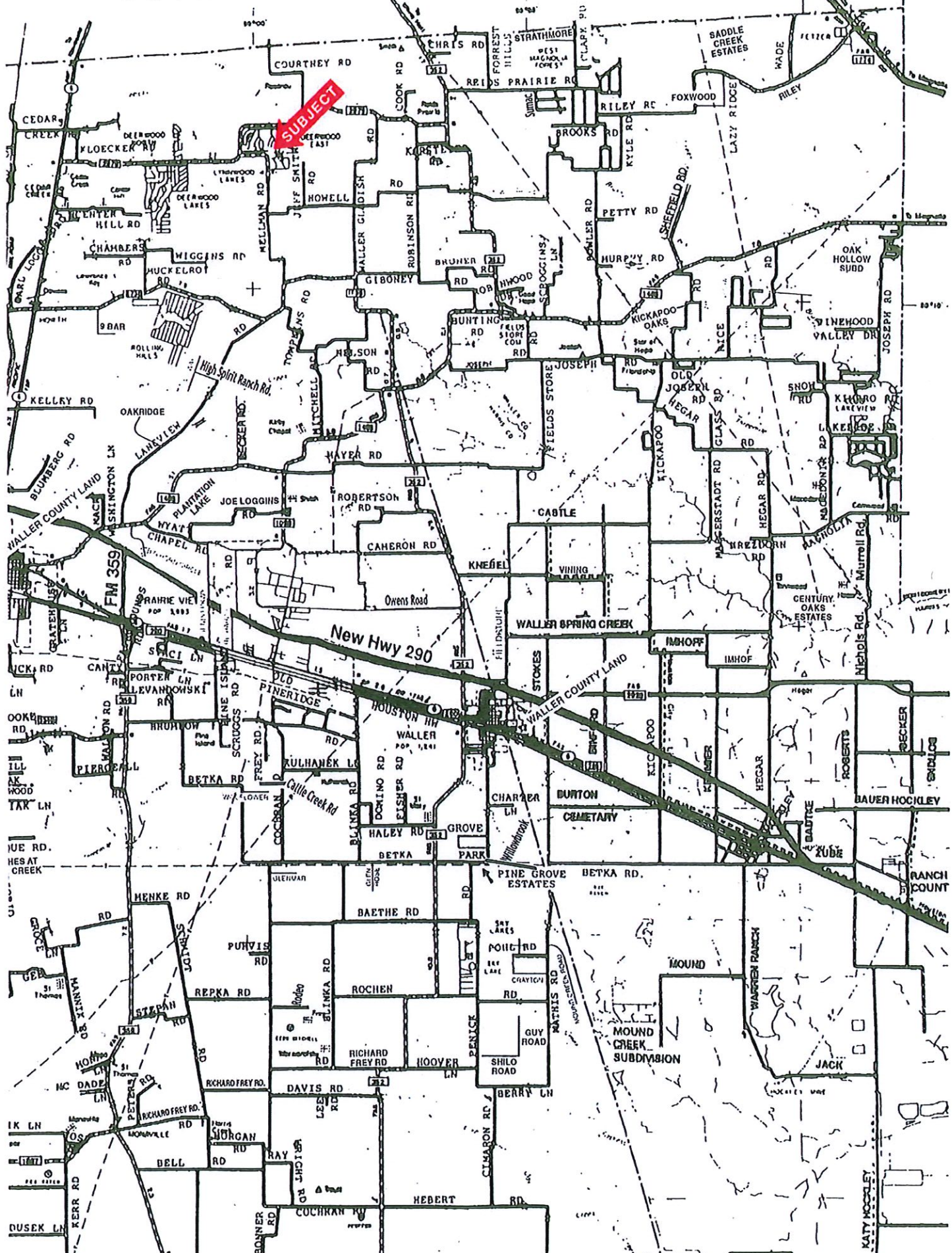


GRIMES COUNTY



SUBJECT

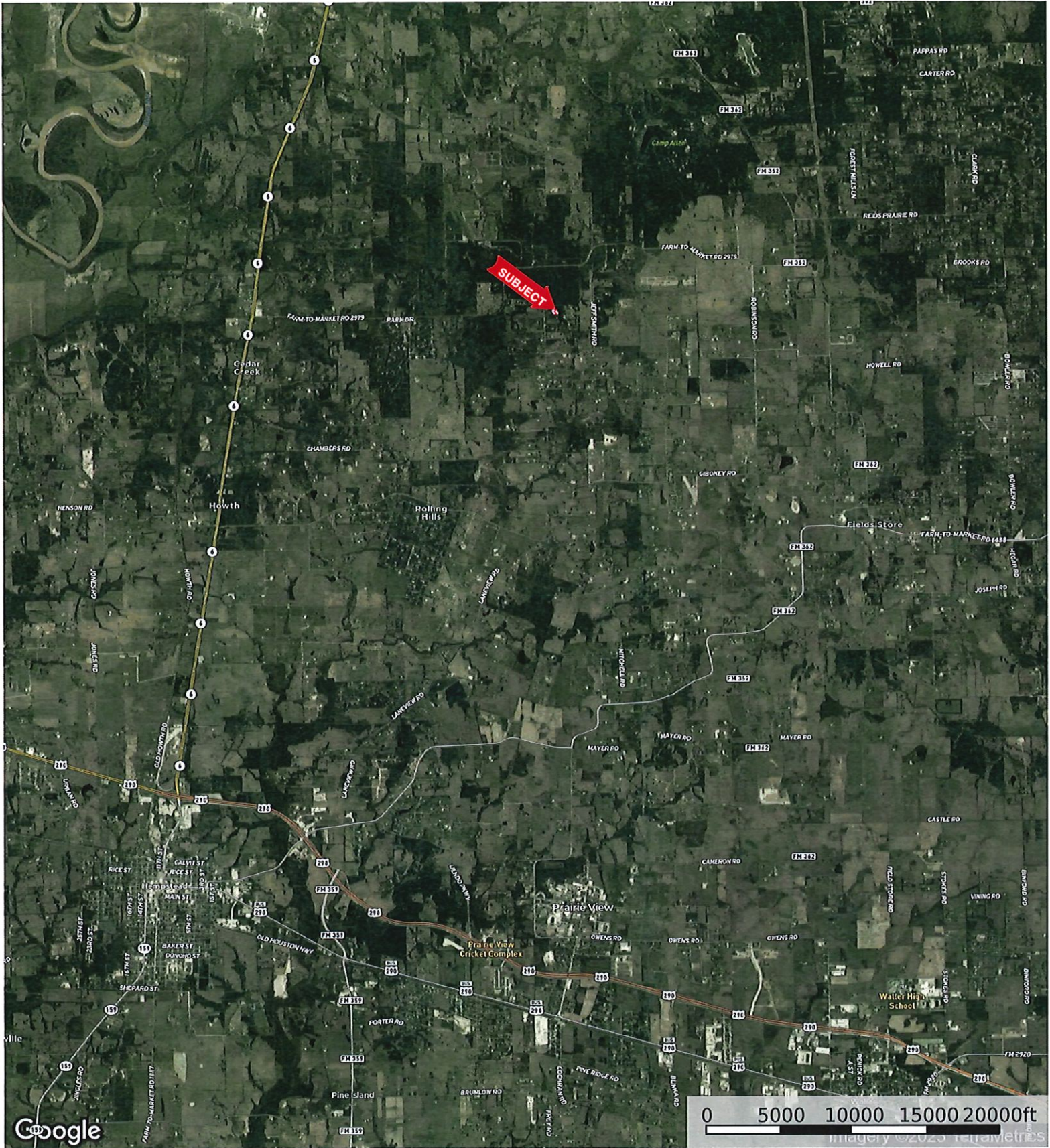
New Hwy 290

FM 359

FM 1921

KATY HOCKLEY

29170 W. Lake Dr.
Waller County, Texas, AC +/-



Boundary

Timothy Phelan
P: (936) 372-9181

WallerCountyLand.com

P.O. Box 1274, Waller, Texas 77484



The information contained herein was obtained from sources deemed to be reliable. MapRight Services makes no warranties or guarantees as to the completeness or accuracy thereof.


29170 W. Lake Dr.
Waller County, Texas, AC +/-



Google

Imagery ©2023 Houston-Galveston Area Council, Maxar Technologies, Texas General Land Office, U.S. Geological Survey


 Boundary

 The information contained herein was obtained from sources deemed to be reliable. MapRight Services makes no warranties or guarantees as to the completeness or accuracy thereof.

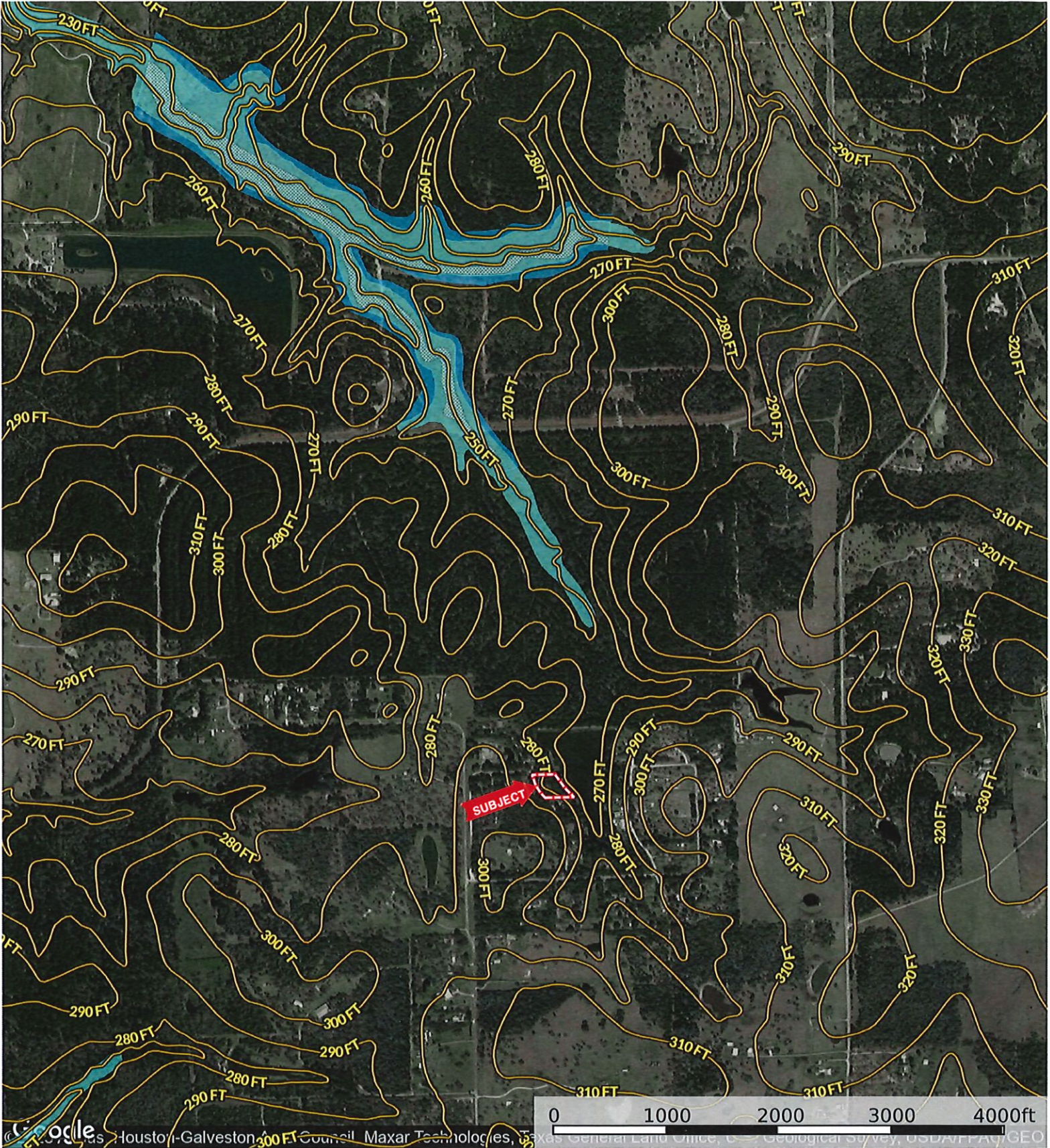
29170 W. Lake Dr.
Waller County, Texas, AC +/-



-  Boundary
-  Stream, Intermittent
-  River/Creek
-  Water Body

 The information contained herein was obtained from sources deemed to be reliable. MapRight Services makes no warranties or guarantees as to the completeness or accuracy thereof.

29170 W. Lake Dr.
Waller County, Texas, AC +/-



- Boundary
- 100 Year Floodplain
- 500 Year Floodplain
- Floodway
- Special
- Unmapped/ Not Included