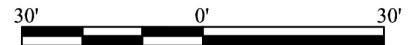


ADDRESS: 1235 WATERSIDE TRACE

AREA: 9,342 S.F. ~ 0.21 ACRES

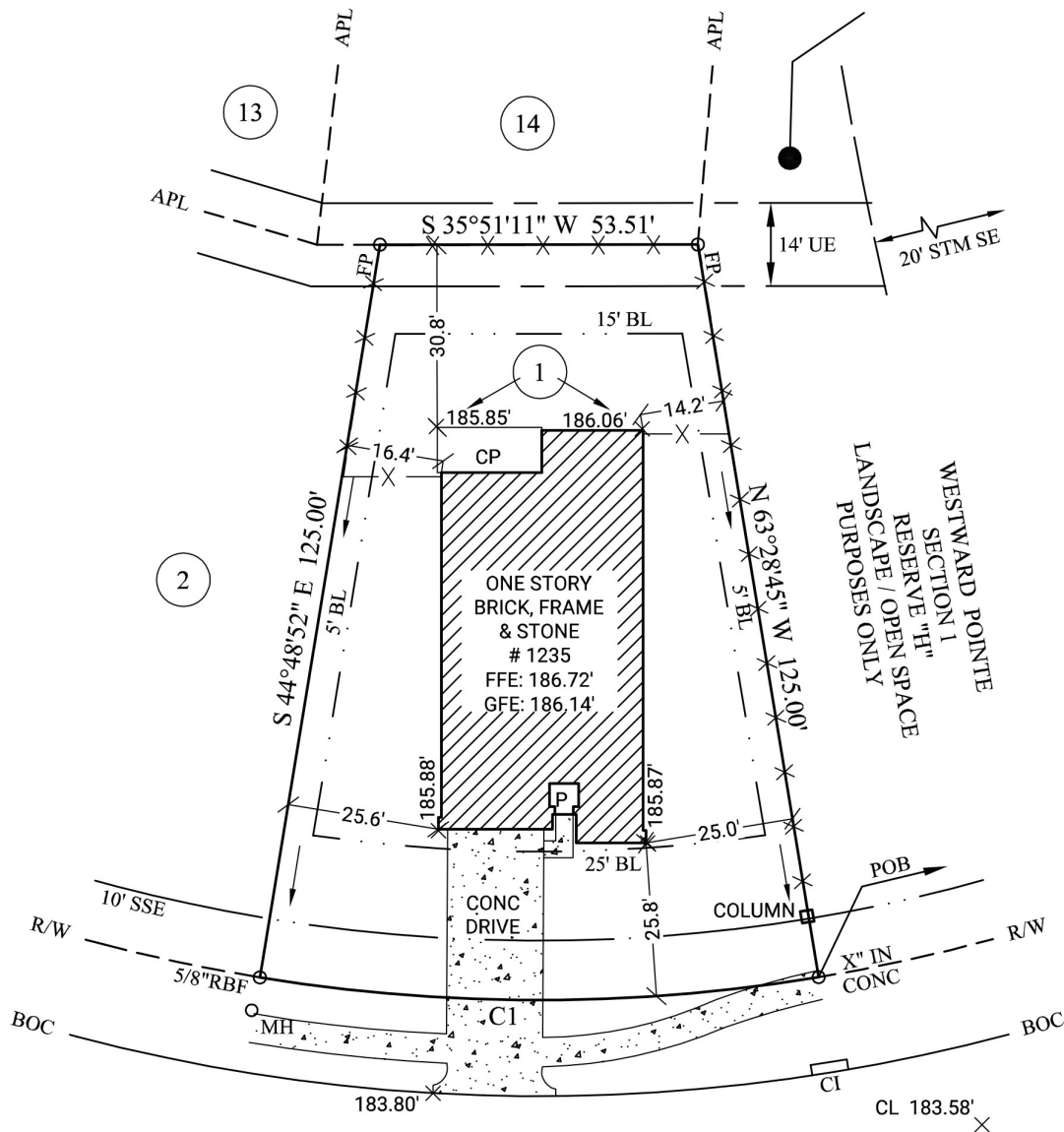
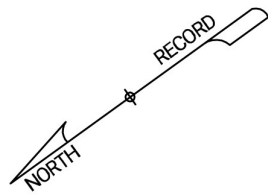
PLAT NO. 222960

Curve	Radius	Length	Chord	Chord Bearing
C1	290.00'	94.47'	94.05'	N 35°51'11" E



GRAPHIC SCALE: 1" = 30'

WESTWARD POINTE
SECTION 1
RESERVE "H"
LANDSCAPE / OPEN SPACE
PURPOSES ONLY



WESTWARD POINTE
SECTION 1
RESERVE "H"
LANDSCAPE / OPEN SPACE
PURPOSES ONLY

LEGEND

- RBF Rebar Found
- BL Building Line
- BOC Back of Curb
- R/W Right of Way
- CI Curb Inlet
- MH Manhole
- TOF Top of Form
- UE Utility Easement
- SSE Sanitary Sewer Easement
- STM SE Storm Sewer Easement
- APL Approximate Property Line
- POB Point of Beginning

WATERSIDE TRACE
60' PUBLIC R/W

POB
79.77' ALONG THE R/W TO
THE VARIABLE R/W OF
WESTWARD POINTE DRIVE

NOTE: COMMON PRIVACY FENCE CONSTRUCTED BY BUILDER.

GENERAL NOTES: This property is subject to additional easements or restrictions of record. Carter & Clark Surveyors is unable to warrant the accuracy of boundary information, structures, easements, and buffers that are illustrated on the subdivision plat. Utility easement has not been field verified by surveyor. contact utility contractor for location prior to construction (if applicable). This plat is for exclusive use by client. Use by third parties is at their own risk. Dimensions from house to property lines should not be used to establish fences. This plat has been calculated for closure and is found to be accurate within one foot in 10,000+ feet. The field data upon which this plat is based has a closure precision of one foot in 10,000+ feet and an angular error of 7 seconds per angle point and was adjusted using the compass rule. Equipment used: Leica TS13 Robotic Total Station.