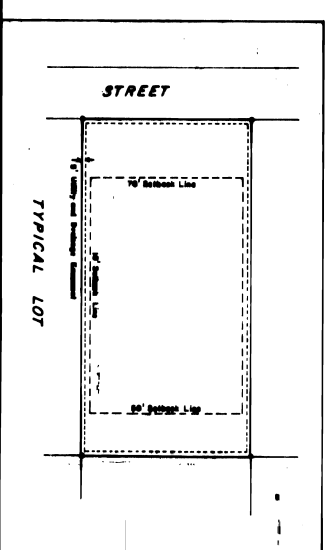
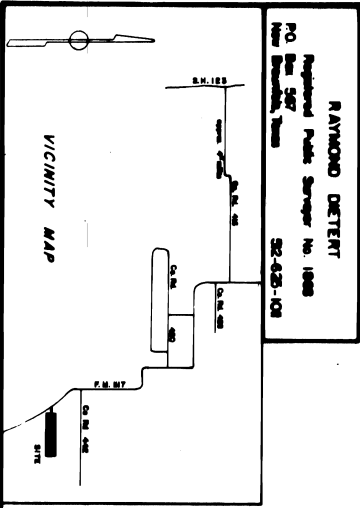
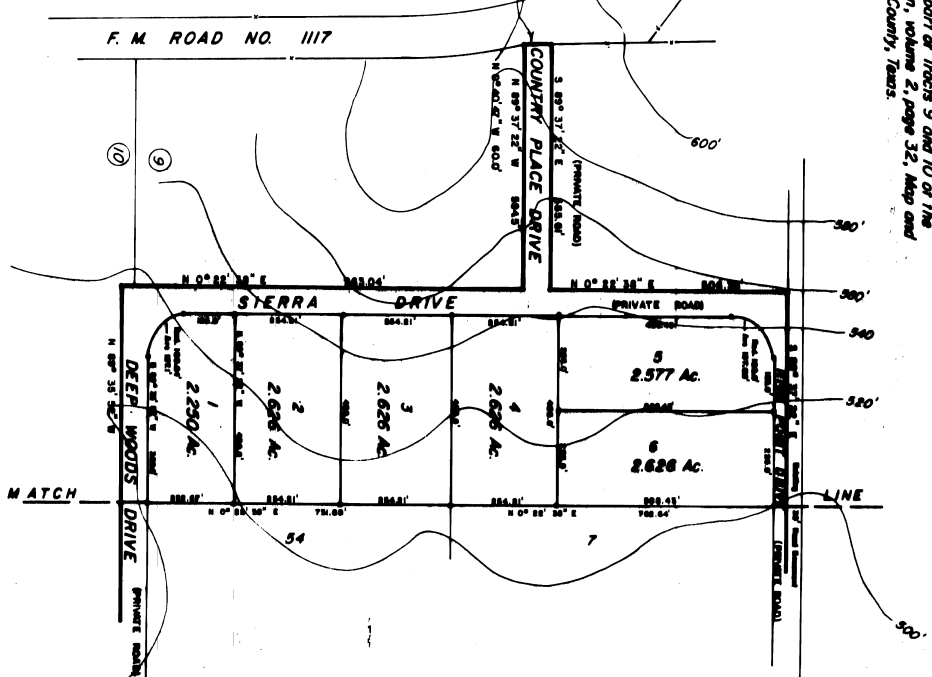


COUNTRY PLACE SUBDIVISION

A subdivision of 147,729 acres situated in the Thos Weeks Survey, A-344, and being part of Tracts 9 and 10 of the McLary Ranch Subdivision, volume 2, page 32, Map and Plat Records, Goodhue County, Texas.



STATE OF TEXAS
COUNTY OF GOODHUE

I, KENNETH E. TITMAN, owner of the property subdivided in the above and foregoing plat of COUNTRY PLACE SUBDIVISION, do hereby make subdivision of said property according to the lines, streets, alleys, parts and easements shown thereon and designate said subdivision as COUNTRY PLACE SUBDIVISION, being located in the Thos. Weeks Survey, A-344, Goodhue County, Texas.

Kenneth E. Titman
Kenneth E. Titman

STATE OF TEXAS
COUNTY OF GOODHUE

I, RAYMOND DETERT, R.P.S. 1868, do hereby certify that this plat of COUNTRY PLACE SUBDIVISION represents a true and correct reproduction as surveyed under my supervision on the ground.

Raymond Detert
Raymond Detert, R.P.S. 1868

STATE OF TEXAS
COUNTY OF GOODHUE

This plat of COUNTRY PLACE SUBDIVISION has been submitted to and considered by the Commissioners Court of Goodhue County, of the County to all requirements of the Subdividing Regulation of the County as to which approval is required and is hereby approved by such Court. This the 22nd day of July, 1985.

Adonna E. Schmitz
Adonna E. Schmitz
County Clerk, Goodhue County, Texas

Barry A. Schmitz
Barry A. Schmitz
Commissioner, Pct. 1

James E. Schmitz
James E. Schmitz
Commissioner, Pct. 3

Thomas E. Schmitz
Thomas E. Schmitz
Commissioner, Pct. 4

Gregory E. Schmitz
Gregory E. Schmitz
Commissioner, Pct. 2

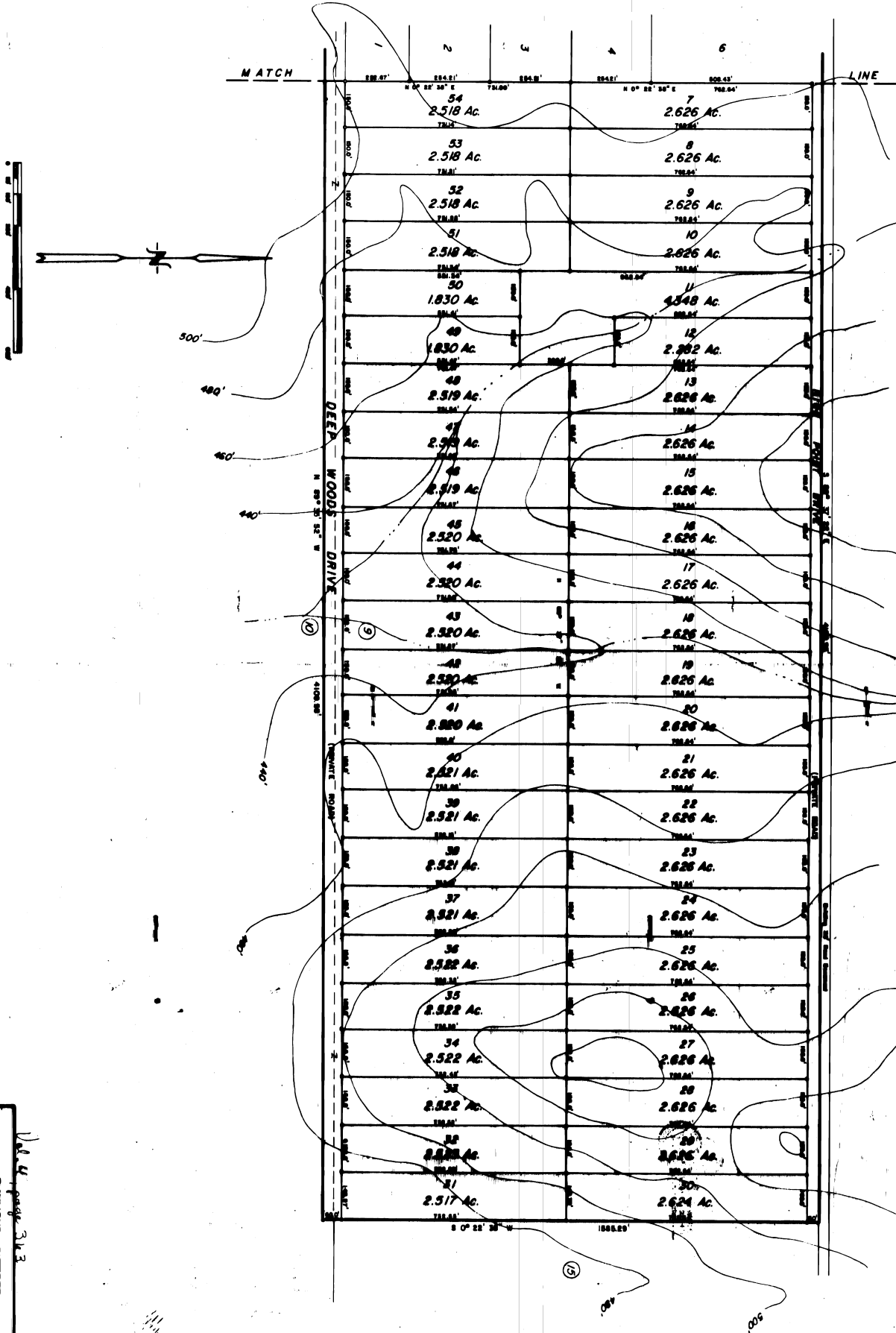
Gregory E. Schmitz
Gregory E. Schmitz
Clerk of the County of Goodhue, Texas

STATE OF TEXAS
COUNTY OF GOODHUE

I, GREGORY E. SCHMITZ, Clerk of the County of Goodhue, Texas, do hereby certify that the foregoing plat of COUNTRY PLACE SUBDIVISION was filed for record in my office on the 22nd day of July, 1985, at 10:30 o'clock a.m., and duly recorded the 22nd day of July, 1985, at 10:30 o'clock a.m. in the Map and Plat Records of Goodhue County, Texas, in volume 2, page 32, 33. In testimony whereof I have hereunto set my hand and official seal of office this 22nd day of July, 1985.

Gregory E. Schmitz
Clerk of the County of Goodhue, Texas

COUNTRY PLACE SUBDIVISION



RAYMOND DETERT
 Registered Professional Surveyor No. 1888
 52-43-10