

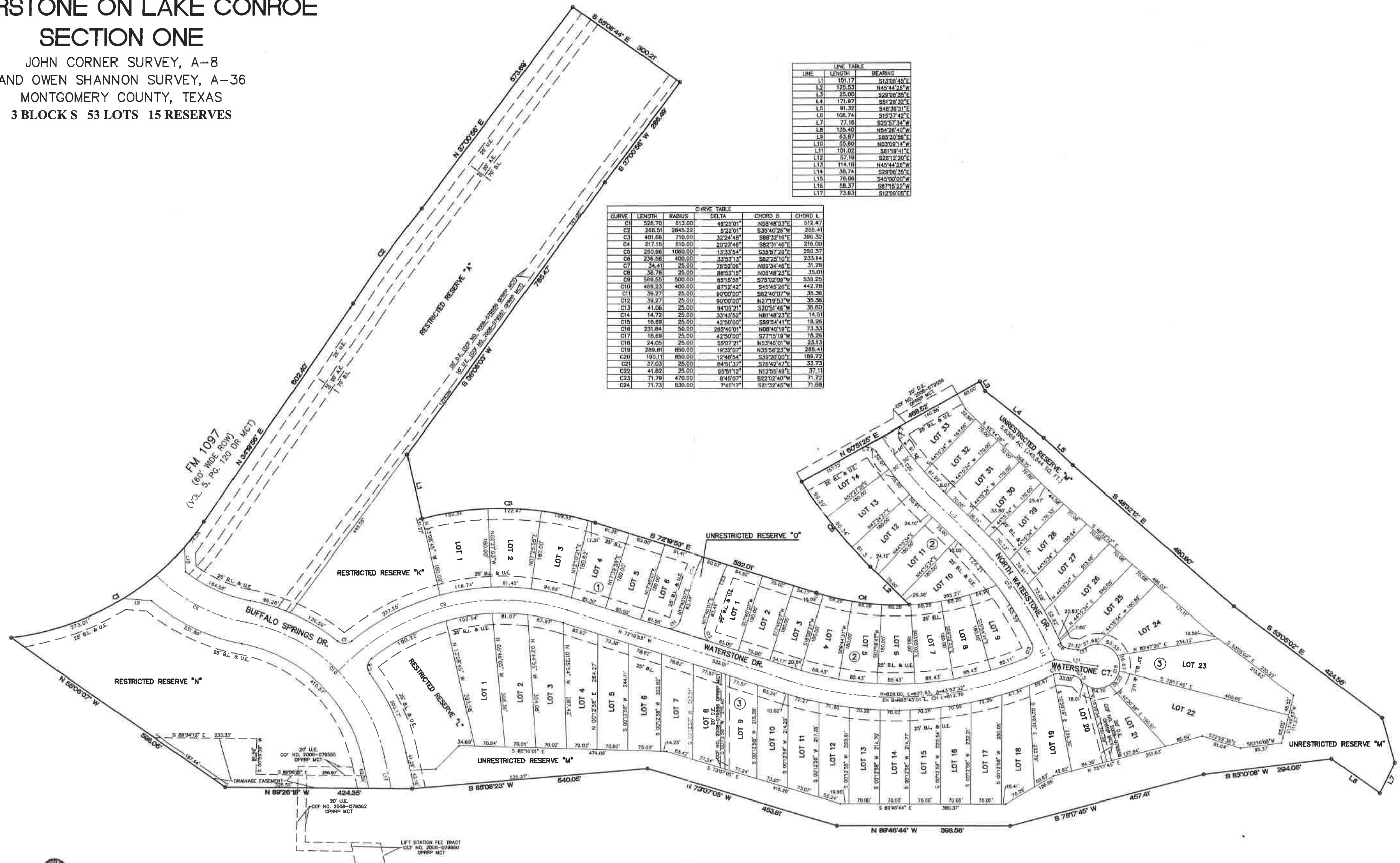
# WATERSTONE ON LAKE CONROE

## SECTION ONE

JOHN CORNER SURVEY, A-8  
AND OWEN SHANNON SURVEY, A-36  
MONTGOMERY COUNTY, TEXAS  
3 BLOCKS 53 LOTS 15 RESERVES

LINE	LENGTH	BEARING
L1	151.17	S132°08'45"E
L2	125.53	N45°44'26"W
L3	25.00	S28°08'35"E
L4	171.97	S51°28'32"E
L5	81.32	S46°38'31"E
L6	106.74	S15°37'42"E
L7	77.18	S25°57'34"W
L8	135.40	N54°26'40"W
L9	63.87	S85°30'56"E
L10	55.60	N03°09'14"W
L11	101.02	S81°08'41"E
L12	57.18	S26°12'20"E
L13	114.18	N45°44'26"W
L14	38.74	S28°08'35"E
L15	78.08	S45°00'00"W
L16	58.37	S87°15'22"W
L17	73.63	S12°02'05"E

CURVE	LENGTH	RADIUS	DELTA	CHORD B	CHORD L
C1	528.70	813.00	49°25'01"	N58°40'33"E	512.47
C2	286.91	2845.22	5°22'01"	S35°40'26"W	286.41
C3	401.66	710.00	32°24'48"	S88°32'16"E	366.32
C4	217.15	610.00	20°23'48"	S82°31'46"E	216.00
C5	250.98	1060.00	13°43'54"	S36°57'29"E	250.37
C6	236.58	400.00	33°33'13"	S62°28'19"E	233.14
C7	34.41	25.00	78°32'08"	N89°54'48"E	31.78
C8	38.78	25.00	86°53'15"	N06°48'23"E	35.01
C9	569.55	500.00	85°15'58"	S75°02'09"W	539.29
C10	489.23	400.00	87°12'42"	S47°45'26"E	442.78
C11	39.27	25.00	90°00'00"	S62°40'07"W	35.39
C12	39.27	25.00	90°00'00"	N27°19'53"W	35.36
C13	41.06	25.00	94°05'11"	S20°51'46"W	36.60
C14	14.72	25.00	33°43'52"	N81°48'23"E	14.51
C15	18.69	25.00	42°30'00"	S59°54'41"E	18.26
C16	231.84	50.00	78°54'01"	N08°40'19"E	73.33
C17	18.69	25.00	42°30'00"	S77°15'19"W	18.29
C18	24.05	25.00	55°07'11"	N53°46'01"W	21.13
C19	289.81	850.00	19°22'07"	N35°56'23"W	288.41
C20	190.11	850.00	12°48'54"	S39°20'00"E	189.72
C21	37.03	25.00	84°01'37"	S76°42'47"E	33.73
C22	41.82	25.00	85°01'19"	N12°05'49"E	37.11
C23	71.79	470.00	8°45'07"	S22°02'40"W	71.72
C24	71.73	530.00	7°45'17"	S21°32'45"W	71.68



SURVEYOR:

TOWN AND COUNTRY LAND SURVEYING  
DAVID J. STRAUSS - PRESIDENT  
REGISTERED PROFESSIONAL LAND SURVEYOR - 4633  
25307 NORTH FREEWAY SUITE 100  
P.O. BOX 8693  
THE WOODLANDS, TEXAS 77380  
PHONE (281) 465-8730  
FAX (281) 465-8731