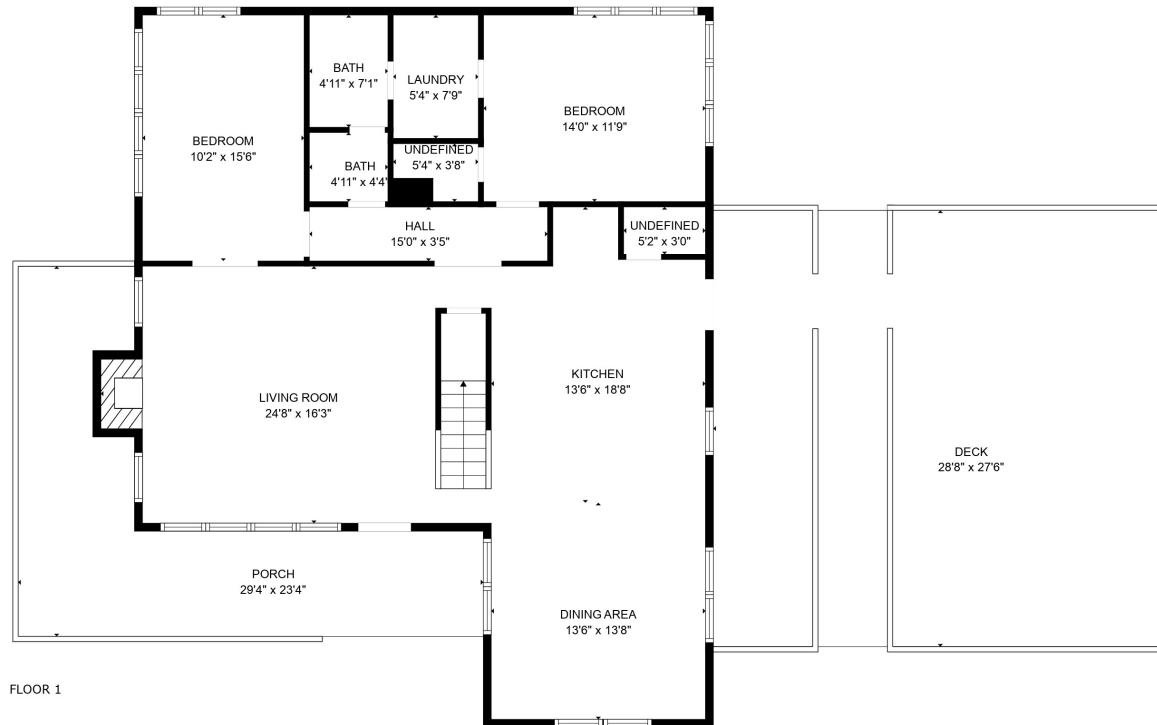


FLOOR 2

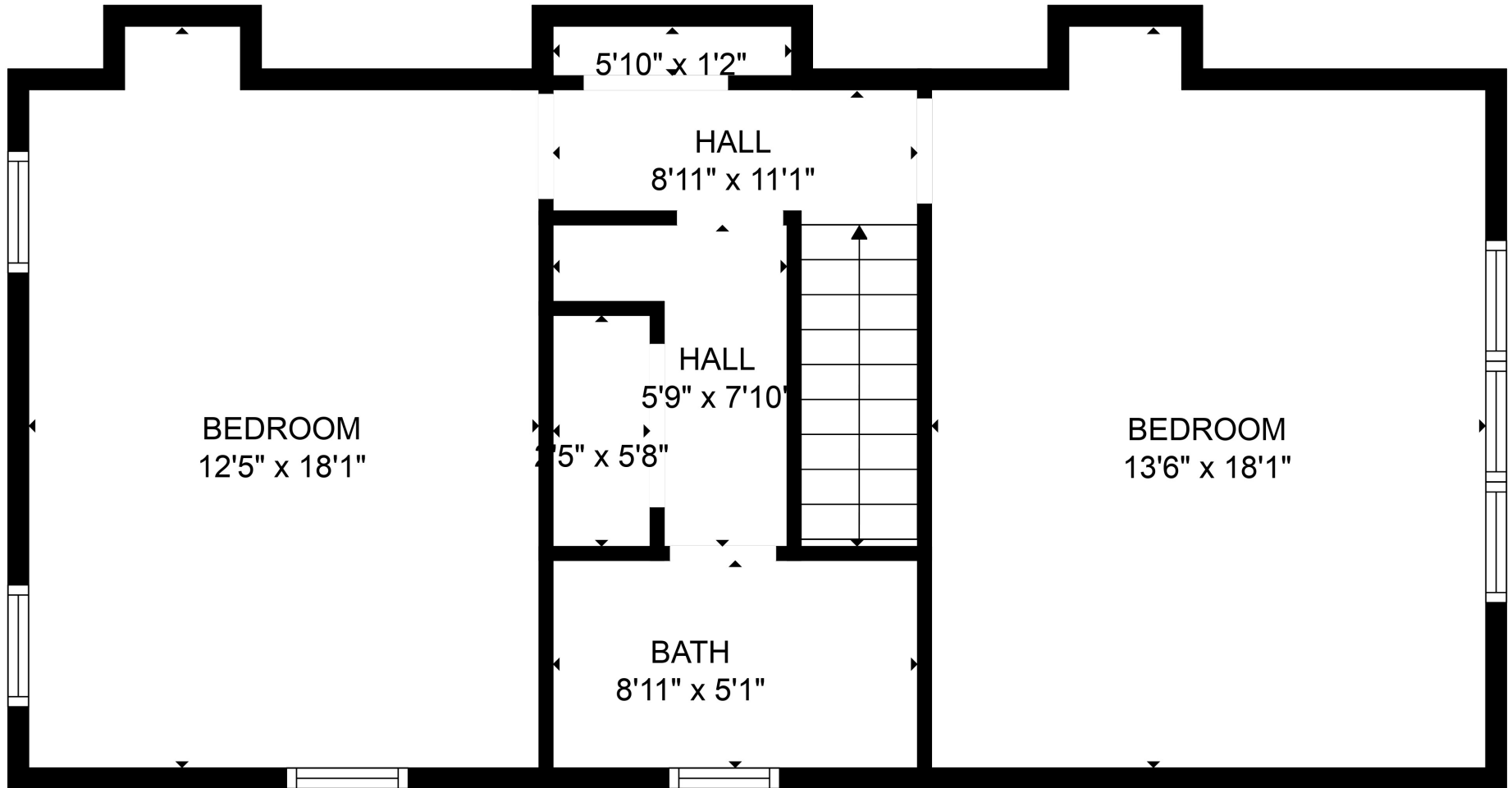


FLOOR 1

GROSS INTERNAL AREA  
 FLOOR 1: 1318 sq. ft, FLOOR 2: 605 sq. ft  
 EXCLUDED AREAS: , DECK: 788 sq. ft  
 PORCH: 303 sq. ft  
 TOTAL: 1923 sq. ft

MEASUREMENTS ARE CALCULATED BY CUBICASA TECHNOLOGY. DEEMED HIGHLY RELIABLE BUT NOT GUARANTEED.

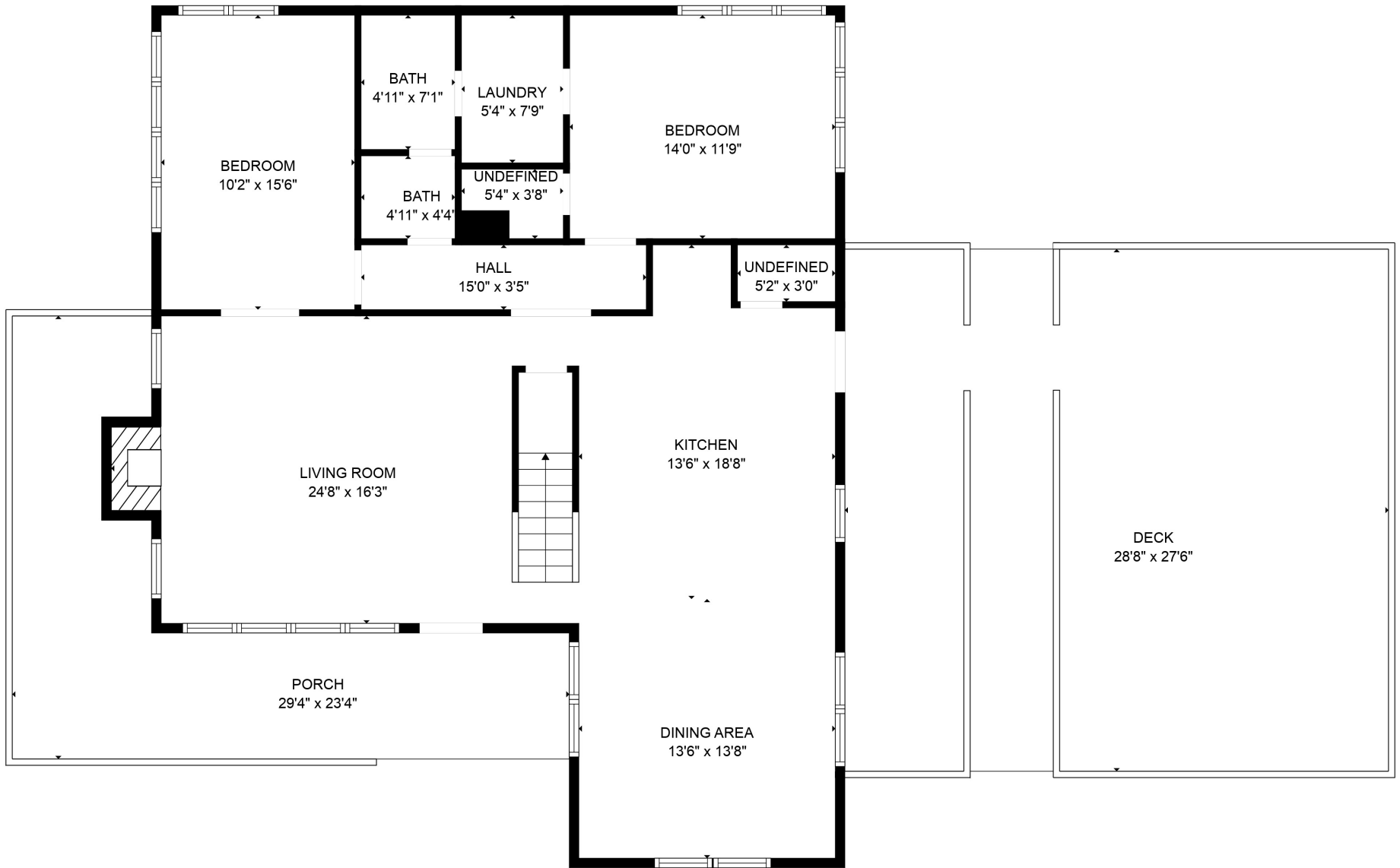




GROSS INTERNAL AREA  
 FLOOR 1: 1318 sq. ft, FLOOR 2: 605 sq. ft  
 EXCLUDED AREAS: , DECK: 788 sq. ft  
 PORCH: 303 sq. ft  
 TOTAL: 1923 sq. ft

MEASUREMENTS ARE CALCULATED BY CUBICASA TECHNOLOGY. DEEMED HIGHLY RELIABLE BUT NOT GUARANTEED.



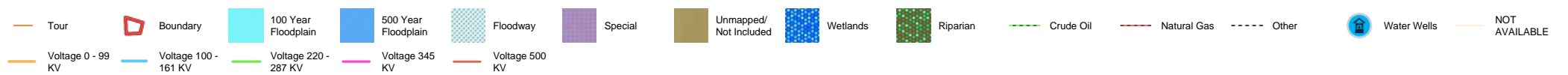
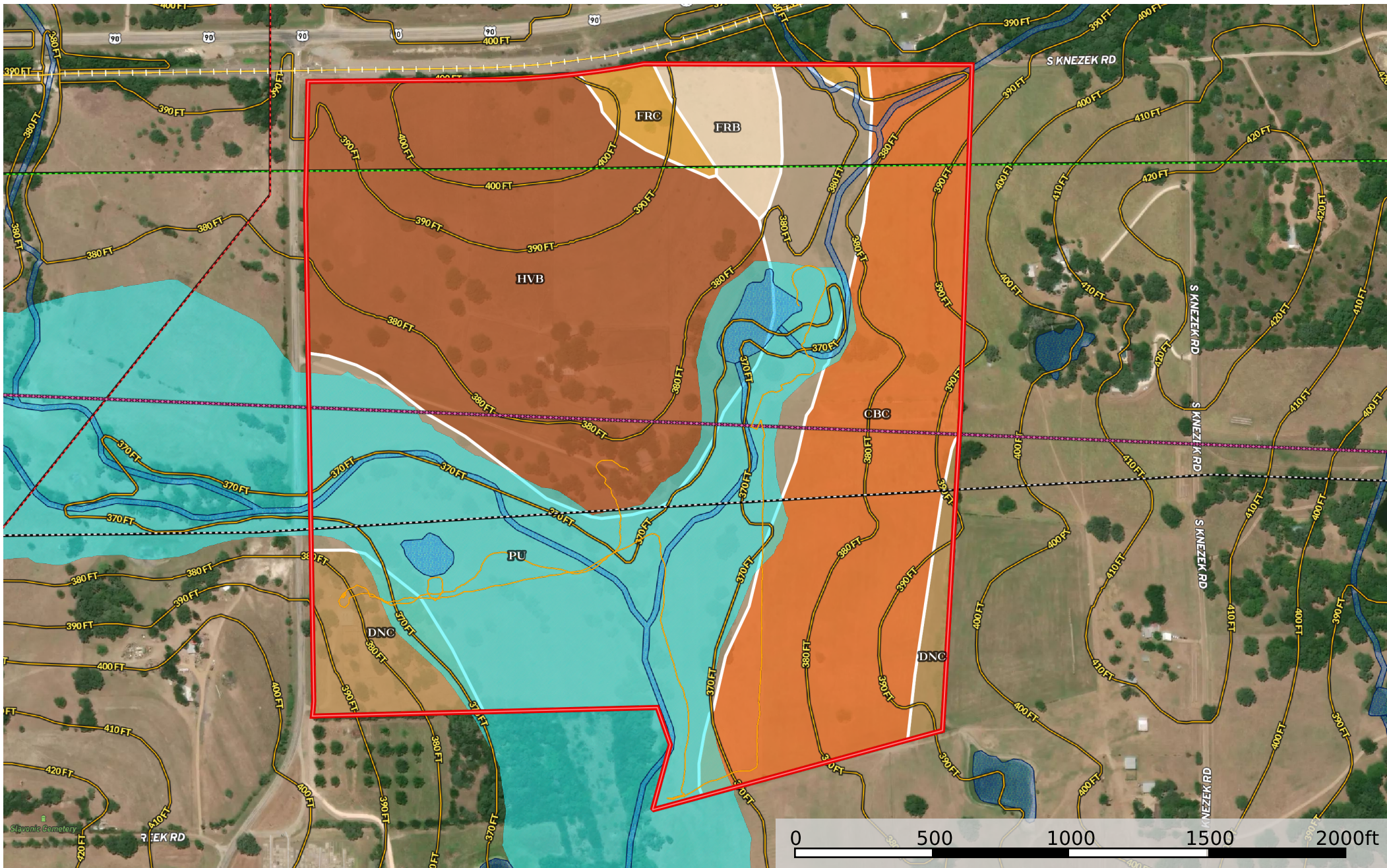


GROSS INTERNAL AREA  
 FLOOR 1: 1318 sq. ft, FLOOR 2: 605 sq. ft  
 EXCLUDED AREAS: , DECK: 788 sq. ft  
 PORCH: 303 sq. ft  
 TOTAL: 1923 sq. ft

MEASUREMENTS ARE CALCULATED BY CUBICASA TECHNOLOGY. DEEMED HIGHLY RELIABLE BUT NOT GUARANTEED.



**339 FM 1295, Flatonia 78941**  
 Fayette County, Texas, 130 AC +/-



|  Boundary 130.42 ac

SOIL CODE	SOIL DESCRIPTION	ACRES	%	CPI	NCCPI	CAP
HvB	Hallettsville fine sandy loam, 1 to 3 percent slopes	46.01	35.28	0	35	3s
Pu	Pursley clay loam, frequently flooded	39.24	30.09	0	48	5w
CbC	Carbengle sandy clay loam, 3 to 5 percent slopes	30.99	23.76	0	30	4e
DnC	Dubina loamy fine sand, 2 to 5 percent slopes	8.03	6.16	0	42	3e
FrB	Frelsburg clay, 1 to 3 percent slopes	3.64	2.79	0	31	3e
FrC	Frelsburg clay, 3 to 5 percent slopes	2.51	1.92	0	31	3e
TOTALS		130.42(*)	100%	-	37.97	3.84

(\*) Total acres may differ in the second decimal compared to the sum of each acreage soil. This is due to a round error because we only show the acres of each soil with two decimal.



**339 FM 1295, Flatonia 78941**  
 Fayette County, Texas, 130 AC +/-

