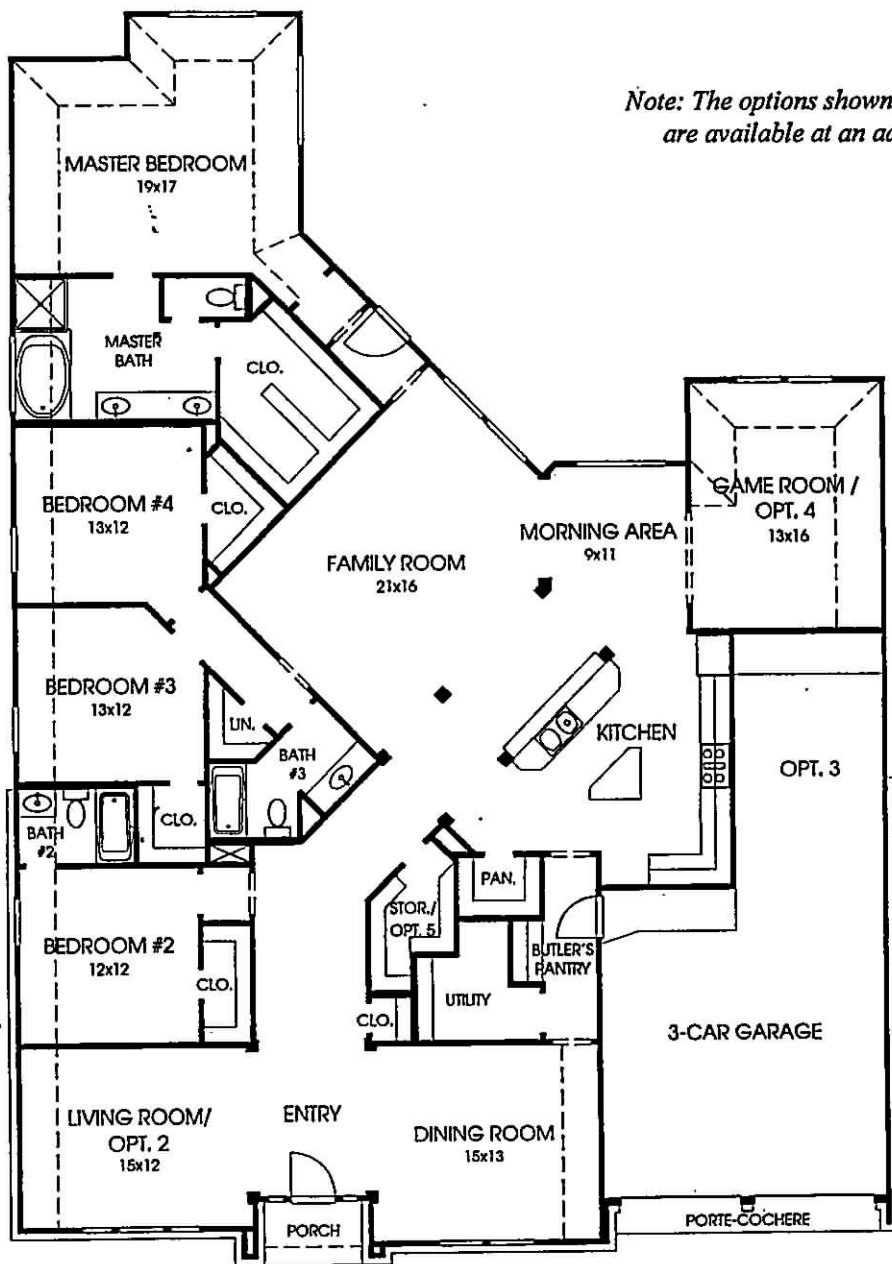


DESIGNS

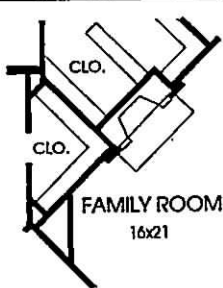
Plan 3228W

This home contains approximately 3,228 square feet and includes four bedrooms and three baths.

Note: The options shown on this brochure are available at an additional cost.

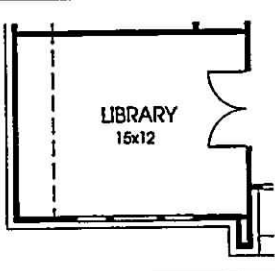


OPTION 1



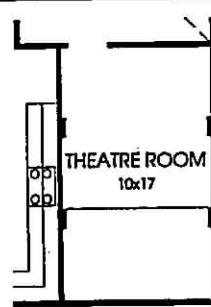
This floorplan has the option for a fireplace in the family room.

OPTION 2



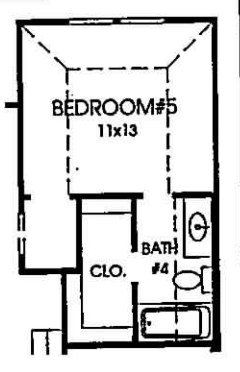
This floorplan has the option for a library with double french doors in lieu of the living room.

OPTION 3



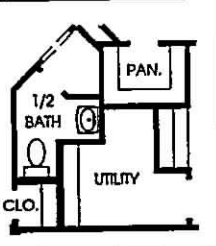
This floorplan has the option for a theatre room in lieu of the third garage. This option adds 164 square feet to the plan.

OPTION 4



This floorplan has the option for a fifth bedroom and a fourth bath. This option adds 47 square feet to the plan.

OPTION 5



This floorplan has the option for a half bath.

OPTION 6



This floorplan has the option for an alternate bay window location in the master bedroom.

Not included: inside keyed deadbolt locks, refrigerators, furnishings, drapery, plants, decorator items and all other personal property being used in model homes. Builder reserves the right to make changes in the plans and specifications, and to substitute material of similar quality. Room dimensions indicate approximate inside area measurements.
MAY 2007 © 2007 Perry Homes (CL&CL-W)

PERRY HOMES

