

**★ CITY ORDINANCES**  
**★★ RESTRICTIVE COVENANTS**  
**★★★ BUILDER GUIDELINES**  
 WIRE FENCE — X —  
 CHAIN LINK FENCE — O —  
 IRON FENCE — I —  
 WOOD FENCE — // —  
 OVERHEAD UTILITIES — U —

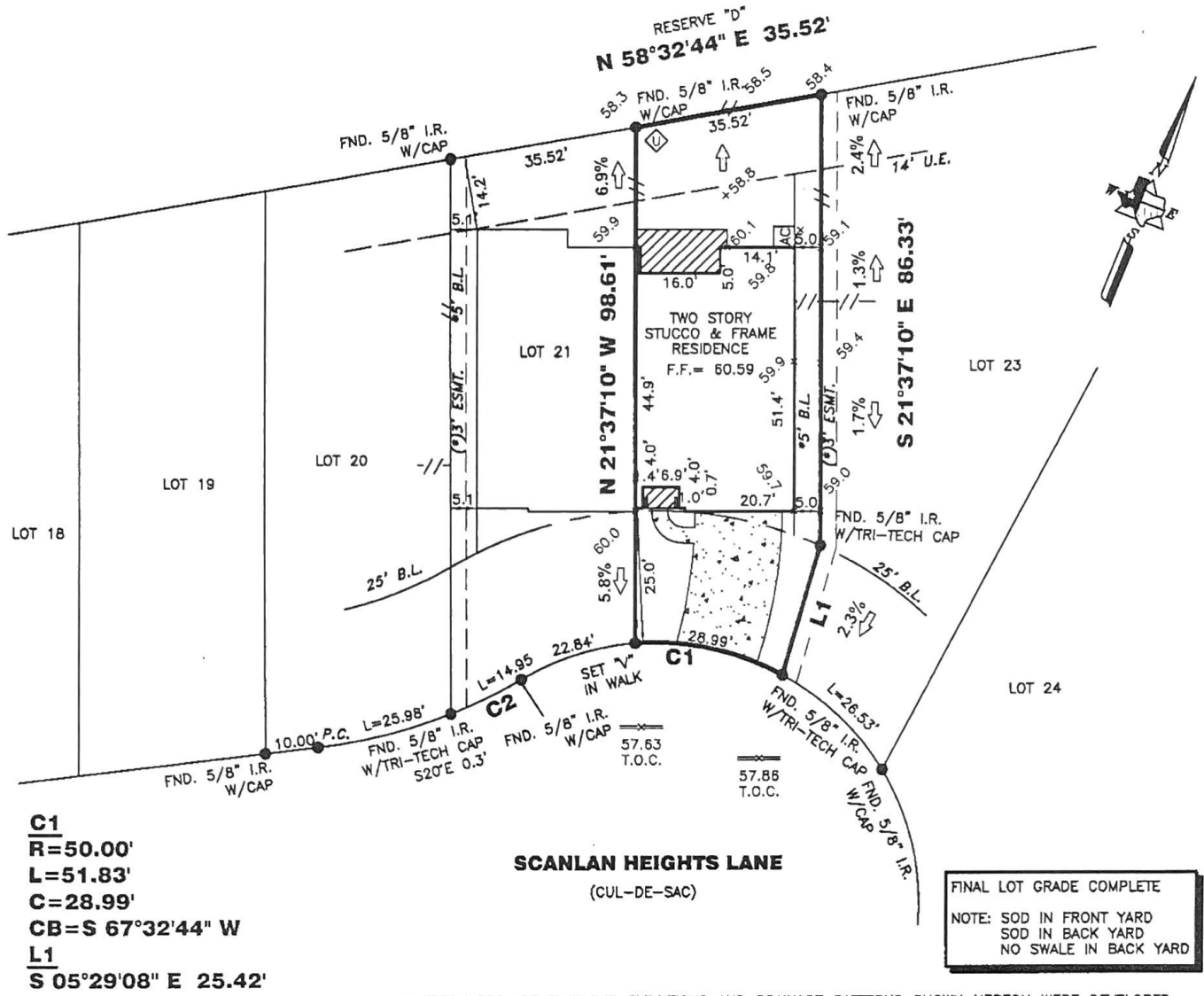
BL = BUILDING LINE  
 PL = PROPERTY LINE  
 UE = UTILITY EASEMENT  
 AE = AERIAL EASEMENT  
 MH = MANHOLE  
 FNC = FENCE  
 BUILDING LINE  
 ESMT LINE  
 AERIAL ESMT

I.R. = IRON ROD  
 I.P. = IRON PIPE  
 PUE = PUBLIC UTILITY ESMT.  
 PAE = PERMANENT ACCESS ESMT.  
 MUE = MUNICIPAL UTILITY ESMT.  
 SSE = SANITARY SEWER ESMT.  
 WLE = WATERLINE EASEMENT  
 ROW = RIGHT OF WAY  
 FND = FOUND

**LEGEND**  
 CONCRETE  
 COVERED  
 SOD

ELECT. BOX  
 A/C PAD  
 FIRE HYDRANT  
 LIGHT STANDARD  
 UTILITY POLE  
 MANHOLE  
 WATER METER  
 UTIL. PEDESTAL

SCALE 1"=30'



**C1**  
**R=50.00'**  
**L=51.83'**  
**C=28.99'**  
**CB=S 67°32'44" W**  
**L1**  
**S 05°29'08" E 25.42'**

**SCANLAN HEIGHTS LANE**  
 (CUL-DE-SAC)

FINAL LOT GRADE COMPLETE  
 NOTE: SOD IN FRONT YARD  
 SOD IN BACK YARD  
 NO SWALE IN BACK YARD

I HEREBY DECLARE THAT THE ELEVATIONS AND DRAINAGE PATTERNS SHOWN HEREON WERE DEVELOPED FROM A SURVEY OF THIS PROPERTY ACCURATELY DEPICT RELATIVE ELEVATIONS AS THEY EXISTED. THE RELATIVE ELEVATIONS AS DEPICTED, MAY CHANGE SUBSEQUENT TO THE DATE OF THIS SURVEY DUE TO ADDITION OR REMOVAL OF THE SOIL BY ACTS OF MAN; EROSION BY WIND OR WATER; OR OTHER FACTORS. THE HOMEOWNER MUST MAINTAIN THESE ELEVATIONS AND GRADES TO PROPERLY DRAIN THE WATER AWAY FROM THE HOME.

TBM: 1621-1-1: BOX CUT ON INLET AT BACK OF CURB IN FRONT OF LOTS 14 & 15, BLK. 2; ELEV=56.87'  
 (\*)' ESMT.-C.F. NO. 2015093013

**9539 SCANLAN HEIGHTS LANE**

**PROPERTY INFORMATION**

LOT 22 BLOCK 2

SUBDIVISION:  
 ENCLAVE AT SCANLAN TRACE

**RECORDING INFO:**  
 PLAT NO. 20150146, PLAT RECORDS  
 FORT BEND COUNTY, TEXAS

**BORROWER:**  
 ELAINE WHALEY

**TITLE CO.**  
 CHICAGO TITLE/EXECUTIVE TITLE CO., LTD.

G.F.# ETH1701017 G.F. DATE: 4/20/17

**SURVEYED FOR:**  
 PERRY HOMES

**DRAWING INFORMATION**

TRI-TECH JOB NO: Y28194-17

CLIENT JOB NO: N/A

DRAWN BY: RSR

BEARING BASE: REFERRED TO PLAT NORTH

FIELD DATE: 02-27-17

**FLOOD INFORMATION**

F.I.R.M. NO: 48157C PANEL: 0435L

REVISED DATE: 04-02-2014 ZONE: "X SHADED"

**NOTES:**

ALL EASEMENTS AND BUILDING LINES SHOWN ARE PER THE RECORDED PLAT UNLESS OTHERWISE NOTED.

ALL ROD CAPS ARE STAMPED "LIA ENG" UNLESS OTHERWISE NOTED.

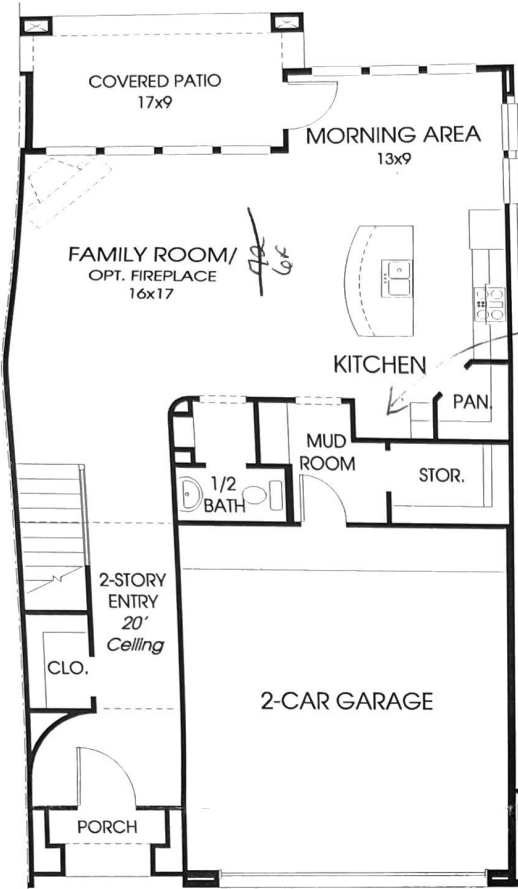
SUBJECT TO A DRAINAGE EASEMENT 20' ON EACH SIDE OF THE CENTERLINE OF ALL NATURAL DRAINAGE COURSES IN THE ADDITION AS SHOWN ON RECORDED PLAT OF SAID ADDITION.

THE TOP OF ALL FLOOR SLABS SHALL BE A MINIMUM OF 58.92' ABOVE MEAN SEA LEVEL. THE TOP SLAB ELEVATION AT ANY POINT ON THE PERIMETER OF THE SLAB SHALL NOT BE LESS THAN 18 INCHES ABOVE NATURAL GROUND.

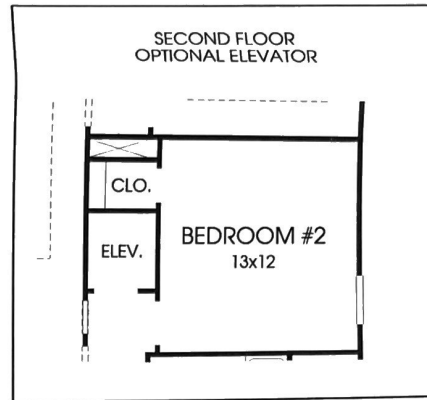
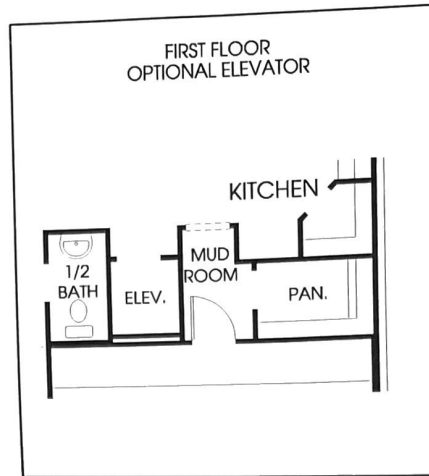
RESTRICTIVE COVENANTS AND EASEMENTS AS DEFINED PER PLAT NO. 20150146, M.R. FB C.T.X., FB C.C. FILE NOS 9670899, 9734408, 9891628, 9911601, 9911835, 2000000474, 20000019691, 2000053209, 2000069270, 2000099274, 2001005861, 2002027989, 2009015778, 2009021437, 2009042754, 2007015862, 2007015863, 2009102944, 2007105422, 2007137969, 2007151135, 2007152919, 2007152920, 2008128377, 2008128378, 2008128379, 2008128380, 2008128381, 2008128382, 2008128383, 2008128384, 2008128385, 2008128386, 2008128387, 2008128388, 2008128389, 2008128390, 2008128391, 2008128392, 2008128393, 2008128394, 2008128395, 2008128396, 2008128397, 2008128398, 2008128399, 2008128400, 2008128401, 2008128402, 2008128403, 2008128404, 2008128405, 2008128406, 2008128407, 2008128408, 2008128409, 2008128410, 2008128411, 2008128412, 2008128413, 2008128414, 2008128415, 2008128416, 2008128417, 2008128418, 2008128419, 2008128420, 2008128421, 2008128422, 2008128423, 2008128424, 2008128425, 2008128426, 2008128427, 2008128428, 2008128429, 2008128430, 2008128431, 2008128432, 2008128433, 2008128434, 2008128435, 2008128436, 2008128437, 2008128438, 2008128439, 2008128440, 2008128441, 2008128442, 2008128443, 2008128444, 2008128445, 2008128446, 2008128447, 2008128448, 2008128449, 2008128450, 2008128451, 2008128452, 2008128453, 2008128454, 2008128455, 2008128456, 2008128457, 2008128458, 2008128459, 2008128460, 2008128461, 2008128462, 2008128463, 2008128464, 2008128465, 2008128466, 2008128467, 2008128468, 2008128469, 2008128470, 2008128471, 2008128472, 2008128473, 2008128474, 2008128475, 2008128476, 2008128477, 2008128478, 2008128479, 2008128480, 2008128481, 2008128482, 2008128483, 2008128484, 2008128485, 2008128486, 2008128487, 2008128488, 2008128489, 2008128490, 2008128491, 2008128492, 2008128493, 2008128494, 2008128495, 2008128496, 2008128497, 2008128498, 2008128499, 2008128500, 2008128501, 2008128502, 2008128503, 2008128504, 2008128505, 2008128506, 2008128507, 2008128508, 2008128509, 2008128510, 2008128511, 2008128512, 2008128513, 2008128514, 2008128515, 2008128516, 2008128517, 2008128518, 2008128519, 2008128520, 2008128521, 2008128522, 2008128523, 2008128524, 2008128525, 2008128526, 2008128527, 2008128528, 2008128529, 2008128530, 2008128531, 2008128532, 2008128533, 2008128534, 2008128535, 2008128536, 2008128537, 2008128538, 2008128539, 2008128540, 2008128541, 2008128542, 2008128543, 2008128544, 2008128545, 2008128546, 2008128547, 2008128548, 2008128549, 2008128550, 2008128551, 2008128552, 2008128553, 2008128554, 2008128555, 2008128556, 2008128557, 2008128558, 2008128559, 2008128560, 2008128561, 2008128562, 2008128563, 2008128564, 2008128565, 2008128566, 2008128567, 2008128568, 2008128569, 2008128570, 2008128571, 2008128572, 2008128573, 2008128574, 2008128575, 2008128576, 2008128577, 2008128578, 2008128579, 2008128580, 2008128581, 2008128582, 2008128583, 2008128584, 2008128585, 2008128586, 2008128587, 2008128588, 2008128589, 2008128590, 2008128591, 2008128592, 2008128593, 2008128594, 2008128595, 2008128596, 2008128597, 2008128598, 2008128599, 2008128600, 2008128601, 2008128602, 2008128603, 2008128604, 2008128605, 2008128606, 2008128607, 2008128608, 2008128609, 2008128610, 2008128611, 2008128612, 2008128613, 2008128614, 2008128615, 2008128616, 2008128617, 2008128618, 2008128619, 2008128620, 2008128621, 2008128622, 2008128623, 2008128624, 2008128625, 2008128626, 2008128627, 2008128628, 2008128629, 2008128630, 2008128631, 2008128632, 2008128633, 2008128634, 2008128635, 2008128636, 2008128637, 2008128638, 2008128639, 2008128640, 2008128641, 2008128642, 2008128643, 2008128644, 2008128645, 2008128646, 2008128647, 2008128648, 2008128649, 2008128650, 2008128651, 2008128652, 2008128653, 2008128654, 2008128655, 2008128656, 2008128657, 2008128658, 2008128659, 2008128660, 2008128661, 2008128662, 2008128663, 2008128664, 2008128665, 2008128666, 2008128667, 2008128668, 2008128669, 2008128670, 2008128671, 2008128672, 2008128673, 2008128674, 2008128675, 2008128676, 2008128677, 2008128678, 2008128679, 2008128680, 2008128681, 2008128682, 2008128683, 2008128684, 2008128685, 2008128686, 2008128687, 2008128688, 2008128689, 2008128690, 2008128691, 2008128692, 2008128693, 2008128694, 2008128695, 2008128696, 2008128697, 2008128698, 2008128699, 2008128700, 2008128701, 2008128702, 2008128703, 2008128704, 2008128705, 2008128706, 2008128707, 2008128708, 2008128709, 2008128710, 2008128711, 2008128712, 2008128713, 2008128714, 2008128715, 2008128716, 2008128717, 2008128718, 2008128719, 2008128720, 2008128721, 2008128722, 2008128723, 2008128724, 2008128725, 2008128726, 2008128727, 2008128728, 2008128729, 2008128730, 2008128731, 2008128732, 2008128733, 2008128734, 2008128735, 2008128736, 2008128737, 2008128738, 2008128739, 2008128740, 2008128741, 2008128742, 2008128743, 2008128744, 2008128745, 2008128746, 2008128747, 2008128748, 2008128749, 2008128750, 2008128751, 2008128752, 2008128753, 2008128754, 2008128755, 2008128756, 2008128757, 2008128758, 2008128759, 2008128760, 2008128761, 2008128762, 2008128763, 2008128764, 2008128765, 2008128766, 2008128767, 2008128768, 2008128769, 2008128770, 2008128771, 2008128772, 2008128773, 2008128774, 2008128775, 2008128776, 2008128777, 2008128778, 2008128779, 2008128780, 2008128781, 2008128782, 2008128783, 2008128784, 2008128785, 2008128786, 2008128787, 2008128788, 2008128789, 2008128790, 2008128791, 2008128792, 2008128793, 2008128794, 2008128795, 2008128796, 2008128797, 2008128798, 2008128799, 2008128800, 2008128801, 2008128802, 2008128803, 2008128804, 2008128805, 2008128806, 2008128807, 2008128808, 2008128809, 2008128810, 2008128811, 2008128812, 2008128813, 2008128814, 2008128815, 2008128816, 2008128817, 2008128818, 2008128819, 2008128820, 2008128821, 2008128822, 2008128823, 2008128824, 2008128825, 2008128826, 2008128827, 2008128828, 2008128829, 2008128830, 2008128831, 2008128832, 2008128833, 2008128834, 2008128835, 2008128836, 2008128837, 2008128838, 2008128839, 2008128840, 2008128841, 2008128842, 2008128843, 2008128844, 2008128845, 2008128846, 2008128847, 2008128848, 2008128849, 2008128850, 2008128851, 2008128852, 2008128853, 2008128854, 2008128855, 2008128856, 2008128857, 2008128858, 2008128859, 2008128860, 2008128861, 2008128862, 2008128863, 2008128864, 2008128865, 2008128866, 2008128867, 2008128868, 2008128869, 2008128870, 2008128871, 2008128872, 2008128873, 2008128874, 2008128875, 2008128876, 2008128877, 2008128878, 2008128879, 2008128880, 2008128881, 2008128882, 2008128883, 2008128884, 2008128885, 2008128886, 2008128887, 2008128888, 2008128889, 2008128890, 2008128891, 2008128892, 2008128893, 2008128894, 2008128895, 2008128896, 2008128897, 2008128898, 2008128899, 2008128900, 2008128901, 2008128902, 2008128903, 2008128904, 2008128905, 2008128906, 2008128907, 2008128908, 2008128909, 2008128910, 2008128911, 2008128912, 2008128913, 2008128914, 2008128915, 2008128916, 2008128917, 2008128918, 2008128919, 2008128920, 2008128921, 2008128922, 2008128923, 2008128924, 2008128925, 2008128926, 2008128927, 2008128928, 2008128929, 2008128930, 2008128931, 2008128932, 2008128933, 2008128934, 2008128935, 2008128936, 2008128937, 2008128938, 2008128939, 2008128940, 2008128941, 2008128942, 2008128943, 2008128944, 2008128945, 2008128946, 2008128947, 2008128948, 2008128949, 2008128950, 2008128951, 2008128952, 2008128953, 2008128954, 2008128955, 2008128956, 2008128957, 2008128958, 2008128959, 2008128960, 2008128961, 2008128962, 2008128963, 2008128964, 2008128965, 2008128966, 2008128967, 2008128968, 2008128969, 2008128970, 2008128971, 2008128972, 2008128973, 2008128974, 2008128975, 2008128976, 2008128977, 2008128978, 2008128979, 2008128980, 2008128981, 2008128982, 2008128983, 2008128984, 2008128985, 2008128986, 2008128987, 2008128988, 2008128989, 2008128990, 2008128991, 2008128992, 2008128993, 2008128994, 2008128995, 2008128996, 2008128997, 2008128998, 2008128999, 2008129000, 2008129001, 2008129002, 2008129003, 2008129004, 2008129005, 2008129006, 2008129007, 2008129008, 2008129009, 2008129010, 2008129011, 2008129012, 2008129013, 2008129014, 2008129015, 2008129016, 2008129017, 2008129018, 2008129019, 2008129020, 2008129021, 2008129022, 2008129023, 2008129024, 2008129025, 2008129026, 2008129027, 2008129028, 2008129029, 2008129030, 2008129031, 2008129032, 2008129033, 2008129034, 2008129035, 2008129036, 2008129037, 2008129038, 2008129039, 2008129040, 2008129041, 2008129042, 2008129043, 2008129044, 2008129045, 2008129046, 2008129047, 2008129048, 2008129049, 2008129050, 2008129051, 2008129052, 2008129053, 2008129054, 2008129055, 2008129056, 2008129057, 2008129058, 2008129059, 2008129060, 2008129061, 2008129062, 2008129063, 2008129064, 2008129065, 2008129066, 2008129067, 2008129068, 2008129069, 2008129070, 2008129071, 2008129072, 2008129073, 2008129074, 2008129075, 2008129076, 2008129077, 2008129078, 2008129079, 2008129080, 2008129081, 2008129082, 2008129083, 2008129084, 2008129085, 2008129086, 2008129087, 2008129088, 2008129089, 2008129090, 2008129091, 2008129092, 2008129093, 2008129094, 2008129095, 2008129096, 2008129097, 2008129098, 2008129099, 2008129100, 2008129101, 2008129102, 2008129103, 2008129104, 2008129105, 2008129106, 2008129107, 2008129108, 2008129109, 2008129110, 2008129111, 2008129112, 2008129113, 2008129114, 2008129115, 2008129116, 2008129117, 2008129118, 2008129119, 2008129120, 2008129121, 2008129122, 2008129123, 2008129124, 2008129125, 2008129126, 2008129127, 2008129128, 2008129129, 2008129130, 2008129131, 2008129132, 2008129133, 2008129134, 2008129135, 2008129136, 2008129137, 2008129138, 2008129139, 2008129140, 2008129141, 2008129142, 2008129143, 2008129144, 2008129145, 2008129146, 2008129147, 2008129148, 2008129149, 2008129150, 2008129151, 2008129152, 2008129153, 2008129154, 2008129155, 2008129156, 2008129157, 2008129158, 2008129159, 2008129160, 2008129161, 2008129162, 2008129163, 2008129164, 2008129165, 2008129166, 2008129167, 2008129168, 2008129169, 2008129170, 2008129171, 2008129172, 2008129173, 2008129174, 2008129175, 2008129176, 2008129177, 2008129178, 2008129179, 2008129180, 2008129181, 2008129182, 2008129183, 2008129184, 2008129185, 2008129186, 2008129187, 2008129188, 2008129189, 2008129190, 2008129191, 2008129192, 2008129193, 2008129194, 2008129195, 2008129196, 2008129197, 2008129198, 2008129199, 2008129200, 2008129201, 2008129202, 2008129203, 2008129204, 2008129205, 2008129206, 2008129207, 2008129208, 200

## Design 2386

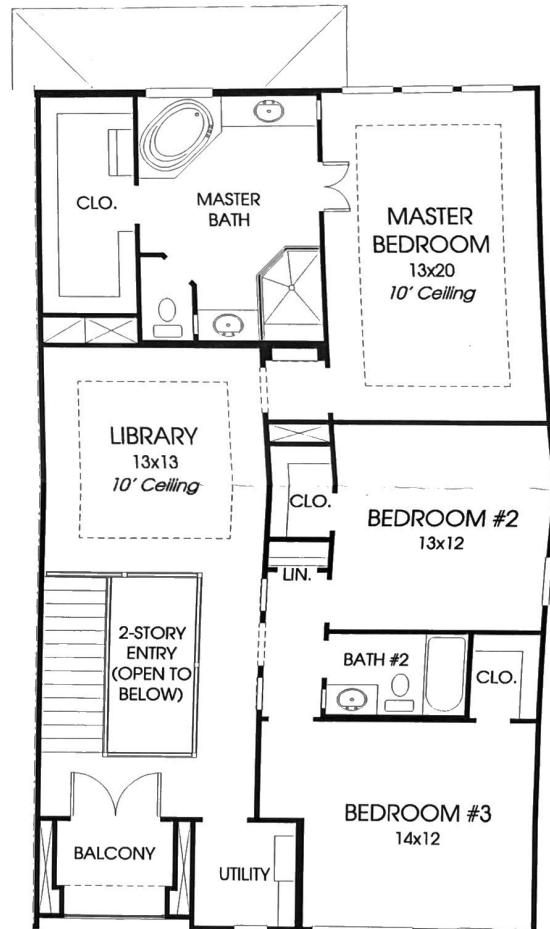
This home contains approximately 2,386 square feet.\*



*These fridges is 26 deep*



*This option requires a slab change.  
This option adds zero square feet.*



*Refused*

*36*

*72*

*(3x) Sport window with 8' in beh*

\*See Page 3 for Details and Disclaimers.  
© Perry Homes, LLC 2015

11/19/2015  
(Sienna Townhouse)

