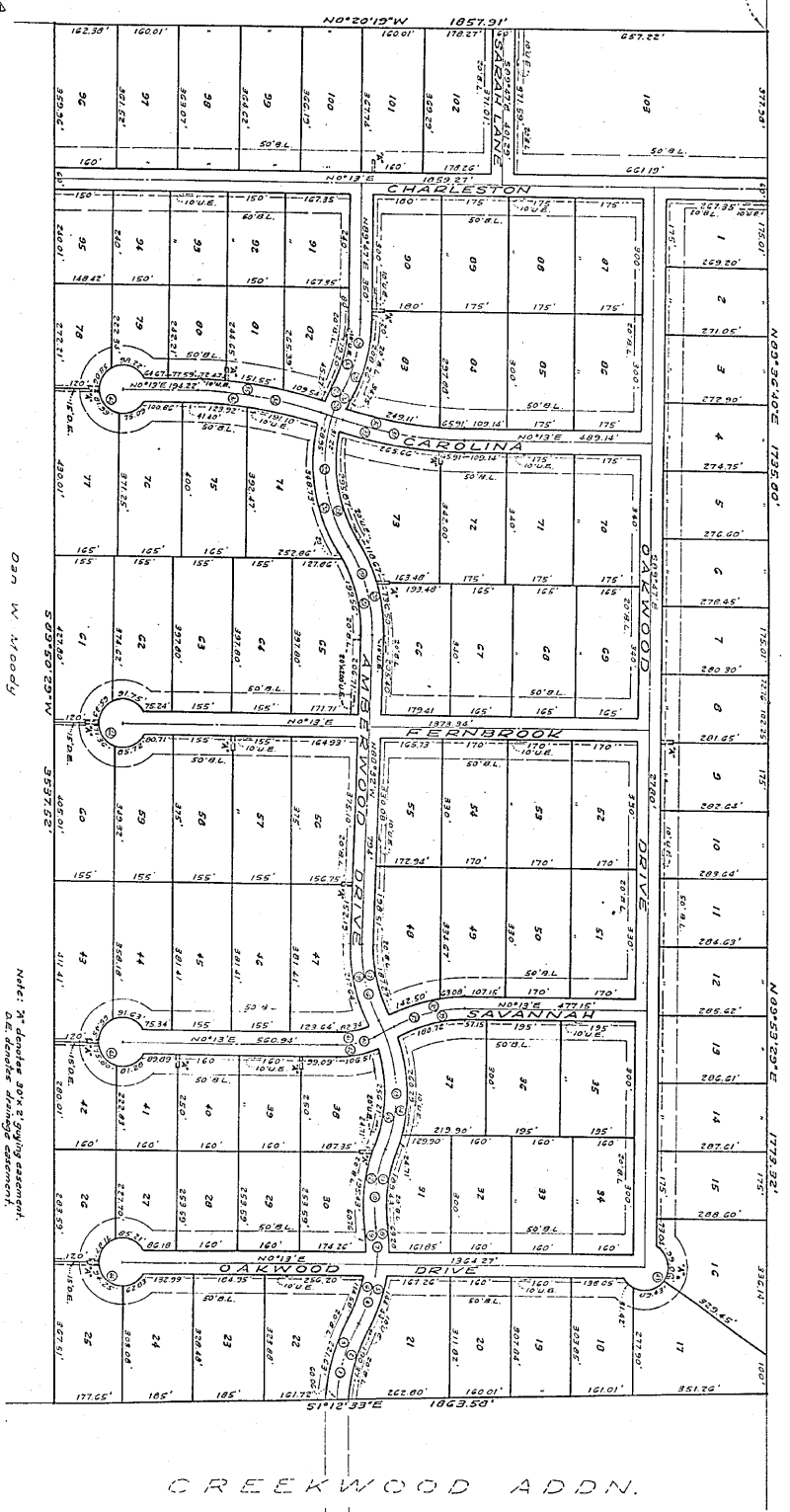


10-10-2019
 CON H.A. PETERS
 SURVEY A-434

King Ranch Inc.

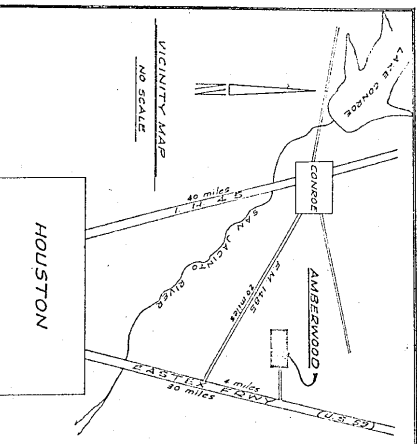
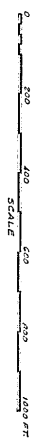
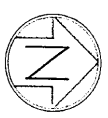


CURVE DATA L.

NO.	434.65	27°02'22"	206.01'
1	434.65	27°02'22"	206.01'
2	434.65	27°02'22"	206.01'
3	434.65	27°02'22"	206.01'
4	434.65	27°02'22"	206.01'
5	434.65	27°02'22"	206.01'
6	434.65	27°02'22"	206.01'
7	434.65	27°02'22"	206.01'
8	434.65	27°02'22"	206.01'
9	434.65	27°02'22"	206.01'
10	434.65	27°02'22"	206.01'
11	434.65	27°02'22"	206.01'
12	434.65	27°02'22"	206.01'
13	434.65	27°02'22"	206.01'
14	434.65	27°02'22"	206.01'
15	434.65	27°02'22"	206.01'
16	434.65	27°02'22"	206.01'
17	434.65	27°02'22"	206.01'
18	434.65	27°02'22"	206.01'
19	434.65	27°02'22"	206.01'
20	434.65	27°02'22"	206.01'
21	434.65	27°02'22"	206.01'
22	434.65	27°02'22"	206.01'
23	434.65	27°02'22"	206.01'
24	434.65	27°02'22"	206.01'
25	434.65	27°02'22"	206.01'
26	434.65	27°02'22"	206.01'
27	434.65	27°02'22"	206.01'
28	434.65	27°02'22"	206.01'
29	434.65	27°02'22"	206.01'
30	434.65	27°02'22"	206.01'
31	434.65	27°02'22"	206.01'
32	434.65	27°02'22"	206.01'
33	434.65	27°02'22"	206.01'
34	434.65	27°02'22"	206.01'
35	434.65	27°02'22"	206.01'
36	434.65	27°02'22"	206.01'
37	434.65	27°02'22"	206.01'
38	434.65	27°02'22"	206.01'
39	434.65	27°02'22"	206.01'
40	434.65	27°02'22"	206.01'
41	434.65	27°02'22"	206.01'
42	434.65	27°02'22"	206.01'
43	434.65	27°02'22"	206.01'
44	434.65	27°02'22"	206.01'
45	434.65	27°02'22"	206.01'
46	434.65	27°02'22"	206.01'
47	434.65	27°02'22"	206.01'
48	434.65	27°02'22"	206.01'
49	434.65	27°02'22"	206.01'
50	434.65	27°02'22"	206.01'
51	434.65	27°02'22"	206.01'
52	434.65	27°02'22"	206.01'
53	434.65	27°02'22"	206.01'
54	434.65	27°02'22"	206.01'
55	434.65	27°02'22"	206.01'
56	434.65	27°02'22"	206.01'
57	434.65	27°02'22"	206.01'
58	434.65	27°02'22"	206.01'
59	434.65	27°02'22"	206.01'
60	434.65	27°02'22"	206.01'
61	434.65	27°02'22"	206.01'
62	434.65	27°02'22"	206.01'
63	434.65	27°02'22"	206.01'
64	434.65	27°02'22"	206.01'
65	434.65	27°02'22"	206.01'
66	434.65	27°02'22"	206.01'
67	434.65	27°02'22"	206.01'
68	434.65	27°02'22"	206.01'
69	434.65	27°02'22"	206.01'
70	434.65	27°02'22"	206.01'
71	434.65	27°02'22"	206.01'
72	434.65	27°02'22"	206.01'
73	434.65	27°02'22"	206.01'
74	434.65	27°02'22"	206.01'
75	434.65	27°02'22"	206.01'
76	434.65	27°02'22"	206.01'
77	434.65	27°02'22"	206.01'
78	434.65	27°02'22"	206.01'
79	434.65	27°02'22"	206.01'
80	434.65	27°02'22"	206.01'
81	434.65	27°02'22"	206.01'
82	434.65	27°02'22"	206.01'
83	434.65	27°02'22"	206.01'
84	434.65	27°02'22"	206.01'
85	434.65	27°02'22"	206.01'
86	434.65	27°02'22"	206.01'
87	434.65	27°02'22"	206.01'
88	434.65	27°02'22"	206.01'
89	434.65	27°02'22"	206.01'
90	434.65	27°02'22"	206.01'
91	434.65	27°02'22"	206.01'
92	434.65	27°02'22"	206.01'
93	434.65	27°02'22"	206.01'
94	434.65	27°02'22"	206.01'
95	434.65	27°02'22"	206.01'
96	434.65	27°02'22"	206.01'
97	434.65	27°02'22"	206.01'
98	434.65	27°02'22"	206.01'
99	434.65	27°02'22"	206.01'
100	434.65	27°02'22"	206.01'

AMBERWOOD

A SUBDIVISION OF 15067 ACRES OF LAND
 IN THE H.A. PETERS SUR. A-434
 MONTGOMERY COUNTY, TEXAS.
 OWNER: AMBERWOOD INC.
 CONROE, TEXAS.



7740432

Cabinet B
 Sheet 93A

AMBERROOD
 A SUBDIVISION OF 150.67 ACRES IN THE
 H. A. PETERS SURV., A-434
 MONTGOMERY COUNTY, TEXAS
 OWNER: AMBERROOD, INC.
 CONROE, TEXAS

THE STATE OF TEXAS
 COUNTY OF MONTGOMERY

We, Charles Signor and Joanne Signor, President and Secretary respectively of Amberrood, Inc., owner of the property subdivided in the above and foregoing map of Amberrood, do hereby made subdivision according to the plat hereof, and on behalf of said Amberrood, Inc., easements thereon shown and designate said subdividing lines and located in the H. A. Peters Surv., A-434, Montgomery County, Texas, and dedicate to the public use, as such, the streets, lots, parks, for damages occasioned hereon forever; and do hereby waive any claim for damages occasioned hereon to such extent as may be necessary to bind ourselves, our heirs and assigns, to warrant and forever defend the title to the land so dedicated.

This is to certify that we, Charles Signor and Joanne Signor, President and Secretary respectively of Amberrood, Inc., owner of the property subdivided in the above and foregoing map of Amberrood, have complied or will comply with all the regulations heretofore on file in the Montgomery County Engineer and adopted by the Commissioners' Court of Montgomery County, Texas.

There is also dedicated for utilities, an unobstructed aerial easement five (5) feet wide from a plane twenty (20) feet above the ground upward located adjacent to all the easements shown hereon.

Further, all of the property subdivided in the above and foregoing map shall be restricted in its use, which restrictions shall run with the title to the property, and shall be enforceable at the instance of any citizen of Montgomery County or any citizen thereof by injunction as follows:

1. The drainage of septic tanks into road, street or other public ditches, either directly or indirectly is strictly prohibited.
2. Drainage structures under private driveways shall have a net drainage opening of not less than one square foot to permit the free flow of water without backwater and shall be a minimum of one and three quarters square feet (1 3/4) (18" diameter pipe culvert). Above ground drainage structures must be used for driveways and/or walks.

We hereby covenant and agree that all lots within the boundaries of this subdivision are for residential purposes unless otherwise noted.

IN TESTIMONY WHEREOF, the abovesaid, Inc. has caused these presents to be signed by Charles Signor, its President, and attested by its Secretary Joanne Signor, and its common seal hereunto affixed this, the _____ day of _____, 1976.

By: Charles Signor
 President
 Attest: Joanne Signor
 Secretary

THE STATE OF TEXAS
 COUNTY OF MONTGOMERY

BEFORE ME, the undersigned authority personally appeared Charles Signor, President of Amberrood, Inc., Secretary of Amberrood, Inc., known to me to be the persons whose names are subscribed to the foregoing instrument and acknowledged to me that they executed the same for the purposes and considerations therein expressed, and in presence of _____, _____, _____ and _____, all of whom are known to me and as the act and deed of said company.

GIVEN UNDER MY HAND AND SEAL OF OFFICE, this _____ day of _____, 1976.

Notary Public in and for
 Montgomery County, Texas
 Expiration date: _____



I, B. N. Cooper, County Engineer of Montgomery County, Texas, do hereby certify that the plat of this subdivision complies with all the existing rules and regulations of this office as adopted by the Montgomery County Commissioners' Court.

I further certify that the plat of this subdivision complies with requirements for internal subdivision drainage as adopted by Commissioners' Court, however, no certification is hereby given as to the effect of drainage from this subdivision on the interest of any person or any other area of said subdivision within the watershed.

This is to certify that I, Wallace S. Tuttle, a Registered Public Surveyor of the State of Texas, have plotted and marked the block corners, angle points and points of curve and thereon placed iron rods of minimum 5/8" diameter and 3 feet long, and that this plat correctly represents that survey made by me.

Wallace S. Tuttle
 Wallace S. Tuttle
 N. P. S. No. 1281

Approved by the Commissioners' Court of Montgomery County, Texas, this 15 day of April, 1976.

Commissioner, Precinct 1 A. B. Colby
 Commissioner, Precinct 2 _____

County Judge _____

Commissioner, Precinct 3 _____
 Commissioner, Precinct 4 _____

THE STATE OF TEXAS
 COUNTY OF MONTGOMERY

I, Roy Harris, Clerk of the County Court of Montgomery County, Texas, do hereby certify that the within instrument with its certificate of authentication was filed for registration in my office on _____, 1976, at _____ o'clock _____ M., in Cabinet _____, Sheet _____ of record of maps for said county.

WITNESS MY HAND AND SEAL OF OFFICE, at Conroe, Montgomery County, Texas, the day and date last above written.

Roy Harris, Clerk,
 Montgomery County Court
 Montgomery County, Texas

By: _____
 Deputy

