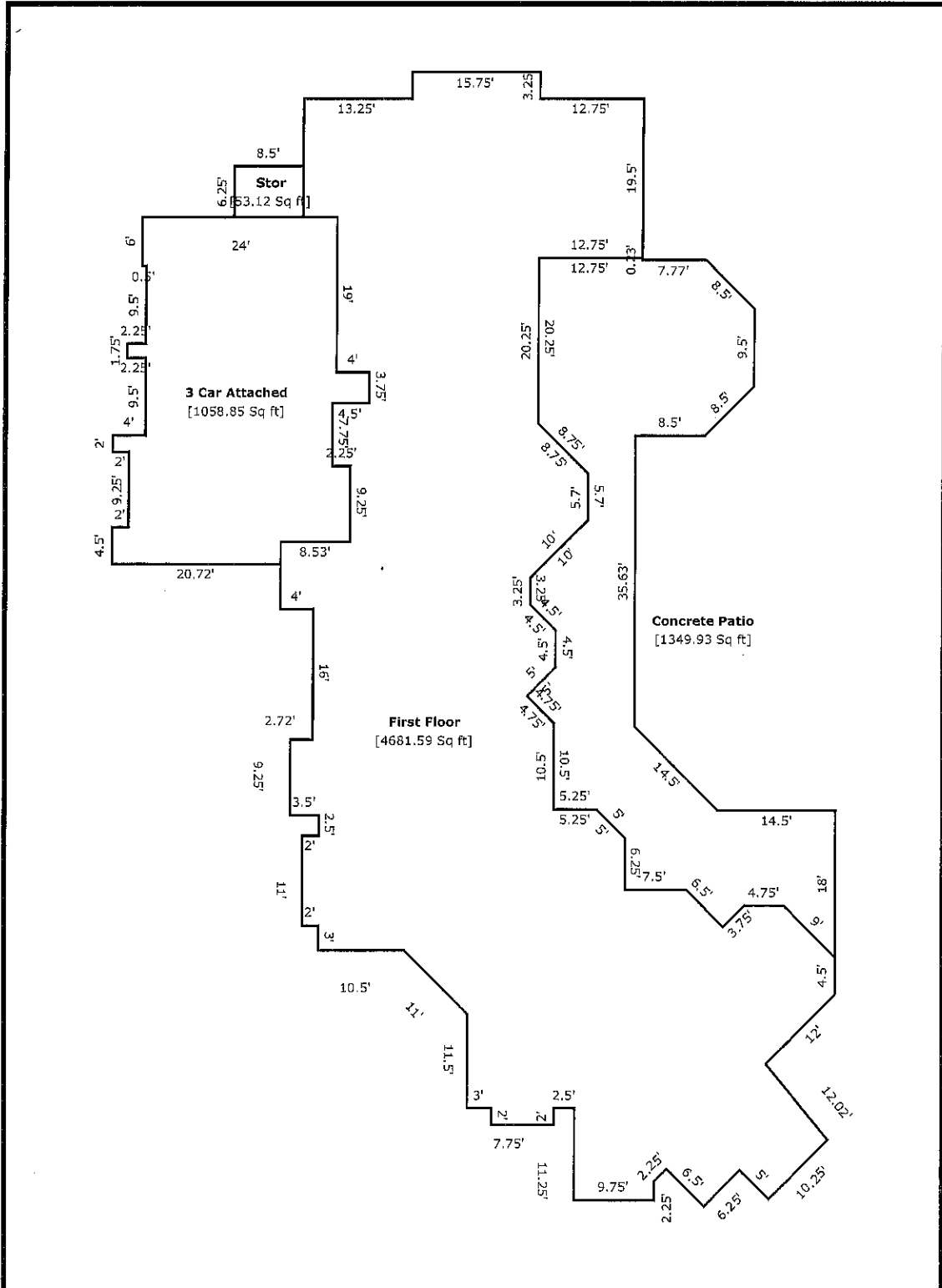


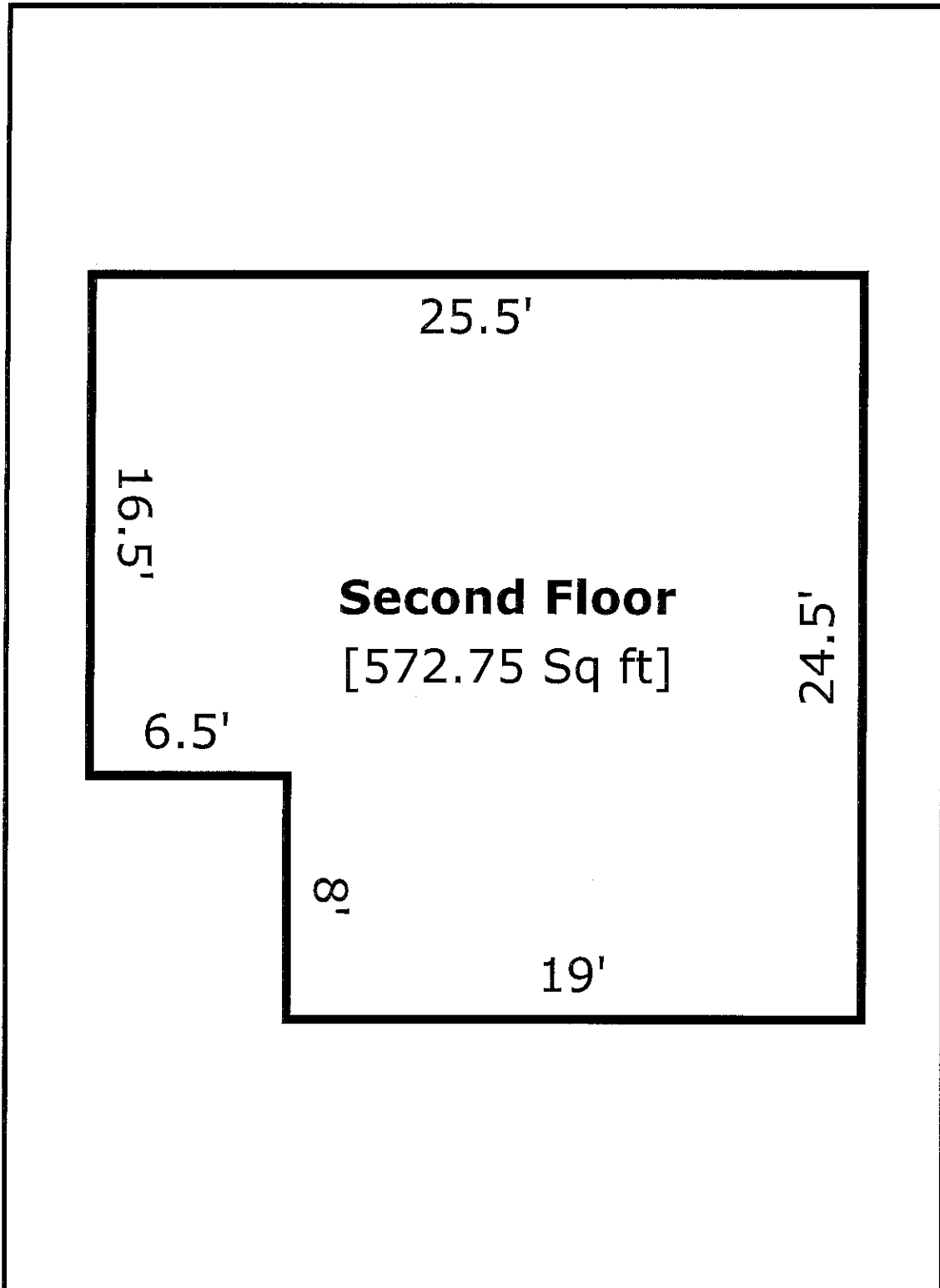
# Building Sketch (Page - 1)

Property Address	9527 Stonebridge Lake Dr		
City	Tomball	County	Harris
		State	TX
		Zip Code	77375
Lender			



**Building Sketch (Page - 2)**

Property Address	9527 Stonebridge Lake Dr						
City	Tomball	County	Harris	State	TX	Zip Code	77375
Lender							



## Building Sketch (Page - 3)

Property Address	9527 Stonebridge Lake Dr		
City	Tomball	County	Harris
		State	TX
		Zip Code	77375
Lender			

TOTAL Sketch by a la mode, Inc.

### Area Calculations Summary

Living Area	Area	Calculation Details																																																																																																																																																																																							
First Floor	4681.58 Sq ft	<table style="width: 100%; border-collapse: collapse;"> <tr><td>11 × 2</td><td style="text-align: right;">=</td><td>22</td></tr> <tr><td>7.75 × 2</td><td style="text-align: right;">=</td><td>15.5</td></tr> <tr><td>19.5 × 12.75</td><td style="text-align: right;">=</td><td>248.62</td></tr> <tr><td>15.75 × 3.25</td><td style="text-align: right;">=</td><td>51.19</td></tr> <tr><td>29 × 8.25</td><td style="text-align: right;">=</td><td>239.25</td></tr> <tr><td>29 × 6.25</td><td style="text-align: right;">=</td><td>181.25</td></tr> <tr><td>24.75 × 19</td><td style="text-align: right;">=</td><td>470.25</td></tr> <tr><td>20.75 × 3.75</td><td style="text-align: right;">=</td><td>77.81</td></tr> <tr><td>25.25 × 2.5</td><td style="text-align: right;">=</td><td>63.12</td></tr> <tr><td>25.25 × 5.25</td><td style="text-align: right;">=</td><td>132.56</td></tr> <tr><td>0.5 × 5.25 × 5.25</td><td style="text-align: right;">=</td><td>13.78</td></tr> <tr><td>28.25 × 0.94</td><td style="text-align: right;">=</td><td>26.48</td></tr> <tr><td>0.5 × 0.94 × 0.94</td><td style="text-align: right;">=</td><td>0.44</td></tr> <tr><td>29.19 × 5.7</td><td style="text-align: right;">=</td><td>166.37</td></tr> <tr><td>26.57 × 2.61</td><td style="text-align: right;">=</td><td>69.43</td></tr> <tr><td>0.5 × 2.61 × 2.61</td><td style="text-align: right;">=</td><td>3.41</td></tr> <tr><td>4.5 × 6.36</td><td style="text-align: right;">=</td><td>28.64</td></tr> <tr><td>0.5 × 6.36 × 6.36</td><td style="text-align: right;">=</td><td>20.25</td></tr> <tr><td>0.5 × 6.36 × 6.36</td><td style="text-align: right;">=</td><td>20.25</td></tr> <tr><td>32.35 × 2.75</td><td style="text-align: right;">=</td><td>88.97</td></tr> <tr><td>0.5 × 2.75 × 2.75</td><td style="text-align: right;">=</td><td>3.78</td></tr> <tr><td>1.71 × 30.65</td><td style="text-align: right;">=</td><td>52.35</td></tr> <tr><td>0.5 × 1.71 × 1.71</td><td style="text-align: right;">=</td><td>1.46</td></tr> <tr><td>30.65 × 3.25</td><td style="text-align: right;">=</td><td>99.6</td></tr> <tr><td>30.65 × 0.54</td><td style="text-align: right;">=</td><td>16.6</td></tr> <tr><td>0.5 × 0.54 × 0.54</td><td style="text-align: right;">=</td><td>0.15</td></tr> <tr><td>9.25 × 2.72</td><td style="text-align: right;">=</td><td>25.16</td></tr> <tr><td>25.25 × 0.78</td><td style="text-align: right;">=</td><td>19.7</td></tr> <tr><td>41.75 × 10.5</td><td style="text-align: right;">=</td><td>438.38</td></tr> <tr><td>41.75 × 7.78</td><td style="text-align: right;">=</td><td>324.74</td></tr> <tr><td>0.5 × 7.78 × 7.78</td><td style="text-align: right;">=</td><td>30.25</td></tr> <tr><td>61.03 × 7.23</td><td style="text-align: right;">=</td><td>441.5</td></tr> <tr><td>0.9 × 2.64</td><td style="text-align: right;">=</td><td>2.36</td></tr> <tr><td>0.5 × 2.64 × 2.64</td><td style="text-align: right;">=</td><td>3.49</td></tr> <tr><td>3.54 × 4.5</td><td style="text-align: right;">=</td><td>15.91</td></tr> <tr><td>0.5 × 3.54 × 3.54</td><td style="text-align: right;">=</td><td>6.25</td></tr> <tr><td>46.99 × 3.36</td><td style="text-align: right;">=</td><td>157.84</td></tr> <tr><td>0.5 × 3.36 × 3.36</td><td style="text-align: right;">=</td><td>5.64</td></tr> <tr><td>36.49 × 2.66</td><td style="text-align: right;">=</td><td>96.96</td></tr> <tr><td>47.74 × 2.59</td><td style="text-align: right;">=</td><td>123.81</td></tr> <tr><td>44.21 × 3.54</td><td style="text-align: right;">=</td><td>156.3</td></tr> <tr><td>0.5 × 3.54 × 3.54</td><td style="text-align: right;">=</td><td>6.25</td></tr> <tr><td>37.96 × 3.62</td><td style="text-align: right;">=</td><td>137.46</td></tr> <tr><td>3.88 × 4.6</td><td style="text-align: right;">=</td><td>17.83</td></tr> <tr><td>0.5 × 4.6 × 4.6</td><td style="text-align: right;">=</td><td>10.55</td></tr> <tr><td>4.75 × 2.65</td><td style="text-align: right;">=</td><td>12.6</td></tr> <tr><td>0.5 × 2.65 × 2.65</td><td style="text-align: right;">=</td><td>3.52</td></tr> <tr><td>15.88 × 14.58</td><td style="text-align: right;">=</td><td>231.42</td></tr> <tr><td>13.76 × 2.12</td><td style="text-align: right;">=</td><td>29.18</td></tr> <tr><td>0.5 × 2.12 × 2.12</td><td style="text-align: right;">=</td><td>2.25</td></tr> <tr><td>13.76 × 9.29</td><td style="text-align: right;">=</td><td>127.76</td></tr> <tr><td>0.5 × 7.63 × 9.29</td><td style="text-align: right;">=</td><td>35.46</td></tr> <tr><td>3.54 × 1.59</td><td style="text-align: right;">=</td><td>5.62</td></tr> <tr><td>0.5 × 1.59 × 1.59</td><td style="text-align: right;">=</td><td>1.27</td></tr> <tr><td>3.54 × 4.6</td><td style="text-align: right;">=</td><td>16.25</td></tr> <tr><td>0.5 × 4.6 × 4.6</td><td style="text-align: right;">=</td><td>10.56</td></tr> <tr><td>3.71 × 4.42</td><td style="text-align: right;">=</td><td>16.41</td></tr> <tr><td>0.5 × 4.42 × 4.42</td><td style="text-align: right;">=</td><td>9.77</td></tr> <tr><td>3.71 × 3.54</td><td style="text-align: right;">=</td><td>13.12</td></tr> <tr><td>0.5 × 3.54 × 3.54</td><td style="text-align: right;">=</td><td>6.25</td></tr> <tr><td>0.5 × 7.25 × 7.25</td><td style="text-align: right;">=</td><td>26.27</td></tr> </table>	11 × 2	=	22	7.75 × 2	=	15.5	19.5 × 12.75	=	248.62	15.75 × 3.25	=	51.19	29 × 8.25	=	239.25	29 × 6.25	=	181.25	24.75 × 19	=	470.25	20.75 × 3.75	=	77.81	25.25 × 2.5	=	63.12	25.25 × 5.25	=	132.56	0.5 × 5.25 × 5.25	=	13.78	28.25 × 0.94	=	26.48	0.5 × 0.94 × 0.94	=	0.44	29.19 × 5.7	=	166.37	26.57 × 2.61	=	69.43	0.5 × 2.61 × 2.61	=	3.41	4.5 × 6.36	=	28.64	0.5 × 6.36 × 6.36	=	20.25	0.5 × 6.36 × 6.36	=	20.25	32.35 × 2.75	=	88.97	0.5 × 2.75 × 2.75	=	3.78	1.71 × 30.65	=	52.35	0.5 × 1.71 × 1.71	=	1.46	30.65 × 3.25	=	99.6	30.65 × 0.54	=	16.6	0.5 × 0.54 × 0.54	=	0.15	9.25 × 2.72	=	25.16	25.25 × 0.78	=	19.7	41.75 × 10.5	=	438.38	41.75 × 7.78	=	324.74	0.5 × 7.78 × 7.78	=	30.25	61.03 × 7.23	=	441.5	0.9 × 2.64	=	2.36	0.5 × 2.64 × 2.64	=	3.49	3.54 × 4.5	=	15.91	0.5 × 3.54 × 3.54	=	6.25	46.99 × 3.36	=	157.84	0.5 × 3.36 × 3.36	=	5.64	36.49 × 2.66	=	96.96	47.74 × 2.59	=	123.81	44.21 × 3.54	=	156.3	0.5 × 3.54 × 3.54	=	6.25	37.96 × 3.62	=	137.46	3.88 × 4.6	=	17.83	0.5 × 4.6 × 4.6	=	10.55	4.75 × 2.65	=	12.6	0.5 × 2.65 × 2.65	=	3.52	15.88 × 14.58	=	231.42	13.76 × 2.12	=	29.18	0.5 × 2.12 × 2.12	=	2.25	13.76 × 9.29	=	127.76	0.5 × 7.63 × 9.29	=	35.46	3.54 × 1.59	=	5.62	0.5 × 1.59 × 1.59	=	1.27	3.54 × 4.6	=	16.25	0.5 × 4.6 × 4.6	=	10.56	3.71 × 4.42	=	16.41	0.5 × 4.42 × 4.42	=	9.77	3.71 × 3.54	=	13.12	0.5 × 3.54 × 3.54	=	6.25	0.5 × 7.25 × 7.25	=	26.27
11 × 2	=	22																																																																																																																																																																																							
7.75 × 2	=	15.5																																																																																																																																																																																							
19.5 × 12.75	=	248.62																																																																																																																																																																																							
15.75 × 3.25	=	51.19																																																																																																																																																																																							
29 × 8.25	=	239.25																																																																																																																																																																																							
29 × 6.25	=	181.25																																																																																																																																																																																							
24.75 × 19	=	470.25																																																																																																																																																																																							
20.75 × 3.75	=	77.81																																																																																																																																																																																							
25.25 × 2.5	=	63.12																																																																																																																																																																																							
25.25 × 5.25	=	132.56																																																																																																																																																																																							
0.5 × 5.25 × 5.25	=	13.78																																																																																																																																																																																							
28.25 × 0.94	=	26.48																																																																																																																																																																																							
0.5 × 0.94 × 0.94	=	0.44																																																																																																																																																																																							
29.19 × 5.7	=	166.37																																																																																																																																																																																							
26.57 × 2.61	=	69.43																																																																																																																																																																																							
0.5 × 2.61 × 2.61	=	3.41																																																																																																																																																																																							
4.5 × 6.36	=	28.64																																																																																																																																																																																							
0.5 × 6.36 × 6.36	=	20.25																																																																																																																																																																																							
0.5 × 6.36 × 6.36	=	20.25																																																																																																																																																																																							
32.35 × 2.75	=	88.97																																																																																																																																																																																							
0.5 × 2.75 × 2.75	=	3.78																																																																																																																																																																																							
1.71 × 30.65	=	52.35																																																																																																																																																																																							
0.5 × 1.71 × 1.71	=	1.46																																																																																																																																																																																							
30.65 × 3.25	=	99.6																																																																																																																																																																																							
30.65 × 0.54	=	16.6																																																																																																																																																																																							
0.5 × 0.54 × 0.54	=	0.15																																																																																																																																																																																							
9.25 × 2.72	=	25.16																																																																																																																																																																																							
25.25 × 0.78	=	19.7																																																																																																																																																																																							
41.75 × 10.5	=	438.38																																																																																																																																																																																							
41.75 × 7.78	=	324.74																																																																																																																																																																																							
0.5 × 7.78 × 7.78	=	30.25																																																																																																																																																																																							
61.03 × 7.23	=	441.5																																																																																																																																																																																							
0.9 × 2.64	=	2.36																																																																																																																																																																																							
0.5 × 2.64 × 2.64	=	3.49																																																																																																																																																																																							
3.54 × 4.5	=	15.91																																																																																																																																																																																							
0.5 × 3.54 × 3.54	=	6.25																																																																																																																																																																																							
46.99 × 3.36	=	157.84																																																																																																																																																																																							
0.5 × 3.36 × 3.36	=	5.64																																																																																																																																																																																							
36.49 × 2.66	=	96.96																																																																																																																																																																																							
47.74 × 2.59	=	123.81																																																																																																																																																																																							
44.21 × 3.54	=	156.3																																																																																																																																																																																							
0.5 × 3.54 × 3.54	=	6.25																																																																																																																																																																																							
37.96 × 3.62	=	137.46																																																																																																																																																																																							
3.88 × 4.6	=	17.83																																																																																																																																																																																							
0.5 × 4.6 × 4.6	=	10.55																																																																																																																																																																																							
4.75 × 2.65	=	12.6																																																																																																																																																																																							
0.5 × 2.65 × 2.65	=	3.52																																																																																																																																																																																							
15.88 × 14.58	=	231.42																																																																																																																																																																																							
13.76 × 2.12	=	29.18																																																																																																																																																																																							
0.5 × 2.12 × 2.12	=	2.25																																																																																																																																																																																							
13.76 × 9.29	=	127.76																																																																																																																																																																																							
0.5 × 7.63 × 9.29	=	35.46																																																																																																																																																																																							
3.54 × 1.59	=	5.62																																																																																																																																																																																							
0.5 × 1.59 × 1.59	=	1.27																																																																																																																																																																																							
3.54 × 4.6	=	16.25																																																																																																																																																																																							
0.5 × 4.6 × 4.6	=	10.56																																																																																																																																																																																							
3.71 × 4.42	=	16.41																																																																																																																																																																																							
0.5 × 4.42 × 4.42	=	9.77																																																																																																																																																																																							
3.71 × 3.54	=	13.12																																																																																																																																																																																							
0.5 × 3.54 × 3.54	=	6.25																																																																																																																																																																																							
0.5 × 7.25 × 7.25	=	26.27																																																																																																																																																																																							
Second Floor	572.75 Sq ft	<table style="width: 100%; border-collapse: collapse;"> <tr><td>24.5 × 19</td><td style="text-align: right;">=</td><td>465.5</td></tr> <tr><td>6.5 × 16.5</td><td style="text-align: right;">=</td><td>107.25</td></tr> </table>	24.5 × 19	=	465.5	6.5 × 16.5	=	107.25																																																																																																																																																																																	
24.5 × 19	=	465.5																																																																																																																																																																																							
6.5 × 16.5	=	107.25																																																																																																																																																																																							
<b>Total Living Area (Rounded):</b>	<b>5254 Sq ft</b>																																																																																																																																																																																								
<b>Non-Living Area</b>																																																																																																																																																																																									
3 Car Attached	1058.85 Sq ft	<table style="width: 100%; border-collapse: collapse;"> <tr><td>1.75 × 2.25</td><td style="text-align: right;">=</td><td>3.94</td></tr> <tr><td>3.75 × 4</td><td style="text-align: right;">=</td><td>15</td></tr> <tr><td>4.5 × 2</td><td style="text-align: right;">=</td><td>9</td></tr> <tr><td>2 × 2</td><td style="text-align: right;">=</td><td>4</td></tr> <tr><td>24 × 6</td><td style="text-align: right;">=</td><td>144</td></tr> <tr><td>23.5 × 16.75</td><td style="text-align: right;">=</td><td>393.62</td></tr> <tr><td>9.25 × 2.25</td><td style="text-align: right;">=</td><td>20.81</td></tr> <tr><td>17 × 6.28</td><td style="text-align: right;">=</td><td>106.76</td></tr> <tr><td>16.72 × 4</td><td style="text-align: right;">=</td><td>66.88</td></tr> <tr><td>15.75 × 18.72</td><td style="text-align: right;">=</td><td>294.84</td></tr> </table>	1.75 × 2.25	=	3.94	3.75 × 4	=	15	4.5 × 2	=	9	2 × 2	=	4	24 × 6	=	144	23.5 × 16.75	=	393.62	9.25 × 2.25	=	20.81	17 × 6.28	=	106.76	16.72 × 4	=	66.88	15.75 × 18.72	=	294.84																																																																																																																																																									
1.75 × 2.25	=	3.94																																																																																																																																																																																							
3.75 × 4	=	15																																																																																																																																																																																							
4.5 × 2	=	9																																																																																																																																																																																							
2 × 2	=	4																																																																																																																																																																																							
24 × 6	=	144																																																																																																																																																																																							
23.5 × 16.75	=	393.62																																																																																																																																																																																							
9.25 × 2.25	=	20.81																																																																																																																																																																																							
17 × 6.28	=	106.76																																																																																																																																																																																							
16.72 × 4	=	66.88																																																																																																																																																																																							
15.75 × 18.72	=	294.84																																																																																																																																																																																							
Stor	53.12 Sq ft	<table style="width: 100%; border-collapse: collapse;"> <tr><td>6.25 × 8.5</td><td style="text-align: right;">=</td><td>53.12</td></tr> </table>	6.25 × 8.5	=	53.12																																																																																																																																																																																				
6.25 × 8.5	=	53.12																																																																																																																																																																																							

## Building Sketch (Page - 4)

Property Address	9527 Stonebridge Lake Dr		
City	Tomball	County	Harris
		State	TX
		Zip Code	77375
Lender			

TOTAL Sketch by a la mode, Inc.

### Area Calculations Summary

Non-living Area		
Concrete Patio	1349.93 Sq ft	
		$0.5 \times 6.36 \times 6.36 = 20.25$
		$11.64 \times 6.36 = 74.05$
		$11.64 \times 4.75 = 55.27$
		$0.5 \times 6.01 \times 6.01 = 18.06$
		$0.5 \times 6.01 \times 6.01 = 18.06$
		$9.5 \times 6.01 = 57.1$
		$0.5 \times 2.65 \times 2.65 = 3.52$
		$11.64 \times 2.65 = 30.85$
		$0.5 \times 0.73 \times 0.73 = 0.27$
		$13.55 \times 0.73 = 9.95$
		$0.5 \times 3.86 \times 3.86 = 7.46$
		$0.5 \times 3.86 \times 3.86 = 7.46$
		$3.86 \times 9.69 = 37.43$
		$21.52 \times 7.77 = 167.12$
		$0.5 \times 6.39 \times 6.39 = 20.42$
		$13.55 \times 6.39 = 86.62$
		$21.75 \times 0.73 = 15.97$
		$77.32 \times 1.11 = 85.73$
		$0.5 \times 3.54 \times 3.54 = 6.25$
		$67.53 \times 3.54 = 238.77$
		$67.53 \times 1.18 = 79.97$
		$0.5 \times 3.89 \times 3.89 = 7.56$
		$31.51 \times 3.89 = 122.54$
		$0.5 \times 0.18 \times 0.18 = 0.02$
		$17.22 \times 0.18 = 3.04$
		$0.5 \times 6.72 \times 3.36 = 11.28$
		$0.5 \times 3.18 \times 3.18 = 5.06$
		$0.5 \times 3.18 \times 3.18 = 5.06$
		$3.25 \times 3.18 = 10.34$
		$0.5 \times 6.19 \times 6.19 = 19.14$
		$20.25 \times 6.19 = 125.29$