

1	N 70° 00' 00" E	114.61	114.61
2	N 50° 00' 00" E	528.79	528.79
3	N 20° 00' 00" E	114.61	114.61
4	N 70° 00' 00" E	114.61	114.61
5	N 50° 00' 00" E	528.79	528.79
6	N 20° 00' 00" E	114.61	114.61
7	N 70° 00' 00" E	114.61	114.61
8	N 50° 00' 00" E	528.79	528.79
9	N 20° 00' 00" E	114.61	114.61
10	N 70° 00' 00" E	114.61	114.61
11	N 50° 00' 00" E	528.79	528.79
12	N 20° 00' 00" E	114.61	114.61
13	N 70° 00' 00" E	114.61	114.61
14	N 50° 00' 00" E	528.79	528.79

Mag Decl. N 0° 00' 30" E  
 Revised 6-2-76

Flood markers

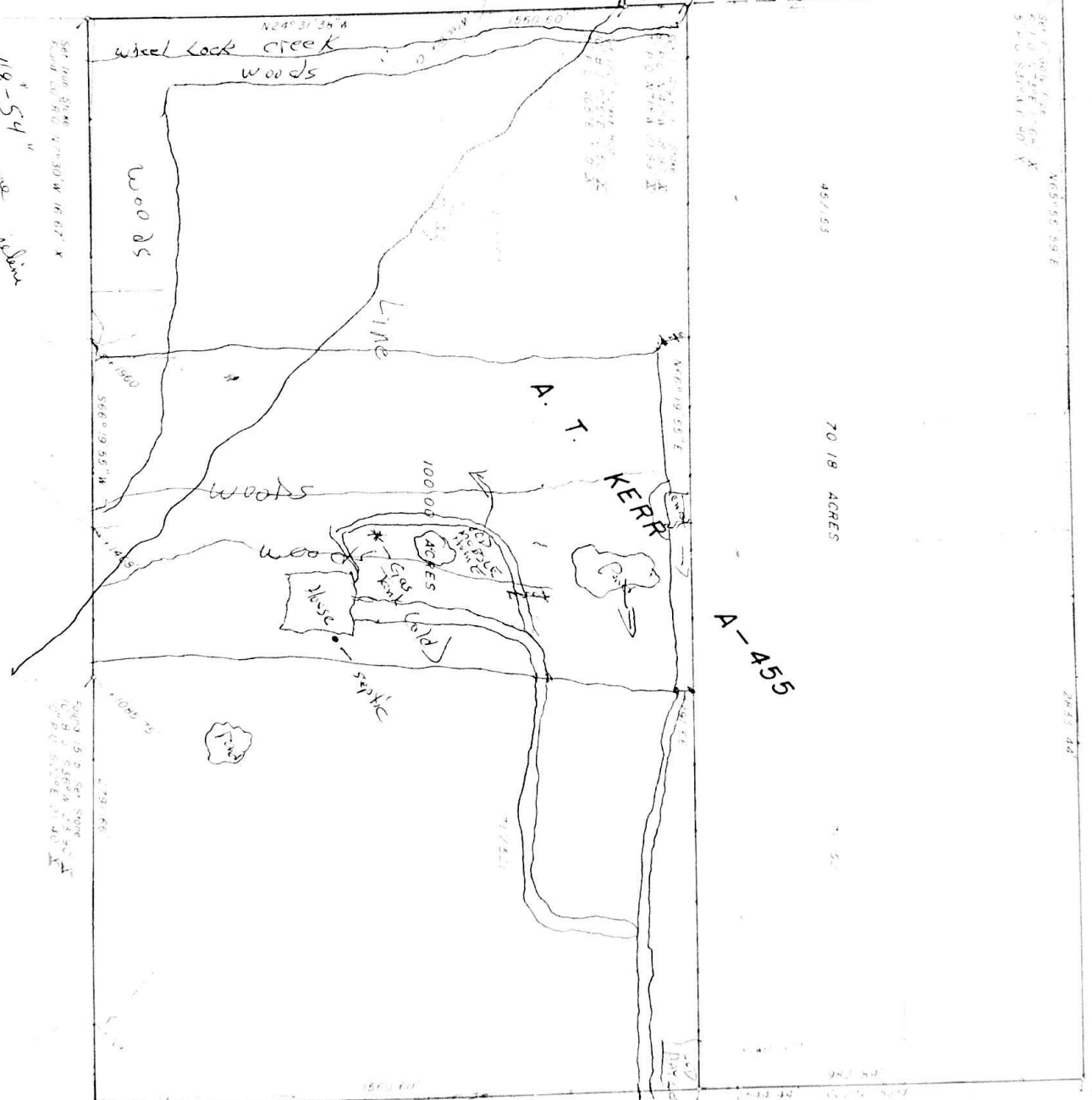
S 1/4 Sec 10, T 20 N, R 10 E  
 N 20° 00' 00" E 115.00'  
 S 0° 00' 00" W 21.19' X  
 S 89° 59' 59" E 14.00' X

S 1/4 Sec 10, T 20 N, R 10 E  
 S 10° 00' 00" E 100.00' X  
 S 10° 00' 00" E 100.00' X

S 1/4 Sec 10, T 20 N, R 10 E  
 S 10° 00' 00" E 100.00' X  
 S 10° 00' 00" E 100.00' X

48'-54"   
 high pressure   
 natural gas pipeline   
 200'

375/348   
 N 70° E   
 Also 1 Runners



PROPERTY OF