

CURVE	RADIUS	ARC	CHORD	CHORD BRG	DELTA	TANGENT
C2	170.00'	261.50'	236.47'	N 47°00'19" W	88°08'04"	164.55'
C3	20.00'	26.30'	24.45'	S 51°15'09" E	75°21'00"	15.44'
C4	20.00'	31.42'	28.28'	S 46°04'21" E	90°00'00"	20.00'
C5	160.00'	88.87'	87.73'	N 64°02'01" W	31°49'29"	45.61'
C6	20.00'	5.11'	5.10'	S 06°15'09" W	14°39'00"	2.57'
C7	330.00'	540.77'	482.26'	N 45°52'21" E	93°53'24"	353.20'
C8	330.00'	128.38'	127.57'	N 10°04'21" E	22°17'25"	65.01'
C9	330.00'	145.33'	144.16'	N 33°50'04" E	25°14'00"	73.86'
C10	330.00'	156.89'	155.42'	N 79°11'52" E	27°14'23"	79.96'
C11	20.00'	31.42'	28.28'	S 47°49'03" W	90°00'00"	20.00'
C12	270.00'	219.70'	213.69'	S 20°29'37" E	46°37'20"	116.34'
C13	270.00'	52.78'	52.69'	S 02°46'57" E	11°12'00"	26.47'
C14	270.00'	166.92'	164.28'	S 26°05'37" E	35°25'20"	86.23'
C15	20.00'	31.42'	28.28'	S 88°48'17" E	90°00'00"	20.00'
C16	20.00'	26.36'	24.49'	N 08°26'03" E	75°31'21"	15.49'
C17	60.00'	267.62'	94.85'	N 81°32'55" W	255°33'26"	77.41'
C18	60.00'	79.09'	73.48'	S 08°26'03" W	75°31'21"	46.48'
C19	60.00'	188.53'	120.00'	N 43°47'14" W	180°02'05"	198.197' 88'
C20	60.00'	267.55'	94.89'	S 06°01'34" E	255°29'16"	77.51'
C21	60.00'	4.90'	4.90'	N 48°34'05" E	4°40'33"	2.45'
C22	60.00'	88.31'	80.55'	S 86°55'42" E	84°19'54"	54.34'
C23	60.00'	95.29'	85.58'	S 00°44'02" W	90°59'33"	61.05'
C24	60.00'	79.05'	73.46'	S 83°58'26" W	75°29'16"	46.45'
C25	20.00'	26.36'	24.49'	N 83°57'24" E	75°31'21"	15.49'
C26	20.00'	31.42'	28.28'	N 01°11'43" E	90°00'00"	20.00'
C27	330.00'	268.52'	261.18'	S 20°29'37" E	46°37'20"	142.20'
C28	330.00'	215.86'	212.03'	S 25°03'56" E	37°28'41"	111.95'
C29	330.00'	52.67'	52.61'	S 01°45'16" E	9°08'39"	26.39'
C30	20.00'	31.42'	28.28'	N 42°10'57" W	90°00'00"	20.00'
C31	330.00'	318.86'	306.60'	S 59°30'05" E	55°21'44"	173.12'
C32	330.00'	105.38'	104.93'	S 78°02'05" E	18°17'44"	53.14'
C33	330.00'	178.88'	176.70'	S 53°21'27" E	31°03'31"	91.70'
C34	330.00'	34.60'	34.59'	S 34°49'27" E	6°00'29"	17.32'
C35	20.00'	17.91'	17.32'	N 57°28'45" W	51°19'04"	9.61'
C36	60.00'	27.32'	27.08'	S 70°05'44" E	26°05'05"	13.90'
C37	20.00'	19.47'	18.71'	N 84°56'20" W	55°46'16"	10.58'
C38	20.00'	19.47'	18.71'	N 39°17'24" E	55°46'16"	10.58'
C39	60.00'	196.97'	119.70'	S 74°32'56" E	188°05'35"	848.13'
C40	60.00'	102.07'	90.20'	N 60°08'13" E	97°27'54"	68.37'
C41	60.00'	46.70'	45.53'	S 48°49'54" E	44°35'52"	24.61'
C42	60.00'	10.01'	10.00'	S 21°45'09" E	9°33'37"	5.02'
C43	60.00'	38.19'	37.55'	S 01°15'45" W	36°28'12"	19.77'
C44	20.00'	17.91'	17.32'	S 06°09'41" E	51°19'04"	9.61'
C45	270.00'	260.89'	250.86'	S 59°30'05" E	55°21'44"	141.64'
C46	270.00'	130.44'	129.18'	S 45°39'39" E	27°40'52"	66.52'
C47	270.00'	130.44'	129.18'	S 73°20'31" E	27°40'52"	66.52'
C48	270.00'	442.45'	394.58'	N 45°52'21" E	93°53'24"	288.98'
C49	20.00'	31.42'	28.28'	N 46°04'21" W	90°00'00"	20.00'
C50	230.00'	239.04'	228.42'	N 61°17'56" W	59°32'50"	131.58'
C51	230.00'	147.50'	144.99'	N 72°42'00" W	36°44'41"	76.39'
C52	230.00'	91.53'	90.93'	N 42°55'36" W	22°48'09"	46.38'
C53	270.00'	240.89'	232.98'	N 57°05'04" W	51°07'06"	129.13'
C54	20.00'	31.42'	28.28'	S 52°21'22" W	90°00'00"	20.00'
C55	180.00'	97.10'	95.92'	S 22°48'35" W	30°54'25"	49.76'
C56	180.00'	215.34'	202.72'	S 72°32'05" W	68°32'36"	122.66'
C57	180.00'	118.78'	116.62'	S 57°10'05" E	37°48'36"	61.65'
C58	180.00'	96.55'	95.40'	N 88°33'37" W	30°44'00"	49.47'
C59	330.00'	169.60'	167.74'	N 58°28'15" W	29°26'45"	86.71'
C60	330.00'	112.49'	111.94'	N 63°25'43" W	19°31'49"	56.79'
C61	330.00'	57.11'	57.04'	N 48°42'20" W	9°54'56"	28.63'
C62	330.00'	106.79'	106.33'	N 34°28'38" W	18°32'30"	53.87'
C63	180.00'	223.66'	209.54'	N 10°23'23" E	71°11'32"	128.85'
C64	180.00'	115.43'	113.46'	N 06°50'07" E	36°44'31"	59.78'
C65	180.00'	108.23'	106.61'	N 28°45'39" E	34°27'01"	55.81'
C66	20.00'	32.39'	28.96'	N 00°24'35" W	92°47'29"	21.00'
C67	270.00'	188.66'	184.84'	N 66°49'22" E	40°02'05"	98.36'
C68	20.00'	30.44'	27.59'	N 89°35'25" E	87°12'31"	19.05'
C69	330.00'	206.41'	203.07'	S 64°43'29" E	35°50'18"	106.71'
C70	330.00'	94.20'	93.88'	S 54°58'58" E	16°21'17"	47.42'
C71	330.00'	112.22'	111.68'	S 72°54'07" E	19°29'01"	56.66'
C72	20.00'	31.42'	28.28'	S 37°38'38" E	90°00'00"	20.00'
C73	120.00'	64.73'	63.95'	S 22°48'35" W	30°54'25"	33.17'
C74	120.00'	143.56'	135.15'	S 72°32'05" W	68°32'36"	81.77'
C75	270.00'	138.76'	137.24'	N 58°28'15" W	29°26'45"	70.95'
C76	270.00'	87.37'	86.99'	N 34°28'38" W	18°32'30"	44.07'
C77	120.00'	149.10'	139.70'	N 10°23'23" E	71°11'32"	85.90'
C78	105.00'	38.01'	37.80'	N 57°52'35" E	20°44'32"	19.22'
C79	104.96'	79.44'	77.55'	N 24°49'58" E	43°21'42"	41.73'
C80	20.00'	17.91'	17.32'	S 67°30'04" W	51°19'04"	9.61'
C81	60.00'	295.98'	75.00'	N 03°09'36" E	282°38'08"	48.04'
C82	60.00'	70.19'	66.26'	S 75°21'22" W	67°01'40"	39.73'
C83	60.00'	72.89'	68.49'	N 36°19'47" W	69°36'03"	41.70'
C84	60.00'	94.25'	84.85'	N 43°28'15" E	90°00'00"	60.00'
C85	60.00'	58.65'	56.34'	S 63°31'33" E	56°00'25"	31.91'
C86	20.00'	17.91'	17.32'	S 61°10'52" E	51°19'04"	9.61'
C87	330.00'	230.58'	225.92'	S 66°49'22" E	40°02'05"	120.22'
C88	330.00'	61.02'	60.93'	S 81°32'34" E	10°35'40"	30.60'

C89	330.00'	112.43'	111.88'	S 66°29'08" E	19°31'12"	56.76'
C90	270.00'	168.88'	166.14'	S 64°43'29" E	35°50'18"	87.31'
C91	330.00'	294.42'	284.75'	S 57°05'04" E	51°07'06"	157.82'
C92	330.00'	28.50'	28.49'	S 80°10'10" E	4°56'55"	14.26'
C93	330.00'	124.30'	123.57'	S 66°54'15" E	21°34'54"	62.90'
C94	330.00'	113.87'	113.31'	S 46°13'40" E	19°46'16"	57.51'
C95	330.00'	27.74'	27.74'	S 33°56'02" E	4°49'01"	13.88'
C96	170.00'	176.68'	168.84'	S 61°17'56" E	59°32'50"	97.26'
C97	20.00'	31.42'	28.28'	N 43°55'39" E	90°00'00"	20.00'
C98	95.00'	71.87'	70.17'	S 24°49'58" W	43°20'45"	37.75'
C99	95.00'	36.05'	35.83'	S 57°22'36" W	21°44'30"	18.24'
C100	330.00'	110.16'	109.65'	N 56°00'52" E	19°07'37"	55.60'
C101	270.00'	404.78'	367.93'	S 41°52'35" W	85°53'52"	251.33'
C102	270.00'	37.66'	37.63'	S 88°49'11" W	7°59'32"	18.86'
C103	330.00'	57.14'	57.06'	S 51°45'56" E	9°55'12"	28.64'

RECORDED IN CABINET **F**, SLIDE **273A** OF THE PLAT RECORDS OF SMITH COUNTY, TEXAS. DATE **8-31-21**

202125 FP Unit 1 SH 2.dwg

NO.	DATE	REVISIONS
2	OF	2
SHEET NO.		
CONTRACT NO. 202125		

Final Plat Showing
Veritatis Splendor
78 Lots - 204.0 Acres
Smith County, Texas

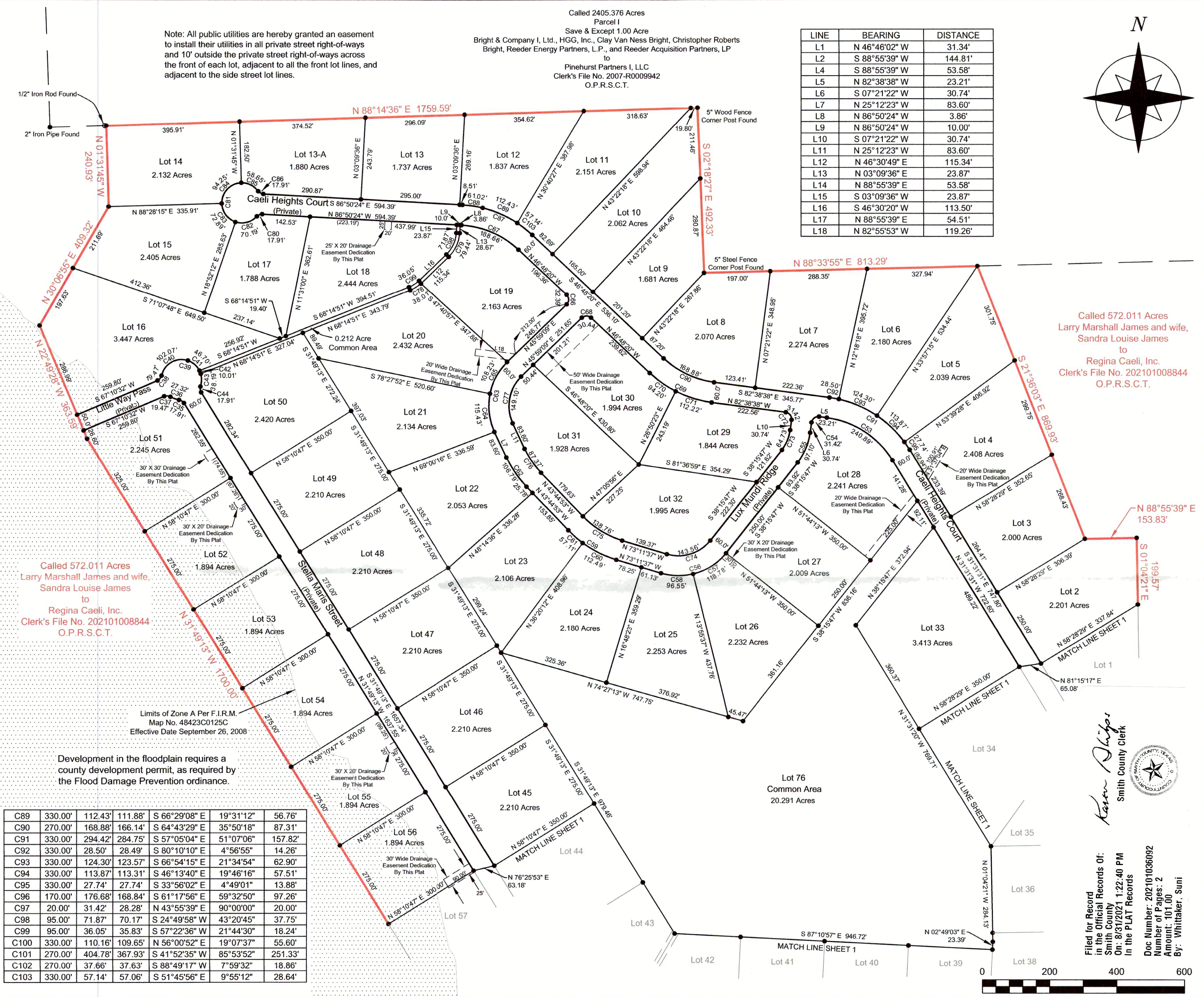
Kilgore & Company, Inc.
www.kilgore.com

6712 Paluxy Drive
Tyler, Texas 75703
(903)581-7800
Fax (903)581-3756

SURVEYING
PLANNING
MAPPING
TBPLS FIRM NO. 10044500



DESIGNED BY: R.A.B.
DRAWN BY: R.T.W.
CHECKED BY: K.L.K.
DATE: July 21, 2021
SCALE: 1" = 200'



LINE	BEARING	DISTANCE
L1	N 46°46'02" W	31.34'
L2	S 88°55'39" W	144.81'
L4	S 88°55'39" W	53.58'
L5	N 82°38'38" W	23.21'
L6	S 07°21'22" W	30.74'
L7	N 25°12'23" W	83.60'
L8	N 86°50'24" W	3.86'
L9	N 86°50'24" W	10.00'
L10	S 07°21'22" W	30.74'
L11	N 25°12'23" W	83.60'
L12	N 46°30'49" E	115.34'
L13	N 03°09'36" E	23.87'
L14	N 88°55'39" E	53.58'
L15	S 03°09'36" W	23.87'
L16	S 46°30'20" W	113.50'
L17	N 88°55'39" E	54.51'
L18	N 82°55'53" W	119.26'

Called 572.011 Acres
Larry Marshall James and wife,
Sandra Louise James
to
Regina Caeli, Inc.
Clerk's File No. 202101008844
O.P.R.S.C.T.

Karen Shipps
Smith County Clerk

Filed for Record in the Official Records of Smith County, Texas On: 8/31/2021 1:22:40 PM In the PLAT Records
Doc Number: 202101036092
Number of Pages: 2
Amount: 101.00
By: Whittaker, Suni

