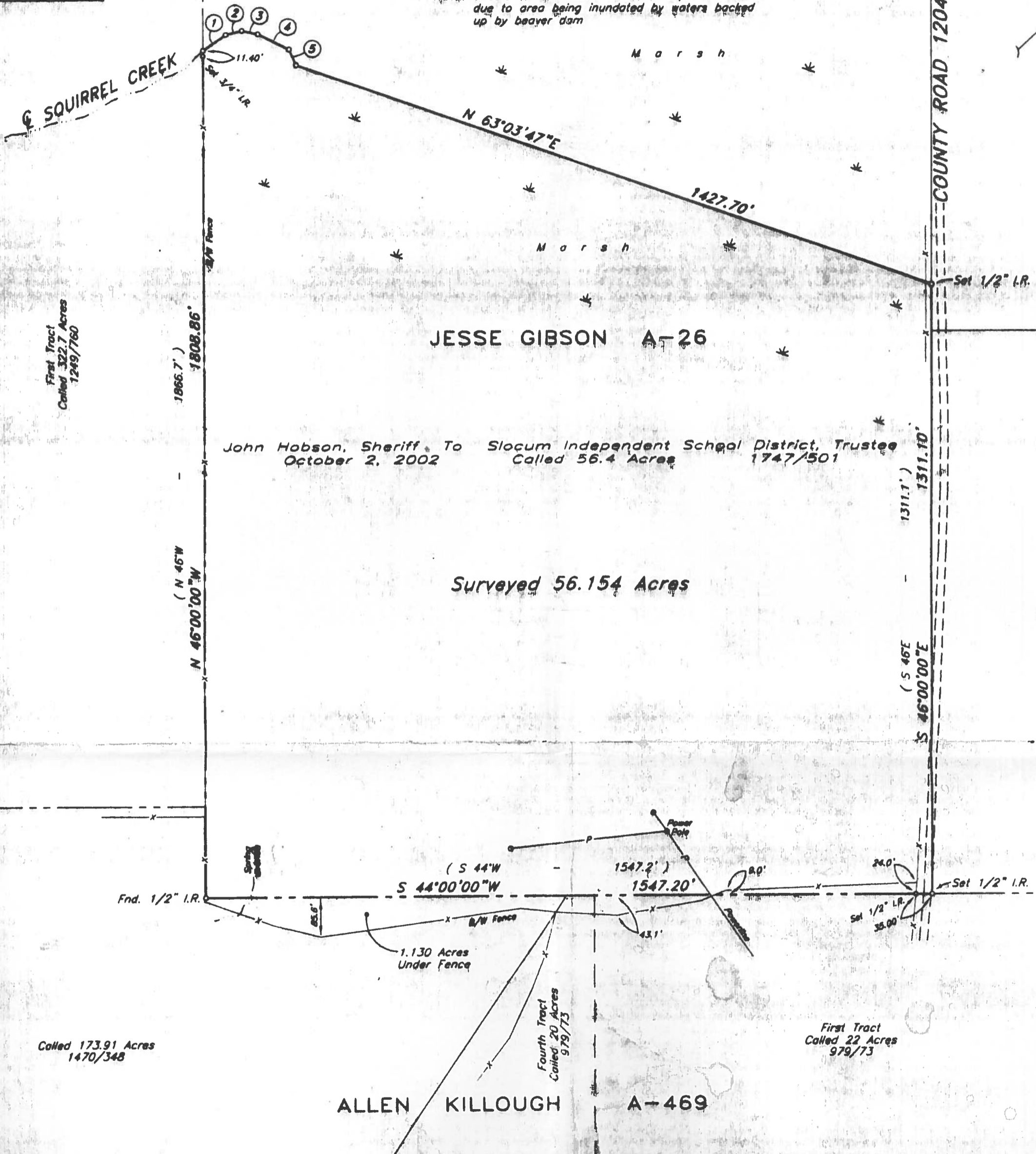


CREEK MEANDERS	
RING	LENGTH
10'42"E	59.24
16'25"E	35.35
10'49"E	34.87
19'32"E	74.15
17'42"E	36.34

Called 55.8 Acres
65/614

NOTE: Unable to determine center of Squirrel Creek due to area being inundated by waters backed up by beaver dam



Called 173.91 Acres
1470/348

First Tract
Called 22 Acres
979/73

ALLEN KILLOUGH A-469

Distances in parentheses are called.

Based on the Southwest line of the 56.4 acre tract in
19 of the Anderson County Official Public Records. Called N 46"W