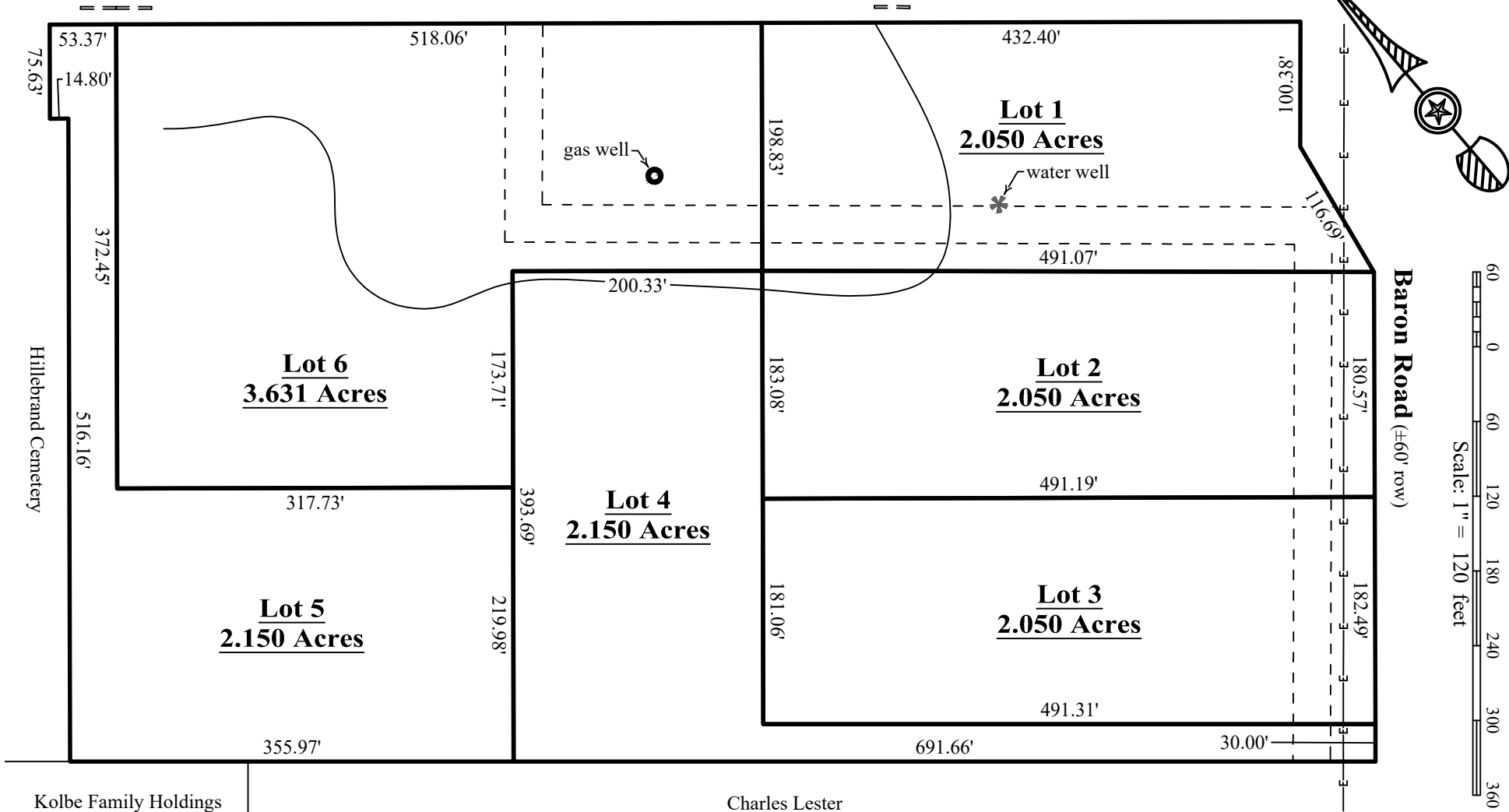


F M Hwy 159 (100' row)



Kolbe Family Holdings

Charles Lester

14.078 acres total

6 lots ranging from 2.05 acres to 3.631 acres

2 flag lots

1 existing gas well, well pad and pipeline

1 existing water well



Preliminary plat of NearLake Views, a proposed subdivision situated approximately 7.5 miles N58°E of La Grange, on Farm-to-Market Highway 159 at Baron Road, just southeast of Farm-to-Market Highway 237, northwest of Fayette Lake, in the Samuel P. Brown League, Abstract 22, Fayette County, Texas.