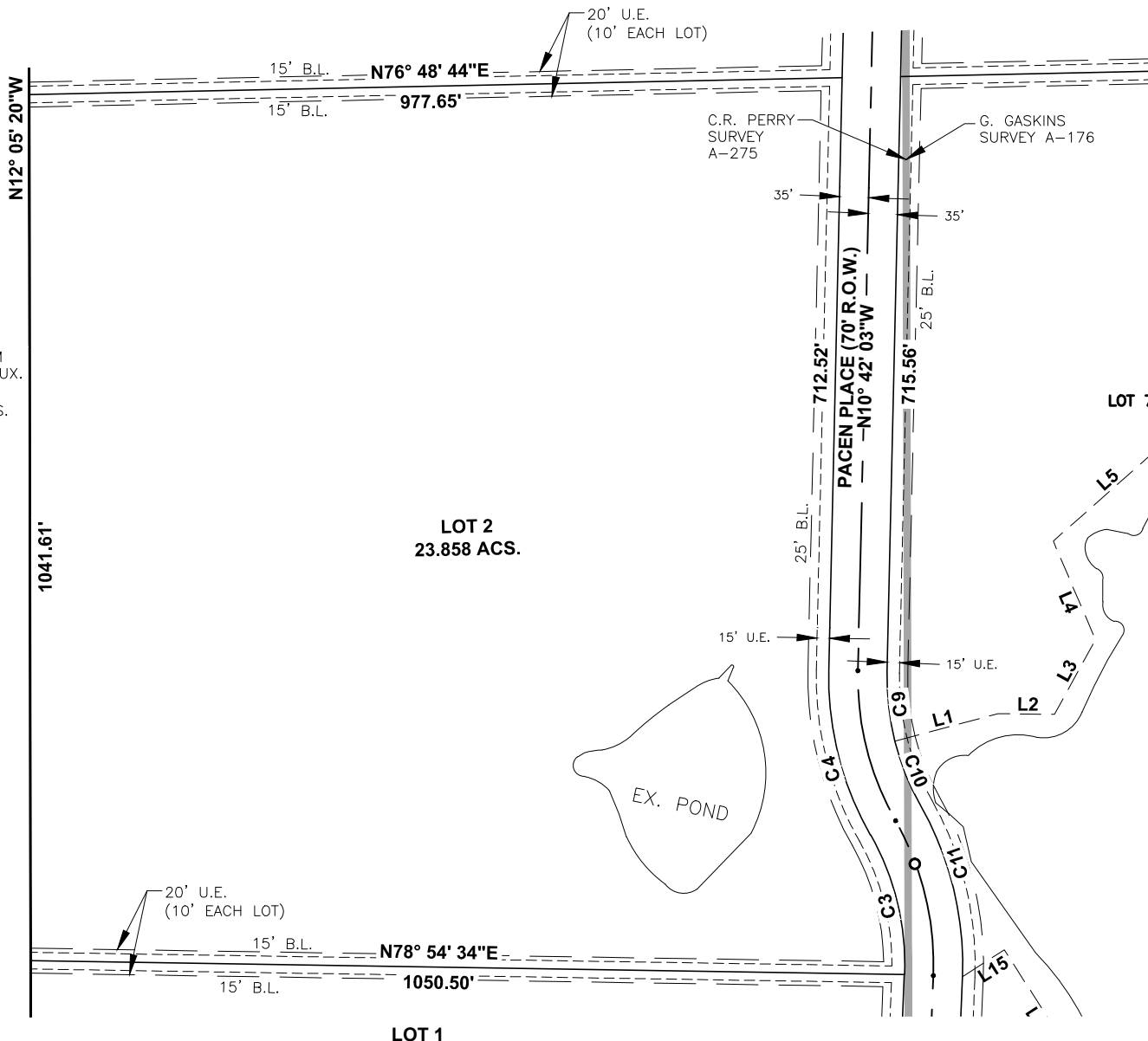


LOT 3

LOT 6

GEORGE WILLIAM  
WEHRUNG, III, ET UX.  
"TRACT 2"  
CALLED 90% ACS.  
VOL. 160/331  
D.R.A.C.



PARTIAL OF  
FINAL PLAT OF  
**SEMPRONIUS SUBDIVISION**

A SUBDIVISION OF 178.828 ACRES  
SITUATED IN THE C. R. PERRY SURVEY, ABSTRACT 275  
AND THE G. GASKINS SURVEY, ABSTRACT 176  
AUSTIN COUNTY, TEXAS  
CONTAINING 7 LOTS

**Strand Associates**  
STRAND ASSOCIATES®

1906 NEIBUHR  
(979) 836-7937

BRENHAM, TEXAS  
FAX (979) 836-7936