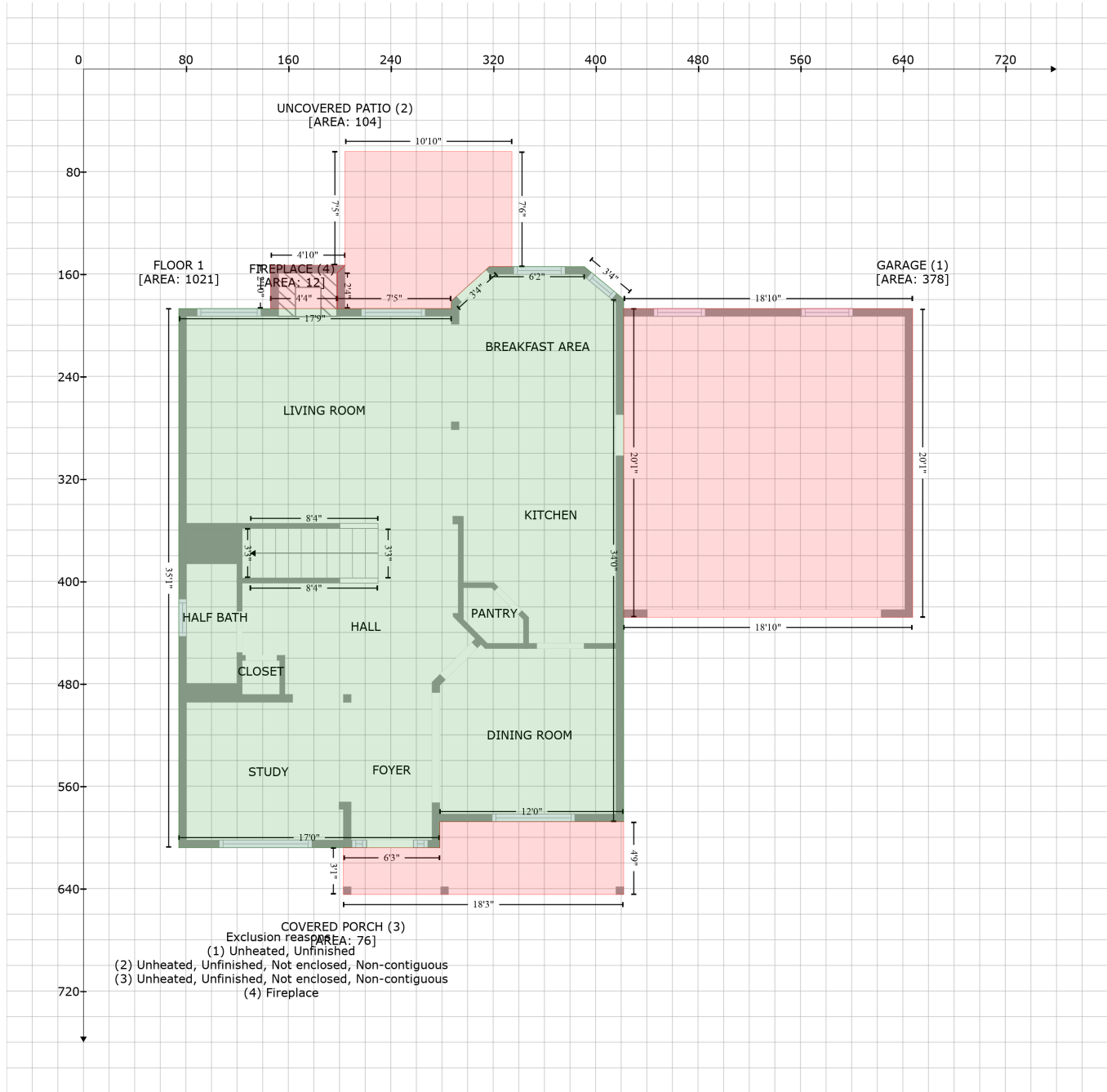


1803 Castle Oaks Drive, Pearland, Brazoria County, Texas, United States, 77581

Gross Living Area: 2342 sq. ft



Space	Area (sq. ft)	Calculation <small>Coordinate Polygon Area Algorithm using inches</small>
FLOOR 1 (Living area)	1021	$-((391.2 + 421.9) * (154.3 - 179.7) + (421.9 + 421.9) * (179.7 - 587.8) + (421.9 + 278.3) * (587.8 - 587.8) + (278.3 + 278.3) * (587.8 - 608.1) + (278.3 + 74.4) * (608.1 - 608.1) + (74.4 + 74.4) * (608.1 - 187.1) + (74.4 + 287.3) * (187.1 - 187.1) + (287.3 + 287.3) * (187.1 - 181.1) + (287.3 + 317.1) * (181.1 - 154.3) + (317.1 + 391.2) * (154.3 - 154.3)) * 0.5 * 0.00694$
GARAGE (Non-living area)	378	$-((647.6 + 647.6) * (187.1 - 428.2) + (647.6 + 421.9) * (428.2 - 428.2) + (421.9 + 421.9) * (428.2 - 187.1) + (421.9 + 647.6) * (187.1 - 187.1)) * 0.5 * 0.00694$

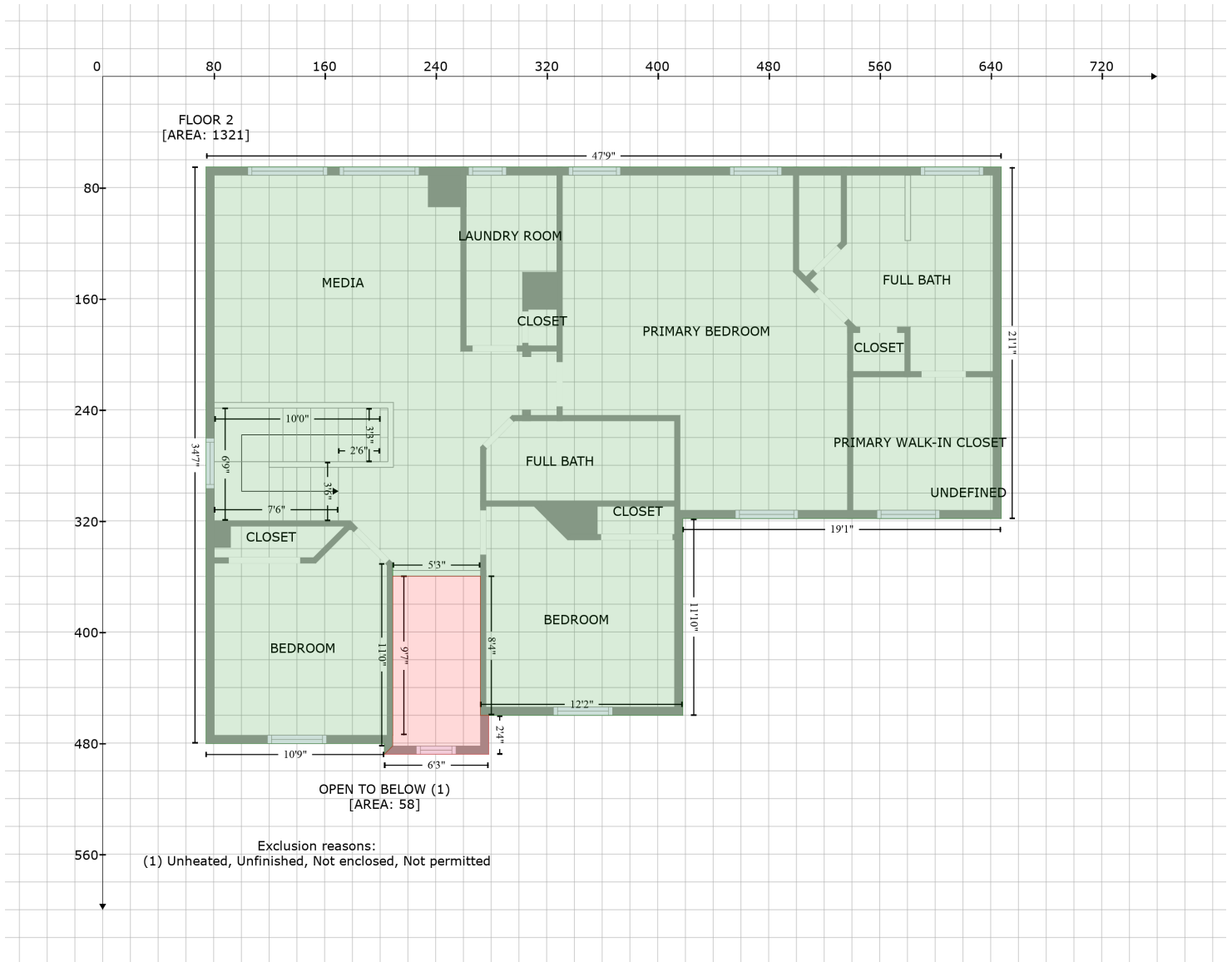
1803 Castle Oaks Drive, Pearland, Brazoria County, Texas, United States, 77581

Gross Living Area: 2342 sq. ft

Space	Area (sq. ft)	Calculation <small>Coordinate Polygon Area Algorithm using inches</small>
UNCOVERED PATIO (Non-living area)	104	$-\left((334.6 + 334.6) * (64.3 - 154.3) + (334.6 + 317.1) * (154.3 - 154.3) + (317.1 + 287.3) * (154.3 - 181.1) + (287.3 + 287.3) * (181.1 - 187.1) + (287.3 + 198.2) * (187.1 - 187.1) + (198.2 + 198.2) * (187.1 - 159.2) + (198.2 + 204.2) * (159.2 - 153.2) + (204.2 + 204.2) * (153.2 - 64.3) + (204.2 + 334.6) * (64.3 - 64.3)\right) * 0.5 * 0.00694$
COVERED PORCH (Non-living area)	76	$-\left((421.9 + 421.9) * (587.8 - 644.6) + (421.9 + 203) * (644.6 - 644.6) + (203 + 203) * (644.6 - 608.1) + (203 + 278.3) * (608.1 - 608.1) + (278.3 + 278.3) * (608.1 - 587.8) + (278.3 + 421.9) * (587.8 - 587.8)\right) * 0.5 * 0.00694$
FIREPLACE (Non-living area)	12	$-\left((204.2 + 198.2) * (153.2 - 159.2) + (198.2 + 198.2) * (159.2 - 187.1) + (198.2 + 146.1) * (187.1 - 187.1) + (146.1 + 146.1) * (187.1 - 153.2) + (146.1 + 204.2) * (153.2 - 153.2)\right) * 0.5 * 0.00694$

1803 Castle Oaks Drive, Pearland, Brazoria County, Texas, United States, 77581

Gross Living Area: 2342 sq. ft



Space	Area (sq. ft)	Calculation
FLOOR 2 (Living area)	1321	Coordinate Polygon Area Algorithm using inches $-((647.6 + 647.6) * (65.2 - 318.3) + (647.6 + 418.1) * (318.3 - 318.3) + (418.1 + 418.1) * (318.3 - 460.1) + (418.1 + 272.3) * (460.1 - 460.1) + (272.3 + 272.3) * (460.1 - 359.7) + (272.3 + 209.2) * (359.7 - 359.7) + (209.2 + 209) * (359.7 - 350.4) + (209 + 209) * (350.4 - 482.1) + (209 + 203) * (482.1 - 488.1) + (203 + 203) * (488.1 - 480.4) + (203 + 74.4) * (480.4 - 480.4) + (74.4 + 74.4) * (480.4 - 65.2) + (74.4 + 647.6) * (65.2 - 65.2)) * 0.5 * 0.00694$
OPEN TO BELOW (Non-living area)	58	$-((272.3 + 272.3) * (359.7 - 460.1) + (272.3 + 278.3) * (460.1 - 460.1) + (278.3 + 278.3) * (460.1 - 488.1) + (278.3 + 203) * (488.1 - 488.1) + (203 + 209) * (488.1 - 482.1) + (209 + 209) * (482.1 - 474.4) + (209 + 209.2) * (474.4 - 474.4) + (209.2 + 209.2) * (474.4 - 359.7) + (209.2 + 272.3) * (359.7 - 359.7)) * 0.5 * 0.00694$