



FEMA Flood Map Service Center: Search By Address

Navigation

Search

[MSC Home \(/portal/\)](#)

[MSC Search by Address \(/portal/search\)](#)

[MSC Search All Products \(/portal/advanceSearch\)](#)

▼ [MSC Products and Tools \(/portal/resources/productsandtools\)](#)

[Hazus \(/portal/resources/hazus\)](#)

[LOMC Batch Files \(/portal/resources/lomc\)](#)

[Product Availability \(/portal/productAvailability\)](#)

[MSC Frequently Asked Questions \(FAQs\) \(/portal/resources/faq\)](#)

[MSC Email Subscriptions \(/portal/subscriptionHome\)](#)

[Contact MSC Help \(/portal/resources/contact\)](#)

Enter an address, place, or coordinates: ?

Whether you are in a high risk zone or not, you may need [flood insurance \(https://www.fema.gov/national-flood-insurance-program\)](https://www.fema.gov/national-flood-insurance-program) because most homeowners insurance doesn't cover flood damage. If you live in an area with low or moderate flood risk, you are 5 times more likely to experience flood than a fire in your home over the next 30 years. For many, a National Flood Insurance Program's flood insurance policy could cost less than \$400 per year. Call your insurance agent today and protect what you've built.
Learn more about [steps you can take \(https://www.fema.gov/what-mitigation\)](https://www.fema.gov/what-mitigation) to reduce flood risk damage.

Search Results—Products for MONTGOMERY COUNTY UNINCORPORATED AREAS

Show ALL Products » (<https://msc.fema.gov/portal/availabilitySearch?addcommunity=480483&communityName=MON>)

The flood map for the selected area is number **48339C0450G**, effective on **08/18/2014** ?

DYNAMIC MAP






MAP IMAGE



[_ \(https://msc.fema.gov/portal/downloadProduct?](https://msc.fema.gov/portal/downloadProduct?productTypeID=FINAL_PRODUCT&productSubTypeID=FIRM_PANEL&productID=48339C0450G)

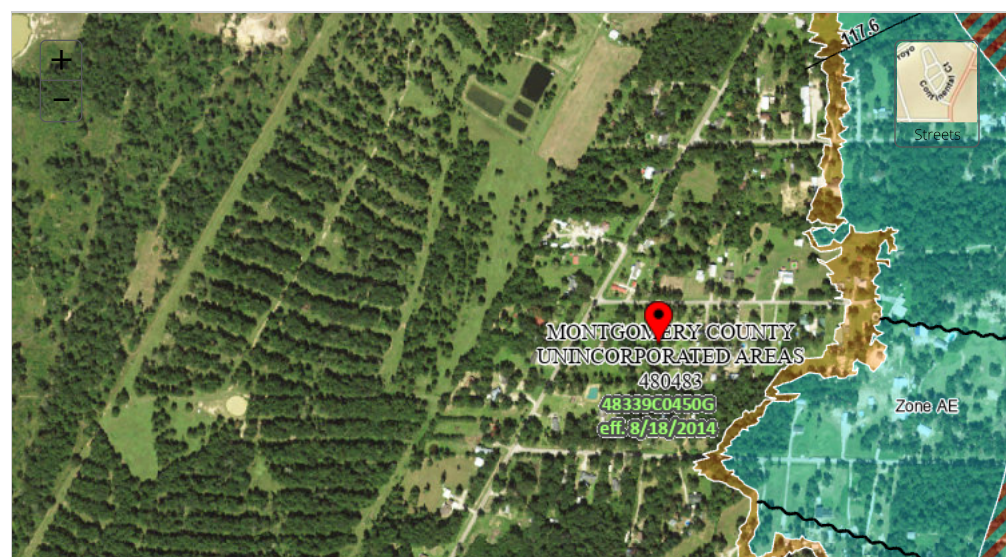
[productTypeID=FINAL_PRODUCT&productSubTypeID=FIRM_PANEL&productID=48339C0450G\)](https://msc.fema.gov/portal/downloadProduct?productTypeID=FINAL_PRODUCT&productSubTypeID=FIRM_PANEL&productID=48339C0450G)

Changes to this FIRM ?

-  Revisions (0)
-  Amendments (8)
-  Revalidations (1)

You can choose a new flood map or move the location pin by selecting a different location on the locator map below or by entering a new location in the search field above. It may take a minute or more during peak hours to generate a dynamic FIRMette.

[Go To NFHL Viewer » \(https://hazards-fema.maps.arcgis.com/apps/webappviewer/index.html?id=8b0adb51996444d\)](https://hazards-fema.maps.arcgis.com/apps/webappviewer/index.html?id=8b0adb51996444d)





PIN Approximate location based on user input and does not represent an authoritative property location

MAP PANELS

- Selected FloodMap Boundary
- Digital Data Available
- No Digital Data Available
- Unmapped

OTHER AREAS

- Area of Minimal Flood Hazard Zone X
- Effective LOMRs
- Area of Undetermined Flood Hazard Zone D
- Otherwise Protected Area
- Coastal Barrier Resource System Area

SPECIAL FLOOD HAZARD AREAS

- Without Base Flood Elevation (BFE) Zone A, V, AE, S
- With BFE or Depth
- Regulatory Floodway Zone AE, AO, AH, VE, AR

OTHER AREAS OF FLOOD HAZARD

- 0.2% Annual Chance Flood Hazard, Areas of 1% annual chance flood with average depth less than one foot or with drainage areas of less than one square mile Zone X
- Future Conditions 1% Annual Chance Flood Hazard Zone X
- Area with Reduced Flood Risk due to Levee. See Notes, Zone X
- Area with Flood Risk due to Levee Zone D

OTHER FEATURES

- Cross Sections with 1% Annual Chance Water Surface Elevation
- Coastal Transect
- Base Flood Elevation Line (BFE)
- Limit of Study
- Jurisdiction Boundary
- Coastal Transect Baseline
- Profile Baseline
- Hydrographic Feature

GENERAL STRUCTURES

- Channel, Culvert, or Storm Sewer
- Levee, Dike, or Floodwall

Share This Page.

[Home](http://www.fema.gov/) ([//www.fema.gov/](http://www.fema.gov/)) [Download Plug-ins](http://www.fema.gov/download-plug-ins) ([//www.fema.gov/download-plug-ins](http://www.fema.gov/download-plug-ins)) [About Us](http://www.fema.gov/about-agency) ([//www.fema.gov/about-agency](http://www.fema.gov/about-agency)) [Privacy Policy](http://www.fema.gov/privacy-policy) ([//www.fema.gov/privacy-policy](http://www.fema.gov/privacy-policy)) [FOIA](http://www.fema.gov/foia) ([//www.fema.gov/foia](http://www.fema.gov/foia)) [Office of the Inspector General](http://www.oig.dhs.gov/) ([//www.oig.dhs.gov/](http://www.oig.dhs.gov/)) [Strategic Plan](http://www.fema.gov/fema-strategic-plan) ([//www.fema.gov/fema-strategic-plan](http://www.fema.gov/fema-strategic-plan)) [Whitehouse.gov](http://www.whitehouse.gov/) ([//www.whitehouse.gov](http://www.whitehouse.gov/)) [DHS.gov](http://www.dhs.gov/) ([//www.dhs.gov](http://www.dhs.gov/)) [Ready.gov](http://www.ready.gov/) ([//www.ready.gov](http://www.ready.gov/)) [USA.gov](http://www.usa.gov/) ([//www.usa.gov](http://www.usa.gov/)) [DisasterAssistance.gov](http://www.disasterassistance.gov/) ([//www.disasterassistance.gov/](http://www.disasterassistance.gov/))



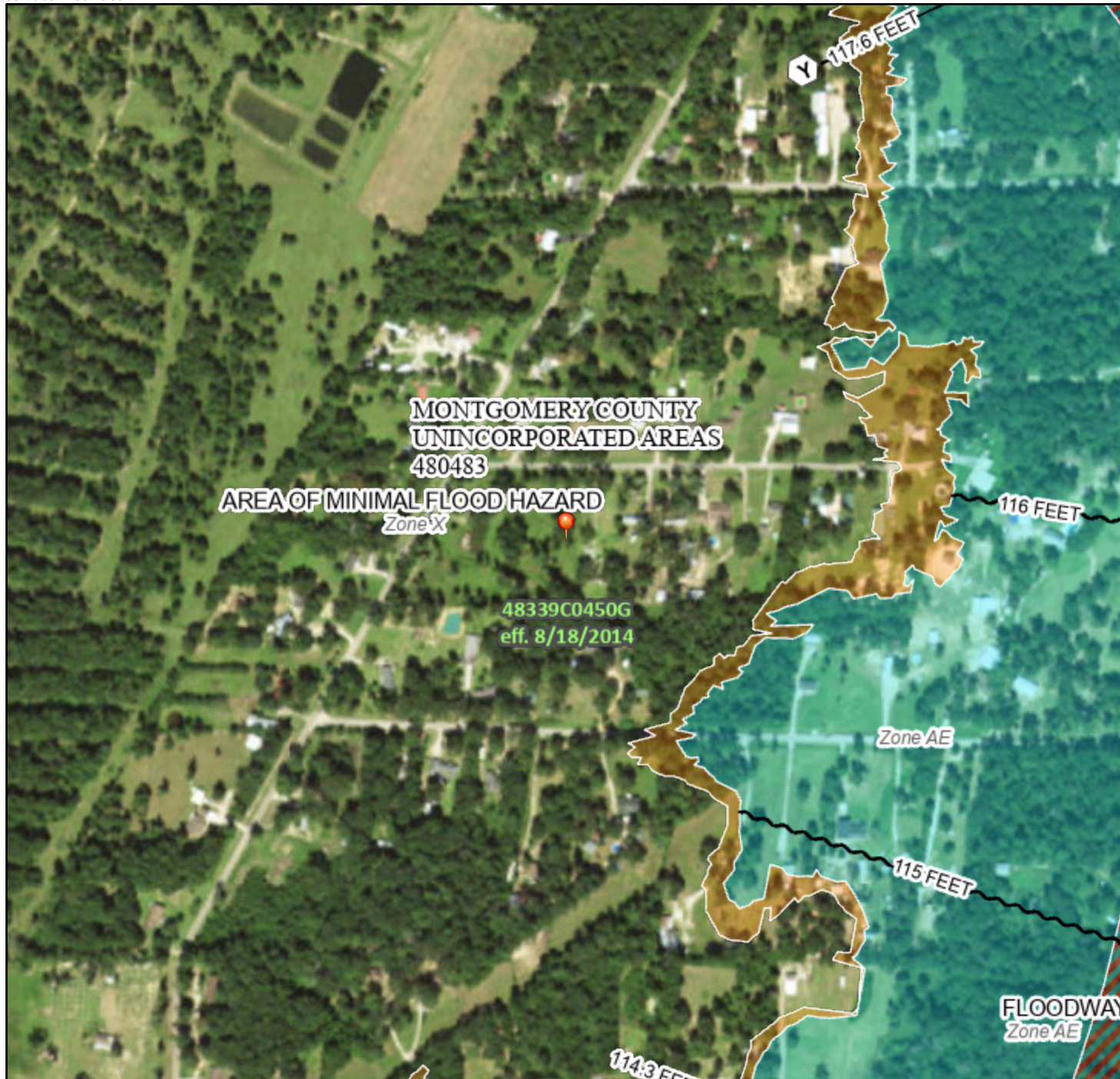
(<https://www.oig.dhs.gov/hotline>)

Official website of the Department of Homeland Security

National Flood Hazard Layer FIRMMette



95°10'38"W 30°15'58"N



Legend

SEE FIS REPORT FOR DETAILED LEGEND AND INDEX MAP FOR FIRM PANEL LAYOUT

| SPECIAL FLOOD HAZARD AREAS | Without Base Flood Elevation (BFE) Zone A, V, A99 | With BFE or Depth Zone AE, AO, AH, VE, AR |
|----------------------------|--|---|
| | | |
| | Regulatory Floodway | |

| | | |
|--|--|---|
| | | 0.2% Annual Chance Flood Hazard, Areas of 1% annual chance flood with average depth less than one foot or with drainage areas of less than one square mile Zone X |
| | | Future Conditions 1% Annual Chance Flood Hazard Zone X |
| | | Area with Reduced Flood Risk due to Levee. See Notes. Zone X |
| | | Area with Flood Risk due to Levee Zone D |

| OTHER AREAS OF FLOOD HAZARD | NO SCREEN | Area of Minimal Flood Hazard Zone X |
|-----------------------------|-----------|--|
| | | Effective LOMRs |
| | | Area of Undetermined Flood Hazard Zone D |

| OTHER AREAS | GENERAL STRUCTURES | |
|-------------|--------------------|----------------------------------|
| | | Channel, Culvert, or Storm Sewer |
| | | Levee, Dike, or Floodwall |

| | | |
|--|------|--------------------------------------|
| | 20.2 | Cross Sections with 1% Annual Chance |
| | 17.5 | Water Surface Elevation |
| | | Coastal Transect |
| | | Base Flood Elevation Line (BFE) |
| | | Limit of Study |
| | | Jurisdiction Boundary |
| | | Coastal Transect Baseline |
| | | Profile Baseline |
| | | Hydrographic Feature |

| OTHER FEATURES | MAP PANELS |
|----------------|---------------------------|
| | Digital Data Available |
| | No Digital Data Available |
| | Unmapped |

The pin displayed on the map is an approximate point selected by the user and does not represent an authoritative property location.

This map complies with FEMA's standards for the use of digital flood maps if it is not void as described below. The basemap shown complies with FEMA's basemap accuracy standards

The flood hazard information is derived directly from the authoritative NFHL web services provided by FEMA. This map was exported on **5/31/2023 at 9:41 PM** and does not reflect changes or amendments subsequent to this date and time. The NFHL and effective information may change or become superseded by new data over time.

This map image is void if the one or more of the following map elements do not appear: basemap imagery, flood zone labels, legend, scale bar, map creation date, community identifiers, FIRM panel number, and FIRM effective date. Map images for unmapped and unmodernized areas cannot be used for regulatory purposes.