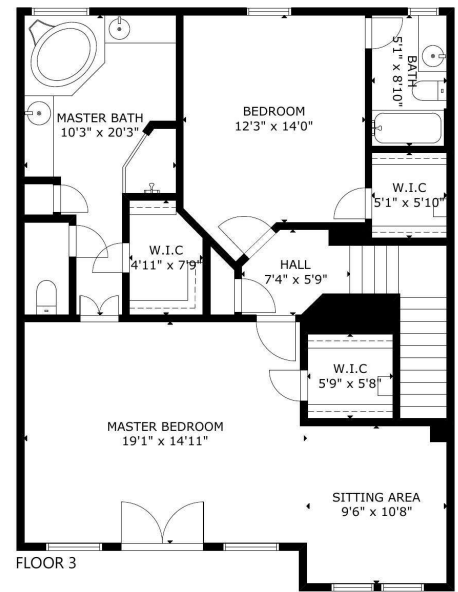
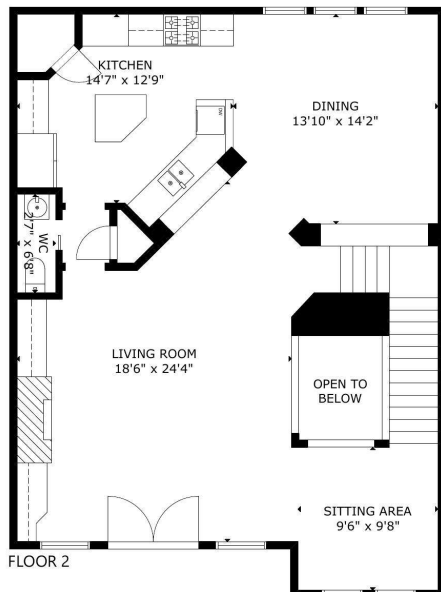
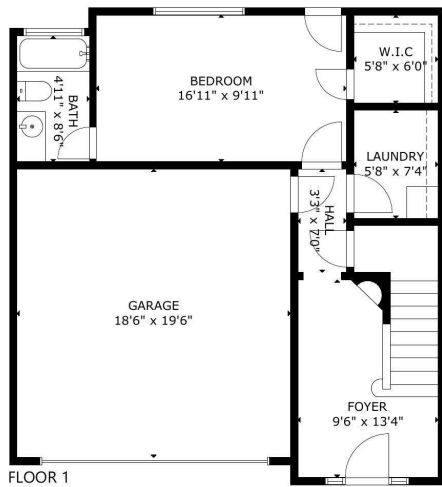


505 Sabine St, Houston, TX, 77007, US



GROSS INTERNAL AREA
 TOTAL: 2,562 sq ft
 FLOOR 1: 476 sq ft, FLOOR 2: 1,043 sq ft
 FLOOR 3: 1,043 sq ft
 EXCLUDED AREA: GARAGE: 360 sq ft
 SIZE AND DIMENSIONS ARE APPROXIMATE, ACTUAL MAY VARY