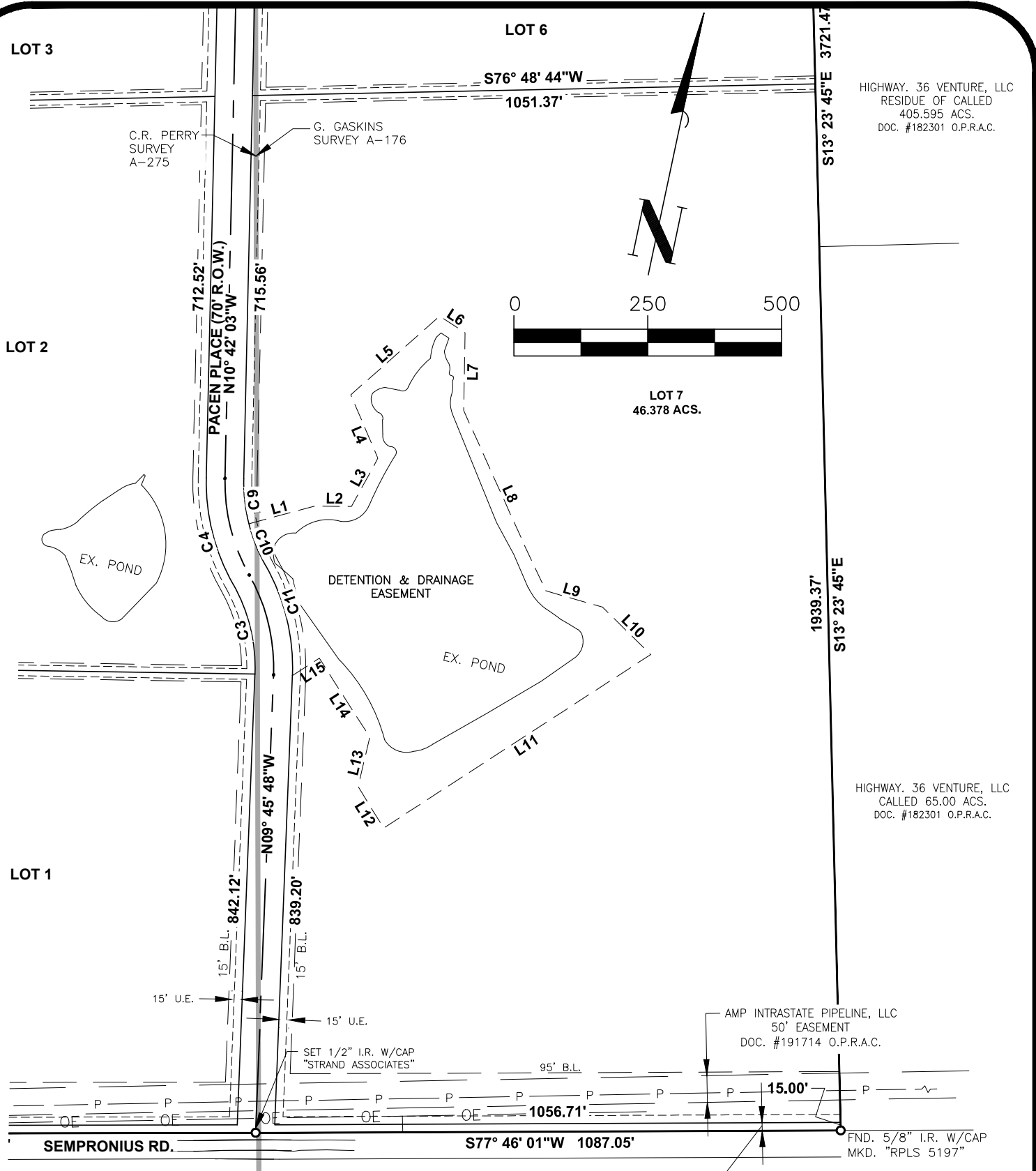
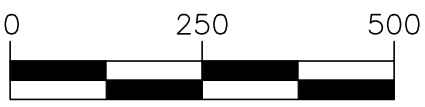


S:\BRE\4400--4499\4479\009\Drawings\CAD\Plat\Individual Lots\Final Plat.dwg



HIGHWAY. 36 VENTURE, LLC
RESIDUE OF CALLED
405.595 ACS.
DOC. #182301 O.P.R.A.C.

HIGHWAY. 36 VENTURE, LLC
CALLED 65.00 ACS.
DOC. #182301 O.P.R.A.C.



PT. FOR C.L. OF PACEN PLACE
R.O.W. BRS S77° 54' 10"W 5.64'
FROM SET 1/2" I.R. W/CAP MKD.
"STRAND ASSOCIATES"



1906 NEIBUHR
(979) 836-7937
BRENHAM, TEXAS
FAX (979) 836-7936

PARTIAL OF FINAL PLAT OF SEMPRONIUS SUBDIVISION

A SUBDIVISION OF 178.828 ACRES
SITUATED IN THE C. R. PERRY SURVEY, ABSTRACT 275
AND THE G. GASKINS SURVEY, ABSTRACT 176
AUSTIN COUNTY, TEXAS
CONTAINING 7 LOTS