



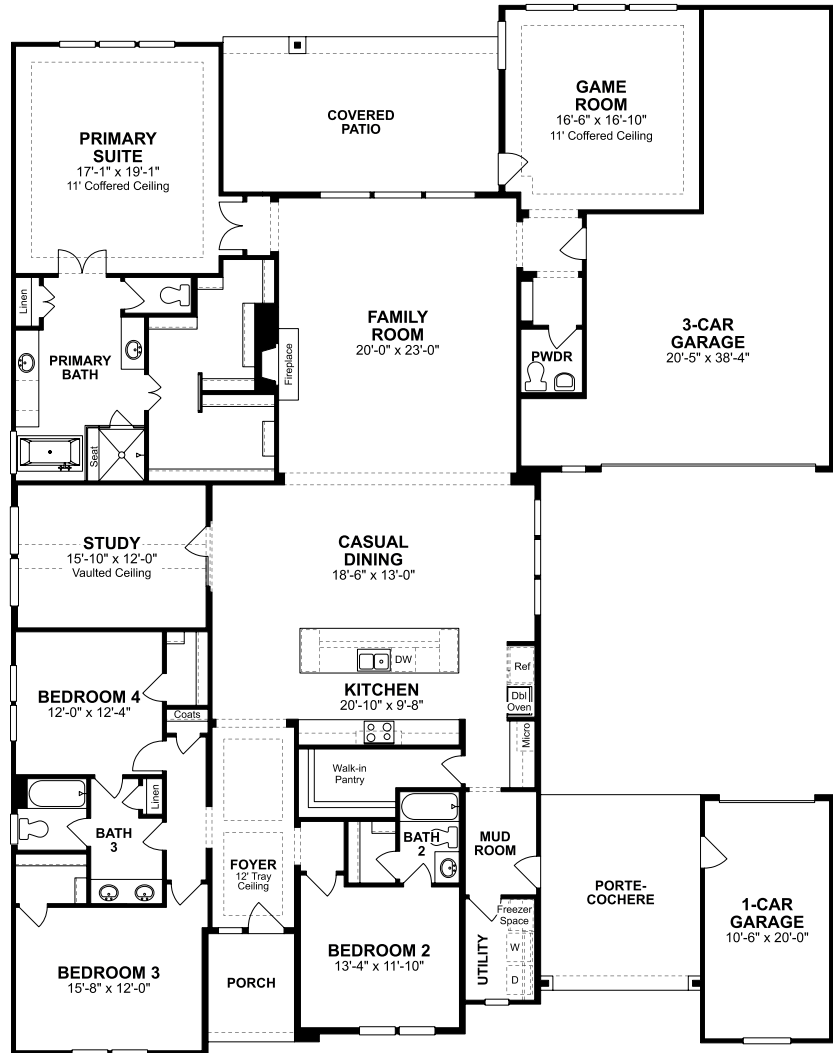
Carignan

First Floor

4 Beds

3 Full Baths | 1 Half Bath

3,796 Sq. Ft.



Unselected Options:

42" Entry Door, Alternate Kitchen Appliances, Drop-in Tub, Media Room, 2nd Primary Suite, 12' Sliding Glass Door at Family Room, 9' Sliding Glass Door at Casual Dining, 11' Groin Vault Ceiling at Primary Suite, Beamed Ceiling at Primary Suite, 12' Coffered Ceiling at Family Room, Shower at Bath 2, Bath 4, 2-Car Garage, 9' Sliding Glass Door at Game Room

These renderings are intended for illustrative purposes only. Images are copyrighted and may not be distributed, modified or reproduced without prior written permission. Information is provided "as is", without warranty, either express or implied, including, but not limited to, the implied warranties of merchantability, fitness for a particular purpose, or non-infringement. Access and use of the images and affiliated products or links are subject to all applicable laws relating to the use of web-based information, copyrighted materials and intellectual property. Site plans, floorplans, community maps, photos and/or computer-generated renderings have been provided for illustrative purposes, are conceptual in nature, and are merely an artist's rendition of actual products intended for example only. These renderings may not accurately represent the condition, size or design of the actual items being represented.