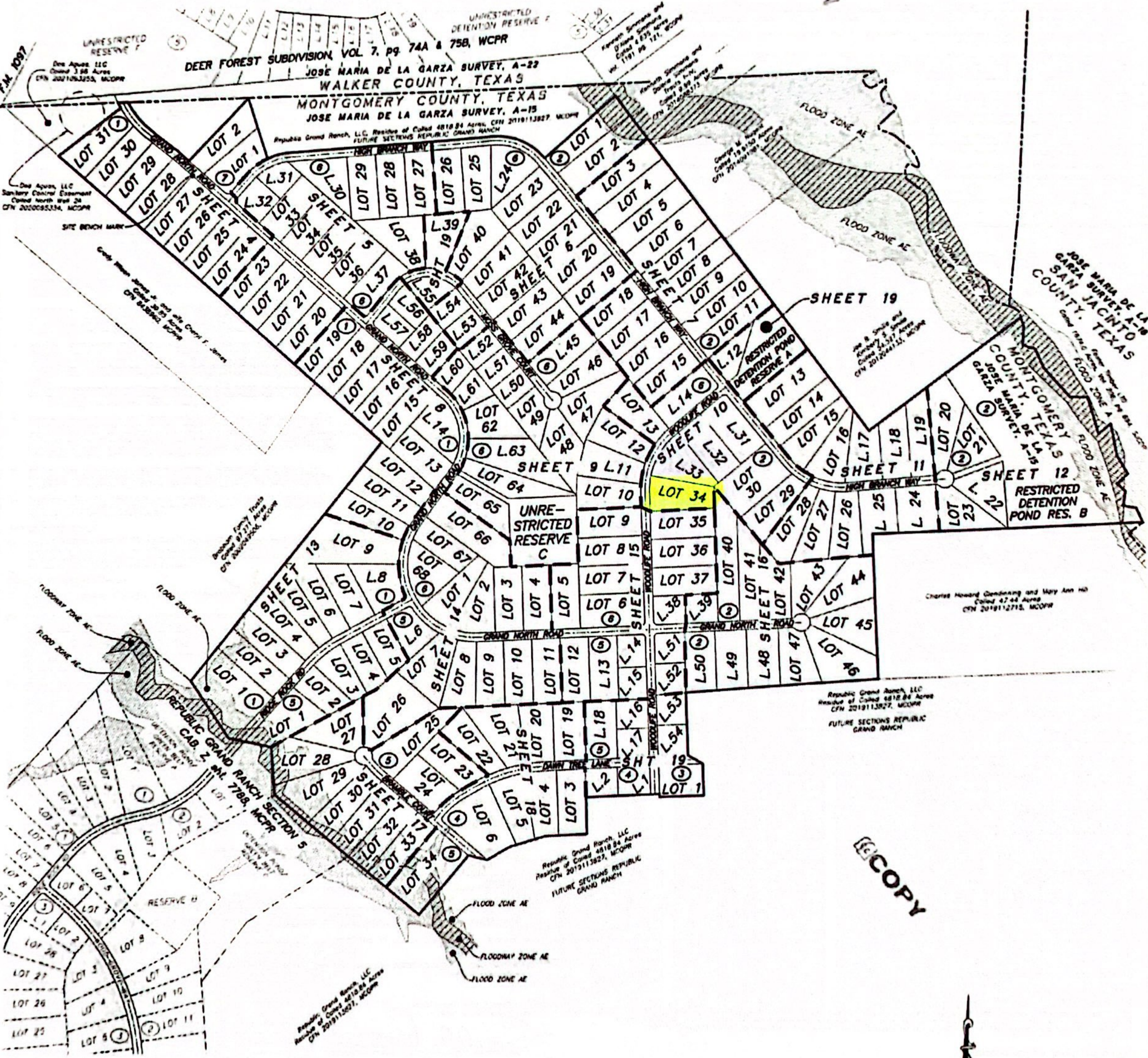


ECOPY



ECOPY



THIS SHEET NOT TO SCALE

PLAT OF
**REPUBLIC GRAND RANCH
SECTION 6**

CONTAINING 7 BLOCKS, 196 LOTS, 3 RESERVES

A SUBDIVISION CONTAINING 449.68 ACRES OF LAND,
OUT OF THE RESIDUE OF THE 4818.84 ACRES
REPUBLIC GRAND RANCH, LLC TRACT, CLERK'S FILE
No. 2019113827, MONTGOMERY COUNTY
OFFICIAL PUBLIC RECORDS
JOSE MARIA DE LA GARZA SURVEY, A-15
MONTGOMERY COUNTY, TEXAS

DECEMBER 2021

Northern, Inc.
P.O. Box 838, New Waverly, TX 77858
TABLES Form No. (12/2021)
936-661-3325

Job No. 21-014

- LEGEND**
- ① Block Number
 - CMF Found Concrete Monument, size and type as noted
 - ② 43RPL/43R Found 1/2" Iron Rod/Pipe, with cap as noted, unless otherwise noted
 - ③ 52RPL/52R Found 5/8" Iron Rod, with cap as noted
 - ④ Found 5/8" Iron Rod with 1-3/4" blue plastic cap and MICHAEL A. NANKEN RPL 8 6551', UNLESS otherwise noted
 - ⑤ Pond For Corner in Peach Creek
 - CFN Clerk's File Number
 - Floodway Area in Zone AE
 - Flood Zone AE
 - Flood Zone A
 - MCSR Montgomery County Deed Records
 - MCPH Montgomery County Official Public Records
 - MCPR Montgomery County Real Property Records
 - MCFR Montgomery County Plat Records
 - MNF Minimum Finished Floor Elevation
 - P.L.E. DE & VTE Public Utility Easement, Grange Easement & Nature Trail Easement
 - REAR San Jacinto County Deed Records
 - VB Vegetative Buffer
 - VWD Florida Storm Private Drainage Easement
 - WRB Water County Plat Records

Sheet Number	Content	Sheet Number	Content
1	Sheet Number Layout	11	Block 2
2	Certifications, Dedications and Vicinity Map	12	Block 2
3	Notes, Line and Curve Tables	13	Blocks 1 and 5
4	Block 1 and 7, Site Bench Mark	14	Blocks 5 and 6
5	Block 1 and 6	15	Blocks 2, 5 and 6
6	Block 2 and 6	16	Block 2
7	Block 2 and 6	17	Block 5
8	Block 1 and 6	18	Blocks 4 and 5
9	Block 6	19	Blocks 2, 3, 4, 5 and 6
10	Blocks 2 and 6		