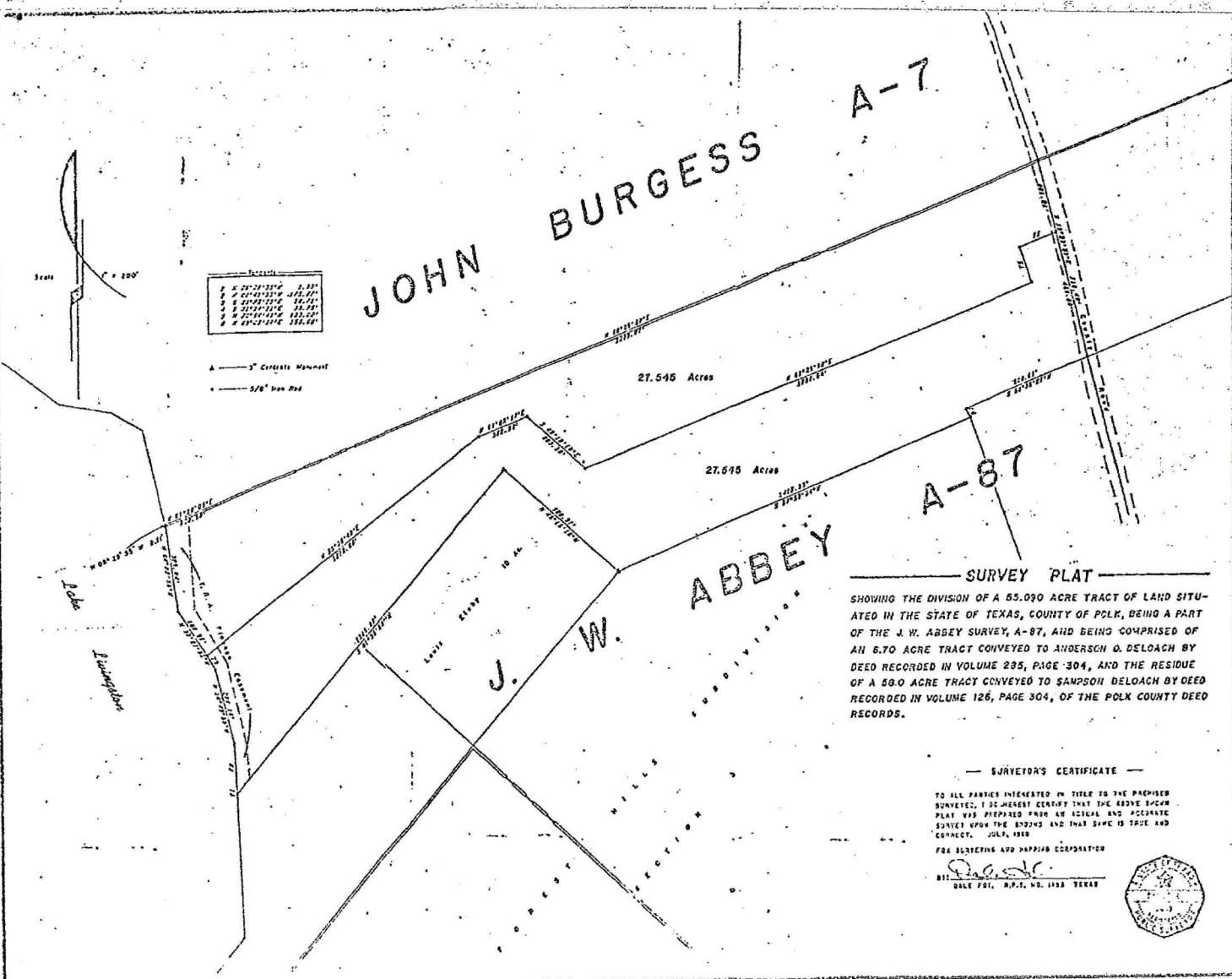


# JOHN BURGESS A-7



Distances	
1	27.545
2	27.515
3	27.515
4	27.515
5	27.515
6	27.515
7	27.515
8	27.515
9	27.515
10	27.515
11	27.515
12	27.515
13	27.515
14	27.515
15	27.515
16	27.515
17	27.515
18	27.515
19	27.515
20	27.515
21	27.515
22	27.515
23	27.515
24	27.515
25	27.515
26	27.515
27	27.515
28	27.515
29	27.515
30	27.515
31	27.515
32	27.515
33	27.515
34	27.515
35	27.515
36	27.515
37	27.515
38	27.515
39	27.515
40	27.515
41	27.515
42	27.515
43	27.515
44	27.515
45	27.515
46	27.515
47	27.515
48	27.515
49	27.515
50	27.515
51	27.515
52	27.515
53	27.515
54	27.515
55	27.515
56	27.515
57	27.515
58	27.515
59	27.515
60	27.515
61	27.515
62	27.515
63	27.515
64	27.515
65	27.515
66	27.515
67	27.515
68	27.515
69	27.515
70	27.515
71	27.515
72	27.515
73	27.515
74	27.515
75	27.515
76	27.515
77	27.515
78	27.515
79	27.515
80	27.515
81	27.515
82	27.515
83	27.515
84	27.515
85	27.515
86	27.515
87	27.515
88	27.515
89	27.515
90	27.515
91	27.515
92	27.515
93	27.515
94	27.515
95	27.515
96	27.515
97	27.515
98	27.515
99	27.515
100	27.515

▲ — 3" Concrete Monument  
 ● — 5/8" Iron Rod

27.545 Acres

27.515 Acres

A-87

### SURVEY PLAT

SHOWING THE DIVISION OF A 55.090 ACRE TRACT OF LAND SITUATED IN THE STATE OF TEXAS, COUNTY OF POLK, BEING A PART OF THE J. W. ABBEY SURVEY, A-87, AND BEING COMPRISED OF AN 8.70 ACRE TRACT CONVEYED TO ANDERSON & DELOACH BY DEED RECORDED IN VOLUME 285, PAGE 304, AND THE RESIDUE OF A 58.0 ACRE TRACT CONVEYED TO SAMPSON DELOACH BY DEED RECORDED IN VOLUME 126, PAGE 304, OF THE POLK COUNTY DEED RECORDS.

### SURVEYOR'S CERTIFICATE

TO ALL PARTIES INTERESTED IN TITLE TO THE PREMISES SURVEYED, I DO HEREBY CERTIFY THAT THE ABOVE SURVEY PLAT WAS PREPARED FROM AN ACCURATE AND CORRECT SURVEY UPON THE RECORDS AND THAT SAME IS TRUE AND CORRECT. JULY, 1918

FOR SURVEYING AND MAPPING CORPORATION

BY W. J. DeLoach  
 DALE POLK, N.P.S., NO. 1938 TEXAS



VOL. 283 PAGE 261