



30.6182, -95.8858



30

30

30

30

30.6188, -95.8861

red

GvC

30



30

GvC

30

Soils



Name

Greenvine clay, 1 to 5 percent slopes

Capability (non-irrigated)

3e

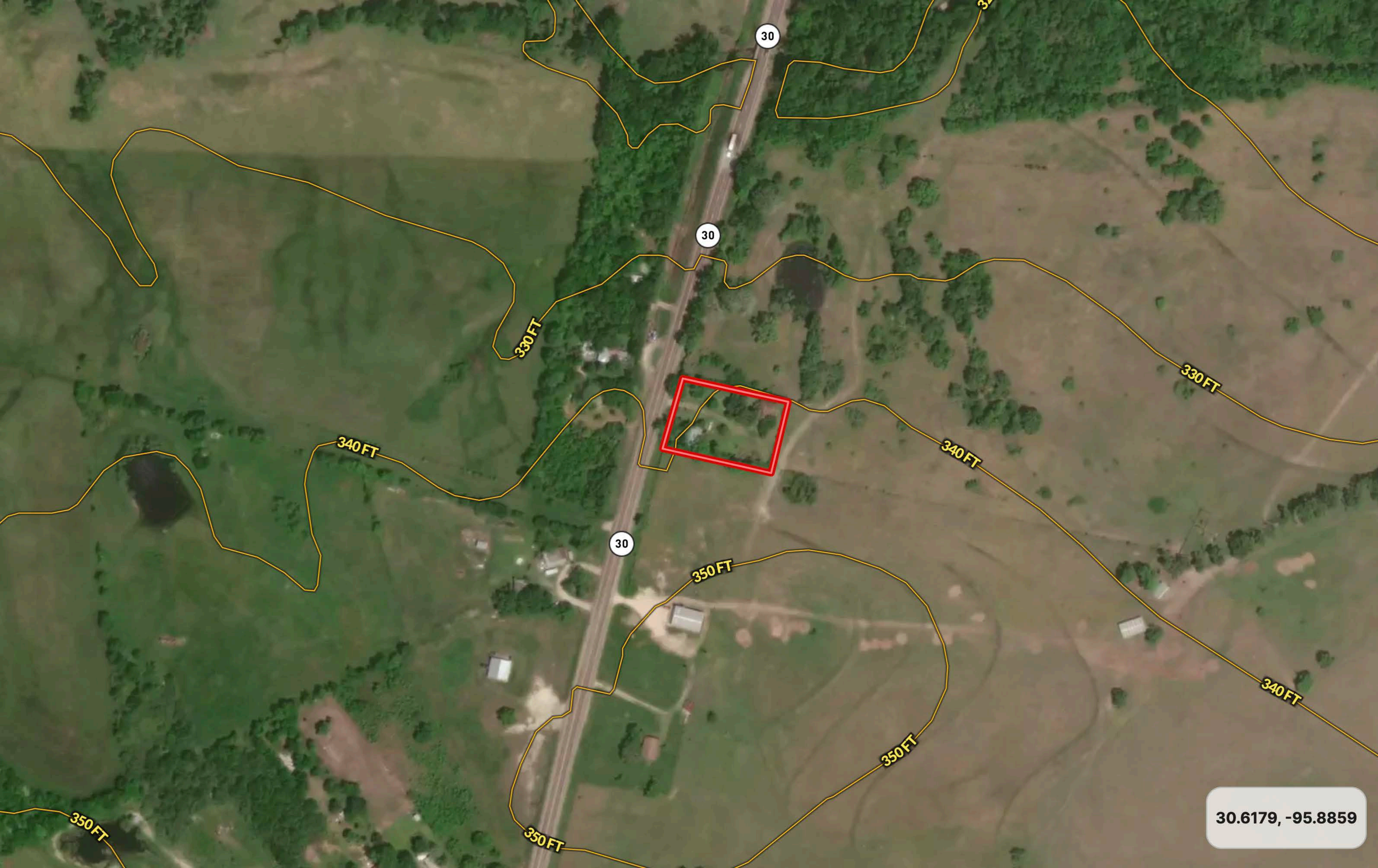
Subclass E

Susceptibility to erosion.

Class (non-irrigated) 3

Soils have limitations that reduce the choice of plants and/or require special conservation practices. When used for cultivated crops the conservation practices are usually more difficult to apply and maintain. These soils

30.619, -95.8855



30.6179, -95.8859