

LINE	BEARING	DISTANCE
L1	S 07°04'25" E	394.41
L2	S 89°33'52" W	90.12
L3	S 49°33'52" W	148.67
L4	S 62°21'47" W	123.66
L5	S 53°54'27" W	37.55
L6	S 50°52'28" W	100.83
L7	S 60°29'47" W	49.18
L8	S 75°56'59" W	34.81
L9	N 75°22'58" W	32.67
L10	N 65°33'02" W	76.92
L11	N 60°28'19" W	23.76
L12	N 80°28'19" W	66.48
L13	S 84°38'07" W	56.88
L14	N 34°03'08" W	249.82
L15	N 29°03'08" W	249.82
L16	N 44°35'11" W	53.55
L17	N 11°28'04" E	141.70
L18	N 19°24'59" E	112.50
L19	N 01°56'53" E	131.34
L20	N 1°34'50" E	83.54
L21	N 1°03'59" E	222.77
L22	N 60°56'51" W	173.91
L23	N 72°58'48" W	91.79
L24	N 22°58'48" W	50.23
L25	S 35°28'03" W	80.04

SOMERSET TRAILS, LLC
 CLERK'S FILE NO. 20146734
 SAN JACINTO COUNTY
 OFFICIAL PUBLIC RECORDS

WESTER TRAILS, LLC
 CLERK'S FILE NO. 14285
 SAN JACINTO COUNTY
 OFFICIAL PUBLIC RECORDS

SOMERSET TRAILS, LLC
 CLERK'S FILE NO. 1827
 SAN JACINTO COUNTY
 OFFICIAL PUBLIC RECORDS

SOMERSET TRAILS, LLC
 CLERK'S FILE NO. 1827
 SAN JACINTO COUNTY
 OFFICIAL PUBLIC RECORDS

SOMERSET TRAILS, LLC
 CLERK'S FILE NO. 1827
 SAN JACINTO COUNTY
 OFFICIAL PUBLIC RECORDS

SOMERSET TRAILS, LLC
 CLERK'S FILE NO. 1827
 SAN JACINTO COUNTY
 OFFICIAL PUBLIC RECORDS

SOMERSET TRAILS, LLC
 CLERK'S FILE NO. 1827
 SAN JACINTO COUNTY
 OFFICIAL PUBLIC RECORDS

SOMERSET TRAILS, LLC
 CLERK'S FILE NO. 1827
 SAN JACINTO COUNTY
 OFFICIAL PUBLIC RECORDS

SOMERSET TRAILS, LLC
 CLERK'S FILE NO. 1827
 SAN JACINTO COUNTY
 OFFICIAL PUBLIC RECORDS

SOMERSET TRAILS, LLC
 CLERK'S FILE NO. 1827
 SAN JACINTO COUNTY
 OFFICIAL PUBLIC RECORDS

SOMERSET TRAILS, LLC
 CLERK'S FILE NO. 1827
 SAN JACINTO COUNTY
 OFFICIAL PUBLIC RECORDS

SOMERSET TRAILS, LLC
 CLERK'S FILE NO. 1827
 SAN JACINTO COUNTY
 OFFICIAL PUBLIC RECORDS

SOMERSET TRAILS, LLC
 CLERK'S FILE NO. 1827
 SAN JACINTO COUNTY
 OFFICIAL PUBLIC RECORDS

SOMERSET TRAILS, LLC
 CLERK'S FILE NO. 1827
 SAN JACINTO COUNTY
 OFFICIAL PUBLIC RECORDS

SOMERSET TRAILS, LLC
 CLERK'S FILE NO. 1827
 SAN JACINTO COUNTY
 OFFICIAL PUBLIC RECORDS

SOMERSET TRAILS, LLC
 CLERK'S FILE NO. 1827
 SAN JACINTO COUNTY
 OFFICIAL PUBLIC RECORDS

SOMERSET TRAILS, LLC
 CLERK'S FILE NO. 1827
 SAN JACINTO COUNTY
 OFFICIAL PUBLIC RECORDS

SOMERSET TRAILS, LLC
 CLERK'S FILE NO. 1827
 SAN JACINTO COUNTY
 OFFICIAL PUBLIC RECORDS

SOMERSET TRAILS, LLC
 CLERK'S FILE NO. 1827
 SAN JACINTO COUNTY
 OFFICIAL PUBLIC RECORDS

SOMERSET TRAILS, LLC
 CLERK'S FILE NO. 1827
 SAN JACINTO COUNTY
 OFFICIAL PUBLIC RECORDS

SOMERSET TRAILS, LLC
 CLERK'S FILE NO. 1827
 SAN JACINTO COUNTY
 OFFICIAL PUBLIC RECORDS

SOMERSET TRAILS, LLC
 CLERK'S FILE NO. 1827
 SAN JACINTO COUNTY
 OFFICIAL PUBLIC RECORDS

SOMERSET TRAILS, LLC
 CLERK'S FILE NO. 1827
 SAN JACINTO COUNTY
 OFFICIAL PUBLIC RECORDS

SOMERSET TRAILS, LLC
 CLERK'S FILE NO. 1827
 SAN JACINTO COUNTY
 OFFICIAL PUBLIC RECORDS

SOMERSET TRAILS, LLC
 CLERK'S FILE NO. 1827
 SAN JACINTO COUNTY
 OFFICIAL PUBLIC RECORDS

SOMERSET TRAILS, LLC
 CLERK'S FILE NO. 1827
 SAN JACINTO COUNTY
 OFFICIAL PUBLIC RECORDS

SOMERSET TRAILS, LLC
 CLERK'S FILE NO. 1827
 SAN JACINTO COUNTY
 OFFICIAL PUBLIC RECORDS

SOMERSET TRAILS, LLC
 CLERK'S FILE NO. 1827
 SAN JACINTO COUNTY
 OFFICIAL PUBLIC RECORDS

SOMERSET TRAILS, LLC
 CLERK'S FILE NO. 1827
 SAN JACINTO COUNTY
 OFFICIAL PUBLIC RECORDS

SOMERSET TRAILS, LLC
 CLERK'S FILE NO. 1827
 SAN JACINTO COUNTY
 OFFICIAL PUBLIC RECORDS

SOMERSET TRAILS, LLC
 CLERK'S FILE NO. 1827
 SAN JACINTO COUNTY
 OFFICIAL PUBLIC RECORDS

SOMERSET TRAILS, LLC
 CLERK'S FILE NO. 1827
 SAN JACINTO COUNTY
 OFFICIAL PUBLIC RECORDS

SOMERSET TRAILS, LLC
 CLERK'S FILE NO. 1827
 SAN JACINTO COUNTY
 OFFICIAL PUBLIC RECORDS

SOMERSET TRAILS, LLC
 CLERK'S FILE NO. 1827
 SAN JACINTO COUNTY
 OFFICIAL PUBLIC RECORDS

SOMERSET TRAILS, LLC
 CLERK'S FILE NO. 1827
 SAN JACINTO COUNTY
 OFFICIAL PUBLIC RECORDS

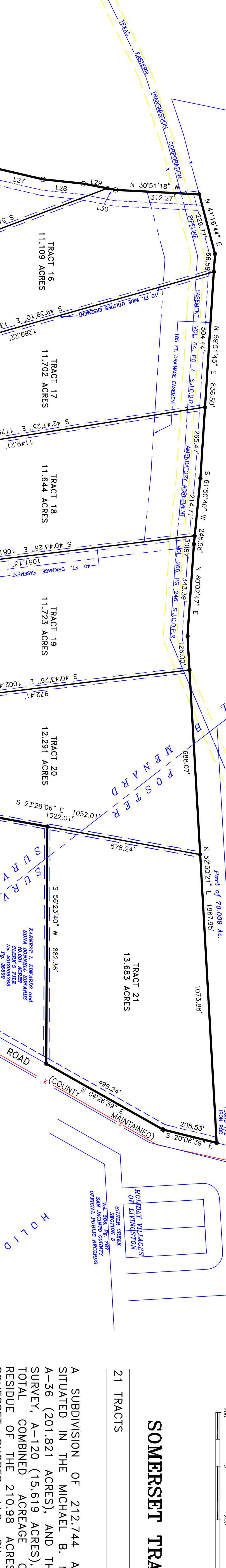
SOMERSET TRAILS, LLC
 CLERK'S FILE NO. 1827
 SAN JACINTO COUNTY
 OFFICIAL PUBLIC RECORDS

SOMERSET TRAILS, LLC
 CLERK'S FILE NO. 1827
 SAN JACINTO COUNTY
 OFFICIAL PUBLIC RECORDS

SOMERSET TRAILS, LLC
 CLERK'S FILE NO. 1827
 SAN JACINTO COUNTY
 OFFICIAL PUBLIC RECORDS

SOMERSET TRAILS, LLC
 CLERK'S FILE NO. 1827
 SAN JACINTO COUNTY
 OFFICIAL PUBLIC RECORDS

SOMERSET TRAILS, LLC
 CLERK'S FILE NO. 1827
 SAN JACINTO COUNTY
 OFFICIAL PUBLIC RECORDS



- NOTES**
1. BEARINGS FOR THIS SURVEY ARE BASED ON DEED CALLS FOR THE 210,598 ACRES DESCRIBED IN DEED TO SOMERSET TRAILS, LLC, RECORDED UNDER CLERK'S FILE NO. 20146734, PAGE 29099 OF THE SAN JACINTO COUNTY OFFICIAL PUBLIC RECORDS.
 2. NO CONSTRUCTION OR OTHER DEVELOPMENT WITHIN THIS SUBDIVISION MAY BEGON UNTIL ALL SAN JACINTO COUNTY DEVELOPMENT REQUIREMENTS HAVE BEEN MET.
 3. NO PORTION OF THIS SUBDIVISION LIES WITHIN THE BOUNDARIES OF ANY MUNICIPALITY'S CORPORATE CITY LIMITS, OR AREA OF EXTRA TERRITORIAL JURISDICTION.
 4. THIS SUBDIVISION IS WITHIN THE BOUNDARIES OF THE COLDSPRING-COMMUNIST SCHOOL DISTRICT.
 5. THIS PROPERTY DOES NOT LIE WITHIN ANY SPECIAL FLOOD HAZARD AREA AS DEPICTED ON FEMA FLOOD INSURANCE RATE MAP COMMUNITY NO. 48053, PANEL NO. 0100, SHEET C, EFFECTIVE DATE NOVEMBER 4, 2010.
 6. NO STRUCTURE IN THIS SUBDIVISION SHALL BE OCCUPIED UNTIL CONNECTED TO A PUBLIC SEWER SYSTEM OR TO AN ON-SITE WASTEWATER SYSTEM, WHICH HAS BEEN APPROVED AND PERMITTED BY SAN JACINTO COUNTY.
 7. NO STRUCTURE IN THIS SUBDIVISION SHALL BE OCCUPIED UNTIL CONNECTED TO AN INDIVIDUAL WATER SUPPLY, STATE-APPROVED COMMUNITY WATER SYSTEM, OR ENGINEERED RAINWATER COLLECTION SYSTEM.
 8. THERE SHALL BE NO 911 ADDRESSES ISSUED TO VACANT LOTS. 911 ADDRESSES SHALL BE ISSUED ONLY WHEN A DEVELOPMENT PERMIT IS APPLIED FOR PER STRUCTURE.
 9. ALL EXISTING PRELIMINARY EASEMENTS WITHIN THE LIMITS OF THE SUBDIVISION HAVE BEEN SHOWN.
 10. ALL DRAINAGE EASEMENTS SHOWN HEREON SHALL BE KEPT CLEAR OF FENCES, BUILDINGS, PLANTINGS, AND OTHER OBSTRUCTIONS TO THE OPERATION AND MAINTENANCE OF THE DRAINAGE FACILITIES.
 11. S.A.C.O.P.R. DENOTES SAN JACINTO COUNTY OFFICIAL PUBLIC RECORDS
 12. S.A.C.O.P.R. DENOTES SAN JACINTO COUNTY DEED RECORDS
 13. FOR TRACTS 1, 2, AND 5 THROUGH 21 (ALL 10 ACRES AND LARGER) TO BE EXEMPTED FROM THE SAN JACINTO COUNTY ONE-SITE SEWAGE FACILITY RULES AS STATED IN SECTION 10 OF APPENDIX 6 OF THE SAN JACINTO COUNTY REGULATIONS FOR SUBDIVISIONS AND DEVELOPMENTS, THE ON-SITE SEWAGE DISPOSAL SYSTEM FOR TRACTS 1, 2, AND 5 THROUGH 21 SHALL BE A ONE-SITE SEWAGE DISPOSAL SYSTEM FOR NEARER THAN 100 FEET OF THE PROPERTY LINE.
 14. ALL BUYERS MUST BE REMITTED THROUGH PRESENT FOUR COUNTY COMMISSIONERS' OFFICE TO RECEIVE A DEVELOPMENT PERMIT FROM SAN JACINTO COUNTY. SIZE TO BE DETERMINED BY PRECINCT FOUR ROAD AND BRIDGE PERSONNEL.

CURVE DELTA ANGLE	RAADIUS	ARC LENGTH	CHORD BEARING	CHORD LENGTH	
C1	1750.26	2122.00	S 89°56'14" W	684.17	
C2	1750.26	2122.00	S 89°56'14" W	684.17	
C3	7711.15	2122.00	S 53°09'04" W	2565.02	
C4	548.37	440.00	S 49°40'34" W	44.60	
C5	1974.50	440.00	S 49°40'34" W	150.48	
C6	6123.34	279.02	S 54°48'27" E	80.88	
C7	5242.36	108.70	N 100°26' N	181.64	
C8	4130.56	112.00	N 01°32'09" W	79.39	
C9	2419.02	265.50	N 09°32'23" W	111.84	
C10	1134.39	1233.00	N 09°01'51" E	224.12	
C11	313.32	262.50	N 84°48'07" W	191.21	
C12	313.32	262.50	N 84°48'07" W	191.21	
C13	4071.30	285.00	N 61°53'55" E	156.93	
C14	619.37	285.00	N 61°53'55" E	31.46	
C15	52704.00	285.00	S 61°30'03" W	256.17	
C16	1750.26	2800.00	S 27°24'58" W	327.71	
C17	1750.26	2800.00	S 27°24'58" W	327.71	
C18	452.48	2800.00	N 46°50'10" E	238.41	
C19	2703.99	2800.00	N 100°98' N	100.98	
C20	651.45	2800.00	S 43°46'43" W	335.18	
C21	452.48	2800.00	S 27°24'58" W	238.40	
C22	452.48	2800.00	S 27°24'58" W	238.40	
C23	1322.32	1000.00	N 233.45	N 89°50'38" E	232.92
C24	902.46	1000.00	N 89°50'38" E	157.72	
C25	1715.20	1000.00	S 57°54'14" W	300.03	

AYAL ATHENS LIMITED PARTNERSHIP
 CLERK'S FILE NO. 07-488
 SAN JACINTO COUNTY
 OFFICIAL PUBLIC RECORDS

CHAD MIZELLIA and wife
 CLERK'S FILE NO. 09-508
 SAN JACINTO COUNTY
 OFFICIAL PUBLIC RECORDS

CHAD MIZELLIA and wife
 CLERK'S FILE NO. 09-508
 SAN JACINTO COUNTY
 OFFICIAL PUBLIC RECORDS

MARK A. BRIGGS &
 LESLIE M. BRIGGS
 CLERK'S FILE NO. 09-508
 SAN JACINTO COUNTY
 OFFICIAL PUBLIC RECORDS

JULIAN GARCIA
 CLERK'S FILE NO. 09-508
 SAN JACINTO COUNTY
 OFFICIAL PUBLIC RECORDS

SOMERSET TRAIL
 TOTAL DEDICATED RIGHT OF WAY - 3,026 ACRES
 TOTAL LENGTH - 3,577.52 FT.

LEGEND

1. --- DENOTES 20 FT. WIDE UTILITY EASEMENT
2. --- DENOTES 10 FT. WIDE UTILITY EASEMENT
3. --- DENOTES FENCE
4. ● DENOTES SET 1/2" IRON ROD UNLESS OTHERWISE NOTED
5. ■ DENOTES CALCULATED POINT
6. ○ DENOTES FOUND 1/2" IRON ROD UNLESS OTHERWISE NOTED
7. --- DENOTES 60 FT. ROAD RIGHT-OF-WAY EASEMENT, 30 FT. BEING RESERVED OVER EACH TRACT ADJACENT TO THE CENTERLINE OF SAID ROAD