

91 LOTS	255.761 ACRES
(2) COMMON'S AREA'S	2.418 ACRES
60' Private Road's	16.503 ACRES
Aqua Water Well Site	0.230 ACRE
<b>TOTAL</b>	<b>274.912 ACRES</b>

Inst. # 2021-00007881  
 Call G Slide 317

**Lake Palestine**  
 (Normal Pool 345')

Extents of Zone "A"  
 Per FIRM Map Referenced

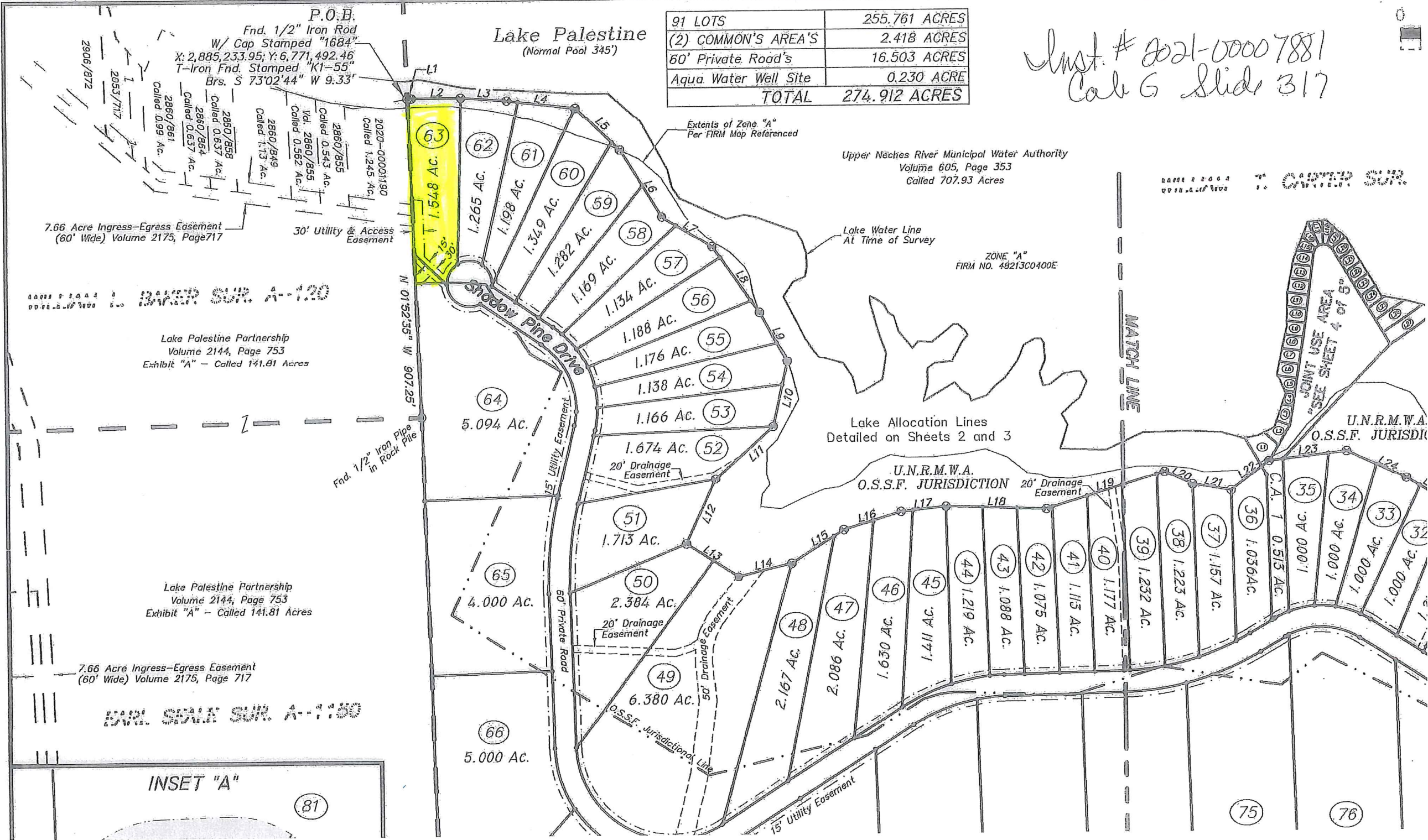
Upper Neches River Municipal Water Authority  
 Volume 605, Page 353  
 Called 707.93 Acres

ZONE "A"  
 FIRM NO. 49213C0400E

Lake Allocation Lines  
 Detailed on Sheets 2 and 3

U.N.R.M.W.A.  
 O.S.S.F. JURISDICTION

U.N.R.M.W.A.  
 O.S.S.F. JURISDICTION



Lake Palestine Partnership  
 Volume 2144, Page 753  
 Exhibit "A" - Called 141.81 Acres

Lake Palestine Partnership  
 Volume 2144, Page 753  
 Exhibit "A" - Called 141.81 Acres

7.66 Acre Ingress-Egress Easement  
 (60' Wide) Volume 2175, Page 717

INSET "A"

81

75

76