

546 FM 1488
Conroe TX
18.229 acres +/-

Presented by Tamarah Curtis,
Broker

Creighton Realty Partners, LLC



794,055 Sqft (18.229 acres)

\$5,950,000 Asking Price (\$7.49/sqft)

Front – 656 ft Back – 655 ft

Left – 1,235 ft Right – 1,197 ft

*approx.

- This 18-acre property on FM 1488 is located less than a minute from the junction of I-45 and 1488, making it highly accessible. Its vicinity is composed of both residential and commercial sites, making it ideal for growth opportunities.

PROPERTY FACTS

Sale Type - Investment or Owner User

Proposed Use - Commercial

No. Lots 1

Total Lot Size 18.22 AC / Price Per AC \$326,564

Property Type Land (Home and Shop on property
(House flooded twice and the Shop has never flooded))

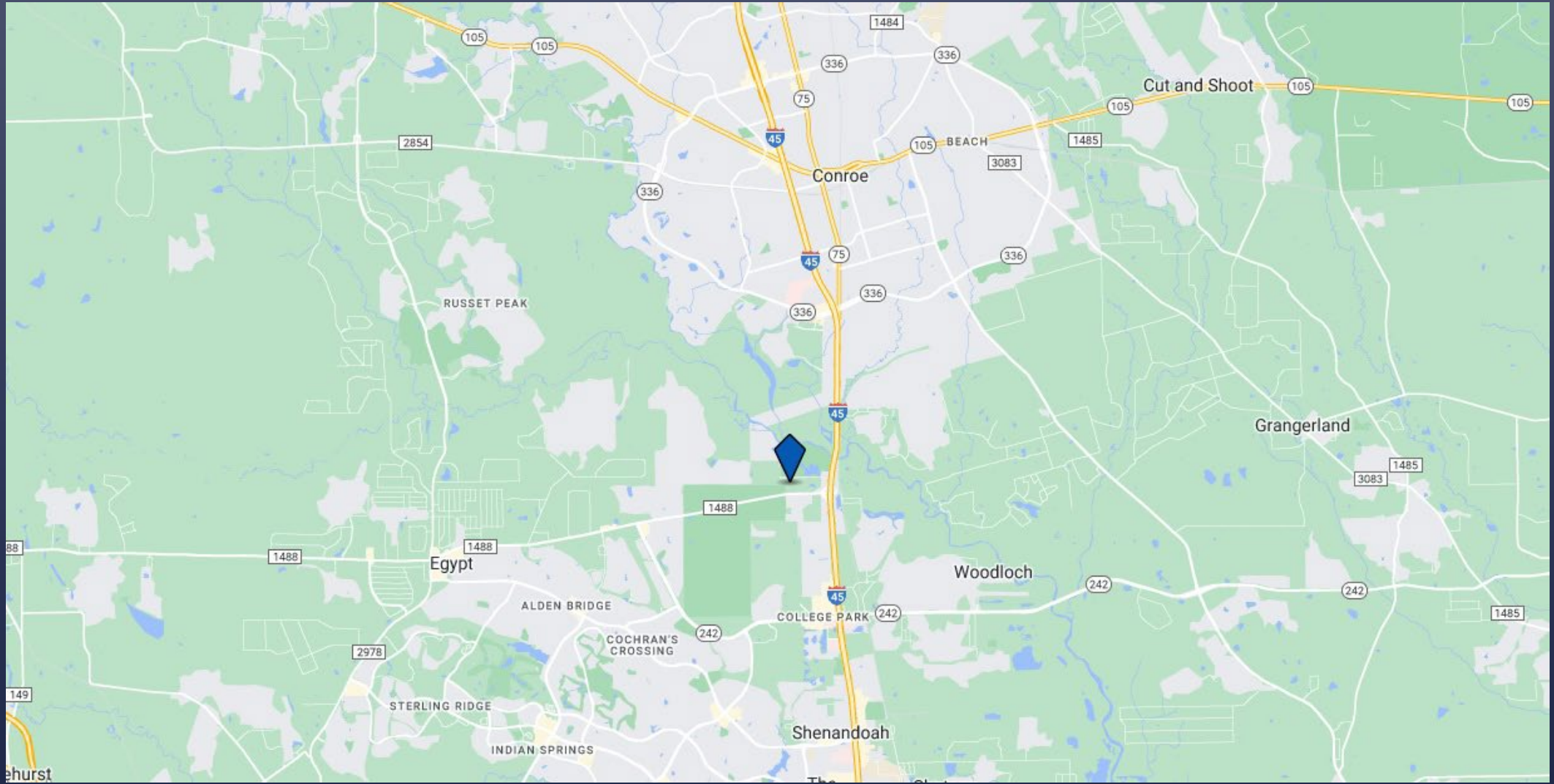
AIRPORT

Houston George Bush Intercontinental Airport

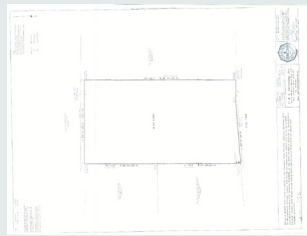
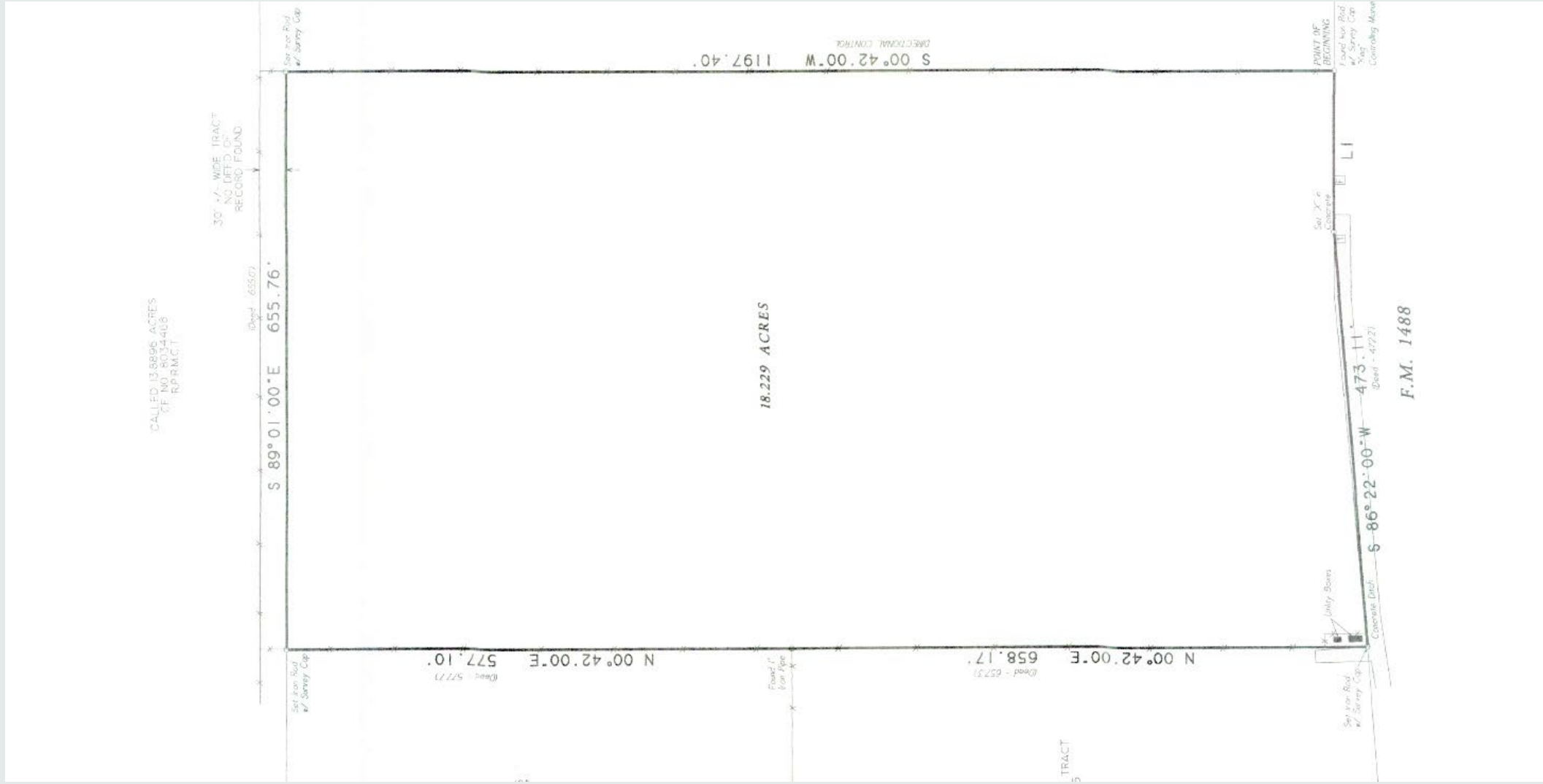
33 min drive 26.5 mi

PROPERTY TAXES

Parcel Number 0577-00-00110



Survey. Click the smaller icon below survey picture for a pdf version.





Click picture below for a pdf of a quick engineering evaluation





I-45 & FM 1488



The Towers Woodlands

Exact

Mansions in the Forest



