

**unless noted otherwise**

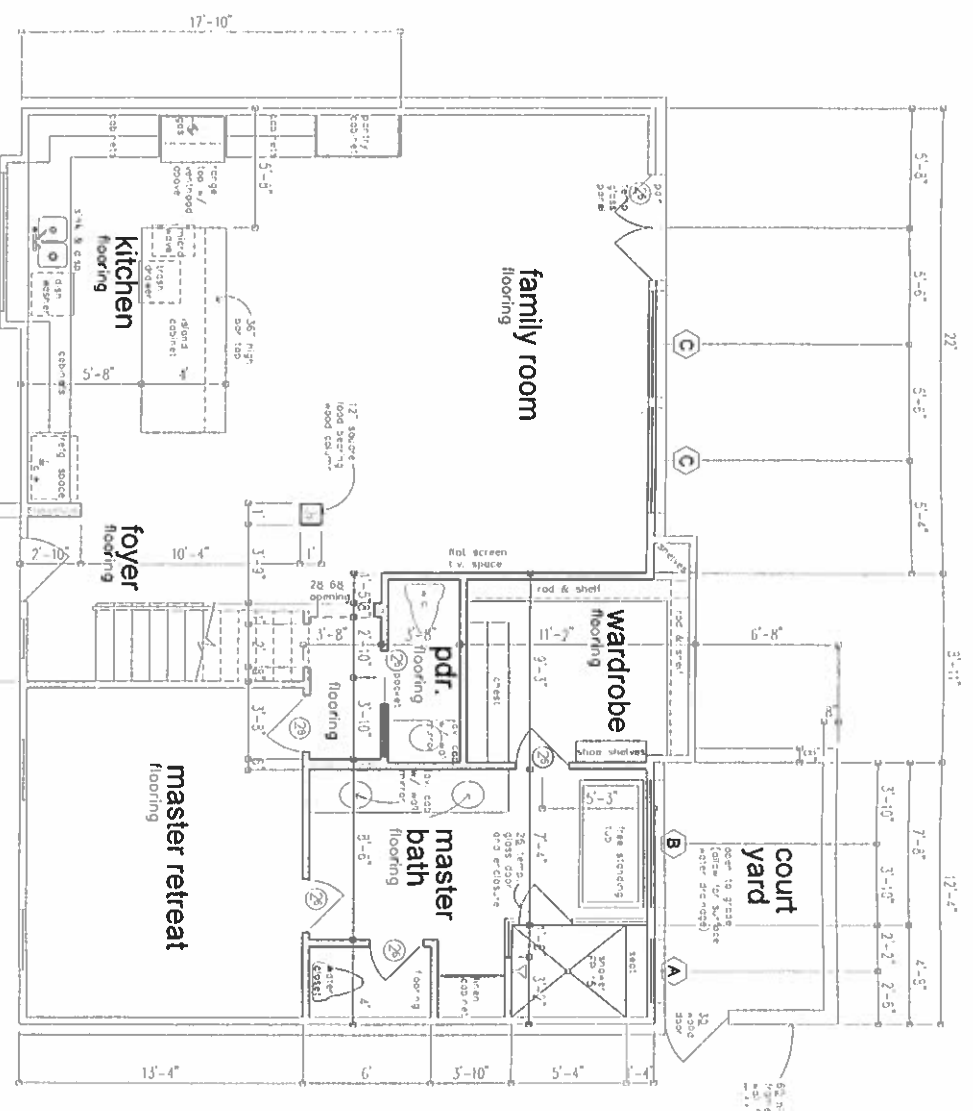
1. Demolition includes the removal of existing equipment, fixtures, or the contents, and the disposal of demolition materials in accordance with applicable codes, regulations, ordinances and authorities having jurisdiction.
2. All work performed shall be in accordance with applicable local codes, regulations, ordinances and authorities having jurisdiction.
3. Provide proper fall protection to prevent collapse of construction to be demolished and adjacent facilities to remain.
4. Remove all existing floor covering, carpet, paint, tile, grout, etc., in areas where new finish is scheduled. Floor slab shall be scraped and swept.
5. Remove from site debris, rubbish, and other materials resulting from demolition operations and apply transport and disposal all materials removed from demolition site.

**window schedule**

- A 30.20 tempered fixed 3.0x5
- B 50.43 tempered fixed 3.0x5
- C 50.50 tempered fixed 3.0x5

**unless noted otherwise**

- FP 1. First floor (finished height) 8'-0" ceiling height, 8'-0" finish height, 8'-0" floor height, 8'-0" ceiling height, 8'-0" finish height, 8'-0" floor height.
- FP 2. Second floor (finished height) 8'-0" ceiling height, 8'-0" finish height, 8'-0" floor height, 8'-0" ceiling height, 8'-0" finish height, 8'-0" floor height.
- FP 3. Third floor (finished height) 8'-0" ceiling height, 8'-0" finish height, 8'-0" floor height, 8'-0" ceiling height, 8'-0" finish height, 8'-0" floor height.
- FP 4. Fourth floor (finished height) 8'-0" ceiling height, 8'-0" finish height, 8'-0" floor height, 8'-0" ceiling height, 8'-0" finish height, 8'-0" floor height.
- FP 5. Fifth floor (finished height) 8'-0" ceiling height, 8'-0" finish height, 8'-0" floor height, 8'-0" ceiling height, 8'-0" finish height, 8'-0" floor height.
- FP 6. Sixth floor (finished height) 8'-0" ceiling height, 8'-0" finish height, 8'-0" floor height, 8'-0" ceiling height, 8'-0" finish height, 8'-0" floor height.
- FP 7. Seventh floor (finished height) 8'-0" ceiling height, 8'-0" finish height, 8'-0" floor height, 8'-0" ceiling height, 8'-0" finish height, 8'-0" floor height.
- FP 8. Eighth floor (finished height) 8'-0" ceiling height, 8'-0" finish height, 8'-0" floor height, 8'-0" ceiling height, 8'-0" finish height, 8'-0" floor height.
- FP 9. Ninth floor (finished height) 8'-0" ceiling height, 8'-0" finish height, 8'-0" floor height, 8'-0" ceiling height, 8'-0" finish height, 8'-0" floor height.
- FP 10. Tenth floor (finished height) 8'-0" ceiling height, 8'-0" finish height, 8'-0" floor height, 8'-0" ceiling height, 8'-0" finish height, 8'-0" floor height.



indicates new frame walls  
indicates walls to be removed

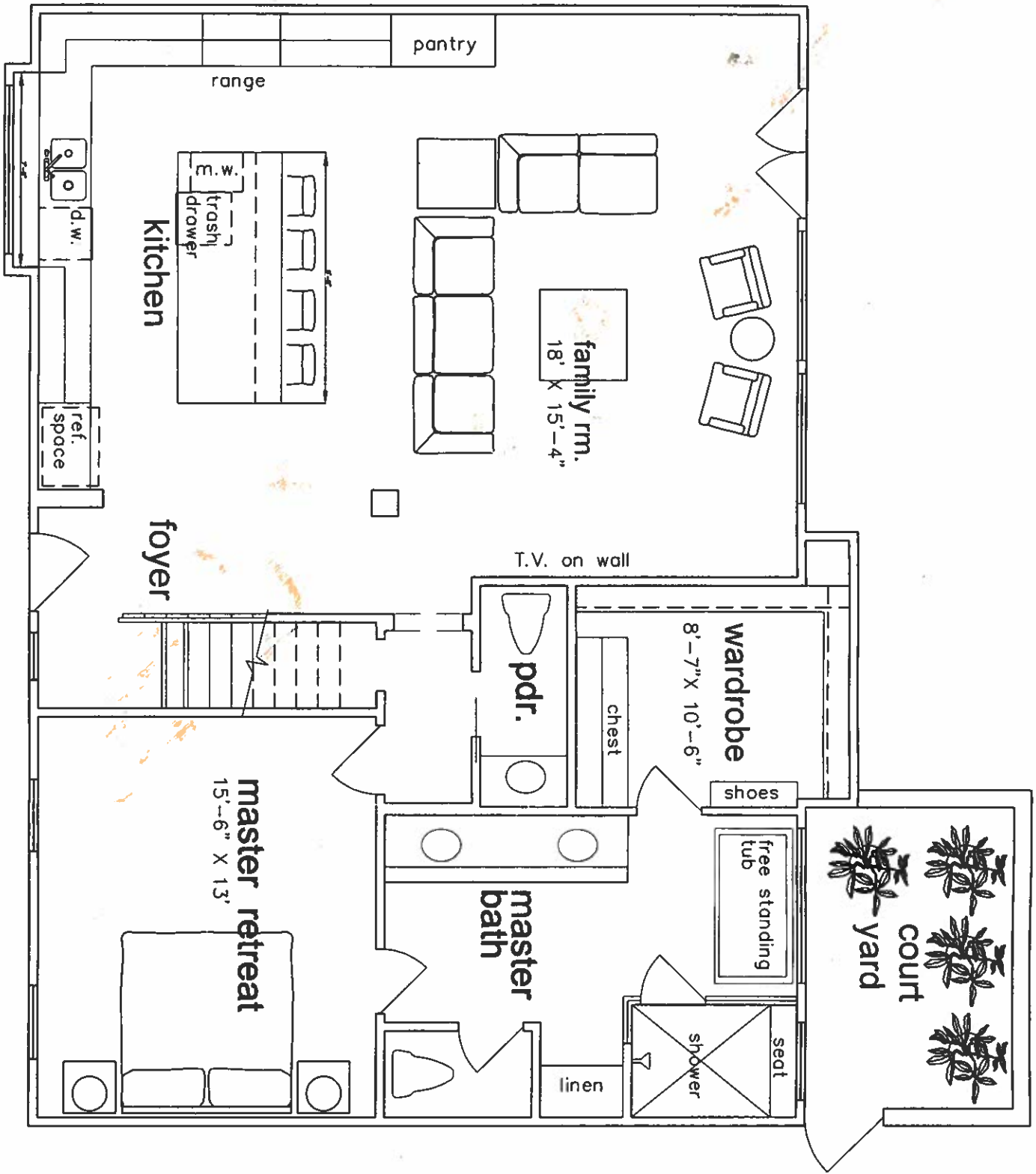
- FP 11. All openings of masonry, concrete, or other material shall be closed with the same or better material as the original material.
- FP 12. All openings of masonry, concrete, or other material shall be closed with the same or better material as the original material.
- FP 13. All openings of masonry, concrete, or other material shall be closed with the same or better material as the original material.
- FP 14. All openings of masonry, concrete, or other material shall be closed with the same or better material as the original material.
- FP 15. All openings of masonry, concrete, or other material shall be closed with the same or better material as the original material.
- FP 16. All openings of masonry, concrete, or other material shall be closed with the same or better material as the original material.
- FP 17. All openings of masonry, concrete, or other material shall be closed with the same or better material as the original material.
- FP 18. All openings of masonry, concrete, or other material shall be closed with the same or better material as the original material.
- FP 19. All openings of masonry, concrete, or other material shall be closed with the same or better material as the original material.
- FP 20. All openings of masonry, concrete, or other material shall be closed with the same or better material as the original material.

**PROPOSED FIRST FLOOR PLAN**

scale: 1/4" = 1'-0"

REPRODUCTION RESTRICTIONS: This set of drawings is the copyright property of KENW Young Designers, Inc. This set of drawings shall not be reproduced, stored in a retrieval system, or transmitted in any form or by any means, electronic, mechanical, photocopying, recording, or by any information storage and retrieval system, without the prior written permission of KENW Young Designers, Inc.

**KENW**  
 KENW YOUNG DESIGNERS, INC.  
 1400 W. 10th Street, Suite C-108  
 Oklahoma, OK 73102  
 Phone: 713-660-1136  
 Fax: 713-660-1136  
 Email: kyoud@kyd.com  
 Website: www.kyd.com



**proposed**

REFERENCES	
NO.	DESCRIPTION
-	-
-	-

NOTES

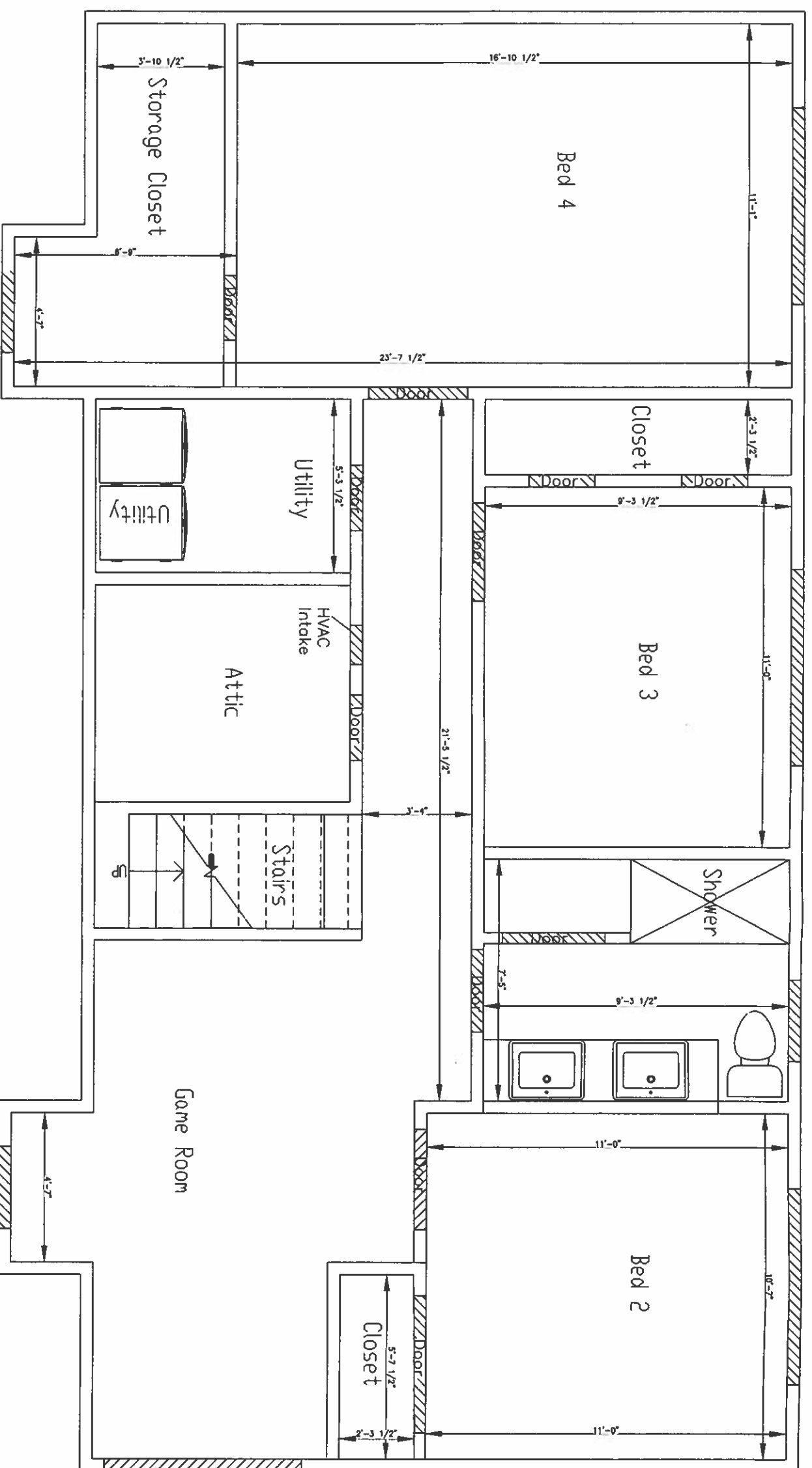
REV	DESCRIPTION	BY	DATE	ENG
-	-	-	-	-

REVISION RECORD	
REVISION	DATE
-	-
-	-

2431 Blue Water Ln  
 Proposed floor plan  
 Main Floor

DWG: LL	DATE: 2/15/2018	ENGR:	DATE:
CHK: LL	DATE: 2/15/2018	APPR:	DATE:
CLASS: -	SCALE: TO SCALE	SHT: 3 of 4	REV: 1

**HOUSE PLANS**



**proposed**

REFERENCES	
NO.	DESCRIPTION
-	-

NOTES

REV	DESCRIPTION	BY	DATE	ENG
-	-	-	-	-

REVISION RECORD	
REVISION	DATE
-	-

2431 Blue Water Ln  
 Proposed floor plan  
 Second Floor

DWG: LL	DATE: 2/15/2018	ENGR:	DATE:
CHK: LL	DATE: 2/15/2018	APPR:	DATE:
CLASS: -	SCALE: TO SCALE		
DRAWING NO: HOUSE PLANS	SHT: 4 of 4	REV: 1	