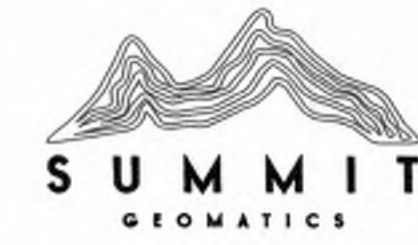
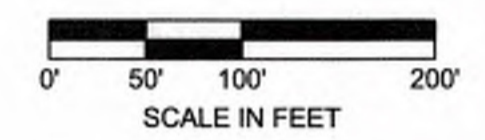


#2022 06027218

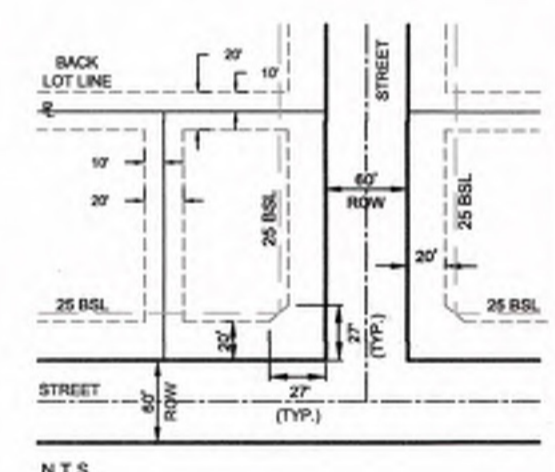


SUMMIT GEOMATICS, INC.
4603 N Stahl Park Suite 103
San Antonio, Texas 78217
Tel: 210-971-4870 • summit-geomatics.com
TBPELS Firm No. 10194657



LEGEND

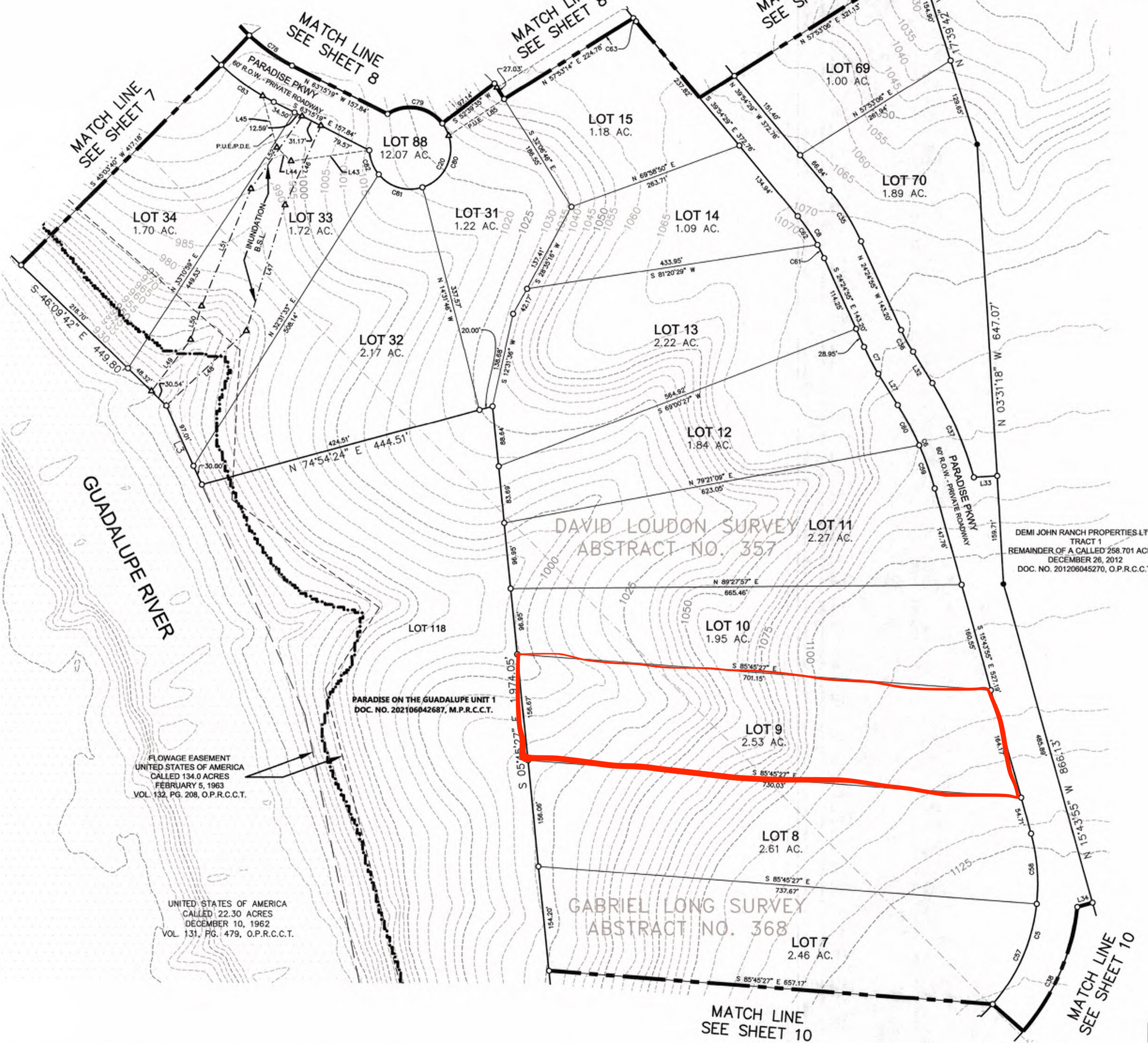
- 1/2" DIAMETER IRON PINS FOUND UNLESS OTHERWISE NOTED
- △ CALCULATED POINT
- SET 1/4" DIAMETER IRON ROD W/ CAP STAMPED "SUMMIT GEOMATICS" INC.
- ESMT EASEMENT
- BSL BUILDING SETBACK LINE
- ADJACENT PROPERTY LINES
- EXISTING CONTOURS
- MATCH LINES
- RIGHT-OF-WAY
- APPROXIMATE SURVEY LINE
- P.D.E. PUBLIC DRAINAGE EASEMENT
- P.U.E. PUBLIC UTILITY EASEMENT
- O.P.R.C.C.T. OFFICIAL PUBLIC RECORDS, COMAL COUNTY, TEXAS
- M.P.R.C.C.T. MAP & PLAT RECORDS, COMAL COUNTY, TEXAS
- SPECIAL FLOOD HAZARD AREAS (SFHAS) SUBJECT TO INUNDATION BY THE 1% ANNUAL CHANCE FLOOD



TYPICAL PUBLIC UTILITY EASEMENTS

AN EASEMENT IS GRANTED TO PUBLIC UTILITIES, BEING 20 FEET ALONG THE ROAD FRONTAGE OF EACH LOT AND TEN FEET ALONG THE SIDE AND BACK LOT LINES. SUBJECT TO SPECIFIC EASEMENTS DESIGNATED ON PLAT.

ALL PUBLIC UTILITY EASEMENTS AT ROAD INTERSECTIONS MAY BE GRANTED UP TO 27 FEET WITHIN THE 25 FOOT BUILDING SET BACK.



SEE SHEET 11 FOR LINE AND CURVE TABLES.