



Google

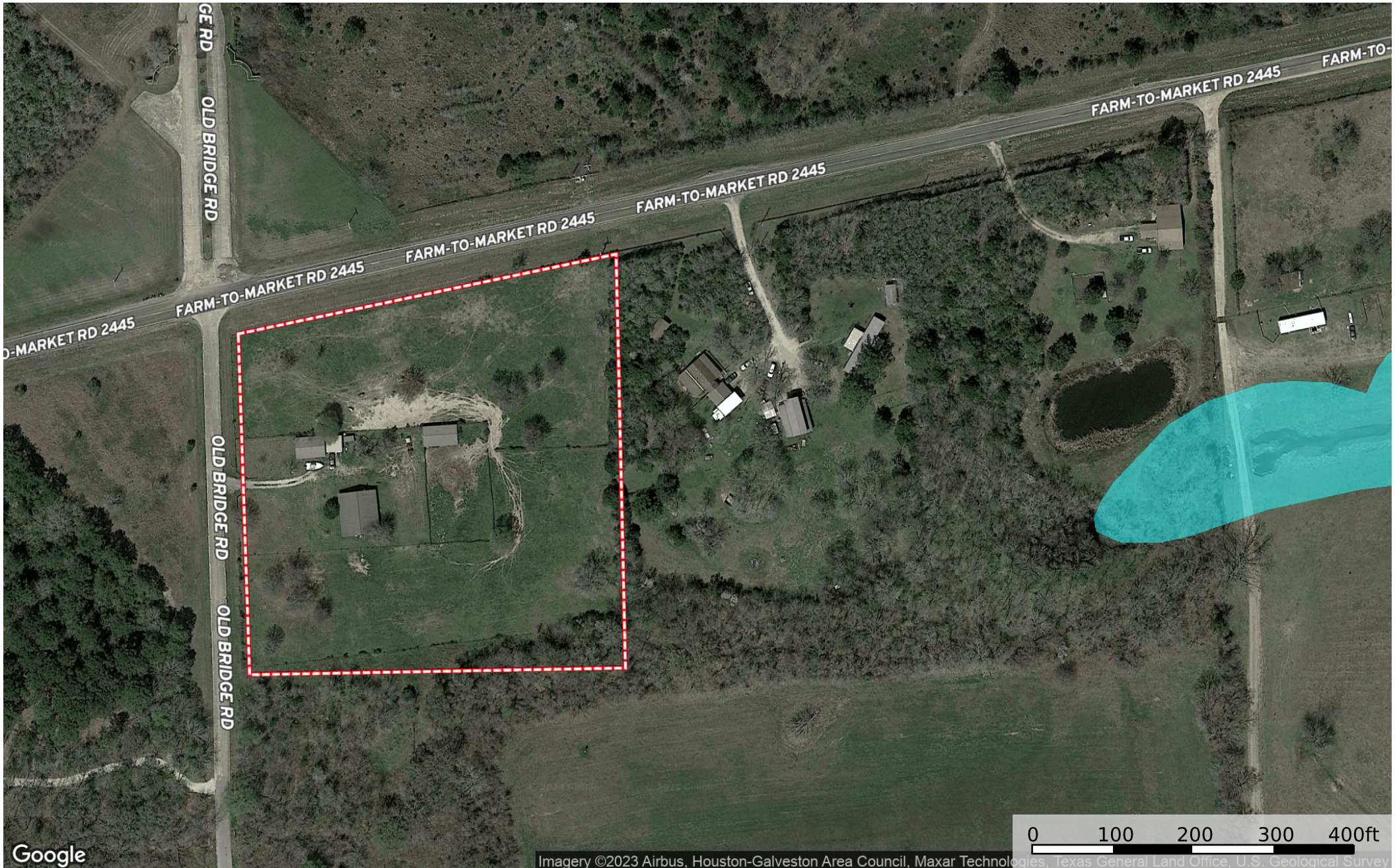
Imagery ©2023 Airbus, Houston-Galveston Area Council, Maxar Technologies, Texas General Land Office, U.S. Geological Survey

Boundary



Imagery ©2023 Airbus, Houston-Galveston Area Council, Maxar Technologies, Texas General Land Office, U.S. Geological Survey

Boundary



Google

Imagery ©2023 Airbus, Houston-Galveston Area Council, Maxar Technologies, Texas General Land Office, U.S. Geological Survey

- Boundary
- 100 Year Floodplain
- 500 Year Floodplain
- Floodway
- Special
- Unmapped/Not Included



Google

Imagery ©2023 Airbus, Houston-Galveston Area Council, Maxar Technologies, Texas General Land Office, U.S. Geological Survey

Boundary

|  Boundary 5.06 ac

SOIL CODE	SOIL DESCRIPTION	ACRES	%	CPI	NCCPI	CAP
HuC	Huntsburg loamy fine sand, 1 to 5 percent slopes	3.25	64.1	0	41	4e
FrC	Frelsburg clay, 1 to 5 percent slopes	0.94	18.54	0	44	3e
Na	Nahatche clay loam, frequently flooded	0.87	17.16	0	39	5w
TOTALS		5.06(*)	100%	-	41.13	3.99

(*) Total acres may differ in the second decimal compared to the sum of each acreage soil. This is due to a round error because we only show the acres of each soil with two decimal.

