

## Sherwood Glen

### Sales Contacts

ARNIE AVERITT  
p. (281) 386-3642  
aaveritt@angliahomeslp.com

### Sales Office Location

2230 Sherwood Glen Road  
Conroe, TX 77306

### Community Location

2230 Sherwood Glen Road  
Conroe, TX 77306

### Home Types

40'  
45'  
50'



### Community Information

Located 40 miles north of Houston, near [Conroe](#) lies the new home community of Sherwood Glen. The community can be found nestled along TX-105 East amongst open and rustic views, of small-town charm. Sherwood Glen provides an ideal location for those families who desire functional new home plans, great value and competitive standard features all with affordability in mind, along with more seclusion from the bustling of the city.

School-aged children who reside in Sherwood Glen will zone to the acclaimed Conroe ISD. Quick commutes to Conroe, Spring, Kingwood and other nearby cities are made convenient by close major thoroughways such as US-59 and I-45.

### Driving Directions

From Conroe: Head on I-45 to Exit 84B for S Loop 336 E. Follow S Loop 336 E for 6 miles to TX-105 E/Hwy 105 E. Turn right onto TX-105 E/Hwy 105 E and continue for 6 miles. Turn right onto Sherwood Glen Road, the model will be to your right.

From Cleveland (US-59): Head west toward US-59 N Bypass. Turn right onto US-59 N Bypass. Turn left onto W. Southline Street for 3.5 miles. Southline Street turns into TX-105 E. Continue along TX-105 E for 9 miles. Turn left onto Sherwood Glen Road, the model will be to your right.

From Houston (US-59): Follow I-69 to US-59 N towards Splendora. Take Exit 167 toward Fostoria Road. Turn left onto Fostoria Road, and a left onto TX-105 W. Continue along TX-105 W for 8.3 miles. Turn left onto Sherwood Glen Road, the model will be to your right.

From Houston (I-45): Head north on I-45 N to TX-105 E/ Hwy 105 E exit in Conroe. Make a right onto TX-105 E. Continue along TX-105 E for 10.5 miles. Make a right onto Sherwood Glen Road, the model will be to your right.

### Standard Features

## The Elgin



4 Bedrooms  
2 Bathrooms  
1 Half Bathrooms  
No No  
2 Garage  
1,892 Starting Square Feet  
Starting at \$ 249,990

### About this model

This two-story new home design offers a spacious family room with an optional fireplace, an open kitchen and intimate dining room, a large upstairs master bedroom, and an upstairs loft or 5th bedroom.



Elevation A

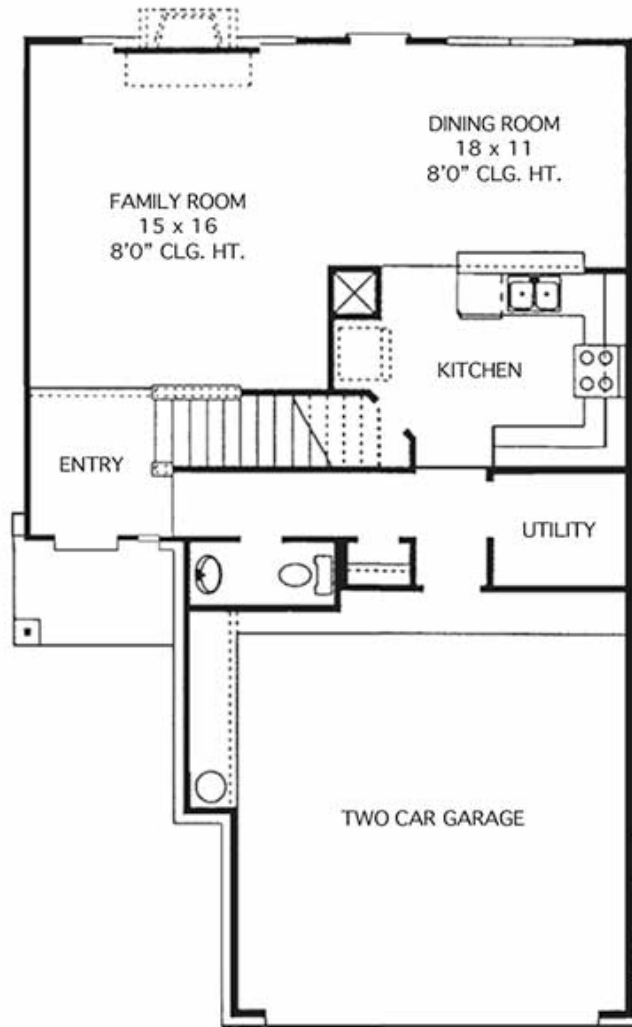


Elevation B

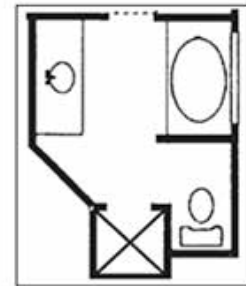
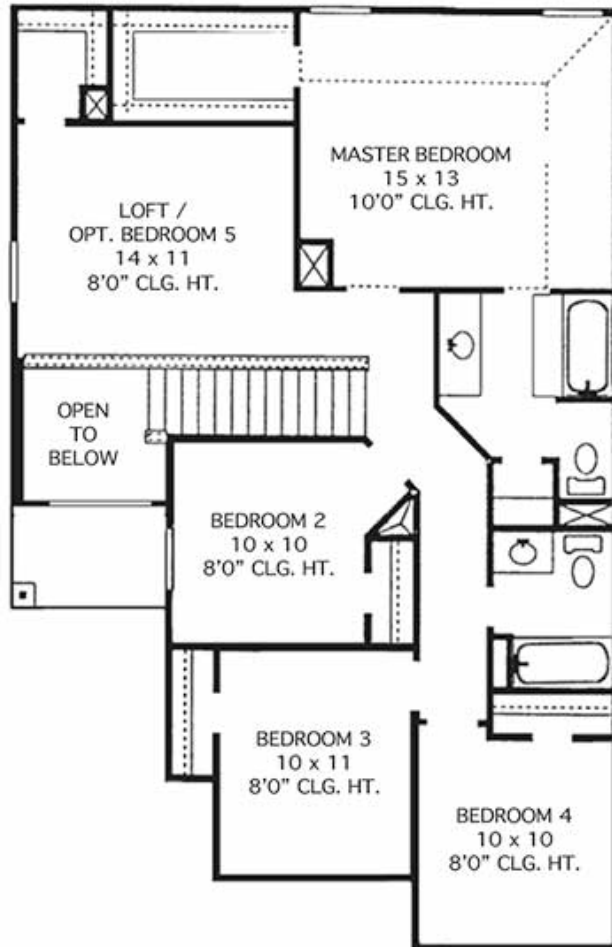


Elevation C

## The Elgin - First Floor



## The Elgin - Second Floor



OPT. MASTER BATH



Sherwood Glen  
2230 Sherwood Glen Road  
Conroe, TX 77306  
p.  
f.

---