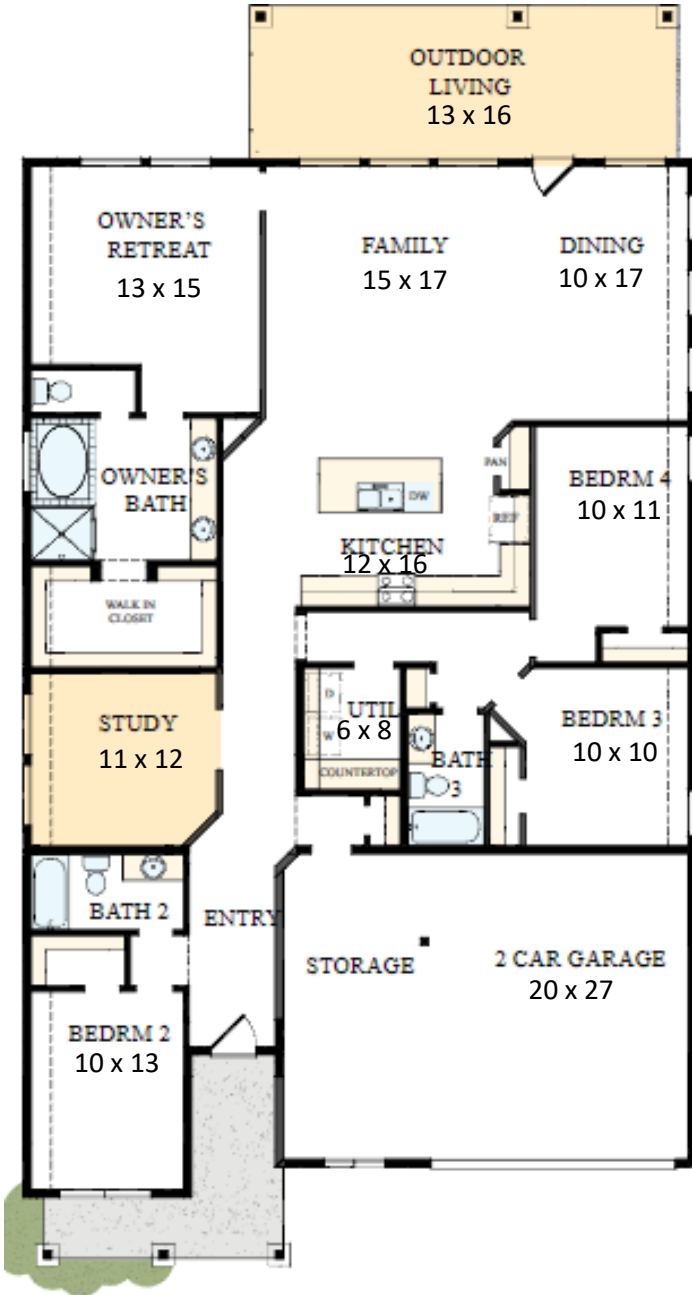


HOME SWEET *Quick Move-in* HOME

EXPLORE OUR QUICK MOVE-IN HOME OF THE MONTH!



THE PRESSLER

29623 CEDAR ELM WAY., TOMBALL, TX 77375

2394 SQ FT. / 1 STORY

4-Bedroom, 3 Bath, Study, Separate Tub/Shower @
Master Bath, Outdoor Living, 2-Car Oversized Garage.

October Completion

FOR MORE INFORMATION, CONTACT:

Beverly Bradley

832-687-0172

bbradley@dwhomes.com



See a David Weekley Homes Sales Consultant for details. Prices, plans, dimensions, features, specifications, materials, and availability of homes or communities are subject to change without notice or obligation. Illustrations are artist's depictions only and may differ from completed improvements. Copyright ©2018 David Weekley Homes - All Rights Reserved. 290837 Phoenix, AZ (PHXW102034)



Design Selections

B7.6

KITCHEN



CABINETS
 TIMBERLAKE TAHOE
 MAIN - PAINTED LINEN
 ISLAND - PAINTED SAGE

BACKSPASH
 EV CONCEPT
 CHEVRON WHITE
 UNSANDED FROST
 GROUT

COUNTERTOP
 QUARTZ LUSO
 STRAIGHT EDGE

FLOORING
 LAKEFRONT
 AUSTIN SPC

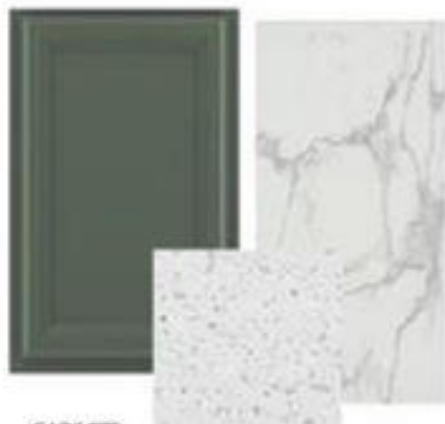


ISLAND PENDANTS
 KICHER MACLAIN
 NATURAL BRASS
 43743NBR



FAUCET
 MOEN ALIGH
 BRUSHED GOLD

OWNER'S BATH



CABINETS
 TIMBERLAKE
 TAHOE SAGE

COUNTERTOP
 QUARTZ
 BLANCO MARLE
 STRAIGHT EDGE

FLOOR AND SHOWER
 M2 COLLING
 CALACATTA 12X24
 OFFSET FROST
 GROUT



PLUMBING
 MOEN GIBSON
 MATTE BLACK

SECONDARY BATHS



CABINETS
 TIMBERLAKE
 TAHOE SAGE

COUNTERTOP
 QUARTZ
 BLANCO MARLE
 STRAIGHT EDGE

FLOOR AND SHOWER
 M2 COLLING
 CALACATTA 12X24
 OFFSET FROST
 GROUT

WHOLE HOME



CARPET
 ALBERT PLACE ECRU



FLOORING
 LAKEFRONT
 AUSTIN SPC



WALL COLOR
 AGREABLE GRAY
 SW7029

TRIM COLOR
 SNOWBOUND
 SW7004



LIGHTING
 KICHER WISLOW
 BLACK



HARDWARE
 KWIKSET P5MD IRON BLACK